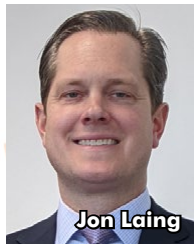


# COUNTRY AIRCHECK 2021

January 4, 2021 • Issue 737 weekly

## Cincy Changes

**Cumulus/Cincinnati** VP/Sales **Jon Laing** has been elevated to VP/MM for the cluster that includes Country **WNNF**. He succeeds **Dave Crowl**, who retired last month (CAT 11/24/20). "Jon has his finger on the pulse of Cincinnati with deep experience and relationships in the market," says EVP/Operations **Dave Milner**. Laing joined in 2013 following time with Cumulus and then-Clear Channel/Lexington, then-Clear Channel/Cincinnati and then-CBS Radio/Denver. Reach him [here](#).



Jon Laing

At WNNF, morning producer/midday personality **Karen Van Zant** has been named morning host in place of Westwood One nationally syndicated *Morning Koffy*; she is on-air until noon. Promo Dir./weekend talent **Austin "Tater" Ratcliff** has picked up the 12pm-3pm shift, and PD **Chris Clare** can be heard in afternoons. WNNF dropped its Nash FM branding in favor of "94.1 Cat Country" in 2019 (CAT 10/2/19) but continues airing syndicated *Nights With Elaina* and *Later With Lia*. Stream the station [here](#).

## Murphy Succeeds WIBL's Roberts

Mid-West Family/Springfield, IL OM **Chris Murphy** is joining **Great Plains/Bloomington, IL** as OM & Country **WIBL** PD/afternoon personality. He succeeds **Andy Roberts**, who is stepping down effective Jan. 15 to spend more time with his family. Murphy has spent more than a decade with Mid-West/Springfield following stops in Minneapolis; Madison, WI; and Philadelphia. "After four tours of duty and 26 years with Mid-West Family, I've decided to take the last media job of my career," says Murphy. "Twenty-one of those 26 years have been here in Springfield, and while I will miss [the town], I will be back to doing what I love ... live music and leading the team to create winning content on-air and online." Adds Roberts, "Our fifth child will be born in February. I will look for music, imaging and digital projects after some time off." Roberts joined in Aug. 2019 after more than 20 years with Saga/Champaign, IL (CAT 8/8/19). Reach Roberts [here](#).



**Super Glue:** WFXD/Marquette, MI's Elmer Aho receives a State of Michigan Special Tribute award in recognition for "a lifetime of dedicated service (to) his community." Local coverage [here](#).

## Chart Chat

Consistent chatter about 2020's slow singles chart bears out in at least one stat, as shown below. Before staring into the rearview, however, on to 2021's first Add Day. Congrats are in order for **Dennis Reese** and the **RCA** team for landing 42 for the **Chris Young & Kane Brown** duet "Famous Friends," which tops the inaugural Add Board.



Chris Young Kane Brown

©2021 Country Aircheck™ — All rights reserved. Sign up free at [www.countryaircheck.com](http://www.countryaircheck.com). Send news to [news@countryaircheck.com](mailto:news@countryaircheck.com)

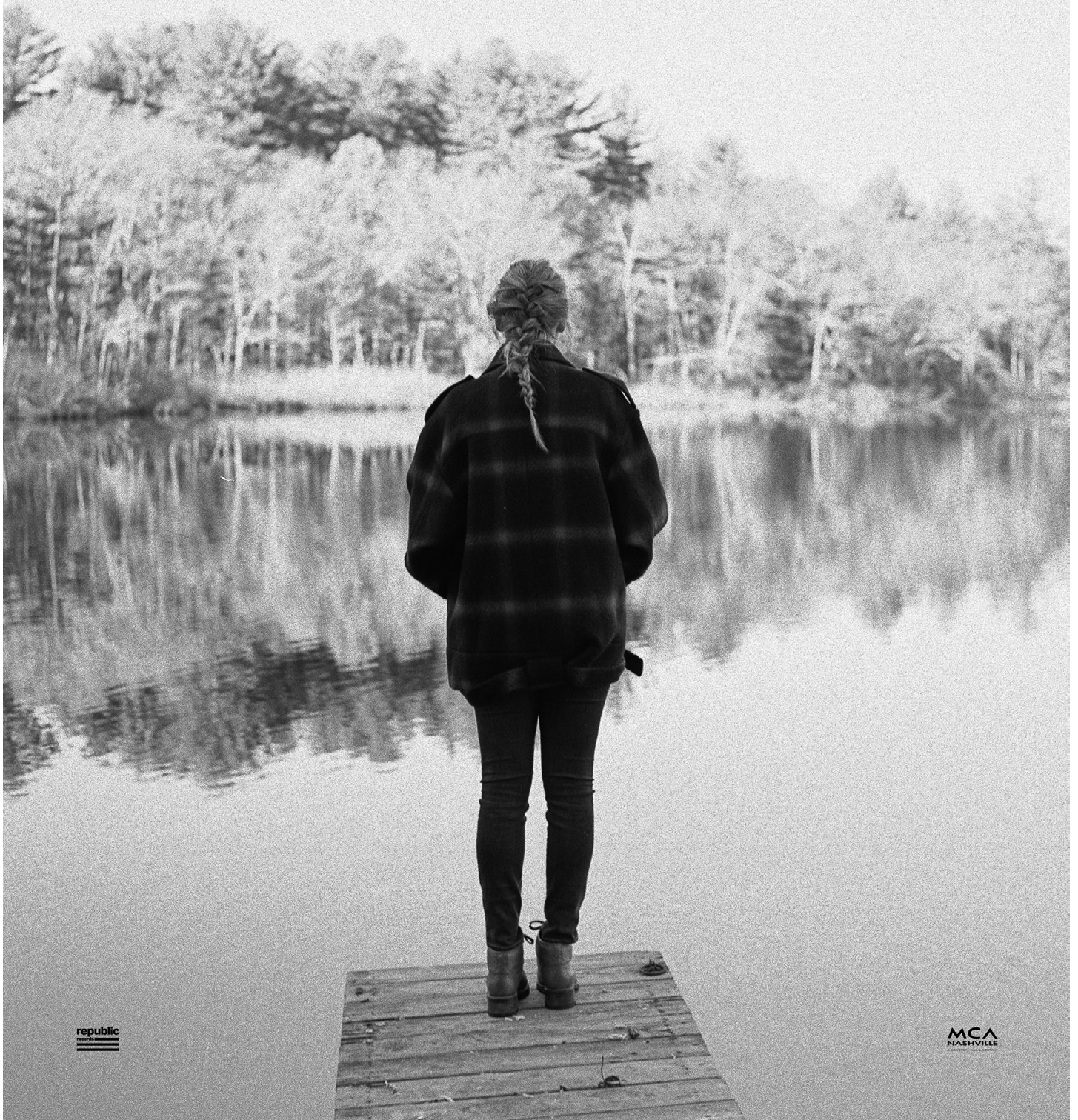
**JON PARDI**  
**TEQUILA A LITTLE TIME**  
 Another SMASH From Jon's ACM/CMA nominated Album of the Year,  
**HEARTACHE MEDICATION**  
**ON YOUR DESK NOW ▶ ADD DATE: JANUARY 19<sup>TH</sup>**

Capitol  
 A UNIVERSAL MUSIC COMPANY

*taylor swift*  
“no body, no crime (feat. HAIM)”

on your desk now  
add monday

from the multi-week #1 album, *evermore*



**Programming Note:** A reminder that tonight's chart-free **Country Aircheck Weekly** precedes the Jan. 11 return of charts, though without trending (+/- points or plays and bullets). **Country Aircheck Today** returns Tuesday, Jan. 5.

Now for the retrospective: In a year marked by blistering change, an unprecedented number of charted songs passed a weeks-on milestone. Prior to 2020, only one song had ever lasted more than a year on the **Country Aircheck/Mediabase** chart – Rodney Atkins' "Caught Up In The Country" at 55 weeks. Last year, five songs passed the 52-week barrier. In fact, the five longest charting songs in Country Aircheck history all debuted in 2019 and peaked in 2020. The full list of songs that reached 52 weeks-on or more:

- 1. TRAVIS DENNING/After A Few** (Mercury) 61 weeks  
-Debuted 4/29/19, peaked at No. 1 6/8/20.
- 2. LOCASH/One Big Country Song** (Wheelhouse) 59 weeks  
-Debuted 7/1/19, peaked at No. 1 8/3/20.
- 3. CHASE RICE/Lonely If You Are** (Broken Bow) 58 weeks  
-Debuted 9/2/19, peaked at No. 8 9/21/20.
- 4. SCOTTY MCCREERY/In Between** (Triple Tigers) 57 weeks  
-Debuted 6/10/19, peaked at No. 1 6/22/20.
- 5. JIMMIE ALLEN/Make Me Want To** (Stoney Creek) 56 weeks  
-Debuted 2/25/19, peaked at No. 1 3/2/20.
- 6. RODNEY ATKINS/Caught Up In The Country** (Curb) 55 weeks  
-Debuted 5/7/18, peaked at No. 20 3/25/19.
- 7. LEE BRICE/Love Like Crazy** (Curb) 54 weeks  
-Debuted 9/8/09, peaked at No. 3 9/6/10.
- 8t. CRAIG CAMPBELL/Outta My Head** (Bigger Picture) 52 weeks  
-Debuted 10/29/12, peaked at No. 15 9/30/13.
- 8t. EASTON CORBIN/A Girl Like You** (Mercury) 52 weeks  
-Debuted 2/27/17, peaked at No. 5 2/12/18.

**THIS WEEK'S ADDS**

Country Aircheck Add Leaders	Adds
<b>CHRIS YOUNG &amp; KANE BROWN/Famous Friends</b> (RCA)	<b>42</b>
<b>COLE SWINDELL/Single Saturday Night</b> (Warner/WMN)	<b>22</b>
<b>CHASE RICE F/FGL/Drinkin' Beer...</b> (Dack Janiels/BBR/BMLGR)	<b>19</b>
<b>ERIC CHURCH/Hell Of A View</b> (EMI Nashville)	<b>13</b>
<b>JAKE OWEN/Made For You</b> (Big Loud)	<b>12</b>
<b>JASON ALDEAN/Blame It On You</b> (Macon Music/Broken Bow)	<b>12</b>
<b>MIRANDA LAMBERT/Settling Down</b> (RCA)	<b>10</b>
<b>CARLY PEARCE/Next Girl</b> (Big Machine)	<b>9</b>
<b>JAMESON RODGERS f/L. COMBS/Cold...</b> (River House/Columbia)	<b>7</b>
<b>SCOTTY MCCREERY/You Time</b> (Triple Tigers)	<b>7</b>

- 8t. HIGH VALLEY/Make You Mine** (Atlantic/WEA) 52 weeks  
-Debuted 3/28/16, peaked at No. 16 3/6/17.
- 8t. DYLAN SCOTT/Hooked** (Curb) 52 weeks  
-Debuted 10/9/17, peaked at No. 2 9/17/18.

**WW1's Steinhauer Exits**

**Westwood One COO Charles Steinhauer** has exited after more than 11 years. He joined in 2009 after Cumulus bought Dial Global, where he had served as a member of the executive team since 1998. Steinhauer was named to his most recent post in 2013 ([CAT 6/4/13](#)). No word on plans for a successor.



**Charles Steinhauer**

©2021 Country Aircheck™ — All rights reserved. Sign up free at [www.countryaircheck.com](http://www.countryaircheck.com). Send news to [news@countryaircheck.com](mailto:news@countryaircheck.com)

**TIM DUGGER**

YOU'RE GONNA LOVE ME

**IMPACTING NOW**

**3.3M+ CAREER ON-DEMAND STREAMS**

**2.1M + PANDORA LIFETIME STREAMS**

**1M+ TOTAL YOUTUBE VIEWS**

Morgan Wallen  
**DANGEROUS**  
the double album



AVAILABLE THIS FRIDAY  
JANUARY 8



# Quaran-Time

WITH ... KELLEIGH BANNEN

An inside look at how the host of *The Kelleigh Bannen Show* and *Today's Country* on Apple Music Country is spending her Quaran-Time:

**Even as an introvert**, I miss people desperately. Bumping into my friend Natalie Stovall in my neighborhood in December made me so emotional, like I couldn't believe my eyes. It's all the small "bump intos" on Music Row or out on the road that I miss so much.

**My routine has changed a lot** — waking up at 4:30am for a 7am live radio show on Apple Music Country is a wildly different routine from a normal tour schedule or even just being home in Nashville writing. Now I'm in bed at 8:30pm.

**I've learned I really love** being on a team. In a year that felt so isolating, I've learned the producers I get to work with every day are literally why I get out of bed in the morning.

**I haven't adopted a new hobby**, but I have a new skill! I actually run my board for my live daily show. It was important to me to

physically be able to run my show.

**I'm doing much less co-writing** — Zoom writing is really hard — but I am doing a lot more solo writing. I bought a piano and spend a lot of time working out ideas by myself there.

**I'm on Twitter a lot more** than ever before ... mostly to talk about music with fans and friends, and that's been really fun. It's been good to be able to share a less polished version of ourselves. I know I relate to people that are willing to share their mess as well as their victories.

**I just binged Netflix's *Bridgerton***, and the music was as good as the show. It's these really beautiful string arrangements of recent pop hits like Billie Eilish's "Bad Guy" and Taylor Swift's "Wildest Dreams."

**My go-to quarantine snack is** chocolate covered cherries. Is wine considered a snack?



DIOR-TO-DIOR SALESWOMAN

**The silver lining has been more time** than I've ever had with my husband in our whole marriage. We walk our neighborhood most days with the dogs, and it's been one of the absolute highlights.

## KRRM/Medford, OR Flips, Adds Jason & Ashley

Grants Pass **KRRM/Medford, OR** has launched as Classic Country "94.7 KRRM Your Brand Of Country" after closing on the purchase of the silent signal from the estate of the late Shirley M. Bell last month. Grants Pass owner **Carl Wilson, GM Brian Diate** and Cluster PD **Brenda Fritsen** are overseeing the station and unveiled the on-air lineup with a video announcement [here](#).

Former crosstown Bicoastal Country KRWQ PD/morning host

**Ashley Greninger Main** and former co-host **Jason Allen** have resurfaced at KRRM for mornings after resigning their previous posts in October ([CAT 10/30/20](#)) and December ([CAT 12/18/20](#)), respectively. "This has definitely been the hardest secret to keep, as we are beyond pumped to start this new adventure," share Main and Allen via their Facebook personality page [here](#). It is a return to the cluster



©2021 Country Aircheck™ — All rights reserved. Sign up free at [www.countryaircheck.com](http://www.countryaircheck.com). Send news to [news@countryaircheck.com](mailto:news@countryaircheck.com)

# WISHING EVERYONE A Happy and Safe New Year

**BLAME IT ON YOU**

**JASON ALDEAN**

**FOLLOW-UP TO 24 #1'S!**

**#6 MOST ADDED!**

**BB: \*33 CA/MB: \*35 SALES UP 46%!**

**DUSTIN LYNCH**

**MOMMA'S HOUSE**

**CA/MB: \*15 BB: \*18 SALES UP 40%! STREAMS UP 26%!**

BBR BBR BMG

**CHASE RICE** FEATURING **FLORIDA GEORGIA LINE**

**DRINKIN' BEER. TALKIN' GOD. AMEN.**

**CHASE'S FASTEST MOVING SINGLE TO DATE!**

**CA/MB: \*41 BB: \*45 #3 MOST ADDED!**

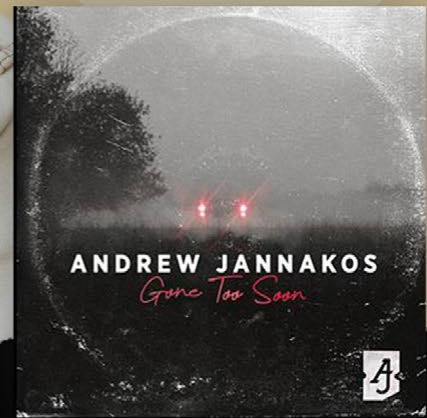
KKGO, KPLX, KSCS, KKBB, WKHX, KUBL, WWKA, WFMS, WCTK, WKDF, WGKX, KIIM, KRST, KHKI, WIVK, WCTO, WOGK, KATC, KIZN, KBUL, WIOV, KHAY

**Lainey Wilson**

**THINGS A MAN OUGHTA KNOW**

**Debuted on BB: \*57 MB: \*56 BIG ADD at KKBB! Sales AND Streams UP 24%**

WHAT SONG WILL BE CLOSING IN ON  
**30M STREAMS** BEFORE IMPACT??



**ANDREW JANNAKOS**

**“GONE TOO SOON”**

**1.25**

WATCH VIDEO HERE



for Allen, who previously spent seven years with Top 40 sister KLDL. Fritsen will handle middays, Classic Hits sister KAJO Prod. Dir./on-air talent **Tom Ray** will helm afternoons and KLDL Acct. Exec./morning host **Cassie Callas** will be heard at night. Stream the station [here](#).

**WBYT/South Bend Shuffles Lineup**

**Federated** Hot AC WAOR/South Bend, IN PD/midday host **Zach Miller** has added mornings at Country sister **WBYT** alongside former night personality **Brittney Baily**. The *B100 Morning Show With Zach & Brittney* succeeds **Deb Miles**, who segues to middays. The daypart has been voicetracked since **Brad King's** departure last year (CAT 4/7/20). PD **Jesse Garcia** continues to be heard in afternoons, and weekend **Keith "Moody"** takes over in nights. Stream the station [here](#); reach Miller [here](#).



**Michaels Joins WVVR Mornings**

Former Hoosier AC WXXC/Marion, IN Dir./Production & afternoon personality **Mandi Michaels** has joined Saga **WVVR/Clarksville, TN** for mornings alongside incumbent **Fletch**. She succeeds **Jai Kershner**, who left in November (CAT 11/12/20). Michaels' prior career stops include Country outlets KBKB/Burlington, IA; WTHI/Terre Haute, IN; and WMDH/Muncie, IN. Reach her [here](#).



**Artists Guest For KNUC Mornings**

Following last month's departure of the *Fitz in the Morning* show at Hubbard **KNUC/Seattle**, PD **Scott Mahalick** has unveiled a series of guest hosts to handle the daypart for the next two weeks. **Big & Rich** kicked things off this morning (1/4) and will be followed by **Kenny Chesney** (1/5), **Blake Shelton** (1/6), **Little Big Town** (1/7) and **Scotty McCreery** (1/8). Scheduled for next week: **Florida Georgia Line** (1/11), **Blake Shelton** and **Luke Bryan** (1/12), **Sheryl Crow** (1/13), **Darius Rucker** (1/14) and **Uncle Kracker** (1/15). Mahalick is still looking for a permanent replacement in mornings, interested parties can send their best stuff to him [here](#).

**ADD DATES**

**January 11**  
**RUSSELL DICKERSON**/Home Sweet (Triple Tigers)  
**TAYLOR SWIFT**/No Body, No Crime (Republic/MCA)

**January 19**  
**JON PARDI**/Tequila Little Time (Capitol)

**January 25**  
**HARDY**/Give Heaven Some Hell (Big Loud)  
**ANDREW JANNAKOS**/Gone Too Soon (RCA)

Send yours to [adds@countryaircheck.com](mailto:adds@countryaircheck.com)

**CHECK OUT 1/8**

**Morgan Wallen** *Dangerous: The Double Album* (Big Loud)  
 The sophomore 30-track double album is nearly three years in the making, written largely by Wallen alongside Ashley Gorley, Shane McAnally, Hillary Lindsey, Rhett Akins, Eric Church, Jason Isbell, Hardy and more. It features both of Wallen's current Country radio singles, "More Than My Hometown" and "7 Summers," as well as a cover of Isbell's "Cover Me Up," New Year's surprise release "This Bar" and the album version of the 3x platinum Diplo collaboration "Heartless."

**January 15**  
**Devin Dawson** *Pink Slip EP* (Warner/Atlantic)

**February 12**  
**Florida Georgia Line** *Life Rolls On* (BMLGR)

**Three Added To RAB Board**

Connoisseur CEO **Jeff Warshaw** and Townsquare COO/Local Media **Erik Hellum** have been elevated to Vice Chair and Finance Chair, respectively, of the **Radio Advertising Bureau (RAB)** Board of Directors following **Bill Hendrich's** retirement from Cox. Additionally, Cumulus EVP/Corporate Marketing & Westwood One Pres. **Suzanne Grimes** has been added to the RAB's Executive Committee. Neuhoff COO **Mike Hulvey** and Univision Pres./GM **Sabina Widmann** continue to serve as Chair and Secretary, respectively. Complete Board of Directors [here](#).

©2021 Country Aircheck™ — All rights reserved. Sign up free at [www.countryaircheck.com](http://www.countryaircheck.com). Send news to [news@countryaircheck.com](mailto:news@countryaircheck.com)

QUARTZ HILL RECORDS PROUDLY INTRODUCES...

**NATE BARNES**

**YOU AIN'T PRETTY**

ON YOUR DESK NOW

LISTEN HERE

QUARTZ HILL RECORDS  
 Orchard

# Lady A

MAX SPINS NOW

"CHAMPAGNE NIGHT"

*from* NBC's SONGLAND

**MAX SPINS:**

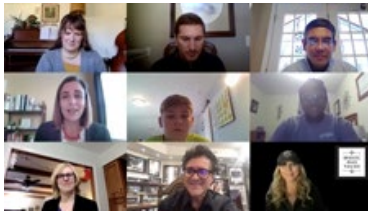
JANUARY 3<sup>RD</sup> THROUGH JANUARY 10<sup>TH</sup>





## Music Has Value Awards Grants

**Big Machine Label Group** Pres./CEO **Scott Borchetta** and SVP/Creative **Sandi Spika Borchetta** awarded the first five of 15 **Music Has Value** \$10,000 grant recipients: Tennessee's Chattanooga Boys Choir, Washington's Ted Brown Music Outreach, Arizona's United Sound, Boston's Education Through Music and Oklahoma City's El Sistema Oklahoma. The Borchettas surprised the organizations with the news on Zoom (see photo). The grant fund for 501c3 non-profit music schools and organizations was launched in September (9/1/20) in honor of BMLG's 15th anniversary.

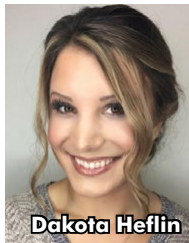


## JVC Acquires Ft. Walton Beach Cluster

**JVC Media** has purchased the four-station **Community/Ft. Walton Beach, FL** cluster, including Country **WHWY**. EVP **Shane Reeve** will oversee the integration and will be responsible for staffing and operations. "The prior ownership was committed to community service on the Emerald Coast, high quality broadcasting and creating an excellent work environment for its staff, and we will continue that work," says CEO **John Caracciolo**. No immediate staffing changes have been announced. A **Nielsen** Audio diary market, Ft. Walton Beach's most recent ratings period for Spring 2020 (3/27-6/17) saw **WHWY** post a 6.1 (2t) ahead of Cumulus **WYZB's** 2.8 (6t) (CAT 7/27/20).

## Songshine Media Shuttters

**Songshine Media** founder/publicist **Dakota Heflin** has ceased operations of the independent PR firm after four years and is seeking new opportunities. "As a young woman and music business professional who dove into operating her own business at just 23 years old, I can honestly look back on this journey and beam with pride [at] the industry relationships cultivated, friendships made, and career milestones achieved." Heflin's prior experience includes time with Crowd Surf and AristoMedia Group. Reach her at 941-993-2734 or via email [here](#).



Dakota Heflin

## Gig Alerts

ADX **WYCT/Pensacola** OM/midday personality **Kevin King** is giving up his air shift to focus full-time on programming duties for the cluster. King is seeking a successor in middays who "must live and breathe every facet of the country lifestyle, be knowledgeable in digital content creation and active on a variety of media daily." The position includes full-time on-air duties and additional responsibilities that may include promotions and on-air work for sister stations. Interested candidates should send résumés and airchecks [here](#).

Hubbard **KIKV/Alexandria, MN** PD/morning host **Kris Valentine** is searching for a morning co-host/producer who will also handle duties for Oldies sister **KULO**. See the complete job description [here](#); send résumés and airchecks to Valentine [here](#).

**Seven Mountains** Chief Programming Officer **JC Burton** is seeking an OM to join the **Susquehanna Valley** group of stations that includes Country **WCFT, WQBG** and **WRBG**. Responsibilities include daily music scheduling and an air shift. Interested candidates can send résumés, airchecks and social media examples to Burton [here](#).

## Kingsley Ranch For Sale

The Texas property that was once home to **Bob Kingsley** and the numerous singer and songwriter events he hosted during his 25 years there has been put on the market. You can see more details about the 141 acre "Bluestem Ranch" [here](#), or take a video tour [here](#).



## Flipping In: WOGT, WXLO, More

After nearly two months as "Christmas 107.9" (CAT 11/05/20), Cumulus **WOGT/Chattanooga** re-launched with a current-based playlist as "107.9 Country" Dec. 28, replacing the station's previous gold-leaning "Nash Icon" incarnation. Also new to the station is Cumulus' syndicated *Morning Koffy* with **Paul Koffy** and **Jasmine Sadry**. Cluster OM **Scott Chase** is handling middays, while **Dodger** remains in afternoons.

After a decade on 96.1 (6,000 watts), **Clarity WXLO/Stamping Ground-Lexington** "Hank 96.1" moved to the much stronger 105.5 signal (25,000 watts) on Christmas Day. Clarity purchased 105.5 from iHeart's Aloha Trust in March 2020, and the station had been stunting as "Christmas 105.5" since October 1.

In what may be a first, a non-commercial NPR station has flipped to Country. Nantucket Public Radio **WNCK/Nantucket, MA** was airing classical music along with NPR programming until Dec. 28 when it flipped to "89.5 Quahog Country" (to the uninitiated, a "co-hog" is a type of clam). **OM Chris Reiser** tells **Country Aircheck** their research pointed to a demand for the format on the island. On-air duties are currently handled by **Elizabeth Bond** (6am-Noon) and **Matt Ryan** (Noon-6pm), though there may be future additions to the staff. Reach Reiser [here](#). Listen [here](#).



Eagle Communications **KNPQ/Hershey-North Platte, NE** ended its Christmas music stunting on Dec. 28 to debut as Classic Country "Q Country Legends 107.3." The station had been airing Christmas music since October (CAT 10/23/20) when Eagle purchased Classic Country **KZTL/Paxton-North Platte, NE** and moved the current-based Country format then on **KNPQ** to the stronger **KZTL** signal.

Frontier Media **KTFB HD3-K254AS/Texarkana, TX**, which had been Hot AC until going all-Christmas music in November, flipped to Classic Country Dec. 31 as "Real Country 98.7." The station is currently running jockless, but the on-air lineup taking effect next week will consist of **Dawn Parker** in mornings and **Michael B.** in afternoons (from clustermates Country **KBYB** and News-Talk **KTFB** respectively) and **Fabienne "Fabe" Thrash** in middays (previously with crosstown **KPGG**).

Forever **WXYC/Wilmington, DE** is now simulcasting on **WXYC-AM & W245CJ**, which had previously been running an Urban format as "Jammin' 96.9." **WXYC** is licensed to Havre De Grace, MD, and its signal targets Wilmington from the southeast. The new simulcast strengthens its coverage in the city. In the most recent Nielsen Audio ratings for Wilmington, **WXYC** was second among subscribing stations with a 5.1 share.

iHeartMedia flipped Hot AC **WKSI-HD2-W239BV/Winchester, VA** to "Classic Country 95.7" on Dec. 26. The station fills the format void left with **WXBN's** flip from Classic Country to Hot AC in October.



RUSSELL DICKERSON

howling  
sweet

THE FOLLOW UP TO 4  
CONSECUTIVE #1 SINGLES

IMPACTING  
JANUARY 11

## Flipping Out: WTNQ, KHLR, WLLI

Loud Media Classic Country **WTNQ/La Follette, TN** has flipped to Classic Hits as "104.9 Lake FM" following an all-Christmas tease (CAT 11/23/20). The station's time in the Knoxville-market's Country battle was short-lived, having flipped from Oldies to Classic Country last June (CAT 6/29/20).

Signal **KHLR/Little Rock, AR** has flipped to Sports as "106.7 The Buz2," with call letters changing to KBZU, becoming the second Sports station in the cluster. It flipped from AC to Country as "106.7 The Ride" in 2015 (CAT 8/13/15). The station released all on-air staff – **Doug Kramer, AJ Parker** and **Ashley King** – in November in favor of a music-only approach (CAT 11/16/20). In the most recent **Nielsen Audio** CDM Nov. 2020 ratings, KHLR ranked third among the market's three Country outlets and No. 11 overall with a 2.1 share Persons 12+ (CAT 12/11/20).

Forever South Classic Country **WLLI-AM/Jackson, TN** and its FM translator at **W231BU** have flipped to News-Talk as "Tennessee Patriot Network" and has changed its call letters to WTJF-AM. Additionally, Country **WZGY/Dyer, TN** is now simulcasting the News-Talk format as WTJF-FM. It's a return to the format for WLLI, which flipped to Classic Country in 2017 as WTJS-AM (CAT 1/18/17).

## MLC Begins Full Operations

The **Mechanical Licensing Collective** began full operations Jan. 1, the License Availability Date set by Music Modernization Act of 2018 (CAT 9/26/18). The new blanket license established by the MMA requires services to send monthly usage reports and mechanical royalty payments to The MLC, who will then match the usage activity to the respective rights owners and distribute the royalties. The MLC anticipates sending out its first royalty payments and statements in April. "The MLC has spent more than a year preparing for the License Availability Date, developing numerous resources for creators and music publishers to help them navigate the changes to mechanical licensing, conducting crucial outreach with well over 50 digital service providers (DSPs) and undertaking a widespread outreach campaign to educate music publishers, administrators, self-administrated songwriters and others in the broader music industry about The MLC's mission and purpose," says CEO **Kris Ahrend**. More [here](#).

## Contact Updates

**Entercom/Philadelphia** VP/Music Programming and AC WBEB PD/on-air talent **Shelly Easton** has exited after 11 years with the cluster. She previously programmed Country WXTU prior to Entercom divesting it to Beasley in 2018 (CAT 7/19/18). Easton's stops also include WCTO/Allentown, PA and WRBT/Harrisburg, PA. She can now be reached [here](#).

Former Cumulus/Appleton-Oshkosh, WI OM & Country WPKR PD **Dayton Kane** (CAT 6/16/20) will join Good Karma News-Talk WTMJ-AM/Milwaukee as morning co-host in mid-January. He can now be reached [here](#).

## Engage Meant: Wayne, White

Runaway June's **Jennifer Wayne** got engaged to boyfriend **Austin Moody** outside of Nashville's Ocean Way Studio over the holidays. The trio's Natalie Stovall was in on Moody's plan, telling Wayne to meet her at Ocean Way for a recording session. Instead, Moody was waiting. See how it went down [here](#).

Cherry Creek **KYSN/Wenatchee, WA** midday personality **Alyssa "Aly" White** accepted when boyfriend **Jayde Evans**



Alyssa "Aly" White and Jayde Evans

proposed over the Christmas holiday week. "I'm speechless, happy, sappy and so dang excited!" shares White. Send best wishes to the couple [here](#).

## Wedding Belles: Manning, Thornton, Pearce

Cumulus **WSM-FM/Nashville** midday personality **Lisa Manning** married **Jeff Jones** Jan. 1. "Married the love of my life on the first day that wasn't 2020," shares Manning. Send best wishes [here](#).



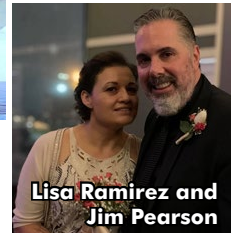
Tiffany Lynne and Bradley Thornton

iHeartMedia **WQIK/Jacksonville** night jock **Bradley Thornton** wed **Tiffany Lynne** Jan. 2 in Brook, FL. The couple had previously postponed their ceremony twice due to the pandemic. Send best wishes to the newlyweds [here](#).

Townsquare **KDBL/Yakima, WA** *The Jim Show* morning host **Jim Pearson** married **Lisa Ramirez** Dec. 31. "May we be the first to wish you a 'Happy 2021' from Mr. and Mrs. Pearson," shares the groom via [Facebook](#). Congratulate the couple [here](#).



Lisa Manning and Jeff Jones



Lisa Ramirez and Jim Pearson

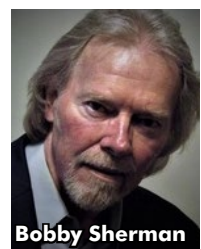
## Chronicle

Longtime air personality and programmer **Jim "Catfish" Prewitt** passed away on Dec. 9 at the age of 66. Jim's career included PD/mornings at **KOUL/Corpus Christi**, mornings at **ABC Radio Network's** Country Coast To Coast satellite format, evenings at **KFWR/Fort Worth** and time at both **KNCI** and **KNTY** in **Sacramento**. Condolences can be left [here](#).



Jim "Catfish" Prewitt

Country personality and programmer **Bobby Sherman** passed away on Christmas Day (12/25) at the age of 72. He spent more than 50 years in broadcasting, starting in high school in his native Utah. Career stops included a stint as PD/afternoon host at **KWJJ/Portland**, hosting on both the **Real Country Network** and **Jones Satellite Network's** CD Country and US Country formats and, most recently, at **KSL/Price, UT**. Services are pending. See Sherman's full obituary [here](#).



Bobby Sherman

Former Bicoastal **KRWQ/Medford, OR** MD/afternoon host **Larry Neal** passed away yesterday (1/3) following a battle with a rare form of cancer called Glioblastoma Multiforme. He was 66. Neal was with the station when it signed on in 1980 and stepped away in 2017 following his diagnosis and a prolonged hospital stay (CAT 4/6/17). A celebration of life service is being planned for later this year.



Larry Neal

Bluegrass singer and guitarist **David Anthony "Tony" Rice** passed away at his home in Reidsville, NC Christmas day at the age of 69. His death was confirmed by the International Bluegrass Music Association with no cause specified. "For those of us lucky enough to know and hear Mr. Rice, it is an impossible task to put into words his infinite



Tony Rice

2X GRAMMY® AWARD WINNERS + YOUR REIGNING CMA + ACM DUO OF THE YEAR

# DAN + SHAY



*I SHOULD PROBABLY GO TO BED*

**MAX SPINS BEGIN  
THIS SUNDAY FOR #1!**

**CURRENTLY #2 AND CLIMBING  
NAMED #1 AT BILLBOARD - TOP 10 COUNTRY  
SONGS OF 2020: STAFF PICKS**

**2020 CMT DUO VIDEO  
OF THE YEAR WINNER  
ALREADY OVER 13.6M VIEWS**



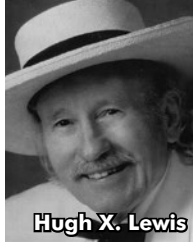
**WATCH HERE**



skill and influence," the statement reads. "As a singer, songwriter, and guitar player, there are few that will ever match his impact on bluegrass and acoustic music." He was named IBMA instrumental performer of the year six times and received a Grammy in 1983 for Best Country Instrumental Performance for "Fireball." Rice's last performance as a singer took place in 1994 following a muscle tension dysphonia diagnosis. He did not speak onstage again until his 2013 induction into the International Bluegrass Hall of Fame ([watch here](#)).



Misty Morgan



Hugh X. Lewis

Singer **Misty Morgan** passed away Jan. 1 following a battle with cancer. She was 75. Misty was married to and performed with Jack Blanchard. Together, the duo scored seven top 40 Country hits in the early '70s, including the 1970 No. 1 novelty hit "Tennessee Bird Walk." A GoFundMe page has been set up to assist with expenses [here](#).

Singer/songwriter **Hugh X. Lewis** passed away Dec. 30 at the age of 90. Lewis had five Country singles make the top 40 in the '60s. He also hosted the syndicated TV show *Hugh X. Lewis Country Club*, which aired for several seasons in the early 1970s and spurred him to open his own nightclub in downtown Nashville. Services are pending.

### Tube Check Tonight (1/4)

Ingrid Andress, *The Late Late Show with James Corden* (CBS); Maren Morris, *The Late Show With Stephen Colbert* (CBS); Sturgill Simpson, *The Tonight Show Starring Jimmy Fallon* (NBC).

### Tube Check Tomorrow (1/5)

Brett Young, Tyler Reeve, Ward Guenther and more, *Streets of Dreams: Nashville* (CNBC). Watch a clip [here](#).

### News & Notes

Triple Tigers' **Scotty McCreery** will guest host middays for Mt. Wilson **KKGO/Los Angeles** Jan. 4-29. Stream the station [here](#).

**Beasley Media Group** has kicked off its celebration of the company's



60th anniversary with a year-long event leading up to the Dec. 2 anniversary date. "We are so thrilled to be able to celebrate the incredible legacy our father, George, began back in 1961 when he built his very first AM station in Benson, NC," says CEO **Caroline Beasley**.

**Dick Broadcasting** VP/Programming **Jason Goodman** has signed a five-year contract extension. He oversees the company's 19-station group, including Country **WRNS/Greenville, NC**; **WUBB/Savannah, GA**; and Classic Country **WWHK/Myrtle Beach, SC**.

**iHeartMedia** Deputy General Counsel **Jordan Fasbender** has been elevated to EVP/General Counsel & Secretary reporting to CEO **Bob Pittman**.

**Sun & Snow Station Trust, LLC** Country **KSNR/Fisher, MN-Grand Forks, ND** is being transferred to **iHeartMedia** for no consideration.

**Extreme Media, LLC** is purchasing Country **KAUM & KVMC-AM/Colorado City, TX** from **Jimlin Broadcasting, Inc.** for \$145,230 plus \$4,470 for real estate.

**KGID, Inc.** is selling Classic Country **KGID/Giddings, TX** to **Township Media, LLC** for \$750,000.

**El Dorado Broadcasters** has launched [HDDailyNews.com](#) to distribute local news happenings to its station ownership, including Country **KATJ/Victor Valley, CA**.

The **Tennessee Radio Hall Of Fame** will mark its 10th anniversary July 31 when they honor TRHoF 2020 and 2021 inductees. The nomination window for the Class of 2021 is open through Jan. 31. More [here](#).

The **National Association of Broadcasters (NAB)** has joined the bipartisan **Covid Collaborative**, a project to address the ongoing pandemic. NAB Pres./CEO **Gordon Smith** is joining the group's National Advisory Council.

- Lon Helton**, [lon@countryaircheck.com](mailto:lon@countryaircheck.com)
- Chuck Aly**, [chuck@countryaircheck.com](mailto:chuck@countryaircheck.com)
- Caitlin DeForest**, [caitlin@countryaircheck.com](mailto:caitlin@countryaircheck.com)
- Monta Vaden**, [monta@countryaircheck.com](mailto:monta@countryaircheck.com)
- Chris Huff**, [chris@countryaircheck.com](mailto:chris@countryaircheck.com)

©2021 Country Aircheck™ — All rights reserved. Sign up free at [www.countryaircheck.com](http://www.countryaircheck.com). Send news to [news@countryaircheck.com](mailto:news@countryaircheck.com)



Give Monthly.  
Get This Shirt.

St. Jude supporter Reba McEntire



## AVAILABLE JOBS

### MIDWEST

Summit **KFDI/Wichita** OM **Justin Case** is searching for a morning co-host. See the complete posting [here](#); send résumés and airchecks to Case [here](#).

MacDonald **WKQC/Saginaw, MI** OM/PD **Jason Addams** is looking to add a full-time on-air personality for nights. Send résumés and airchecks to him [here](#).

**Midwest/Evansville, IN** OM **Aaron Santini** is seeking a Prod. Asst./on-air talent for the cluster that includes Country **WLYD**. Send cover letters, résumés and airchecks to him [here](#).

Townsquare **KOEL/Waterloo, IA** PD/morning host **Johnny Marks** is looking for a morning co-host who is "social media savvy and regularly contributes content to the station's website and social media account. See the complete job description and apply [here](#).

Saga Classic Country **WYXY/Champaign, IL** PD **Kurtis Allen** is seeking an afternoon personality. Send résumés and cover letters to him [here](#).

**Steel City/Kansas City** is searching for a Chief Engineer for the cluster that includes Country **KBEQ & KFKF**. Interested candidates can send résumés [here](#) confidentially.

### NORTHEAST

Forever **WFGI/Johnstown, PA** is seeking a full-time morning co-host. Send résumés, airchecks and salary requirements [here](#).

WVRC **WKWV/Morgantown, WV** PD **Mike Vincent** is searching for part-time on-air talent for weekend and fill-in positions. Send résumés and airchecks to him [here](#).

**Alpha/Fredericksburg, VA** is looking for a Market Mgr. for the cluster, which includes Country **WFLS**. Interested candidates can see a complete job description and apply [here](#).

### SOUTHEAST

Cumulus **WKAK/Albany, GA** PD **Bill Dollar** is looking for an afternoon personality/Production Dir. Apply [here](#).

**Saga/Gainesville-Ocala, FL** GM **Howard Tuuri** is looking for a Dir./Promotions for Country **WOGK & Classic Rock** sister **WYND**. Send résumés to him [here](#).

**ADX WYCT/Pensacola** OM **Kevin King** is seeking a full-time midday talent with additional duties that may include promotions and on-air work for sister stations within the cluster. Interested candidates can send résumés and airchecks [here](#).

### SOUTHWEST

Townsquare **KQBR/Lubbock, TX** Brand Mgr. **Lance Ballance** is seeking an APD/on-air personality to succeed **Jan Miller**. Send résumés and airchecks to him [here](#).

**Cox** Country Format Leader & Country **KKBQ/Houston** PD **Johnny Chiang** is searching for a midday personality for KKBQ to succeed **Christi Brooks**. Complete job description and application [here](#).

Cumulus **KSCS/Dallas** PD **Mike Preston** is seeking a midday personality who loves country music; knows the Texas lifestyle; executes a fun, engaging, interactive show; is a social media creator and contributor; and is willing to take on additional programming assignments as needed. Complete job description and application [here](#).

**Champlin/Oklahoma City** GM **Kevin Waltman** is looking for a Brand Mgr. for the group that includes Classic Country **KNAH**. Send résumés to him [here](#).

### WEST COAST

**Badlands/Rapid City, SD** is searching for a GM/

DOS who can build, train and motivate a team for the cluster that includes Country **KRKI**. Interested parties can send résumés and references [here](#).

**Frontier/Juneau, AK** GM **Cherie Curry** is seeking an OM/PD/on-air talent for the cluster that includes Country **KTKU**. Send résumés with references and an aircheck to Curry [here](#).

**Entercom** is now searching for a Regional Dir./Promotions for the **Mountain Region**, including **Denver, Las Vegas** and **Phoenix** markets. The position will manage all promotions and related activity for all brands in the region, including Country **KMLE/Phoenix**. See the complete job description and apply [here](#).

**Ruby Radio/Elko, NV** owner **Ken Sutherland** is seeking a "utility jock to work multiple formats," including Country **KBGZ**. Send résumés and airchecks [here](#).

### OTHER

**Cherry Creek Media** Group PD **Mark Elliott** is searching for experienced OMs and PDs for future openings. The company's Country properties include **KAAR/Butte, MT**; **KCIN & KIYK/St. George, UT**; **KMON/ Great Falls, MT**; **KGGL/Missoula, MT**; **KKXK/Montrose, MT**; **KWCD/Sierra Vista, AZ**; **KYSN/Wenatchee, WA**; **KYYZ/Williston, ND**; and **Classic Country KMON-AM/Great Falls, MT**. Candidates with a minimum of three-to-five years of experience and a background in programming multiple formats in small to medium sized markets can send résumés, airchecks and programming philosophies to Elliott [here](#).

**RWPC** Pres. **JJ Jobe** is looking for a hands-on GM for a small Southeast market. Send cover letters and résumés to him [here](#).

## SEEKING JOBS

#### •Cactus Jack

Former Entercom/Phoenix Dir./Production  
[GoGoJack@msn.com](mailto:GoGoJack@msn.com)  
602-430-5908

#### •Tony Kelly

Former WUSN/Chicago morning producer  
[KellyT\\_60468@yahoo.com](mailto:KellyT_60468@yahoo.com)  
708-642-8518

#### •Greg Cole

Former WKQC/Saginaw, MI OM/PD  
[GCole27000@gmail.com](mailto:GCole27000@gmail.com)  
916-502-4734

#### •Jonathan West

Former WKTI/Milwaukee afternoons  
[JSWest33@yahoo.com](mailto:JSWest33@yahoo.com)  
320-774-9300

#### •Doug Dodds

Former ZFKY/Grand Cayman PD/morning host  
[DougDoddsEmail@gmail.com](mailto:DougDoddsEmail@gmail.com)

#### •Marc Lavik (aka Dave Marcus)

Former on-air talent  
[ZimaGuy@gmail.com](mailto:ZimaGuy@gmail.com)  
401-467-6737

#### •Denis "Catfish" Miller

Former KSNi/Santa Maria, CA afternoon host  
[DenisMil@hotmail.com](mailto:DenisMil@hotmail.com)

#### •Cory Mikhals

Former KIZN/Boise morning co-host  
[CoryProductions@icloud.com](mailto:CoryProductions@icloud.com)

#### •"Big" John Horton

Former KFSA/Ft. Smith, AR afternoon host  
[BigJohn@TheBigJohnShow.com](mailto:BigJohn@TheBigJohnShow.com)

#### •Kris Richards

Former WKJO/Smithfield, NC afternoons  
[FireCop947@yahoo.com](mailto:FireCop947@yahoo.com)

#### •AJ McCloud

Former WWFF/Huntsville, AL APD/afternoons  
[AJ.McCloud@charter.net](mailto:AJ.McCloud@charter.net)  
256-503-2301

#### •Kristin Monica

Former WQNU/Louisville APD/mornings  
[Kristin@RadioKristin.com](mailto:Kristin@RadioKristin.com)

#### •Mac Daniels

Former KPLX & KSCS/Dallas PD  
[MacDaniels@me.com](mailto:MacDaniels@me.com)

#### •Dave Schaefer

Former iHeartMedia/Farmington, NM SVPP & Country KTRA PD  
[DRSchaefer@gobrainstorm.net](mailto:DRSchaefer@gobrainstorm.net)

#### •Brittany Tully

Former WYNK/Baton Rouge PD  
[Brilynn718@gmail.com](mailto:Brilynn718@gmail.com)

#### •Steve Knoll

Former KMAG/Ft. Smith, AR PD/on-air talent  
[SteveKnoll@cox.net](mailto:SteveKnoll@cox.net)

#### •Bill Hickok

Former KBMR/Bismark, ND morning host  
[BillHickok1950@gmail.com](mailto:BillHickok1950@gmail.com)

#### •Amy Nic

Former WAMZ/Louisville afternoon host  
[AmyNicRadioChick@gmail.com](mailto:AmyNicRadioChick@gmail.com)

#### •Ron "Keyes" Stevens

Former WQRB/Eau Claire, WI afternoon host  
[RonStvns@yahoo.com](mailto:RonStvns@yahoo.com)

#### •Scott Davidson

Former WHOF-HD2/Canton, OH PD/on-air host  
[Davidson1023@gmail.com](mailto:Davidson1023@gmail.com)

#### •Trace Hamilton

Former WEBG/Chicago night host  
[TheTraceHamilton@gmail.com](mailto:TheTraceHamilton@gmail.com)

#### •Daryl Thomas Ledyard

Former WBBS/Syracuse on-air talent  
[DarylLedyard@gmail.com](mailto:DarylLedyard@gmail.com)

#### •Ryan McCall

Former WGLR/Platteville, WI MD/afternoons  
[RyanMcCall@yahoo.com](mailto:RyanMcCall@yahoo.com)

#### •David Dean

Former KXDD/Yakima, WA afternoons  
[DaviDean5@gmail.com](mailto:DaviDean5@gmail.com)

#### •Kasper

Former WUSN/Chicago afternoons  
[KasperShow@gmail.com](mailto:KasperShow@gmail.com) and [www.KasperShow.com](http://www.KasperShow.com)

#### •Brian "Wookie" Kostek

Former WDSY/Pittsburgh APD/MD/afternoons  
[BKostek24@gmail.com](mailto:BKostek24@gmail.com)

#### •Chuck Edwards

Former WYCD/Detroit mornings  
[ChuckOn995@yahoo.com](mailto:ChuckOn995@yahoo.com)

#### •Terry Phillips

Former Entercom/Detroit Dir./Creative Services  
[Terry@TerryPhillips.com](mailto:Terry@TerryPhillips.com)

#### •Bernadette Gibbons

Former Entercom/New York Coord./Promotions  
[BernGibbons23@gmail.com](mailto:BernGibbons23@gmail.com)

#### •Blair Thomas

Former WXCW/Wilmington, DE mornings  
[BThomas330@yahoo.com](mailto:BThomas330@yahoo.com)

#### •Brad King

Former WBYT/South Bend, IN APD/MD/middays  
[BradKingRadio@yahoo.com](mailto:BradKingRadio@yahoo.com) and [here](#)

#### •Dr. Don Carpenter

Former WYCD/Detroit mornings  
[Dr.DonCarpenter@gmail.com](mailto:Dr.DonCarpenter@gmail.com)

#### •Jake Byron

Former KUPL/Portland mornings  
[JakeByronMedia@gmail.com](mailto:JakeByronMedia@gmail.com)

#### •Adam Rondeau

Former WCWL/Charlottesville, VA mornings  
[BrondeauShow@gmail.com](mailto:BrondeauShow@gmail.com)

#### •Corey Dillon

Former KNUC/Seattle afternoons/Social Media Mgr.  
[CoreyDillonRadio@gmail.com](mailto:CoreyDillonRadio@gmail.com)

**SEEKING JOBS** (continued)

**•Guy David**  
Former KYGO/Denver mornings  
[GuyDavid02@gmail.com](mailto:GuyDavid02@gmail.com)  
Agent: David Brody, 877-888-1267

**•Jeff Hunt**  
Former WXCW/Wilmington, DE  
MD/evenings  
[JeffreyJHunt@gmail.com](mailto:JeffreyJHunt@gmail.com)  
570-309-4698

**•Brent Jones**  
Former Capitol Dir./Midwest Promotion  
[DBJones615@gmail.com](mailto:DBJones615@gmail.com)  
615-482-5653

**•Kim Brixton**  
Former WNWN/Battle Creek, MI  
mornings/middays  
[KimBrixton@gmail.com](mailto:KimBrixton@gmail.com)

**•Mark McKay**  
Former Riser House  
Dir./Southeast Promotion  
[MMcKay973@gmail.com](mailto:MMcKay973@gmail.com)

**•Fletcher Keyes**  
Former WWQM/Madison, WI PD  
[KeyesCreative@gmail.com](mailto:KeyesCreative@gmail.com)  
[www.FletcherKeyes.com](http://www.FletcherKeyes.com)

**•Steve Richards**  
Former Townsquare/Albany, NY OM  
[SVal622@sbcglobal.net](mailto:SVal622@sbcglobal.net)  
901-481-2669

**•Jody Wheatley**  
Former WQMX/Akron  
MD/Promotions Dir.  
[JodyWheatley13@gmail.com](mailto:JodyWheatley13@gmail.com)

**•Kelley Bradshaw-Brock**  
Former WKDF/Nashville afternoons  
[KelleyBra13@gmail.com](mailto:KelleyBra13@gmail.com)  
423-802-4987

**•Tim Taylor**  
Former KWJ/Portland afternoons  
[Tim.Taylor1@comcast.net](mailto:Tim.Taylor1@comcast.net)

**•Ginny Harman**  
Former KFRG/Riverside mornings  
[GinnyHarmanVO@gmail.com](mailto:GinnyHarmanVO@gmail.com)

**•Nina D.**  
Former KMLE/Phoenix afternoons  
[MissNinaD@gmail.com](mailto:MissNinaD@gmail.com)

**•Erin Austin**  
Former KILT/Houston Asst. MD/  
middays  
[ErinAustinOnline@gmail.com](mailto:ErinAustinOnline@gmail.com)

**•Amber Rainey**  
Former KSON/San Diego middays  
[AmberRaineyOnAir@gmail.com](mailto:AmberRaineyOnAir@gmail.com)

**•Jared "Marshall" Goldberg**  
Former KMLE/Phoenix APD/middays &  
Cluster Dir./Digital Programming  
[ImJaredGoldberg@gmail.com](mailto:ImJaredGoldberg@gmail.com)

**•Tami Rumpfelt**  
Former WPAW/Greensboro afternoons  
[TamiRumpfelt@gmail.com](mailto:TamiRumpfelt@gmail.com)

**•Mike Allan**  
Former WNSH/New York nights  
[MikeAllanRadio@gmail.com](mailto:MikeAllanRadio@gmail.com)

**•Darlene Evans**  
Former WKIS/Miami middays  
[DarleneInc@yahoo.com](mailto:DarleneInc@yahoo.com)

**•Nathan Cruise**  
Former In2une Dir./Regional Promotion  
[NCruise27@gmail.com](mailto:NCruise27@gmail.com)  
615-496-6356

**•Mark "Skid" Lavin**  
Former WOTW/Orlando Dir./  
Production & On-Air  
[MarkLavin@yahoo.com](mailto:MarkLavin@yahoo.com)  
407-619-5346

**•"Wes McShay" Gardipe**  
Former Appaloosa Dir./Western  
Region Programming  
[WesGardipe@gmail.com](mailto:WesGardipe@gmail.com)  
307-899-0007

**•JD Justice**  
Former KCTO/Duluth, MN Brand  
Mgr./mornings  
[JDJusticeVoice@yahoo.com](mailto:JDJusticeVoice@yahoo.com)

**•Nicholas Nixon**  
Former KFRG/Riverside personality  
[Kn3ick@outlook.com](mailto:Kn3ick@outlook.com)  
909-754-3031

**•Kerry Wolfe**  
Former WMIL/Milwaukee SVPP & PD  
[KerryLWolfe@hotmail.com](mailto:KerryLWolfe@hotmail.com)  
414-788-3764

**•Chase Daniels**  
Former WRWD/Poughkeepsie, NY  
PD/afternoons  
[ChaseDaniels106@gmail.com](mailto:ChaseDaniels106@gmail.com)

**•Keith Abrams**  
Former iHeartMedia/Cleveland OM  
[KeithAbrams961@gmail.com](mailto:KeithAbrams961@gmail.com)

**•Mark Lillie**  
Former iHeartMedia/Farmington, NM  
Cluster PD  
[Lillie.Mark@gmail.com](mailto:Lillie.Mark@gmail.com)  
303/704-0700

**•Mike McKay**  
Former WQRB/Eau Claire, WI Brand  
Mgr./mornings  
[McKProd@charter.net](mailto:McKProd@charter.net)

**•Jimmy Elliott**  
Former WOVK/Wheeling, WV WPP/PD/  
MD/mornings  
[JimmyElliottSchlosser@gmail.com](mailto:JimmyElliottSchlosser@gmail.com)

**•JJ Cook**  
Former iHeartMedia/Cedar Rapids,  
IA SVPP  
[IowaViking@mchsi.com](mailto:IowaViking@mchsi.com)

**•Jim O'Hara**  
Former iHeartMedia/Quad Cities, IA  
SVPP & Country WLLR PD/on-air  
[JimOHara@mchsi.com](mailto:JimOHara@mchsi.com)

**SEEKER SPOTLIGHT**



**•JIM O'HARA**

Former iHeartMedia/Quad Cities, IA SVPP &  
Country WLLR PD/on-air

[JimOHara@mchsi.com](mailto:JimOHara@mchsi.com)

Check out his website [here](#), listen to his  
demos [here](#) and connect via LinkedIn [here](#).

"I'm a big believer in personality-driven, local radio. On-air talent talking about – and being part of – the community is what makes the station memorable and ultimately more marketable. And, I'm pretty good at making that kind of radio happen. As a programmer, on-air talent and former GM, I bring a unique perspective in understanding how revenue generation is everyone's job ... every day. We each have a role in building ratings and revenue, from both our on-air and digital products."

**•Steve Powers**  
Former iHeartMedia/Mobile, AL SVPP  
[StevePowers961@yahoo.com](mailto:StevePowers961@yahoo.com)

**•Jim Dorman**  
Former iHeartMedia/Wichita SVPP &  
Country KZSN PD/middays  
[JimDorman2@aol.com](mailto:JimDorman2@aol.com)

**•Eddie Rupp**  
Former iHeartMedia/Sarasota, FL SVPP/  
OM & Country WCTQ middays  
[ER-1001@hotmail.com](mailto:ER-1001@hotmail.com)

**•Mike Rowe**  
Former WAMZ/Louisville nights  
[MikeRoweRadio1@yahoo.com](mailto:MikeRoweRadio1@yahoo.com)

**•Mike Tyler**  
Former WCKT/Ft. Myers, FL PD/afternoons  
[RadioGuy.101@gmail.com](mailto:RadioGuy.101@gmail.com)

**•Amy Lynn**  
Former WCKT/Ft. Myers, FL middays  
[AmyLynnRadio@gmail.com](mailto:AmyLynnRadio@gmail.com)

**•Jake McBride**  
Former KKIX/Fayetteville, AR afternoons  
[MrJakeMcBride@gmail.com](mailto:MrJakeMcBride@gmail.com)

**•Bill "Stu" Stewart**  
Former KASH/Anchorage, AK PD/  
morning co-host  
[BStu1013@gmail.com](mailto:BStu1013@gmail.com)

**•Doug Kramer**  
Former KHLL/Little Rock, AR mornings  
[DougKramerLive@gmail.com](mailto:DougKramerLive@gmail.com)

**•Ashley King**  
Former KHLL/Little Rock, AR afternoons  
[AKingMarsh@gmail.com](mailto:AKingMarsh@gmail.com)

**•Matt Cruz**  
Former KSSN/Little Rock, AR on-air/  
promotions  
[MatthewsPersonalEmail@gmail.com](mailto:MatthewsPersonalEmail@gmail.com)

**•Jeremy "Otis" Maher**  
Former WUBL/Atlanta MD/afternoons  
[JeyMaher20@yahoo.com](mailto:JeyMaher20@yahoo.com)

**•Katie Green**  
Former WRJY/Brunswick, GA middays  
[KatieGreenVoice@gmail.com](mailto:KatieGreenVoice@gmail.com)

**•Claire Beverly**  
Former KNUC/Seattle mornings  
[ClaireBeverlyRadio@gmail.com](mailto:ClaireBeverlyRadio@gmail.com)

**•Bryant "Ryder" Konold**  
Former KNUC/Seattle mornings  
[BryantRyderKonold@gmail.com](mailto:BryantRyderKonold@gmail.com)

**•Jess Tyler**  
Former WOKQ/Portsmouth, NH Brand  
Mgr./MD/middays  
[JTylor1999@yahoo.com](mailto:JTylor1999@yahoo.com)

**•Mark Phillips**  
Former KPLX/Dallas afternoons  
[MarkP995@gmail.com](mailto:MarkP995@gmail.com)  
214-226-9076

**•Nancy Ryan**  
Former WRBT/Harrisburg, PA mornings  
[NancyRyan949@gmail.com](mailto:NancyRyan949@gmail.com)

# December 2020 PPM Scoreboard

Country radio shares were down 10.2 points (-3.0%) compared to November for the third lowest total in the PPM era. Of the 88 stations listed, 33 saw share increases, 45 decreased and 10 were flat month-to-month. Overall cume was down 1,363,500 (-5.42%) compared to last month. Compared against last December's overall 349.4, radio shares were down 20.4 points (-5.8%). Cume decreased from 31,161,800 to 23,778,600 (-23.7%) year-over-year. Note that December 2020 PPM dates range

from November 5-December 2. Revisit coverage of Country cume decreases in the May 26 issue of Country Aircheck Weekly [here](#) and the September 14 issue of Country Aircheck Weekly [here](#).

Legend: A "+" indicates a Classic Country outlet; a "^" designates co-owned Country stations in the metro; a "t" indicates a tie; and a "\*" indicates a station that is a recent subscriber for which ratings were not currently available. Ranks are among subscribers.

## Dec. PPM Top 10

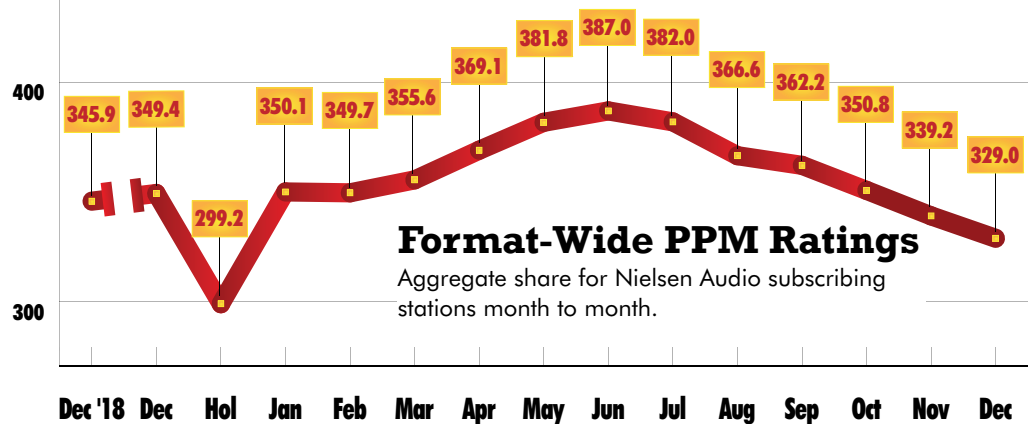
SHARE		
1	<b>WCTK/Providence</b>	<b>8.8</b>
2	KSD/St. Louis	<b>8.6</b>
3	WSOC/Charlotte	<b>7.6</b>
4	WUBE/Cincinnati	<b>6.9</b>
5	WGAR/Cleveland	<b>6.8</b>
6	WPOC/Baltimore	<b>6.7</b>
7t	KNCI/Sacramento	<b>6.5</b>
7t	WCOL/Columbus	<b>6.5</b>
9	WMIL/Milwaukee	<b>6.2</b>
10	WWYZ/Hartford	<b>5.9</b>

Station/City	Nov 6+ Share	Rank	Dec 6+ Share	Rank	Nov Cume	Dec Cume	Station/City	Nov 6+ Share	Rank	Dec 6+ Share	Rank	Nov Cume	Dec Cume
WUBL/Atlanta	3.7	9	3.8	9	483,600	471,300	WKMK/Middlesex (Monmouth)	1.0	23t	1.0	22t	38,500	35,400
WKHX/Atlanta	2.7	13t	2.9	14	350,000	377,500	WMIL/Milwaukee	6.0	4	6.2	4	283,600	290,200
KVET/Austin ^	3.9	6	4.7	5	213,000	225,800	WMBZ/Milwaukee ^	1.4	11t	1.4	11t	103,400	99,200
KASE/Austin ^	3.8	7	4.2	6t	185,800	171,100	WVTV/Milwaukee ^	1.2	14	1.4	11t	77,400	80,400
KOKE/Austin	0.7	22t	0.7	23	72,700	63,000	KEEY/Minneapolis	4.9	7t	5.3	6	407,300	358,800
WPOC/Baltimore	5.2	5	6.7	2	274,000	260,900	KMNB/Minneapolis	2.8	15	2.8	15	342,000	329,600
WKLW/Boston	3.5	9t	3.5	10	482,400	429,000	WSM-FM/Nashville ^	4.2	11	5.4	7t	185,400	186,500
WBWL/Boston	2.3	15t	2.1	16	315,700	280,100	WSIX/Nashville	4.4	8t	4.8	9	189,900	188,100
WCTK/Boston (Providence)	0.7	24	0.8	25	93,600	93,400	WKDF/Nashville ^	3.8	13	3.1	13	153,900	126,800
WSOC/Charlotte	7.3	4	7.6	2	413,400	409,900	WNSH/Nassau (New York)	1.1	25	0.8	26	110,600	90,600
WKKT/Charlotte	7.4	2t	5.4	6	400,500	344,700	WNSH/New York	2.1	19	1.6	21	825,300	696,900
WUSN/Chicago	2.4	15	2.6	12	741,700	697,500	WGH/Norfolk	4.2	4t	4.7	4	173,300	183,000
WUBE/Cincinnati ^	7.7	3	6.9	4	331,500	325,500	WWKA/Orlando	3.9	8t	4.4	7	200,800	217,400
WNKN/Cincinnati+	4.2	10	3.0	12	167,300	144,600	WXTU/Philadelphia	4.0	10	3.5	10	491,300	454,900
WNNF/Cincinnati	2.1	15	2.0	14t	185,600	160,700	KNIX/Phoenix	6.1	2	5.6	4	565,400	529,900
WYGY/Cincinnati ^	0.9	19	0.9	19	102,000	96,800	KMLE/Phoenix	3.3	12t	2.6	15	459,100	433,100
WGAR/Cleveland	7.4	4	6.8	6	306,600	305,900	WPGB/Pittsburgh	3.8	11	3.1	12	177,300	184,200
WCOL/Columbus, OH	8.2	2	6.5	4	269,600	245,500	WDSY/Pittsburgh	4.1	7t	5.1	5	242,900	250,000
KPLX/Dallas ^	4.6	6	3.6	11	860,500	817,500	WLYI/Pittsburgh	1.4	15t	1.3	15	65,800	66,000
KSCS/Dallas ^	5.3	2	4.7	4	663,500	680,200	WOGG/Pittsburgh	1.0	17t	1.0	18	62,500	51,800
KYGO/Denver	4.9	2t	5.8	3	323,600	310,400	WOGI/Pittsburgh	0.9	19t	0.7	20t	80,000	74,100
KWBL/Denver	2.3	17t	2.7	13	206,600	200,200	KUPL/Portland	2.9	14	3.3	11	234,000	208,300
WYCD/Detroit	4.6	9	4.3	9t	525,100	503,900	KWJJ/Portland	2.1	18	2.8	15	211,200	232,100
WDRQ/Detroit	2.9	18	2.3	18	366,800	308,400	WCTK/Providence	8.8	2	8.8	3	284,700	251,000
WTQR/Greensboro	5.0	8	5.1	8	174,500	169,000	WQDR/Raleigh	4.8	6	4.8	7	213,100	199,700
WPAW/Greensboro	4.0	9	4.3	9	169,000	165,900	WNCB/Raleigh	3.5	12t	2.5	14t	150,900	131,300
WWYZ/Hartford	5.5	6t	5.9	7	156,900	149,100	KFRG/Riverside	4.8	2t	5.0	3	253,400	256,200
KKBQ/Houston ^	3.6	12t	3.4	12t	736,800	738,800	KNCI/Sacramento	8.1	2	6.5	4	344,500	294,100
KILT/Houston	4.0	9t	3.0	14	753,400	721,200	KUBL/Salt Lake City	5.2	6	5.0	6	235,200	222,200
KTHT/Houston ^ +	2.0	20	2.6	17	356,000	345,500	KSOP/Salt Lake City ^	2.9	14	2.7	12t	159,700	147,100
WFMS/Indianapolis	6.2	5	5.1	6	244,800	211,800	KEGA/Salt Lake City	1.7	18	1.3	20	129,700	101,400
WLHK/Indianapolis	4.1	9t	4.0	10	204,400	193,500	KCYX/San Antonio ^	4.9	5	4.5	8	401,200	387,400
WQIK/Jacksonville	5.4	6	5.3	5t	198,800	200,700	KAJA/San Antonio	3.1	13	3.2	12	302,300	301,700
WGNE/Jacksonville	3.7	10	4.1	10t	163,500	182,700	KKYX-AM/San Antonio ^ +	2.1	19	1.9	20	115,000	112,700
KFKF/Kansas City ^	5.9	4	5.4	6	245,300	199,900	KSON/San Diego	4.1	7	3.9	10t	267,900	270,800
KBEQ/Kansas City ^	4.6	9	4.9	7	228,800	216,200	KRTY/San Jose	3.3	9	3.2	9	114,400	107,400
WDAF/Kansas City	6.5	3	5.5	4t	343,500	251,000	KKWF/Seattle	3.1	14t	2.7	17	356,000	346,300
KCYE/Las Vegas	3.5	8	2.9	12t	160,500	147,800	KNUC/Seattle	3.4	10t	3.1	13t	322,400	292,600
KWNR/Las Vegas	2.6	16	2.8	14t	141,300	156,600	KSD/St. Louis	7.7	3	8.6	2	418,800	389,500
KKGO/Los Angeles	2.4	16	2.0	18	697,800	646,700	WIL/St. Louis	3.9	11t	3.2	13	381,400	320,800
WGKX/Memphis	3.0	11	3.7	9	88,000	95,700	WFUS/Tampa	5.0	6	5.4	4	383,500	398,700
WLFP/Memphis	2.5	13	1.7	14	72,700	71,700	WQYK/Tampa	3.8	10	4.0	10t	283,000	270,400
WKIS/Miami	3.0	12t	3.0	11	341,200	318,100	WMZQ/Washington	2.7	13	2.3	14	323,600	290,100
WNSH/Middlesex (New York)	3.3	10	3.2	13t	128,000	128,900	WIRK/West Palm Beach	2.2	10	2.1	10	80,200	85,300

## Dec. PPM Top 10

### CUME

1	<b>KPLX/Dallas</b>	<b>817,500</b>
2	KKBQ/Houston	<b>738,000</b>
3	KILT/Houston	<b>721,200</b>
4	WUSN/Chicago	<b>697,500</b>
5	WNSH/New York	<b>696,900</b>
6	KSCS/Dallas	<b>680,200</b>
7	KKGO/Los Angeles	<b>646,700</b>
8	KNIX/Phoenix	<b>529,900</b>
9	WYCD/Detroit	<b>503,900</b>
10	WUBL/Atlanta	<b>471,300</b>



## Format-Wide PPM Ratings

Aggregate share for Nielsen Audio subscribing stations month to month.