

COUNTRY AIRCHECK WEEKLY

February 28, 2022, Issue 796



20/22 Vision: CRS/Country Aircheck Awards winners and Country Aircheck staffers. See the full list of winners [here](#).

©2022 Country Aircheck™ — All rights reserved. Sign up free at www.countryaircheck.com. Send news to news@countryaircheck.com

ERIC CHURCH HEART ON FIRE

TOP 10 AND CLIMBING!
120M GLOBAL STREAMS (ATD)
CONVERT NOW

FOR YOUR ACM CONSIDERATION – ENTERTAINER OF THE YEAR

**DATES IN
PICKUP
TRUCKS KASSI
ASHTON**

**#1 MOST
ADDED!**

**FIRST WEEK
STATIONS:**

KKBQ Music Choice
KSD KEEY WWKA
WYCD WKKT KMLE
KNUC WIL KAJA
KBEQ WDXB KCCY
KHGE KXLY KJUG
KASE WKRO WTHT
KRTY WGNE WCKN
WPOR WKMK WUSJ
SXM The Highway



**THANK YOU,
COUNTRY
RADIO!**



CRS: Forward Facing

"Some Girls," including one of "The Good Ones" having a "Hell Of A Year" played "Drinking Songs" until they were "Straight Up Sideways" as New Faces of Country Music returned Friday (2/25) to conclude **CRS 2022**.

"It's been quite a long time since we've played to a bunch of people sitting down in a hotel ballroom," joked MCA's **Parker McCollum**.



Parker McCollum

"No one's throwing beer, no one's throwing bras ... it's kinda nice." McCollum kicked the night off with current single "To Be Loved by You" followed by his first No. 1, "Pretty Heart," "Hell Of A Year" and closer "I Can't Breathe." Following in the footsteps of his hero, Pat Green, McCollum is playing both the New Faces and Houston Rodeo stages this year, a feat he credits Country radio

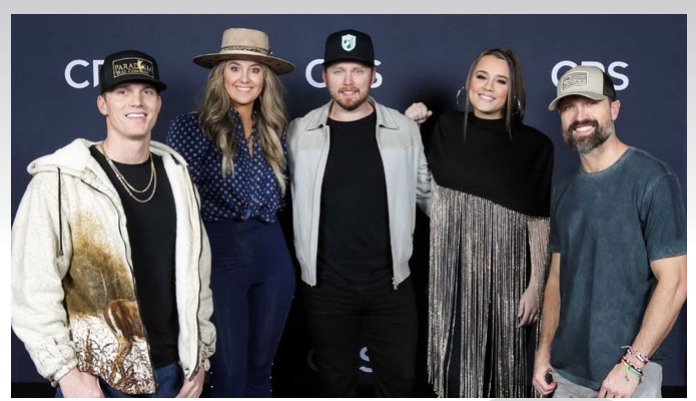
with helping achieve ... without sounding like he's "kissing ass," of course. "I never got that opportunity until Country radio decided to give the new guy a shot," he admitted. "I appreciate it with all my heart."

Warner/WAR's **Gabby Barrett** progressed through her journey of playing for "fruits and vegetables" at a grocery store to the New Faces stage with a set featuring "Jesus And My Mama;" her second No. 1, "The Good Ones;" an acoustic performance of "How Great Thou Art" leading into the No. 1 that started it all, "I Hope;" and current single "Pick Me Up."



Gabby Barrett

(continued on page 11)



Face Time: New Faces of Country Music **Parker McCollum, Lainey Wilson, Jameson Rodgers, Gabby Barrett** and **Walker Hayes** (l-r) close CRS 2022.

HoS: Field, Goodman

Audacy CEO **David Field** touted the current "golden era of audio" as Friday's (2/25) Heads of State session commenced.

Pointing to the company's commitment to podcasting and key metrics including "total listening hours" and "monthly average uniques," he said one of the industry's biggest challenges is the glut of content. "How do you serve that without driving [listeners] crazy?"



David Field, Sarah Trahern and **Randy Goodman**

©2022 Country Aircheck™ — All rights reserved. Sign up free at www.countryaircheck.com. Send news to news@countryaircheck.com

ONE MISSISSIPPI
KANE BROWN

#1 CA/MB
 BB/BDS

THANK YOU COUNTRY RADIO

RCA RECORDS



RANDY HOUSER

RH

Note to self

MAGNOLIA

EST.

2022

MUSIC GROUP

Answering moderator and CMA CEO **Sarah Trahern's** question about flipping WNSH/New York out of the format, Field said, "That was painful for us to do. We understood the weight of that decision." He followed by emphasizing the company's commitment. "Put in the context of 21 Country stations, we are leaning in hard and would be really happy to add more if it made sense elsewhere. [New York] was just a business decision."

Echoing one of Fields' comments, Sony/Nashville Chairman/CEO **Randy Goodman** said, "Breaking through the clutter has never been harder." Hence, the company's growing reliance on analytics. Mitigating the "lack of synchronicity between how radio is programming our music and how DSPs are curating and playlisting" is the focus of recent strategy shifts. "[Radio] is alive and well and will continue being a big part of our business. Radio is no longer the tip of the spear, but part of the holistic marketing mix." —**Chuck Aly**

Stand By Your Brand

"A brand is a collection of perceptions that create emotional connections." That's the definition given by Essential Broadcast Media CEO **Ebie McFarland** as she moderated a discussion of the best ways to connect brands with artists and radio. New Heartland Founder/CEO **Paul Jankowski** said the essential question is, "Do the artist's core values and the brand's core values align?" In relation to radio, Empire KRTY/San Jose VP/GM **Nate Deaton** added, "Everything at a radio station comes back to the branding you do. When you tune into KRTY, we don't want you to hear 'country music,' we want you to hear 'KRTY music.'"

When the topic of branding challenges arose, NASCAR Sr. Mgr./Multi-cultural & Youth Marketing **Erica Wilkerson** explained, "We banned the Confederate flag, and we're proud of that. NASCAR is about being inclusive, and if something stands in the way of that, we're not afraid to remove it to attract new people." Jankowski added, "When someone screws up, own up to it, fix it, rip off the rearview mirror and move on." —**Chris Huff**



Nate Deaton, Erica Wilkerson, Paul Jankowski and Ebie McFarland

Shelton Blakes Espo's Record

"I've never considered myself an artist; I've always just considered myself a singer," said WMN's **Blake Shelton**. Nevertheless, **CRS 2022's** slate of panels and presentations

officially closed Friday afternoon (2/25) as **Country Aircheck's Lon Helton**

conducted the "Artist Spotlight Interview" with Shelton. More than an hour of insights and laughter kicked off with the often-talked-about but rarely seen **New Faces** video Shelton debuted two decades ago.

The project, which Shelton called "way better than most of my music videos," was an inside joke and a nod to the now-infamous "Bridge Bar Incident" (IYKYK), which happened a year prior to Shelton being named a New Face.

The wide-ranging conversation had Shelton possibly breaking Warner Music Nashville Chairman/CEO John Esposito's onstage F-bomb record. From early hits and misses to becoming a chart-topping mainstay, Shelton lost a mullet and a cowboy hat, joined *The Voice*, and expounded on spirituality, being a husband to Gwen Stefani and a stepfather to her three boys. "When I was fortunate enough to start saying the word 'no' is when my career started changing directions," he explained. Among the stories exchanged was the genesis of Shelton being "gifted" his now-signature song, "Ol' Red," by writer **Hoyt Axton** on his 18th birthday and Shelton's far-less-successful attempt at being the first to cut "I Wanna Talk About Me," which went on to be a hit for Toby Keith. "Shit worked out, Lon," Shelton explained, tipping his hat to Warner and Country radio. "I wanna make great records, and the moment I feel like I'm not relevant anymore, I don't think I'm gonna make 'em ... my reward is when I look back on 20 years and go, 'How the fuck did that happen?'" —**Monta Vaden**



Blake Shelton and Lon Helton

That's The Ticket: Touring

RCA's **Chris Young** headlined "The Business Of Touring" Friday afternoon (2/25) with AEG Presents Dir./Artist Development-Global **Shelby Moran** serving as moderator. Young was joined by WME Partner **Nate Towne**, The AMG Pres./CEO **Rob Beckham** and AEG Presents SVP/Global Touring & Talent **Adam Weiser** to dissect the current state of touring and the impact

©2022 Country Aircheck™ — All rights reserved. Sign up free at www.countryaircheck.com. Send news to news@countryaircheck.com

COLE SWINDELL & LAINEY WILSON
Hello TOP 15!
#13* CA / #15* BB
Top 10 Spin Inc BOTH charts!
#3 Shazam's
#6 Weekly Consumption (UP 48%)
#7 Top Selling Single

JASON ALDEAN
TRUBLE WITH A HEARTBREAK
RISING FAST!!
Top 25 already!
Strong CPS rank at #15!
HAPPY BIRTHDAY JASON!

DUSTIN LYNCH
PARTY MODE ON FIRE!
UP 5 spots to #39* CA!
UP 3 SPOTS TO #36* BB!
4th Most Added
KKGO, KKBQ, WDRQ, KJKE, KHEY, WYNK, WMAD
#9 CPS!

CHASE RICE
IF I WERE ROCK & ROLL
#46* CA
#49* BB
UP 8% SINGLE SALES!

BBR
BBR
BMG

MAX SPINS NOW

Half OF MY Hometown

**KELSEA BALLERINI
FEAT. KENNY CHESNEY**



BLACK RIVER
RECORDS

56TH ANNUAL ACM AWARDS

the live sector has had on the panelists. Topics covered included hard tickets versus soft tickets, how to know when to move up or down in venue size, routing a tour based on radio play and the effect of no-show attendees in a post-COVID era.



Adam Weiser, Nate Towne, Chris Young, Rob Beckham and Shelby Moran

"I'm probably the most annoying artist, because I look at everything," quipped Young. Beckham added, "Every artist can be white-hot for a little while, but you won't be white-hot forever," as he explained the strategy behind Young's moves from club gigs to arenas, while maintaining an eye on sell-out rates. Weiser added, "Everything has to be done with purpose." All agreed that radio airplay is among the largest indicators of touring success with Towne saying, "You can feel the markets where radio has played the songs." Beckham confirmed, "Radio is the super-sizer."

—Monta Vaden

BMLG Lunch: Art & Soul

The **BMLG** Luncheon showcased the range of the label group's roster – from artists experiencing their first in-person CRS to those well-versed in ballroom performances and clinking cutlery. "You are the conduit for our listeners, for our fans," Pres./CEO **Scott Borchetta** said by way of introduction. "Country music is their best friend. And your best friends are coming back to see you."

The show opened with **Laci Kaye Booth's** rendition of Fleetwood Mac's "Dreams" – sans skateboard and cranberry juice – followed by **Conner Smith**, who performed debut single "Learn From It." Next up were **Tiera Kennedy** and **Jackson Dean** with "Found It In You" and "Don't Come Lookin'," respectively.

Making her in-person CRS debut, **Callista Clark** premiered "Brave Girl" and a song written via Zoom during quarantine, "Gave It Back Broken." **Riley Green** delivered platinum singles "There Was This Girl" and "I Wish Grandpas Never Died" – can you imagine how many grandpas there'd be? – prior to **Carly Pearce's** "What He Didn't Do," "Never Wanted To Be That Girl" and "29," which earned the event's first standing ovation. The second came during **Lady A's** Hillary Scott-led "Worship What I Hate," preceded by "Champagne Night" and "What A Song Can Do." The trio closed the event with "What If I Never Get Over You." "I'm so proud to be a part of this incredible label," said Scott. "The artistry, the people. From the bottom of my heart, thanks for such an incredible place to make art, and thank y'all for playing it."



Laci Kaye Booth



Riley Green



Lady A

—Caitlin DeForest

©2022 Country Aircheck™ — All rights reserved. Sign up free at www.countryaircheck.com. Send news to news@countryaircheck.com

DYLAN SCOTT
NEW TRUCK
TOP 30!

CURB RECORDS
 curb.com

ERIN KINSEY “JUST DRIVE”

GOING FOR ADDS 3/7

GET IT NOW

22M+
TOTAL STREAMS

 **#3**
COUNTRY DEBUT

 **17M+**
VIEWS

100K+
SINGLES SOLD

 **#8**
OVERALL DEBUT

 **3M**
LIKES

EVP Promotion and Commercial Strategy – Josh Easler 615-969-7262 josh.easler@recordsco.com

Co-Head of Promotion – Jamice Jennings 615-243-6779 jamice.jennings@recordsco.com

Co-Head of Promotion – Andy Elliott 615-585-4101 andy.elliott@recordsco.com

Regional Promotion – Chele Fassig 704-724-1166 chele@recordsco.com





Hi, Women: Columbia's **Maren Morris** hosts Sony/Nashville's *Girls Night Out* during CRS with attendees including Country Radio Hall of Fame inductee **Whitney Allen** (inset, r).

Mental Health: Syndrome Solutions

Career/life coach **Dan Mason** led "I'm A Fraud: Dealing With Imposter Syndrome" with *The Radio Fam* owner/content creator **Marie LeMaitre**, former on-air personality turned Twitch content creator **Kyle King** and Throwback Brands CEO **Tony Lorino**. Each shared their battles with feeling unworthy while offering tips on overcoming the problem. Among the most important, Mason pointed to finding or creating a team with a high level of organizational safety.

"Imposter Syndrome affects approximately 70% of high performers," Mason assured the room. Many attendees nodded along as the panel explained how the issue contributed to their career trajectories and continues to impact daily life. Lorino offered, "Confidence is being willing to try." King concurred, adding, "If you wait for the perfect setup, you're never going to get started." On dealing with feelings of unworthiness, LeMaitre explained, "Assess what is working best," then continue tailoring the approach on a regular basis. Mason shared that he keeps a photo album on his phone labeled "Praise" with screen shots of emails, texts or notes offering support for his work. Indicators of Imposter Syndrome include:

- Perfectionism
- Falling into the comparison trap
- Workaholism
- Burnout
- Shame

—Monta Vaden

Flexibility In Leadership

Strategy And Leadership, LLC Founder **Liz Allen Fey** presented a "TedTalk" styled "Leading Through An Ever Changing Landscape" during the Friday morning's (2/25) session. She focused on navigating the world of working relationships and asked attendees to ponder, "How do we become more adaptable and adjustable? How do we do our best work together?"



Fey noted the world has segued from employer-driven to employee-driven, with the shift propelled by the pandemic. "Flexibility is the word we need to think about," she stated. "Talent now is a precious commodity." Fey's summarized advice includes:

- Focus on improving positional perceptions.
- Those who have the most flexibility have the most power.
- Leadership is creating the circumstances for people to bring their best.
- Apply the five levels of listening to determine if you should step in, step up or step out of a situation.

—Monta Vaden

Format Findings

"Right now, Hip-Hop and R&B streaming is a beast; trying to get the hits is like drinking water through a fire hydrant," said Cumulus/Nashville VP/Urban **Kenny Smoov** during Friday's (2/25) "Don't Hate Us Cuz You Ain't Us!" panel. Focused on determining what Country can learn from other formats, the session had WUBL/Atlanta SVP/Programming **Meg Stevens** moderating.

Smoov noted Urban's ability to stay on top of trends and "go through the minefield" of songs stemming from social media, then programming those songs for radio. "We're going to be in the moment and right there with the listeners," he said. "When they're doing it, we're going to be doing it. When we don't do that, we start to lose a little bit of our relevance."

Alternative KTCL/Denver PD **Jeb "Nerf" Freedman** said, "Taking risks is a big thing in Alternative radio that I'm not aware Country radio does very often." He shared a story of discovering a band online then playing their song on-air all within a few hours.

Top 40 WDCG/Raleigh personality **Erica DeLong** suggested Country radio lean into current events and share those moments on-air and online. Fellow panelist Smoov referenced the [recent viral video of Luke Bryan](#) changing a fan's flat tire. "Can you imagine Usher changing someone's tire?" he laughed. «That's just not going to happen.» DeLong said country artists' ability to "keep their crazy under wraps" goes a long way in connecting with listeners.

—Addie Morton

Lady A
**What
A Song
Can Do**

*Makes you wanna take a Sunday drive
Throws you right back to a different time*

Puts your lighter up

Singing loud and out of tune

*It puts a little sound in an empty space
And for a little while, lets you drift away*

It's simple, but it's true

Yeah, it's crazy what ^{the radio} a song can do

63 Stations Already On!

KAWO • KBEQ • KCCY • KCYE • KCY Y • KDRK • KHEY • KHGE
KHKI • KILT • KJKE • KJUG • KKBQ • KKGO • KKIX • KMN B
KNIX • KPLM • KRST • KRTY • KRYS • KSOP • KSSN
KTOM • KTST • KUZZ • KXLY • KZSN • MUSIC CHOICE
WBEE • WCKN • WCOL • WFUS • WGAR • WGH • WGNE
WGTY • WJVC • WKMK • WKRO • WOGK • WPOR • WQDR
WQHK • WQIK • WQMX • WQYK • WRBT • WRNS • WRNX
WSLC • WTGE • WTHT • WUBL • WUSJ • WWGR • WWKA
WWQM • WXBQ • WXC Y • WXTU • WYCT • WYNK

THANK YOU TO ALL THE BELIEVERS!

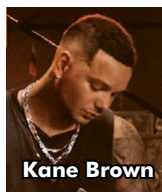
BMLG
RECORDS



Ready, Willing & Table: CRS Thursday's ping-pong tournament gets underway. UMGN's Royce Risser (r) battles Kid Rock in the foreground.

Chart Chat

Congratulations to **Kane Brown, Steve Hodges, Dennis Reese, Lauren Thomas** and the **RCA** promotion team on landing this week's No. 1 with "One Mississippi." This is Brown's seventh visit to the top of the chart. Geographically speaking, this is the first No. 1 song to name (or partially name) a state in its title since Parmalee's "Carolina" in Dec. 2013. Songwriters are **Ernest K. Smith, Jesse Frasure, Levon Gray** and Brown.



Kane Brown

Kudos to **Katie Dean** and the **MCA** crew for racking 24 adds for **Kassi Ashton's** "Dates In Pickup Trucks." This is the first debut artist for MCA to top the CA/MA Add Board since **Sam Hunt** did so with "Leave The Night On" in June 2014.

News & Notes

Key Networks' daily **Shawn Parr's Across The Country** adds 13 new affiliates: **WOAB/Ozark, AL, WQLC/Lake City, FL, WMAF/Madison, FL, WFDZ/Perry, FL, KCLK/Lewiston, ID, WVLC/Lexington, KY, KYLS/Farmington, MO, KNIM/Marysville, MO, KELE/Mountain Grove, MO, KPWB/Piedmont, MO, KUBQ/La Grande, OR, WVWZ/Lewiston, PA** and **WGRX/Fredericksburg, VA**. More info [here](#).

ABC Audio is rolling out **Air Power Country** on its country RSS Feed, including "Country Life" hosted by **Stephen Hubbard**. More info [here](#).

WXBQ/Johnson City, TN and **KLLL/Lubbock, TX** have added **Skyview Networks' CT40 with Fitz** to their programming.

The **Brent Cobb** and **Amy Ray**-hosted **9th Annual Gretsches Presents Georgia on My Mind** benefit concert returns to Nashville's Ryman Auditorium May 10; lineup and tickets [here](#).

Carly Pearce is one of six 2022 inductees into the **Kentucky Music Hall of Fame**. More details [here](#).

State51 Music Group Head of Business Development **Rob Weitzner** has been named EVP/Revenue & Growth for **Artist Growth**.

iHeartMedia **KWBL/Denver** midday personality **Denise Plante** has launched a national campaign supporting the **American Cancer Society's Researchers** in honor of her late father, **Frank Nelson**. Support her mission [here](#).

Pearl's **Garth Brooks** will return to **Nissan Stadium** April 16 for his makeup date from the 2021 rainout. It will be Brooks' final stadium tour stop in Nashville and the only one in Tennessee. Tickets go on sale March 4 at 10am CT [here](#).

Rodney Crowell will be the featured artist at the **Country Music Hall of Fame and Museum (CMHoF)** March 19 for the **Poets And Prophets** program. Details and ticketing information [here](#).

Ruby Radio/Elko, NV – which includes Country **KBGZ/Spring Creek, NV** – has been sold to **Global One Media, Inc.** Pres./CEO **Richard Hudson** for \$1,000,000.

CRS: Forward Facing

(continued from page 1)

Barrett described the latter as a "laid back country song," adding, "Like you haven't heard one of those."

Both River House/Columbia's **Jameson Rodgers** and Broken Bow's **Lainey Wilson** recalled their previous CRS experiences, the former playing the stage right outside the ballroom doors and the latter sneaking in. "I [dreamed] of one day being on this stage, a part of this show, [and] everybody in here is responsible for that," Rodgers said. Wilson echoed, "Everybody in this room has changed my life. All I've ever wanted was just a shot. And every single one of y'all here tonight gave that to me."



Jameson Rodgers

Rodgers followed his second No. 1, "Cold Beer Calling My Name," with his first as an artist, "Some Girls," and as a songwriter, "I Don't Know About You." Drawing from the line "I had every Eagles record," he began next single "Missing One" with the opening vocals from "Seven Bridges Road."



Lainey Wilson



Walker Hayes

Following an [intro video](#) featuring Cole Swindell, Jimmie Allen, Hardy and Tracy Lawrence donning her signature bell bottoms, Queen's "Fat Bottomed Girls" bled into "Straight Up Sideways" as Wilson took the stage. "Y'all made my dreams come true with this song right here," she said of "Things A Man Oughta Know" before offering a "sneak peek" of next single "Heart Like A Truck." "I know all of us in this room have been wrung through the damn ringer this past few years," she said. "It's been hard, but we have pulled through it. All of y'all here have a heart like a truck."

The self-proclaimed "oldest new face," Monument's **Walker Hayes**, closed out the show, and with it, CRS 2022. "It's been a long journey for me," he said. "It just makes this sweeter." Starting with the high-energy "AA," Hayes then dared the audience to "get up and dance" for "Fancy Like" – an assignment newly named Country Radio Hall of Famer Becky Brenner understood – and shared a song inspired by his late father, "Briefcase." "My dad probably called [WKSJ/Mobile PD] Bill Black a million times," he recalled. "Radio is very dear to my heart." —Caitlin DeForest

CAC

ADD/CONVERT TODAY

**GIVE
HEAVEN
SOME
HELL**

HARDY

TOP 15

AKS

BEST THING SINCE BACKROADS

TOP 20



**FLOWER
SHOPS**
feat. Morgan Wallen

TOP 30

ERNEST

IMPACTING 3/7

0 10 20 30 40 50 60 70 80 90 100
WASTED ON YOU

MORGAN

WALLEN

BIG LOUD

January 2022 PPM Scoreboard

Country saw its annual post-Christmas rebound in the January 2022 PPM Book (1/6/22-2/2/22). A full three quarters of PPM stations saw share increases, and the total share for the format rose from 281.3 to 326.7. The 16% increase is almost identical to the Holiday to January increases of 15% and 17% seen in the past two years. Despite the rebound, January 2022 ranks as the fifth lowest month for Country shares in the PPM era, and year-to-year shares are off 6.8%.

The cume picture looks less rosy, as the total cume of all stations edged up just 1% from Holiday to

January, and 11 stations recorded all-time low PPM cumes, including two of this month's top 10 cume stations. Year-to-year cume is off 8.2%. **KKBQ/Houston** retained its cume crown this month, while **WCTK/Providence** took the biggest share jump of any station this month to earn the largest share in the format for the first time since Holiday 2020. Legend: A "+" indicates a Classic Country outlet; a "^" designates co-owned Country stations in the metro; a "†" indicates a tie; and a "*" indicates a station that is a recent subscriber for which ratings were not currently available. Ranks are among subscribers.

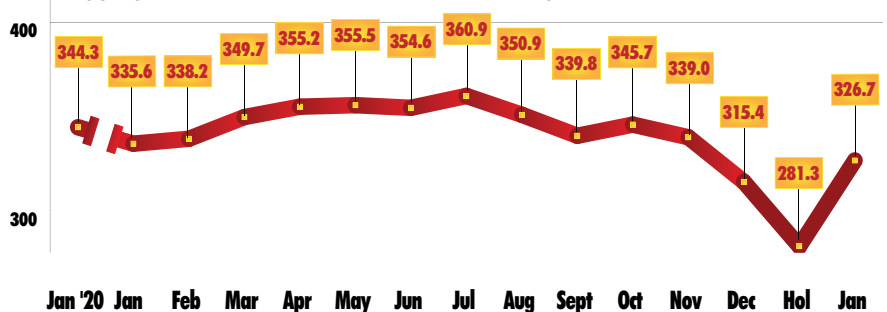
Jan. PPM Top 10				
SHARE				
2	1	WCTK/Providence		10.6
1	2	WVYZ/Hartford		8.6
8	3	KSD/St. Louis		8.2
3	4	WQIK/Jacksonville		7.9
5	5	WCOL/Columbus		7.8
4	6	KSOP/Salt Lake City		7.4
9	7†	WSIX/Nashville		6.9
--	7†	WMIL/Milwaukee		6.9
--	9	WPOC/Baltimore		6.2
10†	10	WGNE/Jacksonville		6.1

Station/City	Hol '21 Share	Rank	Jan '22 Share	Rank	Hol '21 Cume	Jan '22 Cume	Station/City	Hol '21 Share	Rank	Jan '22 Share	Rank	Hol '21 Cume	Jan '22 Cume
WKHX/Atlanta	2.5	12	2.8	12†	323,700	282,800	WMIL/Milwaukee	4.8	6†	6.9	5	255,400	237,900
WUBL/Atlanta	2.0	16	2.5	14	293,200	348,100	KEYY/Minneapolis	3.9	11	4.4	10	402,700	396,800
KASE/Austin ^	3.3	9	4.3	10	149,500	168,800	KMNB/Minneapolis	2.5	15	2.2	16	298,500	295,700
KVET/Austin ^	5.8	5	5.3	6	237,800	219,700	KLCI/Minneapolis+	1.7	16†	2.0	17	105,300	100,500
KOKE/Austin	0.8	20†	0.9	23	58,300	55,500	WKDF/Nashville ^	2.3	14	2.6	13†	155,100	133,400
WPOC/Baltimore	4.9	3	6.2	4	256,300	307,500	WSIX/Nashville	5.4	6	6.9	2†	195,400	208,500
WKLB/Boston	3.5	8	4.0	8	436,900	412,900	WSM-FM/Nashville ^	4.1	10	4.3	11	162,200	164,000
WBWL/Boston	1.7	18†	1.8	17†	270,400	253,300	WGH/Norfolk	3.5	10†	5.2	7	148,400	138,200
WCTK/Boston (Providence)	0.4	25†	0.5	25†	82,100	75,900	WUSH/Norfolk	3.8	9	4.2	10	136,900	132,400
WKKT/Charlotte	4.2	9	4.8	7	271,100	241,500	WWKA/Orlando	3.9	10	4.3	10	168,100	159,800
WSOC/Charlotte	4.8	6	4.7	8	340,300	251,800	WXTU/Philadelphia	2.9	10	5.3	4†	428,800	524,800
WUSN/Chicago	2.0	18	3.1	10	629,300	704,400	KMLE/Phoenix	2.8	11†	3.4	9†	380,300	382,800
WUBE/Cincinnati ^	5.2	5	5.6	5	301,300	293,200	KNIX/Phoenix	2.8	11†	3.4	9†	419,100	427,800
WNKN/Cincinnati+	1.3	16†	1.5	15†	105,500	89,500	WDSY/Pittsburgh	3.0	10	3.5	10	195,000	194,600
WNNF/Cincinnati	2.0	14	1.5	15†	150,300	114,900	WPGB/Pittsburgh	2.4	11	2.9	12	149,800	156,500
WYGY/Cincinnati ^	1.2	18	1.3	18	98,500	98,800	WLYI/Pittsburgh ^+	1.4	15	1.1	16†	75,900	65,800
WGAR/Cleveland	4.4	7†	4.3	9†	217,600	240,100	WOGG/Pittsburgh ^	0.6	22†	0.7	22	55,000	54,900
WCOL/Columbus, OH	6.0	5†	7.8	4	234,000	271,700	WOGI/Pittsburgh ^	1.5	14	1.1	16†	89,700	82,600
KPLX/Dallas ^	3.4	10†	3.3	13	606,600	605,200	KUPL/Portland	2.9	11	4.0	7	189,200	221,800
KSCS/Dallas ^	3.2	12	3.7	7†	566,700	623,700	KWJJ/Portland	2.3	16†	3.4	11†	214,500	233,600
KYGO/Denver	4.6	3†	5.5	2†	316,700	356,000	WCTK/Providence	7.8	3†	10.6	1	226,200	224,400
KWBL/Denver	2.0	18	1.8	19	155,100	151,400	WNCB/Raleigh	1.3	17†	1.9	14	86,900	120,900
WDRQ/Detroit	1.4	21	2.0	18†	203,600	207,900	WQDR/Raleigh	3.9	10	4.4	7	165,100	190,100
WYCD/Detroit	2.4	14	2.9	14	348,600	349,100	KFRG/Riverside	4.4	4	3.5	5	232,400	234,400
WPAW/Greensboro	3.9	8	3.1	10†	151,300	117,100	KNCI/Sacramento	3.3	11	5.4	5	195,200	224,800
WTQR/Greensboro	4.0	6†	5.2	7	163,500	139,500	KNTY/Sacramento+	1.9	15	1.6	15†	73,200	66,200
WVYZ/Hartford	8.7	2	8.6	2†	160,500	129,100	KYRV-HD2/Sacramento	0.3	14	0.2	25†	25,000	23,700
KILT/Houston	3.5	12	3.3	15	643,700	671,200	KEGA/Salt Lake City	0.9	22	0.8	24	94,400	103,400
KKBQ/Houston ^	3.6	11	4.0	10	735,400	723,500	KSOP/Salt Lake City	6.5	4	7.4	3	216,500	196,500
KTHT/Houston ^+	2.0	21	2.0	21	307,100	336,100	KUBL/Salt Lake City	2.1	16	2.7	14†	169,700	199,200
WFMS/Indianapolis	5.7	6	6.0	4	188,800	172,700	KAJA/San Antonio	4.4	5	4.7	7	324,000	329,000
WLHK/Indianapolis	3.8	9†	5.2	7	188,500	200,900	KCYX-San Antonio ^	4.0	7	5.1	6	390,200	399,000
WGNE/Jacksonville	5.2	6	6.1	5	199,600	207,700	KKYX-AM/San Antonio ^+	0.8	23	1.0	22	71,600	89,900
WQIK/Jacksonville	6.7	4	7.9	4	213,700	237,900	KRPT/San Antonio ^+	0.4	25†	0.5	25†	57,400	65,800
KBEQ/Kansas City ^	2.7	15	2.4	16	157,900	145,400	KSON/San Diego	3.7	9	4.2	9†	271,100	292,100
KFKF/Kansas City ^	4.3	9	4.0	9	186,500	179,600	KRTY/San Jose	4.0	7	5.4	4†	84,700	102,600
WDAF/Kansas City	4.5	8	4.2	7	246,600	267,500	KKWF/Seattle	2.7	18	2.7	17†	291,000	281,200
KCYE/Las Vegas	2.1	14†	2.6	13	123,600	137,100	KNUC/Seattle	1.9	21	2.6	19	187,000	246,900
KWNR/Las Vegas	2.2	12†	2.7	12	143,200	158,700	KSD/St. Louis	5.6	6	8.2	1	349,100	334,900
KKGO/Los Angeles	2.1	18	2.3	17†	668,100	533,400	WIL/St. Louis	4.4	9†	4.6	10	346,300	337,200
WGKX/Memphis	3.0	9	4.7	8†	111,200	129,800	WFUS/Tampa	3.9	8	4.1	7†	321,800	297,100
WLFF/Memphis	2.2	13†	2.6	12†	90,100	82,300	WQYK/Tampa	3.4	10	3.7	10	294,000	276,200
WKIS/Miami	2.3	15†	3.3	11	288,000	309,400	WMZQ/Washington	2.2	15	2.3	16	310,700	284,800
WKMK/Middlesex (Monmouth)	1.2	22	1.6	15	48,300	56,300	WIRK/West Palm Beach	2.3	11†	3.4	6	83,600	91,800

Jan. PPM Top 10			
CUME			
1	1	KKBQ/Houston	723,500
4	2	WUSN/Chicago	704,400
3	3	KILT/Houston	671,200
6	4	KSCS/Dallas	623,700
5	5	KPLX/Dallas	605,200
2	6	KKGO/Los Angeles	533,400
8	7	WXTU/Philadelphia	524,800
9	8	KNIX/Phoenix	427,800
--	9	WKLB/Boston	412,900
--	10	KCYX/San Antonio	399,000

Format-Wide PPM Ratings

Aggregate share for Nielsen Audio subscribing stations month to month.



AVAILABLE JOBS

MIDWEST

Summit **KFDI/Wichita** OM **Justin Case** is searching for a morning co-host. See the complete posting [here](#); send résumés and airchecks to Case [here](#).

Alpha **KZEN/Columbus, NE** Dir./Content **David Gustafson** is seeking a morning host. See the complete job description and apply [here](#); reach Gustafson [here](#).

Midwest/**Peoria, IL** VP/MM **Mike Wild** is looking to add an OM for the cluster that includes Country **WXCL**. See the complete job description [here](#); send résumés, cover letters and airchecks to Wild [here](#).

Townsquare **KOEL/Waterloo, IA** Dir./Content **Johnny Marks** is searching for a Brand Mgr./morning host. See the complete job description and apply [here](#); send résumés and airchecks to Marks [here](#).

Zimmer **KATI/Jefferson City, MO** OM **Jeremy Washington** is seeking a PD/morning co-host. Send résumés, social media samples and airchecks to him [here](#).

Townsquare SVP/Content & Programming **Kurt Johnson** is looking for a Dir./Content for the **Lansing, MI** cluster that includes Country **WITL**. Send résumés and airchecks [here](#).

Cumulus/**Bloomington, IL** VP/MM **Paula Williams** is looking for an OM for the five-station cluster and PD for Country **WBWN** & Classic Country **WJBC**. Complete job description and application [here](#).

Cumulus **WDRQ/Detroit** PD **David Corey** is seeking a midday personality. Send résumés and airchecks to him [here](#).

Ingstad/**Thief River Falls, MN** VP/Broadcasting **Jake Weber** is looking for a GM to oversee the cluster that includes Country **KKDQ** & Classic Country **KKAQ-AM**. Send résumés and cover letters to Weber [here](#).

Alpha/**Dayton, OH** is seeking a MM/DOS for the cluster that includes Classic Country **WCLI**. Complete job description and application [here](#).

Alpha/**Mankato, MN** MM **Shannon Magers** is looking for a Dir./Content for Country **KYSM**. Complete job description and application [here](#).

Townsquare **WITL/Lansing, MI** is searching for an Asst. Brand Mgr./morning host to succeed **Cadillac Jack**. Complete job description and application [here](#).

NRG **WYTE/Wausau, WI** GM **Aleese Fielder** is looking to add a morning co-host to join Brand Mgr./morning personality **Larry "Big Red" Wnorowski**. See complete job description and application [here](#).

Townsquare **KUSB/Bismarck, ND** Brand Mgr. **Rick Acker** is seeking a talent to join the on-air team for a newly created future opening. Send résumés and airchecks [here](#).

Saga Group PD **Scott Chase** is searching for a PD/morning host for Country **WIXY/Champaign, IL**. Send résumés and airchecks to him [here](#).

NORTHEAST

Audacy/**Rochester, NY** VP/GM **Sue Munn** is looking for an OM for the five-station cluster that includes Country **WBEE**. Complete job description and application [here](#).

Townsquare/**Atlantic City, NJ** Dir./Content **Joe Kelly** is on the hunt for an Asst. Dir./Digital & Radio Content to join the cluster that includes Country **WPUR**. Complete job description and application [here](#).

Sieks is also searching for a Digital & Radio Content Leader/on-air host and a morning co-host for **WOKQ**; apply [here](#) and [here](#), respectively.

Townsquare **WFRG/Utica, NY** Market Pres. **Karen Carey** is seeking a Brand Mgr./Digital Content Leader. Complete job description and application [here](#); send résumés and airchecks [here](#).

Connoisseur **WFRE/Frederick, MD** PD **Andy Webb** is searching for an APD/midday personality who is also a skilled social media and digital media content creator. Send résumés and airchecks to Webb [here](#).

Forever/**Ocean City, MD** MM **Mark Schollenberger** is looking for a morning personality to join Country **WCHK**. Send résumés and airchecks to him [here](#).

VerStandig **WAYZ/Hagerstown, MD** APD/MD **Dan "Tiny" Michaels** is searching for a prime-time on-air personality. Send résumés and airchecks to him [here](#).

SOUTHEAST

Summit/**Louisville** OM **Cagle** is seeking a full-time midday personality with at least two years of on-air

experience to join Country **WQNU**; PPM experience is a plus. Send résumés and airchecks to Cagle [here](#).

Mel Wheeler **WSLC/Roanoke, VA** Dir./HR **Cheryl Skinner** is looking for a midday personality. Send résumés and airchecks to her [here](#).

Gulf South **WTVY/Dothan, AL** GM **Bryan Holladay** is seeking an OM/PD/morning co-host who can also handle PD duties for Top 40 sister **WKMX**. Send résumés and airchecks [here](#).

Townsquare **KMDL/Lafayette, LA** PD **Jude Walker** is searching for a midday personality. Complete job description and application [here](#).

iHeartMedia **WUBL/Atlanta** SVP/Programming **Meg Stevens** is "looking for future stars" to join for mornings. Complete job posting and application [here](#).

Cumulus **WIVK/Knoxville** PD **Rich Bailey** is seeking a midday personality. Complete job description and application [here](#); reach Bailey [here](#).

Saga Group PD **Scott Chase** is looking for a morning host to join **WCVL/Charlottesville, VA**. Complete job posting [here](#); send résumés and airchecks to Chase [here](#).

Saga Classic Country **WSIG/Harrisonburg, VA** OM/PD **Paul "Uncle Pauly" McDaniel** is searching for a morning co-host. Send résumés and airchecks to him [here](#).

McDaniel is also seeking his own replacement as **WSIG/Harrisonburg, VA** PD following his move to the Charlottesville, VA market. Send résumés and airchecks to him [here](#).

ADX **WYCT/Pensacola** PD **Brent Lane** is looking for a midday personality. See the complete job description [here](#); send résumés, social media samples and airchecks to Lane [here](#).

iHeartMedia EVP/Country Programming Strategy **Rod Phillips** and RSVP/Programming, Virginia-Carolina Region **Chadwick "AJ" Hausknecht** are seeking a PD/midday personality for Country **WNCB/Raleigh** to succeed **Carson Blackley**. Send résumés and airchecks to Phillips [here](#) and Hausknecht [here](#).

Summit/**Birmingham** Chief of Staff **Kori White** is looking for an APD/MD/afternoon personality for Country **WZZK**. Complete job posting [here](#); send résumés and airchecks [here](#).

iHeartMedia/Arkansas-Texas SVPP **Dave Ashcraft** is searching for an APD to join Country **KKIX/Fayetteville, AR**. Candidates will also handle promotional duties for the cluster and a TBD airshift. Complete job posting and application [here](#).

Cumulus/**Huntsville, AL** VP/MM **John Lewis** and OM **Steve Smith** are seeking a Dir./Promotions & Marketing for the six-station cluster that includes Country **WWFF**. Complete job description and application [here.](#)

Forever **WOGY/Jackson, TN** EVP **Jared Mims** is searching for a morning co-host who will also write and produce newscasts each morning. Send résumés and airchecks to him [here](#).

Stephens Country **KLAA** & Classic Country **KBBK/Alexandria, LA** SVPP **Bob Thornton** is looking for an experienced PD/on-air talent to join the cluster. Send résumés, references and airchecks to him [here](#).

South Georgia Broadcasters **WBYZ/Baxley, GA** PD **Caleb Karnoutsos** is seeking a morning host to succeed the retiring **Alan DuPriest**. Send résumés, cover letters and airchecks to Karnoutsos [here](#).

Consultancy **RWPC** Pres. **JJ Jobe** has a client at a small market cluster in the South looking for "an innovative, hardworking, hands on, trustworthy" GM. Send résumés and references [here](#).

Curtis/Lenoir, NC OM **Dave Thomas** is looking for an Asst. OM & Country **WKVS** midday personality. Send résumés and airchecks to him [here](#).

W&B/Elizabethtown, KY GM **René Bell** is seeking an on-air personality to do live mornings on Classic Hits **WAKY** and track middays on Country **WLVK**. Send résumés, salary requirements and airchecks to her [here](#).

Saga **WVVR/Clarksville, TN** PD **Mike Sanders** is looking for a morning host to join incumbent **Mandi Michaels**. Send résumés, social media links and airchecks to Sanders [here](#).

SOUTHWEST

Cumulus VP/Country **Charlie Cook** is looking for a PD/midday personality for **KAYD/Beaumont, TX**. See the complete job description and apply [here](#).

Alpha/**Amarillo, TX** MM **Cal Hall** is seeking a Content Dir./Brand Mgr. for the cluster that includes Country **KGNC**. Complete job description and application [here](#).

Cumulus **KSCS/Dallas** PD **Mike Preston** is looking to add a morning show producer to join **Hawkeye In The Morning** alongside **Mark "Hawkeye" Louis** and **Michelle Rodriguez**. Complete job description and application [here](#).

Townsquare/Midland-Odessa, TX Dir./Content **Robb Rose** is seeking his own successor as he steps down to handle Brand Mgr./on-air duties for Country **KNFM**. See the complete job description and application [here](#).

Cox/Houston VP/GM **Keith Lawless** is searching for an OM to lead the cluster that includes Country **KKBQ**. Complete job description and application [here](#).

iHeartMedia **KHUD/Tucson** SVPP **Nick Bruns** is looking for a midday host who can also handle afternoons on Top 40 sister **KRQQ**. See the complete job description and apply [here](#).

WEST COAST

Cumulus **KBUL/Reno, NV** PD/morning host **Bob Richards** is seeking a full-time morning co-host to join **The Moo Crew**. Complete job description [here](#); send résumés and airchecks to Richards [here](#).

Cumulus **KATM/Modesto, CA** PD **Andy Winford** is looking for a third-mic morning co-host to join **DJ Walker** and **Jaimee Lee**. See complete job description and apply [here](#).

Townsquare **KAWO/Boise** Brand Mgr. **Chris Pickett** is searching for a live midday personality. Job description and application [here](#).

Bicoastal/Centralia, WA OM/Sports Dir. & Country **WMNT** afternoon personality **Ryan Trotter** is heading up the search for his own successor. Send résumés and airchecks to him [here](#).

AGM Regional Mgr. **Rich Watson** is looking for a PD/morning host for Country **KSNI/Santa Maria, CA**. See the complete job posting [here](#); send résumés, social links and airchecks [here](#).

Riverbend **KTHK/Idaho Falls, ID** Group PD **Viktor Wilt** is looking to add a PD/on-air talent to handle Country duties. See the complete job description [here](#); send résumés, social media links and airchecks [here](#).

OTHER

Townsquare Country Format Lead **Doug Montgomery** has immediate openings for PDs and morning talent. Send résumés and airchecks to him [here](#).

iHeartMedia EVP/Country Programming Strategy **Rod Phillips** has current openings for "great PDs in various size markets." Send résumés and airchecks to him [here](#).

Pandora is adding a Dir./Country Programming to manage the programming and curation of country music destinations on the platform. See the complete job description and apply [here](#).

Townsquare Country Format Lead **Doug Montgomery** is searching for an Exec. Prod./Content Prod./on-air talent to join nationally syndicated **Taste Of Country Nights**. Complete job description and application [here](#).

Midwest VP/Programming **Jeff McCarthy** is currently recruiting future air talent and managers. Interested candidates can send résumés, programming materials and airchecks [here](#).

BBR Music Group has two current openings for Nashville-based staff: Dir./Streaming and Dir./Digital Marketing. Complete job descriptions and applications [here](#) and [here](#), respectively.

Riser House SVP/Promotion **Bob Reeves** is looking for a person with Country radio promotion experience – multi-regional experience is a bonus – to join the label's expanding team. Send résumés to him [here](#).

ALSAC Sr. Talent Acquisition Specialist **Lisa Kerr** is searching for a Sr. Dir./Music & Audio Engagement to join the fundraising and awareness organization for **St. Jude Children's Research Hospital**. See a complete job description and apply [here](#).

A Top 50 market Dir./Programming is currently searching for an on-air talent with APD/MD experience. Interested candidates can send résumés and airchecks [here](#).

SEEKING JOBS**•Tony Kelly**

Former WUSN/Chicago morning producer
KellyT_60468@yahoo.com
708-642-8518

•Greg Cole

Former WKCQ/Saginaw, MI OM/PD
GCole27000@gmail.com
916-502-4734

•Jonathan West

Former WKTI/Milwaukee afternoons
JonathanWestRadio@gmail.com
320-774-9300

•Marc Lavik (aka Dave Marcus)

Former on-air talent
ZimaGuy@gmail.com
401-467-6737

•Cory Mikhals

Former KIZN/Boise morning co-host
CoryProductions@icloud.com

•"Big" John Horton

Former KFSA/Ft. Smith, AR afternoon host
BigJohn@TheBigJohnShow.com

•Kris Richards

Former WKJO/Smithfield, NC afternoons
FireCop947@yahoo.com

•AJ McCloud

Former WWFF/Huntsville, AL APD/afternoons
AJ.McCloud@charter.net
256-503-2301

•Mac Daniels

Former KPLX & KSCS/Dallas PD
MacDaniels@me.com

•Brittany Tully

Former WYNK/Baton Rouge PD
BrLynn718@gmail.com

•Bill Hickok

Former KBMR/Bismark, ND morning host
BillHickok1950@gmail.com

•Amy Nic

Former WAMZ/Louisville afternoon host
AmyNicRadioChick@gmail.com

•Ron "Keyes" Stevens

Former WQRB/Eau Claire, WI afternoon host
RonStvns@yahoo.com

•Scott Davidson

Former WHOF-HD2/Canton, OH PD/on-air host
Davidson1023@gmail.com

•Trace Hamilton

Former WEBG/Chicago night host
TheTraceHamilton@gmail.com

•Ryan McCall

Former WGLR/Platteville, WI MD/afternoons
RyanMcCall@yahoo.com

•David Dean

Former KXDD/Yakima, WA afternoons
DaviDean5@gmail.com

•Brian "Wookie" Kostek

Former WDSY/Pittsburgh APD/MD/afternoons
BKostek24@gmail.com

•Kim Brixton

Former WNNW/Battle Creek, MI
mornings/middays
KimBrixton@gmail.com

•Mark McKay

Former Riser House Dir./Southeast Promotion
MMcKay973@gmail.com

•Tim Taylor

Former KWJJ/Portland afternoons
Tim.Taylor1@comcast.net

•Amber Rainey

Former KSON/San Diego middays
AmberRaineyOnAir@gmail.com

•Tami Rumpfelt

Former WPAW/Greensboro afternoons
TamiRumpfelt@gmail.com

•Mike McKay

Former WQRB/Eau Claire, WI Brand
Mgr./mornings
McKProd@charter.net

•Jimmy Elliott

Former WOVK/Wheeling, WV WPP/PD/MD/
mornings
JimmyElliottSchlosser@gmail.com

•Steve Powers

Former iHeartMedia/Mobile, AL SVPP
StevePowers961@yahoo.com

•Jim Dorman

Former iHeartMedia/Wichita SVPP & Country
KZSN PD/middays
JimDorman2@aol.com

•Eddie Rupp

Former iHeartMedia/Sarasota, FL SVPP/OM &
Country WCTQ middays
ER-1001@hotmail.com

•Amy Lynn

Former WCKT/Ft. Myers, FL middays
AmyLynnRadio@gmail.com

•Bill "Stu" Stewart

Former KASH/Anchorage, AK PD/morning co-host
BStu1013@gmail.com

•Ashley King

Former KHLR/Little Rock, AR afternoons
AKingMarsh@gmail.com

•Jess Tyler

Former WOKQ/Portsmouth, NH Brand Mgr./
MD/middays
JTylor1999@yahoo.com

•Jim Pearson

Former KDBL/Yakima, WA PD/mornings
JimsCoolEmail@gmail.com
831-261-1822

•Aaron "Gator" Glass

Former WQNU/Louisville mornings
GatorGlass.53@gmail.com

•Todd Elbrink

Former Cox/Houston DOS
TElbrink@icloud.com

•Carly Quinn

Former WGH/Norfolk morning co-host
NewEnglandClamChowder2021@yahoo.com
757-617-8171

•Chuck Reeves

Former KTFW/Dallas & KTWF/Wichita Falls, TX
PD/afternoons
ChuckReeves33@yahoo.com

•Chuck "DZL" Thompson

Former WKKT/Charlotte PD
DZLradio@gmail.com
704-615-7095

•Jared Marlowe

Former WWOF/Tallahassee weekender
RadioJared@gmail.com

•Dan Gallo

Former KTHT/Houston morning co-host
DanJGallo@hotmail.com

•Chuck Akers

Former KTHT/Houston morning co-host
chuckakers@comcast.net

•Ryan Wild

Former WLHK/Indianapolis PD/middays
WildOnAir@aol.com
815-353-6101

•Stephanie Crist

Former KMDL/Lafayette, LA midday personality
StephanieCrist1956@gmail.com

•Kyle Murphy

Former KSNB-AM/Jamestown, ND
morning personality
KyleMurphyRadio@gmail.com

•Steph Peters

Former WWQM/Madison, WI
morning personality
StephPeters888@gmail.com

•Dan McKee

Former Summit/Knoxville GSM
DanMcKee01@gmail.com
865-405-8414

•Duane Shannon & Abby Summers

Former WGKX/Memphis morning team
DNAAcrossTheUSA@gmail.com

LW TW Artist/Title (Label)

Total Points +/- Points Total Plays +/- Plays Audience +/- Aud Stations ADDS

LW	TW	Artist/Title (Label)	Total Points	+/- Points	Total Plays	+/- Plays	Audience	+/- Aud	Stations	ADDS
3	1	KANE BROWN ✓ One Mississippi (RCA)	30673	3987	8527	1124	38.521	4.189	159	0
2	2	K. BALLERINI f/K. CHESNEY /Half Of My Hometown (Black River)	29284	1396	8062	353	37.846	1.789	159	0
1	3	MORGAN WALLEN /Sand In My Boots (Big Loud)	26854	-3922	7259	-1272	35.889	-3.763	158	0
4	4	PARKER MCCOLLUM /To Be Loved By You (MCA)	24628	766	6682	175	31.448	2.407	157	0
5	5	CODY JOHNSON /Til You Can't (Warner/CoJo/WMN) ✓	23399	2095	6563	615	27.89	1.395	158	0
6	6	SAM HUNT /23 (MCA) ✓	22929	1833	6370	560	26.329	2.67	157	0
7	7	E. KING & M. LAMBERT /Drunk ... (RCA/Columbia)	22519	1459	6361	451	24.511	1.842	154	1
8	8	ERIC CHURCH /Heart On Fire (EMI Nashville)	19873	950	5483	248	23.011	1.055	159	0
11	9	D. BENTLEY w/BRELAND & HARDY /Beers... (Atlantic/Big Loud/Capitol) ✓	18632	1585	5043	416	23.788	3.477	158	0
12	10	RUSSELL DICKERSON /Home Sweet (Triple Tigers)	17439	631	4823	201	21.614	0.669	158	0
13	11	C. PEARCE & A. MCBRYDE /Never Wanted... (Big Machine/WMN)	16644	577	4675	140	19.915	1.104	158	0
14	12	BLAKE SHELTON /Come Back As A Country Boy (Warner/WMN)	15324	247	4149	-8	18.101	0.224	159	0
15	13	C. SWINDELL & L. WILSON /Never Say Never (Warner/WMN/BBR)	15174	785	4098	284	17.067	0.581	158	0
17	14	LUKE COMBS /Doin' This (River House/Columbia) ✓	15006	1792	4222	529	18.071	2.115	156	0
16	15	HARDY /Give Heaven Some Hell (Big Loud)	13573	191	3734	29	16.126	0.029	157	0
18	16	KEITH URBAN /Wild Hearts (Capitol)	12463	671	3465	164	14.083	1.002	155	0
9	17	J. ALLEN & B. PAISLEY /Freedom Was A Highway (Stoney Creek)	12223	-6158	3377	-1654	17.822	-7.005	159	0
19	18	THOMAS RHETT /Slow Down Summer (Valory)	12154	479	3329	141	13.714	0.839	157	0
20	19	MIRANDA LAMBERT /If I Was A Cowboy (RCA)	11735	603	3303	165	12.353	0.964	156	0
21	20	JAKE OWEN /Best Thing Since Backroads (Big Loud)	11093	226	3125	97	11.647	0.697	157	0
22	21	LUKE BRYAN /Up (Capitol)	9978	602	2715	153	10.303	0.569	156	0
23	22	TIM MCGRAW /7500 OBO (Big Machine)	9634	480	2631	124	9.881	1.048	155	0
24	23	MAREN MORRIS /Circles Around This Town (Columbia)	8800	559	2379	213	8.911	0.646	154	0
26	24	WALKER HAYES /AA (Monument)	8713	1167	2436	312	8.216	0.829	147	5
25	25	JASON ALDEAN /Trouble With... (Macon Music/Broken Bow)	8552	549	2260	131	9.484	0.82	142	2

©2021 Country Aircheck™ All rights reserved. Sign up at countryaircheck.com • Send news to news@countryaircheck.com ✓=Top 5 Point Gainers



REACTING

Converting To Sub-Power **KILT Houston**

Added To **Spotify** New Boots

New Adds: **KCYY San Antonio**

WAMZ Louisville / WBCT Grand Rapids

WOGI Pittsburgh

As Seen At CRS On The **amazon Music**

Presents: **Country Heat**

COUNTRY'D LOOK GOOD ON YOU

LW	TW	Artist/Title (Label)	Total Points +/-	Points	Total Plays +/-	Plays	Audience +/-	Aud	Stations	ADDS
27	26	📶 DAN + SHAY /Steal My Love (Warner/WAR)	7496	278	2062	71	7.226	0.472	147	0
28	27	📶 SCOTTY MCCREERY /Damn Strait (Triple Tigers)	7449	933	2103	250	7.894	1.55	152	4
29	28	📶 ERNEST f/MORGAN WALLEN /Flower Shops (Big Loud)	7155	814	1990	241	8.903	1.295	142	7
30	29	TOBY KEITH /Old School (Show Dog)	5341	-269	1619	-65	3.497	-0.482	141	0
33	30	📶 DYLAN SCOTT /New Truck (Curb)	5083	163	1478	45	5.045	0.448	134	2
34	31	📶 PARMALEE /Take My Name (Stoney Creek)	5045	267	1415	71	5.092	1.024	113	7
32	32	📶 BROTHERS OSBORNE /I'm Not For Everyone (EMI Nashville)	5002	4	1437	2	4.496	0.049	140	0
31	33	FRANK RAY /Country'd Look Good On You (Stoney Creek)	4848	-305	1484	-59	3.063	-0.201	124	3
35	34	📶 C. YOUNG w/M. TENPENNY /At The End Of A Bar (RCA)	4417	200	1169	58	3.655	-0.098	127	3
37	35	📶 LEE BRICE /Soul (Curb)	4037	78	1090	29	3.57	0.26	115	3
36	36	TENILLE ARTS /Back Then, Right Now (19th & Grand)	4002	-21	1253	-2	2.149	-0.067	133	1
38	37	📶 JUSTIN MOORE /With A Woman You Love (Valory)	3804	61	1119	12	4.543	-0.099	94	2
39	38	📶 T. SWIFT f/C. STAPLETON /I Bet You Think About Me (Republic/MCA)	3511	109	1088	53	2.105	0.042	118	0
AIRBORNE		DUSTIN LYNCH /Party Mode (Broken Bow)	3457	617	861	169	2.75	0.164	98	7
40	40	CAROLINE JONES /Come In ... (Mailboat/New Revolution)	3192	-144	1012	-35	1.18	-0.232	94	1
41	41	MORGAN WADE /Wilder Days (Arista)	3053	-57	899	-18	1.53	-0.15	118	7
48	42	📶 KENNY CHESNEY /Everyone She Knows (Blue Chair/Warner/WEA)	3020	725	772	178	2.354	0.452	82	2
42	43	📶 CHRIS JANSON /Bye Mom (Warner/WAR)	2991	9	865	4	1.318	-0.042	103	1
45	44	📶 OLD DOMINION /No Hard Feelings (Arista)	2847	21	750	2	2.849	0.035	102	4
43	45	📶 MIDLAND /Sunrise Tells The Story (Big Machine)	2798	-52	774	3	1.932	-0.034	93	0
47	46	📶 CHASE RICE /If I Were Rock & Roll (Dack Janiels/Broken Bow)	2424	64	721	28	1.211	0.059	85	0
49	47	NIKO MOON /Paradise To Me (RCA)	2122	-168	663	-49	1.243	-0.132	67	0
50	48	📶 ZAC BROWN BAND /Out In... (Home Grown/Warner/WAR)	2039	111	572	24	1.597	0.089	74	3
Debut	49	📶 I. ANDRESS w/S. HUNT /Wishful Drinking (Atlantic/Warner/WEA)	1970	98	559	17	1.607	-0.056	50	5
Debut	50	📶 BRETT YOUNG /You Didn't (BMLGR)	1951	24	575	4	1.005	0.018	84	2

©2021 Country Aircheck™ All rights reserved. Sign up at countryaircheck.com • Send news to news@countryaircheck.com ✓=Top 5 Point Gainers



Give to Get Your Shirt

Donate Now



Country Aircheck Add Leaders

	Adds
KASSI ASHTON /Dates In Pickup Trucks (Interscope/MCA)	24
JACKSON DEAN /Don't Come Lookin' (Big Machine)	12
JON PARDI /Last Night Lonely (Capitol)	11
DUSTIN LYNCH /Party Mode (Broken Bow)	7
ERNEST f/MORGAN WALLEN /Flower Shops (Big Loud)	7
MORGAN WADE /Wildier Days (Arista)	7
PARMALEE /Take My Name (Stoney Creek)	7
ELI YOUNG BAND /Love Talking (Valory)	6
LADY A /What A Song Can Do (BMLGR)	6
MORGAN WALLEN /Wasted On You (Big Loud)	6
RYAN HURD /Pass It On (Arista)	6

Country Aircheck Top Point Gainers

KANE BROWN /One Mississippi (RCA)	3987 ✓
CODY JOHNSON /Til You Can't (Warner/CoJo/WMN)	2095 ✓
SAM HUNT /23 (MCA)	1833 ✓
LUKE COMBS /Doin' This (River House/Columbia)	1792 ✓
D. BENTLEY w/BRELAND & HARDY /Beers... (Atlantic/Big Loud/Capitol)	1585 ✓
E. KING & M. LAMBERT /Drunk ... (RCA/Columbia)	1459
K. BALLERINI f/K. CHESNEY /Half Of... (Black River)	1396
WALKER HAYES /AA (Monument)	1167
ERIC CHURCH /Heart On Fire (EMI Nashville)	950
SCOTTY MCCREERY /Damn Strait (Triple Tigers)	933

Country Aircheck Top Spin Gainers

KANE BROWN /One Mississippi (RCA)	1124
CODY JOHNSON /Til You Can't (Warner/CoJo/WMN)	615
SAM HUNT /23 (MCA)	560
LUKE COMBS /Doin' This (River House/Columbia)	529
E. KING & M. LAMBERT /Drunk ... (RCA/Columbia)	451
DIERKS BENTLEY, BRELAND, HARDY /Beers... (Atlantic/Big Loud/Capitol)	416
K. BALLERINI f/K. CHESNEY /Half Of... (Black River)	353
WALKER HAYES /AA (Monument)	312
C. SWINDELL & L. WILSON /Never Say Never (Warner/WMN/BBR)	284
SCOTTY MCCREERY /Damn Strait (Triple Tigers)	250

Activator Top Point Gainers

ERIC CHURCH /Heart On Fire (EMI Nashville)	737 ✓
CODY JOHNSON /Til You Can't (CoJo/Warner/WMN)	683 ✓
D. BENTLEY f/BRELAND & HARDY /Beers... (Atlantic/Big Loud/Capitol)	590 ✓
C. SWINDELL & L. WILSON /Never Say... (Warner/WMN/BBR)	578 ✓
ERNEST f/MORGAN WALLEN /Flower Shops (Big Loud)	552 ✓
SAM HUNT /23 (MCA)	470
SCOTTY MCCREERY /Damn Strait (Triple Tigers)	456
THOMAS RHETT /Slow Down Summer (Valory)	437
JASON ALDEAN /Trouble With... (Macon Music/Broken Bow)	369
E. KING & M. LAMBERT /Drunk (And I...) (RCA/Columbia)	360

Activator Top Spin Gainers

ERIC CHURCH /Heart On Fire (EMI Nashville)	150
CODY JOHNSON /Til You Can't (CoJo/Warner/WMN)	148
SAM HUNT /23 (MCA)	125
C. SWINDELL & L. WILSON /Never Say... (Warner/WMN/BBR)	120
ERNEST f/MORGAN WALLEN /Flower Shops (Big Loud)	118
SCOTTY MCCREERY /Damn Strait (Triple Tigers)	118
D. BENTLEY f/BRELAND & HARDY /Beers... (Atlantic/Big Loud/Capitol)	114
E. KING & M. LAMBERT /Drunk (And I...) (RCA/Columbia)	95
MAREN MORRIS /Circles Around This Town (Columbia)	82
THOMAS RHETT /Slow Down Summer (Valory)	74

Country Aircheck Top Recurrents

	Points
D. LYNCH f/M. PORTER /Thinking 'Bout You (Broken Bow)	20896
J. ALDEAN & C. UNDERWOOD /If I... (BMG/Broken Bow/Capitol)	20133
JORDAN DAVIS f/LUKE BRYAN /Buy Dirt (MCA)	19934
CHRIS STAPLETON /You Should Probably Leave (Mercury)	15249
WALKER HAYES /Fancy Like (Monument)	14031
LUKE COMBS /Cold As You (River House/Columbia)	13857
CHRIS YOUNG & KANE BROWN /Famous Friends (RCA)	12899
ZAC BROWN BAND /Same Boat (Home Grown/Warner/WAR)	10963
LUKE COMBS /Forever After All (River House/Columbia)	10730
CHASE RICE f/FGL /Drinkin'... (Dack Janiels/BBR/BMLGR)	9960

©2021 Country Aircheck™ All rights reserved. Sign up at countryaircheck.com • Send news to news@countryaircheck.com ✓=Top 5 Point Gainers

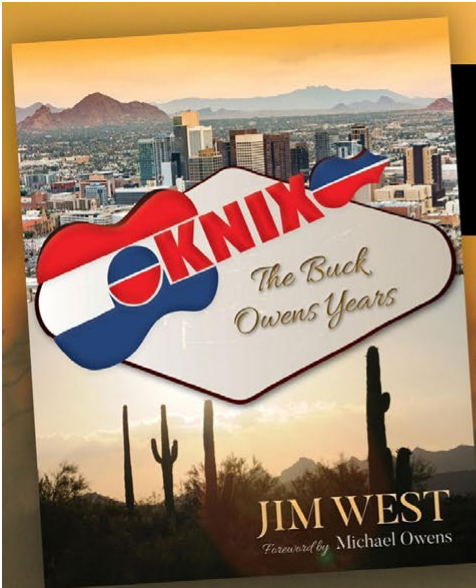
AVAILABLE NOW!

The New Feature Book
KNIX, The Buck Owens Years

KNIX, The Buck Owens Years spotlights a timeline history of this iconic country music radio station in Phoenix, Arizona. Country music Hall of Famer Buck Owens purchased the station in 1968 and owned it for nearly 31 years. The book features many historic photos and comments from former and current radio air talent with their thoughts and fond memories of working for America's Finest country radio station.

Available online at Amazon and other book retailers.

CLICK HERE TO PURCHASE



COUNTRY AIRCHECK ACTIVITY

MIDLAND/Sunrise Tells The Story (Big Machine)
 Moves 43-45*
 2798 points, 774 spins; No adds

CHASE RICE/If I Were Rock & Roll
 (Dack Janiels/Broken Bow)
 Moves 47-46*
 2424 points, 721 spins; No adds

NIKO MOON/Paradise To Me (RCA)
 Moves 49-47
 2122 points, 663 spins; No adds

ZAC BROWN BAND/Out In The Middle
 (Home Grown/Warner/WAR)
 Moves 50-48*
 2039 points, 572 spins
 3 adds: **WGH, WIL, WPAW**

INGRID ANDRESS f/SAM HUNT/Wishful Drinking (Warner/WEA)
 Debuts 49*
 1970 points, 559 spins
 5 adds: **KCYE, KCYY, WAVW, WUSN, WXTU**

BRETT YOUNG/You Didn't (BMLGR)
 Debuts 50*
 1951 points, 575 spins
 2 adds: **WAVW, WCYQ***

CONNER SMITH/Learn From It (Valory)
 1795 points, 533 spins
 1 add: **WSIX**

MITCHELL TENPENNY/Truth About You (Riser House/Columbia)
 1772 points, 526 spins
 2 adds: **WBEE, WMAD**

JON PARDI/Last Night Lonely (Capitol)
 1758 points, 442 spins
 11 adds, including: **KATM*, KDRK, KJKE, KKBQ, KWJJ, WGTY, WKRO, WNCY, WOGK, WUSN**

ADD DATES

Send yours to adds@countryaircheck.com


MARCH 7
ERIN KINSEY/Just Drive (Records)
MICHAEL RAY/Holy Water (Warner/WEA)
MORGAN WALLEN/Wasted On You (Big Loud)

MARCH 14
 None Listed

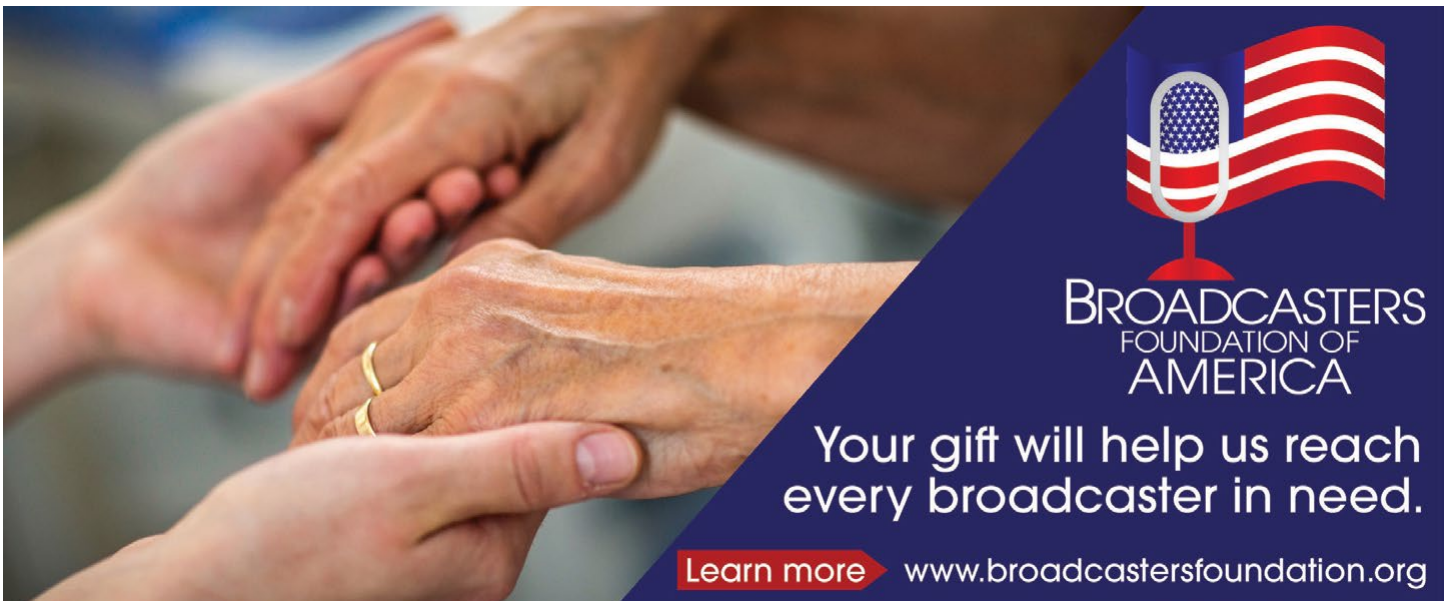
MARCH 21
ADAM DOLEAC/Drinkin' It Wrong (Arista)

CHECK OUT

MARCH 4
Dolly Parton Run, Rose, Run (Butterfly/Ingrooves/UMG)
 The Richard Dennison and Tom Rutledge-produced album is the companion project to an original novel, Run, Rose, Run, co-authored by James Patterson and Parton.



©2021 Country Aircheck™ — All rights reserved. Sign up free at www.countryaircheck.com. Send news to news@countryaircheck.com



BROADCASTERS FOUNDATION OF AMERICA

Your gift will help us reach every broadcaster in need.

Learn more www.broadcasterfoundation.org

LW	TW	Artist/Title (Label)	Points	+/- Points	Plays	+/- Plays	Stations	ADDS
1	1	MORGAN WALLEN Sand In My Boots (Big Loud) <small>4th Week at No. 1</small>	10857	-568	2107	-139	46	0
4	2	CODY JOHNSON /'Til You Can't (CoJo/Warner/WMN) ✓	10250	683	2022	148	48	0
3	3	KELSEA BALLERINI f/KENNY CHESNEY /Half Of My Hometown (Black River)	10130	188	2035	12	46	0
2	4	KANE BROWN /One Mississippi (RCA)	10073	-386	2035	-55	45	0
5	5	PARKER MCCOLLUM /To Be Loved By You (MCA)	9481	184	1889	35	47	0
Re-Enter	6	ERIC CHURCH /Heart On Fire (EMI Nashville) ✓	8903	737	1773	150	48	0
6	7	SAM HUNT /23 (MCA)	7946	470	1571	125	48	1
7	8	E. KING & M. LAMBERT /Drunk (And I Don't Wanna Go Home) (RCA/Columbia)	7575	360	1464	95	44	0
8	9	C. PEARCE & A. MCBRYDE /Never Wanted To Be That Girl (Big Machine/WMN)	7240	148	1458	30	47	0
10	10	D. BENTLEY f/BRELAND & HARDY /Beers On Me (Atlantic/Big Loud/Capitol) ✓	7230	590	1427	114	48	0
9	11	BLAKE SHELTON /Come Back As A Country Boy (Warner/WMN)	6990	220	1346	35	46	0
11	12	LUKE COMBS /Doin' This (River House/Columbia)	6925	305	1329	59	46	0
13	13	COLE SWINDELL & LAINEY WILSON /Never Say Never (Warner/WMN/BBR) ✓	6253	578	1220	120	47	0
14	14	MIRANDA LAMBERT /If I Was A Cowboy (RCA)	5567	-61	1086	-4	46	0
15	15	LUKE BRYAN /Up (Capitol)	5322	-174	1009	-13	47	0
16	16	JAKE OWEN /Best Thing Since Backroads (Big Loud)	5259	52	983	9	47	0
17	17	KEITH URBAN /Wild Hearts (Capitol)	5193	3	1020	5	46	0
18	18	RUSSELL DICKERSON /Home Sweet (Triple Tigers)	5176	249	1068	58	41	0
19	19	HARDY /Give Heaven Some Hell (Big Loud)	4708	-143	957	-25	45	0
12	20	JIMMIE ALLEN & BRAD PAISLEY /Freedom Was A Highway (Stoney Creek)	4517	-1184	918	-254	43	0
20	21	THOMAS RHETT /Slow Down Summer (Valory)	4489	437	884	74	47	0
21	22	TIM MCGRAW /7500 OBO (Big Machine)	3958	305	823	50	41	1
23	23	JASON ALDEAN /Trouble With A Heartbreak (Macon Music/Broken Bow)	3571	369	664	65	46	2
22	24	MAREN MORRIS /Circles Around This Town (Columbia)	3537	330	682	82	46	1
24	25	WALKER HAYES /AA (Monument)	3325	351	635	74	47	3
25	26	ERNEST f/MORGAN WALLEN /Flower Shops (Big Loud) ✓	3306	552	653	118	48	8
26	27	SCOTTY MCCREERY /Damn Strait (Triple Tigers)	3048	456	581	118	44	2
27	28	DAN + SHAY /Steal My Love (Warner/WAR)	2164	15	441	2	41	0
29	29	CHRIS YOUNG f/MITCHELL TENPENNY /At The End Of A Bar (RCA)	1799	9	316	7	37	0
30	30	JUSTIN MOORE /With A Woman You Love (Valory)	1690	198	336	33	27	1

©2021 Country Aircheck™ All rights reserved. Sign up at countryaircheck.com • Send news to news@countryaircheck.com ✓=Top 5 Point Gainers

COVID-19 & TORNADO

RELIEF RESOURCES

AVAILABLE NOW

WWW.MUSICHEALTHALLIANCE.COM

LW	TW	Artist/Title (Label)	Points	+/-	Points	Plays	+/-	Plays	Stations	Adds
28	31	TOBY KEITH /Old School (Show Dog)	1647	-255	339	-38	37	0		
32	32	DYLAN SCOTT /New Truck (Curb)	1526	135	303	25	36	1		
31	33	OLD DOMINION /No Hard Feelings (Arista)	1479	20	250	-9	23	0		
35	34	KENNY CHESNEY /Everyone She Knows (Blue Chair/Warner/WEA)	1376	287	244	49	21	2		
33	35	BROTHERS OSBORNE /I'm Not For Everyone (EMI Nashville)	1210	-118	262	-16	36	0		
34	36	FRANK RAY /Country'd Look Good On You (Stoney Creek)	1208	-17	275	-5	28	0		
37	37	CHRIS JANSON /Bye Mom (Warner/WAR)	1114	38	217	6	25	0		
38	38	PARMALEE /Take My Name (Stoney Creek)	1094	89	204	22	30	0		
40	39	GABBY BARRETT /Pick Me Up (Warner/WAR)	996	148	133	26	7	1		
39	40	TENILLE ARTS /Back Then, Right Now (19th & Grand)	940	36	201	2	28	0		
42	41	LEE BRICE /Soul (Curb)	819	44	163	5	26	0		
41	42	MORGAN WADE /Wilder Days (Arista)	814	-13	181	-7	26	0		
47	43	MIDLAND /Sunrise Tells The Story (Big Machine)	704	94	143	20	19	0		
45	44	ASHLEY COOKE /Never Til Now (Ashley Cooke/Back Blocks)	690	40	69	4	1	0		
Re-Enter	45	CHASE RICE /If I Were Rock & Roll (Dack Janiels/Broken Bow)	664	82	118	14	9	0		
43	46	CODY JINKS /Like A Hurricane (Late August)	655	-45	126	-10	12	0		
46	47	RUTHIE COLLINS /Hypocrite (Sidewalk/Curb)	649	9	123	2	16	0		
44	48	CONNER SMITH /Learn From It (Valory)	635	-41	84	-7	10	0		
49	49	BRETT YOUNG /You Didn't (BMLGR)	593	53	96	13	5	0		
Re-Enter	50	DUSTIN LYNCH /Party Mode (Broken Bow)	554	280	116	54	24	5		
52	51	ZAC BROWN BAND /Out In The Middle (Home Grown/Warner/WAR)	546	66	94	10	10	1		
48	52	MUSCADINE BLOODLINE /Dyin' For A Livin' (Stancaster)	511	-47	103	-11	9	0		
51	53	TIFFANY WOYS /About Love (---)	507	19	98	3	9	0		
54	54	SMITH & WESLEY /Let Me Know (Dream Walkin')	478	8	95	1	7	0		
56	55	SPENCER CRANDALL /Made (---)	470	10	47	1	1	0		
Debut	56	ELI YOUNG BAND /Love Talking (Valory)	466	195	62	25	5	1		
58	57	KAMERON MARLOWE /Steady Heart (Columbia)	460	40	46	4	1	0		
55	58	AVERY ANNA /Narcissist (Warner)	460	-10	46	-1	1	0		
57	59	WALKER HAYES /U Gurl (Monument)	440	10	44	1	1	0		
53	60	RANDALL KING /Record High (Warner/WMN)	424	-47	88	-15	9	0		

©2021 Country Aircheck™ All rights reserved. Sign up at countryaircheck.com • Send news to news@countryaircheck.com ✓=Top 5 Point Gainers



Give to Get Your Shirt

Donate Now

