

# COUNTRY AIRCHECK

WEEKLY

December 6, 2021, Issue 785

## Lessons Of The Manning Cast

The **ESPN 2 Monday Night Football With Peyton & Eli** – alternately known as *The Manning Cast* – has been consistently growing ratings since it debuted the first week of the NFL season.



Peyton Manning (l) and Eli Manning

After opening with 800,000 viewers, the Oct. 25 edition boasted 1.6 million viewers according to *The Hollywood Reporter*. But while the elder Manning majored in Speech Communications at the University of Tennessee

(Go Vols!) and the younger earned a degree in Marketing from the University of Mississippi, neither has a broad background in broadcasting to bring to the show. But radio pros say there may still be lessons to be learned for on-air personalities.



Steve Reynolds

Peyton and Eli both do most of what broadcasters have been trained not to do, including talking over one another and overusing crutches including “right,” “uhm” and “like.” And they have detectable accents and stutters. But what they also have is a uniquely inside perspective on the game, genuine relationships with the players and other guests joining them each week, strong personalities, sibling banter and a highly researched, well-produced show. As **The Reynolds Group** talent coach **Steve Reynolds** asserts, “Unpolished is the new polished. One thing I endeavor to do with every show I work with is having a long list of things that fit our brand that only our brand offers the marketplace.” During a typical



Tim Roberts

three-hour broadcast, the Mannings welcome a half-dozen guests, including current and former NFL players, (continued on page 8)



**Bringin' Sixty Back:** *Curb's* **Lee Brice** and actor/singer **Kiefer Sutherland** perform at Beasley Media Group's 60th anniversary and 4th Annual Holiday Soiree. Pictured (l-r) are **Bruce Beasley, Marie Tedesco, Sutherland, Caroline Beasley, Brice, Brad Beasley, Justin Chase** and **John Reynolds**.

## Beginning To Sound A Lot Like...

Those looking to freshen up holiday playlists have no shortage of options this year. Full Christmas albums from **Brett Eldredge, Cody Johnson, the Pistol Annies, Josh Turner** and **Brett Young** cover the spectrum from traditional favorites to aspiring future classics. **Dan + Shay** have released two holiday tracks this year to add to the two they released last year, though there are no plans at this point for a full Christmas collection from the duo. And new voices including **Lainey**



©2021 Country Aircheck™ — All rights reserved. Sign up free at [www.countryaircheck.com](http://www.countryaircheck.com). Send news to [news@countryaircheck.com](mailto:news@countryaircheck.com)

# KEITH URBAN

Just getting started and already Top 20 bound!

**CA/MB 24\***  
**BB/BDS 25\***

**SPEED OF NOW WORLD TOUR 2022** just announced for 47 U.S. cities. Get a load of Keith's official video announcement. [CLICK HERE NOW!](#)

On 162 great Country CA/MB BB/BDS reporting stations!

Early Research: #11  
12+ Overall Rate The Music

**CONVERT NOW!**

DAN + SHAY

# STEAL MY LOVE



**OVER 33 MILLION ON-DEMAND STREAMS TO DATE  
TOP 5 MOST ADDED THIS WEEK / ON OVER 140 STATIONS  
3 SPOT CHART JUMP ON THE COUNTRY AIRCHECK CHART**



**#6 ALL-GENRE MEDIABASE HOLIDAY CHART  
ADD TO YOUR CHRISTMAS PLAYLIST NOW!  
WATCH THE OFFICIAL VIDEO [HERE](#)**



**TONIGHT  
12/6**

**WATCH THE TV DEBUT OF "OFFICIALLY CHRISTMAS"  
ON THE TONIGHT SHOW STARRING JIMMY FALLON**



WARNER  
MUSIC  
NASHVILLE

VAR

**Wilson** are also in the festive spirit, as her version of **George Strait's** "Christmas Cookies" is already one of the most-played new releases this year. In addition to the Christmas airplay charts (see page 10 and 11), here are the other new titles receiving spins on Mediabase monitored stations:

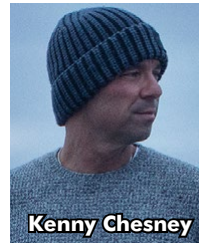
- JIMMIE ALLEN**/What Does Christmas Mean (Stoney Creek)
- INGRID ANDRESS**/Christmas Always Finds Me (Warner/WEA)
- TENILLE ARTS**/A Winter Wonderland (19th & Grand)
- RODNEY ATKINS & ROSE FALCON**/Winter Wonderland (Curb)
- GABBY BARRETT**/Silent Night (Warner/WAR)
- GABBY BARRETT & CARLY PEARCE**/Sleigh Ride  
(Live From CMA Country Christmas) (Warner/WAR/Big Machine)
- BRELAND**/The Christmas Song (Atlantic)
- DAN + SHAY**/Officially Christmas (Warner/WAR)
- DAN + SHAY**/Pick Out A Christmas Tree (Warner/WAR)
- TIM DUGGER**/Christmas In Dixie (MCC/Curb)
- BRETT ELDREDGE**, *Mr. Christmas* (Warner/WMN)  
Receiving Airplay: It's The Most Wonderful Time Of The Year, Jingle Bells, Merry Christmas Baby, Mr. Christmas, Rudolph The Red-Nosed Reindeer, Santa Claus Is Comin' To Town
- LINDSAY ELL**/It's Beginning To Look A Lot Like Christmas (Stoney Creek)
- AARON GOODVIN**/Jingle Bell Rock (Reviver/Legacy)
- HALEY & MICHAELS**/I Wish You Love This Christmas (H&M)
- LAINE HARDY**/Please Come Home For Christmas (Buena Vista/19 Recordings)
- LUCAS HOGE**/I'll Be Home For Christmas (Forge Entertainment)
- CODY JOHNSON**, *A Cody Johnson Christmas* (CoJo/Warner/WMN)  
Receiving airplay: Christmas All Year Long, Hat Made Of Mistletoe, I'll Be Home For Christmas, If We Make It Through December, Pretty Paper, Santa Claus Is Back In Town
- RAYNE JOHNSON**/Bring Me A Country Girl (Mountain Road/Verge)
- JOSH ABBOTT BAND**/Santa Better Knock (Pretty Damn Tough)
- TIM MCGRAW**/Christmas All Over The World (2021) (Big Machine)
- LORI MCKENNA**/Christmas Without Crying (Creative Nation/Thirty Tigers)
- CHRISSY METZ**/I'll Be Home For Christmas (EMI Nashville)
- IAN MUNSICK**/You're A Mean One Mr. Grinch (Warner/WEA)
- DOLLY PARTON**/Christmas Where Are We (Butterfly/12Tone)
- CARLY PEARCE**/Mary, Did You Know (Big Machine)
- CARLY PEARCE**/O Holy Night

- (Live From CMA Country Christmas) (Big Machine)
- PISTOL ANNIES**, *Hell Of A Holiday* (RCA)  
Receiving airplay: Come On Christmas Time, Hell Of A Holiday, Sleigh Ride, Snow Globe
- JOHN RICH & MICHAEL ROWE**/Santa's Got A Dirty Job (Rich Records)
- MITCHELL TENPENNY**/Neon Christmas (Riser House/Columbia)
- MITCHELL TENPENNY w/M. PATRICK**/I Hope It Snows (Riser House/Columbia)
- TIGIRLILY**/Where Are You Christmas? (Monument)
- JOSH TURNER**, *King Size Manger* (MCA)  
Receiving airplay: Angels We Have Heard On High, Have Yourself A Merry Little Christmas, King Size Manger, Santa Claus Is Comin' To Town, Soldier's Gift
- LAINIE WILSON**/Christmas Cookies (Broken Bow)
- BRETT YOUNG**, *Brett Young & Friends Sing The Christmas Classics* (BMLGR)  
Receiving airplay: Let It Snow! Let It Snow! Let It Snow!, Rockin' Around The Christmas Tree

-Chris Huff

## Chart Chat

Congratulations to **Kenny Chesney**, **Kristen Williams**, **Tom Martens**, **Shari Roth** and the **Blue Chair/Warner/WEA** promotion team on landing at No. 1 this week with "Knowing You." The song becomes Chesney's 34th career chart-topper 25 years to the week since the song that became his first No. 1 ("When I Close My Eyes") was first shipped to radio. Songwriters are **Adam James**, **Brett James** and **Kat Higgins**.



Kenny Chesney

Kudos to **Luke Jensen** and the **Monument** team on scoring 48 adds for "AA" by **Walker Hayes**. Coming just four weeks after his first No. 1 song, it is another career first for Hayes, who has never led the CA/MB Add Board. This is also the first time the Monument imprint has led the Add Board in more than 19 years, the last time occurring in September 2002 when **The Chicks'** cover of "Landslide" led for two consecutive weeks.

## News & Notes

**Circle Network** is partnering with the **United Services Organizations (USO)** to broadcast the first-ever *Opry Live: USO Holiday Special* Dec. 18 at 9pm ET. The one-hour broadcast is

©2021 Country Aircheck™ — All rights reserved. Sign up free at [www.countryaircheck.com](http://www.countryaircheck.com). Send news to [news@countryaircheck.com](mailto:news@countryaircheck.com)

**OLD DOMINION**

**NO HARD FEELINGS**

**IMPACTING 12.13**

**LISTEN HERE**

# hypocrite

THE NEW SINGLE FROM  
**RUTHIE COLLINS**



28 EARLY ADDS IN ALREADY!  
ADDED AT ((SiriusXM)) VELVET CHANNEL

[LISTEN NOW](#)

CRAIG POWERS - VP, MEDIA CURB | WORD ENTERTAINMENT - CPOWERS@CURB.COM



**OFF THE RECORD**

An Off The Record conversation with Audacy **WUSY/Chattanooga** afternoon personality **Greg "StyckMan" Owen:**

**I'm from Middle Tennessee**, so growing up, my go-to station was Top 40 WYHY/ Nashville – "The Outrageous FM, Y107." I remember sitting in my mom's car on Friday afternoon getting amped up on the 5 O'Clock Whistle, and if the call time for my high school band was 5pm, I was almost always late. That station was magic to me.

**I wanted to be Coyote McCloud!** In fact, some of the *Gator & StyckMan* morning show was modeled after *Coyote's Zoo Crew*, and I was thankful to tell Coyote what an influence he'd been to me. (Watch [here](#).)

**In high school, my best friend** got a job at WJLE/Smithville, TN, and he'd let me segue the records before he talked. I got hooked! When he got a job at WSMT/Sparta, TN, I made friends at the station and started begging for a job. My monster mullet and dangling earring self finally landed a full-time job doing overnights on a Classic Rock station and weekends for a Classic Country/Southern Gospel station.

**There is no StyckMan without** Gator Harrison, and when we launched our show in Cookeville, TN, my career took off. Though it was short-lived, the *StyckMan & Mary Mac* show that came into existence when Gator left for Chattanooga was pivotal to me, both personally and professionally, and I miss Mary Mac so much. She passed away in April but had such a positive impact on so many people. Working with [current co-host Melissa] "Mo" [Wagner] is so much fun..., and our time together feels effortless. Justin Cole believed in us from the very beginning and is a constant encourager.

**When Hardy's "Redneck" came out**, I fell in love; it played so well with my redneck character on the radio! I'm also loving Gabby Barrett and Ingrid Andress, and anything Luke Combs touches turns to gold!

**Mo got me hooked on** *The Crown*, but my wife and I are still into episodic television, so we watch the 911 franchise and *New Amsterdam*. I also love shows like *America's Got Talent* and *Game Of Talents*.

**My top five most influential** artists, songs, albums or concerts are:

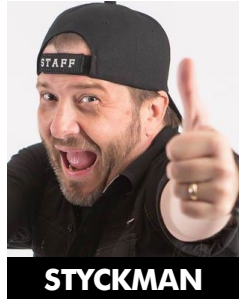
**Garth Brooks.** He's the best in the business and as humble as they come. I've only met him once, but he was so shy and humble as I explained how blown away I was by his show. I think that's the perfect way to handle your craft ... do the best you can do to blow people away, but don't get too big for your britches.

**Concerts in general.** I love big production value, and a great show from an artist makes them stand out among the rest. I can draw some parallels to radio with how great production, imaging and personalities can elevate a brand.

**Purple Rain.** My mother took me to see the movie, and I still remember her sliding down in her seat in embarrassment. I still love that album!

**Big hair and spandex.** While I was never "in" a "hair band," I was associated with several in my youth. I loved Mötley Crüe, Guns N' Roses and Whitesnake.

**Marching band.** Nerdy, I know, but I would not have graduated high school or be the person I am today had it not been for my high school band. The band taught me how to win and be humble, how to lose and still hold my head high, how to work in a group environment and how to lead and be led. Reach StyckMan [here](#).



hosted by **Kellie Pickler** and features **Lauren Alaina, Luke Combs, Jessie James Decker, Craig Morgan, Josh Turner, Carrie Underwood** and **The War & Treaty**.

Nashville-based nonprofit **CreatiVets** – known for helping combat veterans learn to use music and art as a form of therapy – has installed an art exhibit title *From War To Words: A Visual Portrait Series* By Jason Myers at the San Antonio International Airport.

Best-selling author, psychotherapist and grief advocate **Megan Devine** has joined **Premiere Networks** and **Amy Brown's The Amy Brown Podcast Network** and will offer her weekly *Here After With Megan Devine* podcast. Listen [here](#).

Capitol's **Mickey Guyton** will be featured in **Cracker Barrel's Sounds Of The Season: Together Again** 30-minute holiday feature beginning Dec. 15. The special will stream on Cracker Barrel's [YouTube](#) and [Facebook](#) channels.

**Cassadee Pope** has partnered with **Vans** to raffle off four one-of-a-kind shoe designs to benefit the self-care non-profit **To Write Love On Her Arms**. Details [here](#).

**Tyler Rich** partnered with **LoanDepot** to donate \$25,000 to two Los Angeles-area animal shelters in support of their no-kill initiative. Details [here](#).

**Marvel Comics** artist **Yonami** is releasing "Female Force: **Dolly Parton** – Bonus Holiday Edition," a 30 page graphic novel available digitally and in print. Details [here](#).

Celebrity guest booking service **Radio Guest Quest** is moving its affiliate and advertising sales operations to **G Accelerate Networks**. For more information on becoming an affiliate, contact **Rich O'Brien** [here](#).

Steel City **KBEQ/Kansas City** PD **Todd Nixon** has been appointed to the State of Missouri's **Amber Alert System Oversight Committee**.

**The Week's Top Stories**

Full coverage at [countryaircheck.com](http://countryaircheck.com).

- The **Silverfish Media** team and *CMT After MidNite's* **Cody Alan** were profiled in last week's (11/29) *Country Aircheck Weekly*.
- **Bob Barnett** [joined](#) **Townsquare/Buffalo** as Dir./Content & Country **WYRK** Brand Mgr. (CAT 12/3)
- **Patrick Scott** [was named](#) **WNNF/Cincinnati** PD/afternoon host. (CAT 12/2)
- **Tim Murphy** [joined](#) **Cumulus/Pensacola** as OM & **WXBM** PD. (CAT 12/1)
- **WZZK/Birmingham** PD/afternoon personality **Lance Tidwell** [is leaving](#) radio. (CAT 11/30)


©2021 Country Aircheck™ — All rights reserved. Sign up free at [www.countryaircheck.com](http://www.countryaircheck.com). Send news to [news@countryaircheck.com](mailto:news@countryaircheck.com)

BRETT YOUNG  
& FRIENDS  
SING THE *Christmas* CLASSICS

NEW HOLIDAY ALBUM \* AVAILABLE NOW!



DON'T MISS

  
**CROSS  
ROADS  
CHRISTMAS**

WEDNESDAY  
DECEMBER 8<sup>TH</sup>  
8/7C

THANK YOU TO ALL THE BELIEVERS!





# LACI KAYE BOOTH *SHUFFLE*

59 BELIEVERS ALREADY ON BOARD!



*Thank you to all the believers!*





**Squint Media:** River House/Columbia’s **Luke Combs** celebrates platinum certifications for *What You See Is What You Get* (3X), *This One’s For You* (4X) and five singles. Pictured (l-r) are the labels **Caryl Atwood**, **Dennis Kooker**, **Jennifer Fowler**, **Darren Stupak**, **Kevin Kelleher**, **Jennifer Way** and **Randy Goodman**, Combs, Make Wake Artists’ **Chris Kappy** and **Sophia Sansone**, the label’s **Lyndsay Church**, River House’s **Lynn Oliver-Cline**, the label’s **Liz Cost** and RHA’s **Zebb Luster**.

- **Jeremy “Otis” Maher** *rejoined* **WUBL/Atlanta** as MD/afternoon personality, replacing **Lance Houston**, who is transitioning to an off-air role. Additionally, morning co-host **Spencer Graves** exited. (CAT 11/29)
- **Chronicle:** Tommy Spurlock, Tom Wayne, Randy Jones.

### Lessons Of *The Manning Cast*

(continued from page 1)

actors, musicians and comedians. In addition to discussions surrounding play calling in the current game, the Mannings intersperse questions about their guests’ careers and personal lives

©2021 Country Aircheck™ — All rights reserved. Sign up free at [www.countryaircheck.com](http://www.countryaircheck.com). Send news to [news@countryaircheck.com](mailto:news@countryaircheck.com)

**#4 MOST ADDED**  
**#4 GAINER**

**SOUL** LEE BRICE

**#2 MOST ADDED**  
 UP 3 SPOTS TO #37 CA/MB #38 BB/BDS

**DYLAN SCOTT**  
**NEW TRUCK**



**CURB**  
radio.com  
curb.com



# WALKERHAYES

NEW "AA"  
SINGLE

**61** FIRST  
WEEK  
STATIONS  
**#1 MOST ADDED**

**THANK YOU COUNTRY RADIO!**

WHKO | KBEQ | WTHT | WIRK | WSIX | WPGB | WJVC | WKRO  
WKMK | WBWL | WTQR | KJUG | WGAR | WQMX | WGNE  
WKSJ | KRTY | WXBQ | WSSL | KMLE | KYGO | KFRG | KTTS  
WQNU | WOGK | KFDI | KXLY | WRNS | WKHK | WZZK | WNCY  
WCYQ | KUBL | WKXC | WQHK | KKBQ | WYCD | WKIS | WUSN  
WUSJ | WIL | KCCY | KPLM | WUSY | WQYK | WUBL | WWKA  
KDRK | KJKE | KWNR | WDAF | KEEY | WKHX | MCCN | KSOP  
KWJJ | WCKN | WDSY | WOGI | WPAW | WWQM

**CRS** '22 NEW FACES OF COUNTRY MUSIC®



**MONUMENT**

# Christmas Chart

Source: Mediabase

ALL TITLES

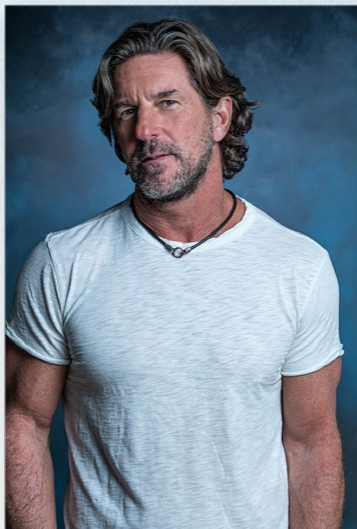
LW	TW	Artist/Title	Points	+/- Points	Plays	+/- Plays
7	1	TAYLOR SWIFT/Last Christmas	920	559	218	132
4	2	BOBBY HELMS/Jingle Bell Rock	856	303	185	46
12	3	BURL IVES/Have A Holly Jolly Christmas	785	491	154	93
10	4	LUKE BRYAN/Run Run Rudolph	762	432	176	98
1	5	JOSE FELICIANO/Feliz Navidad	741	171	154	1
--	6	ELVIS PRESLEY/Blue Christmas	668	509	154	114
2	7	BRENDA LEE/Rockin' Around The Christmas Tree	647	84	124	-19
3	8	GARTH BROOKS/It's The Most Wonderful Time Of The Year	611	53	127	-12
11	9	ALAN JACKSON/A Holly Jolly Christmas	608	305	157	77
19	10	BRAD PAISLEY/Santa Looked A Lot Like Daddy	593	346	147	81
6	11	VINCE VANCE & THE VALIANTS/All I Want For Christmas Is You	578	200	130	39
--	12	GENE AUTRY/Rudolph The Red-Nosed Reindeer	546	311	109	63
--	13	BLAKE SHELTON f/MIRANDA LAMBERT/Jingle Bell Rock	515	304	100	58
--	14	DARIUS RUCKER/Winter Wonderland	489	348	145	103
--	15	NAT KING COLE/The Christmas Song	482	368	102	85
16	16	GEORGE STRAIT/Christmas Cookies	479	196	116	46
13	17	RASCAL FLATTS/Jingle Bell Rock	467	174	98	29
--	18	MARIAH CAREY/All I Want For Christmas Is You	462	409	108	100
--	19	B. ELDRIDGE f/M. TRAINOR/Baby, It's Cold Outside	450	284	82	50
9	20	ALAN JACKSON/I Only Want You For Christmas	438	102	112	26

and utilize split screens to display career highlight clips, photos and screen shots from social media.

"What's great about *The Manning Cast* is that, in reality, it's a radio show on television," says **Audacy** VP/Country Format Captain **Tim Roberts**. "It incorporates everything a great radio show has – humor, interesting topics, fun guests and surprises." During the broadcast featuring Eli's former team, the New York Giants, the youngest Manning brother noted he and older brother Peyton communicate all week long via iPhone voice memos swapping notes about each team's offensive and defensive schemes. Peyton, a noted student and historian of the game, continues to watch game footage leading up to each broadcast and has admittedly sent "more than an hour-and-a-half" of voice memos to Eli in a given day while preparing. The Mannings' willingness to dissect the game in such detail engages even the most scholarly fans while educating a more casual viewer. The brothers are also timely and topical, bringing up current holidays – including sharing photos of family Halloween costumes – and taking on viral trends and Tik Tok dances during the live broadcast. They are seemingly unafraid of embarrassing themselves or each other. "It's people hanging out, talking about real things, and oh ... by the way ... there's a football game on," states Roberts.

The duo is also unapologetic about their fandoms and allegiances. "They're doing exactly what I'm doing, and it's so relatable and different that it stands out," remarks Reynolds. "I reward innovation, taking chances and being different, and this ticks all three boxes." Yes, they have favorite teams and even favorite players. They have heroes, and they have rivals. And, as much as both Peyton and Eli are celebrities and pop culture icons in their own right, they play the roles of sincerely interested friends and fans when welcoming even the newest of NFL rookies to the stage. In fact, Peyton took the opportunity to let Buffalo Bills quarterback Josh Allen know that he is Peyton's son Marshall's favorite player as

©2021 Country Aircheck™ — All rights reserved. Sign up free at [www.countryaircheck.com](http://www.countryaircheck.com). Send news to [news@countryaircheck.com](mailto:news@countryaircheck.com)



CONGRATULATIONS  
BRETT JAMES!

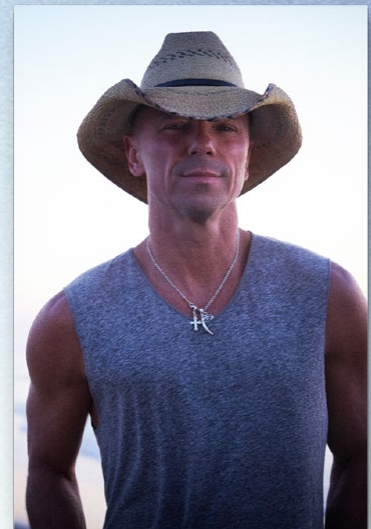
#1 SONG

"KNOWING YOU"

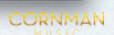
RECORDED BY KENNY CHESNEY

CO-WRITTEN BY KAT HIGGINS & ADAM JAMES

PRODUCED BY BUDDY CANNON & KENNY CHESNEY



THANK YOU WARNER MUSIC NASHVILLE & MORRIS HIGHAM!



# Christmas Chart

Source: Mediabase

## CURRENTS/RECURRENTS

LW	TW	Artist/Title	Points	+/- Points	Plays	+/- Plays
1	1	THOMAS RHETT/Christmas In The Country	299	122	64	29
--	2	LADY A/Christmas Through Your Eyes	276	229	71	59
2	3	DAN + SHAY/Take Me Home For Christmas	273	120	82	42
9	4	LAINIE WILSON/Christmas Cookies	261	192	68	54
4	5	FLORIDA GEORGIA LINE/Lit This Year	245	129	63	34
--	6	KEITH URBAN/I'll Be Your Santa Tonight	205	120	38	24
--	7	CARLY PEARCE/O Holy Night	202	202	55	55
5t	8	PISTOL ANNIES/Snow Globe	201	113	58	40
--	9	GABBY BARRETT/Silent Night	195	175	54	50
7	10	DAN + SHAY/Officially Christmas	194	110	37	22

he lavished praise upon Allen for not only his gameplay but his sincerity in interacting with fans. Reynold observes, "The Manning Cast fits the ESPN brand; Peyton and Eli and the friends they bring into the broadcast are very well-known, and it's stacked to work in their favor and attract an audience that has a constant need for something fresh."

While the commentary is not highly polished or delivered the way a well-trained broadcaster might, the Mannings have earned praise from viewers for being engaging, entertaining and informative. In an age of podcasting, Twitch, TikTok, live online broadcasts and social media influencers, Reynolds reminds, "Personalities drive interest. Yes, the games tell a story via stats, but it's the personalities who make a story come to life. And, as an added bonus, this allows us to get to know another side of these personalities we already know and a chance to see their humor, humanity and ourselves in them." In a release from the network, ESPN Pres./Programming & Original Content **Burke Magnus** says *The Manning Cast* has "deepened our already strong connection with the NFL fan" by "showing people and personalities in a new, unpredictable, authentic and fun environment." Though *The Manning Cast* currently only accounts for just under 13%

of the total *Monday Night Football* viewership, the exponential growth in the first half of the season bodes well for its future as the ESPN family of networks seems prepared to place their chips on connection outweighing perfection.

"It's a game changer when it comes to television broadcasts, and although there are plenty of things to work on, it definitely has real appeal to sports fans as well as the casual viewer," notes Roberts. Concludes Reynolds, "My takeaways are simple: be different, identify and groom your major players and get them to be additive to your radio station to show a different side of your diamond. Take strategic chances to get noticed ... or suffer that you could be perceived as static and predictable and become vulnerable to attack if someone else does."

Reach Reynolds [here](#) and Roberts [here](#). -Monta Vaden

**Lon Helton**, [lon@countryaircheck.com](mailto:lon@countryaircheck.com)  
**Chuck Aly**, [chuck@countryaircheck.com](mailto:chuck@countryaircheck.com)  
**Caitlin DeForest**, [caitlin@countryaircheck.com](mailto:caitlin@countryaircheck.com)  
**Monta Vaden**, [monta@countryaircheck.com](mailto:monta@countryaircheck.com)  
**Chris Huff**, [chris@countryaircheck.com](mailto:chris@countryaircheck.com)

©2021 Country Aircheck™ — All rights reserved. Sign up free at [www.countryaircheck.com](http://www.countryaircheck.com). Send news to [news@countryaircheck.com](mailto:news@countryaircheck.com)

**CRS '22**

FEBRUARY 23-25 | NASHVILLE

**STREAMING SUMMIT**

**EXPANDED, ALL-DAY PROGRAM FOR 2022 WILL HELP OUR INDUSTRY BETTER UNDERSTAND AND SUCCEED IN THE EVER-EVOLVING WORLD OF STREAMING**

**ONE-DAY RATE \$249**

**REGISTER NOW!**

**AVAILABLE JOBS****MIDWEST**

Summit **KFDI/Wichita** OM **Justin Case** is searching for a morning co-host. See the complete posting [here](#); send résumés and airchecks to Case [here](#).

Alpha **KZEN/Columbus, NE** Dir./Content **David Gustafson** is seeking a morning host. See the complete job description and apply [here](#); reach Gustafson [here](#).

Midwest/**Peoria, IL** VP/MM **Mike Wild** is looking to add an OM for the cluster that includes Country **WXCL**. See the complete job description [here](#); send résumés, cover letters and airchecks to Wild [here](#).

Townsquare **KOEL/Waterloo, IA** Dir./Content **Johnny Marks** is searching for a Brand Mgr./morning host. See the complete job description and apply [here](#); send résumés and airchecks to Marks [here](#).

Zimmer **KATI/Jefferson City, MO** OM **Jeremy Washington** is seeking a PD/morning co-host. Send résumés, social media samples and airchecks to him [here](#).

Townsquare SVP/Content & Programming **Kurt Johnson** is looking for a Dir./Content for the **Lansing, MI** cluster that includes Country **WITL**. Send résumés and airchecks [here](#).

MacDonald **WKCQ/Saginaw, MI** OM/PD **Jason Addams** is looking for a full-time, live night host. Send résumés and airchecks to him [here](#).

**NORTHEAST**

Cumulus **WCTO/Allentown, PA** OM/PD **Jerry Padden** is searching for a morning co-host. Complete job description and application [here](#).

**SOUTHEAST**

Summit/**Louisville** OM **Cagle** is seeking a full-time midday personality

with at least two years of on-air experience to join Country **WQNU**; PPM experience is a plus. Send résumés and airchecks to Cagle [here](#).

Mel Wheeler **WSLC/Roanoke, VA** Dir./HR **Cheryl Skinner** is looking for a midday personality. Send résumés and airchecks to her [here](#).

Gulf South **WTVY/Dothan, AL** GM **Bryan Holladay** is seeking an OM/PD/morning co-host who can also handle PD duties for Top 40 sister **WKMX**. Send résumés and airchecks [here](#).

Townsquare **KMDL/Lafayette, LA** PD **Jude Walker** is searching for a midday personality. Complete job description and application [here](#).

**Dick/Savannah, GA** is in need of an OM to oversee the cluster that includes Country **WUBB**. Complete job description and application [here](#).

Summit/**Knoxville** Pres. **Chris Protzman** is looking for a Mgr./Promotions to oversee the four-station cluster that includes Country **WCYQ**. Complete job description [here](#); send résumés [here](#).

**SOUTHWEST**

Brazos Valley **KORA/Bryan-College Station, TX** VP/GM **John Seigler** is searching for an MD/morning co-host with an understanding of Texas country. Send résumés and airchecks to him [here](#).

Cumulus VP/Country **Charlie Cook** is looking for a PD/midday personality for **KAYD/Beaumont, TX**. See the complete job description and apply [here](#).

Cox **KCYF/San Antonio** PD **Christi Brooks** is searching for a morning co-host to join incumbent **Beth Chandler**. Apply [here](#).

Alpha/**Amarillo, TX** MM **Cal Hall** is seeking a Content Dir./Brand Mgr. for the cluster that includes

Country **KGNC**. Complete job description and application [here](#).

**WEST COAST**

Cumulus **KBUL/Reno, NV** PD/morning host **Bob Richards** is seeking a full-time morning co-host to join *The Moo Crew*. Complete job description [here](#); send résumés and airchecks to Richards [here](#).

Cumulus **KATM/Modesto, CA** PD **Andy Winford** is looking for a third-mic morning co-host to join **DJ Walker** and **Jaimee Lee**. See complete job description and apply [here](#).

Townsquare **KAWO/Boise** Brand Mgr. **Chris Pickett** is searching for a live midday personality. Job description and application [here](#).

**OTHER**

Townsquare Country Format Lead **Doug Montgomery** has immediate openings for PDs and morning talent. Send résumés and airchecks to him [here](#).

iHeartMedia EVP/Country Programming Strategy **Rod Phillips** has current openings for "great PDs in various size markets." Send résumés and airchecks to him [here](#).

**Pandora** is adding a Dir./Country Programming to manage the programming and curation of country music destinations on the platform. See the complete job description and apply [here](#).

Townsquare Country Format Lead **Doug Montgomery** is searching for an Exec. Prod./Content Prod./on-air talent to join nationally syndicated *Taste Of Country Nights*. Complete job description and application [here](#).

## SEEKING JOBS

**•Tony Kelly**

Former WUSN/Chicago morning producer  
[KellyT\\_60468@yahoo.com](mailto:KellyT_60468@yahoo.com)  
 708-642-8518

**•Greg Cole**

Former WKCQ/Saginaw, MI OM/PD  
[GCole27000@gmail.com](mailto:GCole27000@gmail.com)  
 916-502-4734

**•Jonathan West**

Former WKTI/Milwaukee afternoons  
[JonathanWestRadio@gmail.com](mailto:JonathanWestRadio@gmail.com)  
 320-774-9300

**•Marc Lavik** (aka Dave Marcus)

Former on-air talent  
[ZimaGuy@gmail.com](mailto:ZimaGuy@gmail.com)  
 401-467-6737

**•Cory Mikhals**

Former KIZN/Boise morning co-host  
[CoryProductions@icloud.com](mailto:CoryProductions@icloud.com)

**•"Big" John Horton**

Former KFSA/Ft. Smith, AR afternoon host  
[BigJohn@TheBigJohnShow.com](mailto:BigJohn@TheBigJohnShow.com)

**•Kris Richards**

Former WKJO/Smithfield, NC afternoons  
[FireCop947@yahoo.com](mailto:FireCop947@yahoo.com)

**•AJ McCloud**

Former WFFF/Huntsville, AL APD/afternoons  
[AJ.McCloud@charter.net](mailto:AJ.McCloud@charter.net)  
 256-503-2301

**•Mac Daniels**

Former KPLX & KSCS/Dallas PD  
[MacDaniels@me.com](mailto:MacDaniels@me.com)

**•Brittany Tully**

Former WYNK/Baton Rouge PD  
[BriLynn718@gmail.com](mailto:BriLynn718@gmail.com)

**•Bill Hickok**

Former KBMR/Bismark, ND morning host  
[BillHickok1950@gmail.com](mailto:BillHickok1950@gmail.com)

**•Amy Nic**

Former WAMZ/Louisville afternoon host  
[AmyNicRadioChick@gmail.com](mailto:AmyNicRadioChick@gmail.com)

**•Ron "Keyes" Stevens**

Former WQRB/Eau Claire, WI  
 afternoon host  
[RonStvns@yahoo.com](mailto:RonStvns@yahoo.com)

**•Scott Davidson**

Former WHOF-HD2/Canton, OH PD/on-air host  
[Davidson1023@gmail.com](mailto:Davidson1023@gmail.com)

**•Trace Hamilton**

Former WEBG/Chicago night host  
[TheTraceHamilton@gmail.com](mailto:TheTraceHamilton@gmail.com)

**•Ryan McCall**

Former WGLR/Platteville, WI MD/afternoons  
[RyanMcCall@yahoo.com](mailto:RyanMcCall@yahoo.com)

**•David Dean**

Former KXDD/Yakima, WA afternoons  
[DaviDean5@gmail.com](mailto:DaviDean5@gmail.com)

**•Brian "Wookie" Kostek**

Former WDSY/Pittsburgh APD/MD/afternoons  
[BKostek24@gmail.com](mailto:BKostek24@gmail.com)

**•Kim Brixton**

Former WNNW/Battle Creek, MI mornings/middays  
[KimBrixton@gmail.com](mailto:KimBrixton@gmail.com)

**•Mark McKay**

Former Riser House Dir./Southeast Promotion  
[MMcKay973@gmail.com](mailto:MMcKay973@gmail.com)

**•Tim Taylor**

Former KWJJ/Portland afternoons  
[Tim.Taylor1@comcast.net](mailto:Tim.Taylor1@comcast.net)

**•Amber Rainey**

Former KSON/San Diego middays  
[AmberRaineyOnAir@gmail.com](mailto:AmberRaineyOnAir@gmail.com)

**•Tami Rumpfelt**

Former WPAW/Greensboro afternoons  
[TamiRumpfelt@gmail.com](mailto:TamiRumpfelt@gmail.com)

**•Darlene Evans**

Former WKIS/Miami middays  
[DarleneInc@yahoo.com](mailto:DarleneInc@yahoo.com)

**•Mark "Skid" Lavin**

Former WOTW/Orlando Dir./Production  
 & On-Air  
[MarkLavin@yahoo.com](mailto:MarkLavin@yahoo.com)  
 407-619-5346

**•Kerry Wolfe**

Former WMIL/Milwaukee SVPP & PD  
[KerryLWolfe@hotmail.com](mailto:KerryLWolfe@hotmail.com)  
 414-788-3764

**•Keith Abrams**

Former iHeartMedia/Cleveland OM  
[KeithAbrams961@gmail.com](mailto:KeithAbrams961@gmail.com)

**•Mike McKay**

Former WQRB/Eau Claire, WI Brand Mgr./mornings  
[McKProd@charter.net](mailto:McKProd@charter.net)

**•Jimmy Elliott**

Former WOYK/Wheeling, WV WPP/PD/MD/  
 mornings  
[JimmyElliottSchlosser@gmail.com](mailto:JimmyElliottSchlosser@gmail.com)

**•Steve Powers**

Former iHeartMedia/Mobile, AL SVPP  
[StevePowers961@yahoo.com](mailto:StevePowers961@yahoo.com)

**•Jim Dorman**

Former iHeartMedia/Wichita SVPP & Country  
 KZSN PD/middays  
[JimDorman2@aol.com](mailto:JimDorman2@aol.com)

**•Eddie Rupp**

Former iHeartMedia/Sarasota, FL SVPP/OM &  
 Country WCTQ middays  
[ER-1001@hotmail.com](mailto:ER-1001@hotmail.com)

**•Amy Lynn**

Former WCKT/Ft. Myers, FL middays  
[AmyLynnRadio@gmail.com](mailto:AmyLynnRadio@gmail.com)

**•Bill "Stu" Stewart**

Former KASH/Anchorage, AK PD/  
 morning co-host  
[BStu1013@gmail.com](mailto:BStu1013@gmail.com)

**•Ashley King**

Former KHLR/Little Rock, AR afternoons  
[AKingMarsh@gmail.com](mailto:AKingMarsh@gmail.com)

**•Jess Tyler**

Former WOKQ/Portsmouth, NH Brand Mgr./  
 MD/middays  
[JTyler1999@yahoo.com](mailto:JTyler1999@yahoo.com)

**•Jim Pearson**

Former KDBL/Yakima, WA PD/mornings  
[JimsCoolEmail@gmail.com](mailto:JimsCoolEmail@gmail.com)  
 831-261-1822

**•Crash Poteet**

Former WPOR/Portland, ME Brand Mgr./  
 afternoons  
[OKCCrash@gmail.com](mailto:OKCCrash@gmail.com)

**•Aaron "Gator" Glass**

Former WQNU/Louisville mornings  
[GatorGlass.53@gmail.com](mailto:GatorGlass.53@gmail.com)

**•Todd Elbrink**

Former Cox/Houston DOS  
[TElbrink@icloud.com](mailto:TElbrink@icloud.com)

**•Carly Quinn**

Former WGH/Norfolk morning co-host  
[NewEnglandClamChowder2021@yahoo.com](mailto:NewEnglandClamChowder2021@yahoo.com)  
 757-617-8171

**•Chuck Reeves**

Former KTFW/Dallas & KTWF/Wichita Falls, TX  
 PD/afternoons  
[ChuckReeves33@yahoo.com](mailto:ChuckReeves33@yahoo.com)

**•Chuck "DZL" Thompson**

Former WKKT/Charlotte PD  
[DZLradio@gmail.com](mailto:DZLradio@gmail.com)  
 704-615-7095

**•Corey Garrison**

Former WTHT/Portland, ME PD  
[GarrisonCorey@yahoo.com](mailto:GarrisonCorey@yahoo.com)

**•Jared Marlowe**

Former WWOE/Tallahassee weekender  
[RadioJared@gmail.com](mailto:RadioJared@gmail.com)

**•Dan Gallo**

Former KTHT/Houston morning co-host  
[DanJGallo@hotmail.com](mailto:DanJGallo@hotmail.com)

**•Chuck Akers**

Former KTHT/Houston morning co-host  
[chuckakers@comcast.net](mailto:chuckakers@comcast.net)

**•Ryan Wild**

Former WLHK/Indianapolis PD/middays  
[WildOnAir@aol.com](mailto:WildOnAir@aol.com)  
 815-353-6101

**•Stephanie Crist**

Former KMDL/Lafayette, LA midday personality  
[StephanieCrist1956@gmail.com](mailto:StephanieCrist1956@gmail.com)

**November 2021 PPM Scoreboard**

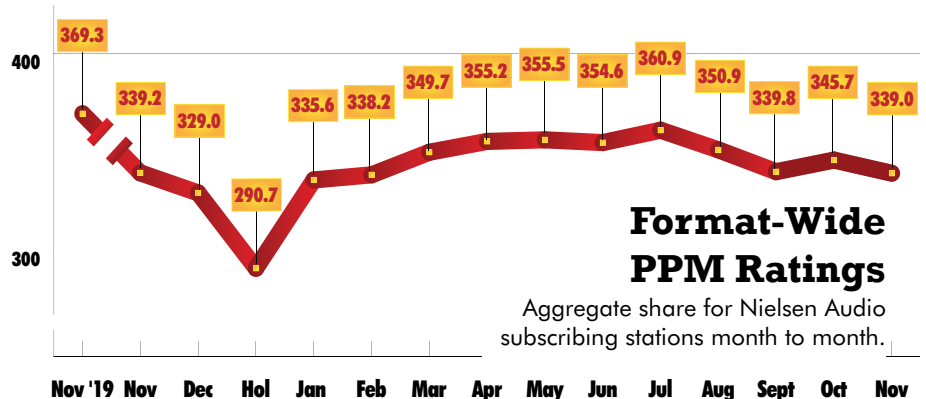
The flip of **WNSH/New York** out of the format (CAT 10/22) eight days into the November 2021 PPM Book (10/14-11/10) had a significant effect on overall share and came for the format. Overall shares for the format were down 6.7% from 345.7 to 339. That is nearly even with last November's 339.2. Excluding WNSH from October, format shares inched up slightly 0.5%. WNSH led the format in cume last month, so it is no surprise to see format cume decrease 4.4% from last month with its departure to 24,154,100. Without the loss of WNSH, format cume would be almost flat from October. **KVET/Austin** makes history this month, claiming the largest

share among PPM markets for the first time ever, as it barely edges out **WWYZ/Hartford**. **WKKT/Charlotte** claims its first No. 1 finish in over three and a half years to join **KYGO/Denver** as the only two stations to top their respective markets in November. **KKBQ/Houston** leads the format in cume for the month, the first time it has done so since May 2018. Legend: A "+" indicates a Classic Country outlet; a "^" designates co-owned Country stations in the metro; a "\*" indicates a tie; and a "\*" indicates a station that is a recent subscriber for which ratings were not currently available. Ranks are among subscribers.

Nov. PPM Top 10					
SHARE					
	OCT	NOV			
<b>4</b>	<b>1</b>	<b>1</b>	<b>KVET/Austin</b>	<b>7.7</b>	<b>7.7</b>
<b>1†</b>	<b>2</b>	<b>2</b>	<b>WWYZ/Hartford</b>	<b>7.6</b>	<b>7.6</b>
<b>1†</b>	<b>3</b>	<b>3</b>	<b>WCTK/Providence</b>	<b>7.4</b>	<b>7.4</b>
<b>5</b>	<b>4</b>	<b>4</b>	<b>WCOL/Columbus</b>	<b>7.2</b>	<b>7.2</b>
<b>8†</b>	<b>5</b>	<b>5</b>	<b>WPOC/Baltimore</b>	<b>7.1</b>	<b>7.1</b>
<b>10</b>	<b>6†</b>	<b>6†</b>	<b>WKKT/Charlotte</b>	<b>6.9</b>	<b>6.9</b>
<b>3</b>	<b>6†</b>	<b>6†</b>	<b>WFMS/Indianapolis</b>	<b>6.9</b>	<b>6.9</b>
<b>8†</b>	<b>6†</b>	<b>6†</b>	<b>KSOP/Salt Lake City</b>	<b>6.9</b>	<b>6.9</b>
<b>6†</b>	<b>9</b>	<b>9</b>	<b>WQIK/Jacksonville</b>	<b>6.8</b>	<b>6.8</b>
<b>--</b>	<b>10</b>	<b>10</b>	<b>WSIX/Nashville</b>	<b>6.7</b>	<b>6.7</b>

Station/City	Oct 6+ Share	Rank	Nov 6+ Share	Rank	Oct Cume	Nov Cume	Station/City	Oct 6+ Share	Rank	Nov 6+ Share	Rank	Oct Cume	Nov Cume
WKHX/Atlanta	2.3	15†	2.4	15†	351,700	345,800	WMIL/Milwaukee	6.1	6	4.7	8†	279,000	257,500
WUBL/Atlanta	2.6	12†	2.4	15†	431,700	379,800	KEEY/Minneapolis	5.5	6	5.0	8†	446,200	420,000
KASE/Austin ^	3.8	10†	3.3	10	196,500	181,500	KMNB/Minneapolis	1.6	19	2.4	15	257,700	300,200
KVET/Austin ^	7.4	2†	7.7	2	284,300	281,500	KLCI/Minneapolis+	1.8	15†	1.8	18	151,000	111,100
KOKE/Austin	0.9	20	1.4	18†	70,600	80,100	WKDF/Nashville ^	3.7	12	3.2	12	146,700	155,000
WPOC/Baltimore	6.7	2	7.1	2	284,900	274,300	WSIX/Nashville	4.9	9†	6.7	4	214,700	217,700
WKLB/Boston	5.7	6	5.2	6	586,800	524,000	WSM-FM/Nashville ^	4.4	11	5.8	6†	187,400	196,800
WBWL/Boston	1.6	21	1.8	19	320,900	357,000	WNSH/Nassau (New York)	1.4	22†	*	*	101,200	*
WCTK/Boston (Providence)	0.8	24	0.6	25	132,500	105,600	WNSH/New York	2.1	19†	*	*	863,100	*
WKKT/Charlotte	6.4	2	6.9	1	350,200	334,000	WGH/Norfolk	4.6	6†	4.2	10	172,400	178,500
WSOC/Charlotte	5.6	3†	5.2	4†	334,000	322,200	WUSH/Norfolk	4.5	8†	4.9	6	158,800	149,500
WUSN/Chicago	2.4	17†	2.4	16†	721,100	762,900	WWKA/Orlando	6.8	4	5.2	9	159,300	154,900
WUBE/Cincinnati ^	6.0	3	5.9	3	327,000	352,300	WXTU/Philadelphia	4.6	8	4.4	8	524,400	537,200
WNKN/Cincinnati+	2.6	12	2.7	12	134,200	143,200	KMLE/Phoenix	3.5	10	3.0	14	420,200	428,000
WNNF/Cincinnati	2.0	15	1.9	15	150,100	168,500	KNIX/Phoenix	4.4	6†	4.0	7	487,500	493,400
WYGY/Cincinnati ^	1.1	20	1.1	19	104,200	118,200	WDSY/Pittsburgh	4.0	10	4.0	10	238,000	244,700
WGAR/Cleveland	6.2	7	6.3	6	294,900	279,300	WPGB/Pittsburgh	2.7	13	2.9	13	181,900	191,100
WCOL/Columbus, OH	6.9	4	7.2	3	279,900	269,700	WLYI/Pittsburgh ^ +	1.8	14	1.9	14	75,900	82,700
KPLX/Dallas ^	3.1	13†	4.1	6†	784,000	763,200	WOGG/Pittsburgh ^	0.7	21†	0.6	22	57,200	50,600
KSCS/Dallas ^	3.9	7	3.6	9	621,900	681,300	WOGI/Pittsburgh ^	1.2	15†	1.5	15†	88,900	89,600
KYGO/Denver	6.1	1†	6.2	1	364,000	357,300	KUPL/Portland	3.5	12	3.7	11†	254,200	244,600
KWBL/Denver	2.5	17†	2.0	19	194,200	186,900	KWJJ/Portland	2.5	18†	2.6	17	239,200	261,500
WDRQ/Detroit	1.8	17†	1.8	19	254,400	287,500	WCTK/Providence	7.9	3	7.4	4	268,100	270,500
WYCD/Detroit	4.4	10	4.1	9†	529,000	471,600	WNCB/Raleigh	2.7	13	2.2	15	133,400	119,300
WPAW/Greensboro	4.5	7†	4.3	8	175,900	164,300	WQDR/Raleigh	4.2	8	4.4	9	206,600	199,000
WTQR/Greensboro	6.1	6	6.2	6	175,300	182,500	KFRG/Riverside	3.7	8	4.3	5	216,900	250,300
WWYZ/Hartford	7.9	2	7.6	2	182,700	178,600	KNCI/Sacramento	5.1	8	5.6	6	313,500	307,000
KILT/Houston	3.1	15†	3.4	11	682,000	735,400	KNTY/Sacramento +	1.3	16	1.7	15	67,200	75,900
KKBQ/Houston ^	4.0	9	4.1	10	746,600	764,400	KYRV-HD2/Sacramento	0.8	19†	0.7	22†	46,500	43,400
KTHT/Houston ^ +	2.3	21	2.0	21	366,500	359,300	KEGA/Salt Lake City	0.9	23	0.7	26	112,400	103,900
WFMS/Indianapolis	7.7	4	6.9	7	252,200	222,300	KSOP/Salt Lake City	6.7	3	6.9	4	233,200	267,200
WLHK/Indianapolis	5.7	7	3.9	11	231,700	199,600	KUBL/Salt Lake City	3.0	11†	3.7	11	199,900	229,200
WGNE/Jacksonville	5.1	7	5.8	6	184,700	185,300	KAJA/San Antonio	4.5	7†	4.5	9	405,900	377,700
WQIK/Jacksonville	6.8	5	6.8	5	193,500	221,900	KCYX/San Antonio ^	5.2	5	5.4	5	538,500	546,200
KBEQ/Kansas City ^	3.7	11	3.6	12	200,400	223,700	KKYX-AM/San Antonio ^ +	1.2	21†	1.3	20	112,200	99,300
KFKF/Kansas City ^	4.7	6	4.0	10	246,300	229,400	KSON/San Diego	5.3	3	5.8	3	335,800	338,300
WDAF/Kansas City	4.9	5	5.4	5	310,300	323,000	KRTY/San Jose	3.9	7†	4.3	6†	136,000	129,900
KCYE/Las Vegas	2.3	14	2.5	12†	163,800	165,400	KKWF/Seattle	3.5	13	2.6	18†	380,900	319,500
KWNR/Las Vegas	4.7	5†	5.0	5	173,000	149,800	KNUC/Seattle	2.6	16†	2.2	21	298,200	249,800
KKGO/Los Angeles	2.5	13†	2.3	16	601,300	599,000	KSD/St. Louis	4.2	13	4.5	9	393,300	398,300
WGKX/Memphis	4.4	8	4.2	8†	134,300	147,100	WIL/St. Louis	4.4	11†	4.4	10†	329,800	361,700
WLFP/Memphis	2.1	13†	2.3	14	84,800	88,300	WFUS/Tampa	3.8	9†	4.7	7	327,400	327,100
WKIS/Miami	2.5	16	2.5	17	270,300	306,300	WQYK/Tampa	3.8	9†	3.7	9†	308,000	300,800
WNSH/Middlesex (New York)	5.0	7	*	*	156,500	*	WMZQ/Washington	3.7	12	3.8	11†	405,700	419,700
WKMK/Middlesex (Monmouth)	1.1	24	1.7	19†	58,100	79,700	WIRK/West Palm Beach	3.1	8	3.9	6	93,000	102,500

Nov. PPM Top 10			
CUME			
OCT	NOV		
<b>3</b>	<b>1</b>	<b>KKBQ/Houston</b>	<b>764,400</b>
<b>2</b>	<b>2</b>	<b>KPLX/Dallas</b>	<b>763,200</b>
<b>4</b>	<b>3</b>	<b>WUSN/Chicago</b>	<b>762,900</b>
<b>5</b>	<b>4</b>	<b>KILT/Houston</b>	<b>735,400</b>
<b>6</b>	<b>5</b>	<b>KSCS/Dallas</b>	<b>681,300</b>
<b>7</b>	<b>6</b>	<b>KKGO/Los Angeles</b>	<b>599,000</b>
<b>9</b>	<b>7</b>	<b>KCYX/San Antonio</b>	<b>546,200</b>
<b>--</b>	<b>8</b>	<b>WXTU/Philadelphia</b>	<b>537,200</b>
<b>8</b>	<b>9</b>	<b>WKLB/Boston</b>	<b>524,000</b>
<b>--</b>	<b>10</b>	<b>KNIX/Phoenix</b>	<b>493,400</b>



LW TW Artist/Title (Label)

Total Points +/- Points Total Plays +/- Plays Audience +/- Aud Stations ADDS

LW	TW	Artist/Title (Label)	Total Points	+/- Points	Total Plays	+/- Plays	Audience	+/- Aud	Stations	ADDS
4	1	<b>KENNY CHESNEY</b> ✓ Knowing You (Blue Chair/Warner/WEA)	30390	5575	8441	1517	38.071	5.287	158	0
2	2	<b>DUSTIN LYNCH f/M. PORTER</b> /Thinking 'Bout You (Broken Bow)	29717	332	8233	86	39.021	0.491	158	0
1	3	<b>ZAC BROWN BAND</b> /Same Boat (Home Grown/Warner/WAR)	25621	-5010	7074	-1448	33.859	-5.743	158	0
3	4	<b>LUKE COMBS</b> /Cold As You (River House/Columbia)	25505	-1098	7029	-253	33.282	-2.166	158	0
5	5	<b>MICHAEL RAY</b> /Whiskey And Rain (Warner/WEA)	23476	1111	6554	306	29.22	2.024	158	0
8	6	<b>JORDAN DAVIS</b> /Buy Dirt f/Luke Bryan (MCA)	21615	1161	6086	305	26.665	1.007	157	0
6	7	<b>JON PARDI</b> /Tequila Little Time (Capitol)	21309	-104	5892	-18	27.669	1.18	158	0
9	8	<b>CHRIS STAPLETON</b> /You Should Probably Leave (Mercury) ✓	20273	1881	5598	525	25.808	2.764	156	0
10	9	<b>J. ALLEN &amp; B. PAISLEY</b> /Freedom Was A Highway (Stoney Creek)	17962	571	4988	136	22.282	0.887	158	0
11	10	<b>KANE BROWN</b> /One Mississippi (RCA) ✓	17131	1205	4828	361	21.656	1.468	157	0
12	11	<b>MORGAN WALLEN</b> /Sand In My Boots (Big Loud)	16388	873	4598	244	20.22	1.05	157	0
13	12	<b>K. BALLERINI f/K. CHESNEY</b> /Half Of My Hometown (Black River)	15578	853	4447	255	19.371	1.684	157	0
14	13	<b>PRISCILLA BLOCK</b> /Just About Over You (InDent/Mercury)	14319	634	3941	160	16.28	0.626	156	0
15	14	<b>PARKER MCCOLLUM</b> /To Be Loved By You (MCA)	12985	211	3622	86	13.915	0.025	154	1
16	15	<b>RUSSELL DICKERSON</b> /Home Sweet (Triple Tigers)	12805	109	3546	35	14.809	0.567	155	0
17	16	<b>ERIC CHURCH</b> /Heart On Fire (EMI Nashville)	12325	429	3422	72	14.058	1.055	157	0
19	17	<b>SAM HUNT</b> /23 (MCA)	12027	1026	3368	296	13.426	1.398	155	1
18	18	<b>ELLE KING &amp; MIRANDA LAMBERT</b> /Drunk ... (RCA/Columbia)	11876	466	3316	112	12.8	0.627	130	0
20	19	<b>CALLISTA CLARK</b> /It's 'Cause I Am (Big Machine)	11022	-38	3150	21	10.447	-0.843	158	0
21	20	<b>BLAKE SHELTON</b> /Come Back As A Country Boy (Warner/WMN)	9522	630	2631	182	10.321	0.444	155	0
23	21	<b>C. PEARCE &amp; A. MCBRYDE</b> /Never Wanted... (Big Machine/WMN)	9271	1046	2635	349	8.919	0.378	156	1
22	22	<b>HARDY</b> /Give Heaven Some Hell (Big Loud)	8847	115	2506	22	9.143	0.414	150	1
25	23	<b>D. BENTLEY w/BRELAND &amp; HARDY</b> /Beers... (Atlantic/Big Loud/Capitol)	7905	309	2062	96	8.623	-0.323	153	3
24	24	<b>KEITH URBAN</b> /Wild Hearts (Capitol)	7856	79	2219	50	7.747	-0.17	152	1
26	25	<b>JAKE OWEN</b> /Best Thing Since Backroads (Big Loud)	7342	-46	2091	38	6.435	-1.004	152	2

©2021 Country Aircheck™ All rights reserved. Sign up at [countryaircheck.com](http://countryaircheck.com) • Send news to [news@countryaircheck.com](mailto:news@countryaircheck.com) ✓=Top 5 Point Gainers

**TRIPLE TIGERS RECORDS**

**Scotty McCreery** **DAMN STRAIT**

**39\***

**TOP 10 MOST ADDED AGAIN**

**FASTEST GROWING SINGLE OF HIS CAREER**

LW	TW	Artist/Title (Label)	Total Points +/-	Points	Total Plays +/-	Plays	Audience +/-	Aud	Stations	ADDS
27	26	MIRANDA LAMBERT/If I Was A Cowboy (RCA)	6777	194	1871	70	8.065	0.559	145	1
28	27	THOMAS RHETT/Slow Down Summer (Valory)	6155	180	1649	34	6.548	-0.707	138	6
32	28	CODY JOHNSON/Til You Can't (CoJo/Warner/WMN)	5976	722	1620	193	6.921	2.117	122	17
30	29	LAUREN ALAINA w/JON PARDI/Getting Over Him (Mercury)	5893	332	1728	105	5.307	0.609	149	1
29	30	LUKE BRYAN/Up (Capitol)	5823	258	1569	102	6.323	-0.206	139	2
34	31	DAN + SHAY/Steal My Love (Warner/WAR)	5434	836	1536	248	6.025	0.818	140	12
35	32	C. SWINDELL & L. WILSON/Never Say... (Warner/WMN/BBR) ✓	5306	1439	1359	406	5.565	1.679	132	15
31	33	TIM MCGRAW/7500 OBO (Big Machine)	5294	195	1445	44	5.504	0.695	142	4
33	34	TOBY KEITH/Old School (Show Dog)	5056	29	1516	45	4.268	0.675	137	0
36	35	BROTHERS OSBORNE/I'm Not For Everyone (EMI Nashville)	4037	396	1190	110	4.779	0.846	119	4
38	36	FRANK RAY/Country'd Look Good On You (Stoney Creek)	3684	118	1099	24	2.353	-0.162	100	3
<b>AIRBORNE</b>		DYLAN SCOTT/New Truck (Curb)	3485	531	1023	149	2.663	0.134	100	17
39	38	TENILLE ARTS/Back Then, Right Now (19th & Grand)	3466	-10	1085	29	1.929	-0.104	121	3
42	39	SCOTTY MCCREERY/Damn Strait (Triple Tigers)	3077	387	894	124	2.1	0.404	103	8
41	40	CAROLINE JONES/Come In ... (Mailboat/New Revolution)	2817	69	940	44	1.199	0.066	82	0
<b>AIRBORNE</b>		T. SWIFT f/C. STAPLETON/I Bet You Think... (Republic/MCA)	2794	359	793	124	2.478	0.067	97	6
43	42	NATE BARNES/You Ain't Pretty (Quartz Hill)	2788	105	894	27	1.456	0.122	100	0
45	43	C. YOUNG w/M. TENPENNY/At The End Of A Bar (RCA)	2577	214	676	47	1.536	0.165	89	5
44	44	CHRIS LANE/Fill Them Boots (Big Loud)	2545	8	757	12	2.101	-0.051	91	1
47	45	DREW PARKER/While You're Gone (Warner/WMN)	2416	111	653	40	1.921	0.222	71	2
48	46	CHRIS JANSON/Bye Mom (Warner/WAR)	2269	56	652	7	1.542	0.034	77	0
50	47	PARMALEE/Take My Name (Stoney Creek)	2072	257	601	79	1.541	0.308	59	1
49	48	CHASE RICE/If I Were Rock & Roll (Dack Janiels/Broken Bow)	2057	171	588	39	0.987	0.038	76	3
Debut	49	MIDLAND/Sunrise Tells The Story (Big Machine)	1848	85	520	38	1.692	0.171	73	3
Debut	50	NIKO MOON/Paradise To Me (RCA)	1829	98	560	27	1.197	0.036	58	3

©2021 Country Aircheck™ All rights reserved. Sign up at [countryaircheck.com](http://countryaircheck.com) • Send news to [news@countryaircheck.com](mailto:news@countryaircheck.com) ✓=Top 5 Point Gainers



**parmalee**  
*TAKE MY NAME*

**24 MILLION STREAMS  
AND GROWING!**

**CLICK TO LISTEN**





**Country Aircheck Add Leaders**

	Adds
<b>WALKER HAYES/AA</b> (Monument)	48
<b>CODY JOHNSON/Til You Can't</b> (CoJo/Warner/WMN)	17
<b>DYLAN SCOTT/New Truck</b> (Curb)	17
<b>LEE BRICE/Soul</b> (Curb)	16
<b>C. SWINDELL &amp; L. WILSON/Never Say Never</b> (Warner/WMN/BBR)	15
<b>DAN + SHAY/Steal My Love</b> (Warner/WAR)	12
<b>SCOTTY MCCREERY/Damn Strait</b> (Triple Tigers)	8
<b>MORGAN EVANS/Love Is Real</b> (Warner/WEA)	7
<b>T. SWIFT f/C. STAPLETON/I Bet You Think About Me</b> (Republic/MCA)	6
<b>THOMAS RHETT/Slow Down Summer</b> (Valory)	6

**Country Aircheck Top Point Gainers**

<b>KENNY CHESNEY/Knowing You</b> (Blue Chair/Warner/WEA)	5575 ✓
<b>CHRIS STAPLETON/You Should Probably Leave</b> (Mercury)	1881 ✓
<b>C. SWINDELL &amp; L. WILSON/Never...</b> (Warner/WMN/Broken Bow)	1439 ✓
<b>LEE BRICE/Soul</b> (Curb)	1398 ✓
<b>KANE BROWN/One Mississippi</b> (RCA)	1205 ✓
<b>JORDAN DAVIS f/LUKE BRYAN/Buy Dirt</b> (MCA)	1161
<b>MICHAEL RAY/Whiskey And Rain</b> (Warner/WEA)	1111
<b>C. PEARCE &amp; A. MCBRYDE/Never...</b> (Big Machine/WMN)	1046
<b>SAM HUNT/23</b> (MCA)	1026
<b>MORGAN WALLEN/Sand In My Boots</b> (Big Loud)	873

**Country Aircheck Top Spin Gainers**

<b>KENNY CHESNEY/Knowing You</b> (Blue Chair/Warner/WEA)	1517
<b>CHRIS STAPLETON/You Should Probably Leave</b> (Mercury)	525
<b>C. SWINDELL &amp; L. WILSON/Never...</b> (Warner/WMN/Broken Bow)	406
<b>KANE BROWN/One Mississippi</b> (RCA)	361
<b>LEE BRICE/Soul</b> (Curb)	359
<b>C. SWINDELL &amp; L. WILSON/Never...</b> (Warner/WMN/Broken Bow)	349
<b>MICHAEL RAY/Whiskey And Rain</b> (Warner/WEA)	306
<b>JORDAN DAVIS f/LUKE BRYAN/Buy Dirt</b> (MCA)	305
<b>SAM HUNT/23</b> (MCA)	296
<b>K. BALLERINI f/K. CHESNEY/Half Of My Hometown</b> (Black River)	255

**Activator Top Point Gainers**

<b>KENNY CHESNEY/Knowing You</b> (Blue Chair/Warner/WEA)	934 ✓
<b>C. PEARCE &amp; A. MCBRYDE/Never...</b> (Big Machine/WMN)	864 ✓
<b>CHRIS STAPLETON/You Should Probably Leave</b> (Mercury)	705 ✓
<b>C. SWINDELL &amp; L. WILSON/Never Say...</b> (Warner/WMN/BBR)	680 ✓
<b>K. BALLERINI f/K. CHESNEY/Half Of My...</b> (Black River)	405 ✓
<b>D. BENTLEY f/BRELAND &amp; HARDY/Beers...</b> (Atlantic/Big Loud/Capitol)	393
<b>BROTHERS OSBORNE/I'm Not For Everyone</b> (EMI Nashville)	389
<b>CODY JOHNSON/Til You Can't</b> (CoJo/Warner/WMN)	331
<b>LUKE COMBS/Doin' This</b> (River House/Columbia)	307
<b>JORDAN DAVIS f/LUKE BRYAN/Buy Dirt</b> (MCA)	295

**Activator Top Spin Gainers**

<b>KENNY CHESNEY/Knowing You</b> (Blue Chair/Warner/WEA)	187
<b>C. PEARCE &amp; A. MCBRYDE/Never Wanted...</b> (Big Machine/WMN)	163
<b>CHRIS STAPLETON/You Should Probably Leave</b> (Mercury)	135
<b>C. SWINDELL &amp; L. WILSON/Never Say...</b> (Warner/WMN/BBR)	103
<b>D. BENTLEY f/BRELAND &amp; HARDY/Beers...</b> (Atlantic/Big Loud/Capitol)	91
<b>K. BALLERINI f/K. CHESNEY/Half Of My...</b> (Black River)	78
<b>DAN + SHAY/Steal My Love</b> (Warner/WAR)	72
<b>BROTHERS OSBORNE/I'm Not For Everyone</b> (EMI Nashville)	69
<b>DYLAN SCOTT/New Truck</b> (Curb)	69
<b>MORGAN WALLEN/Sand In My Boots</b> (Big Loud)	69

**Country Aircheck Top Recurrents**

	Points
<b>J. ALDEAN &amp; C. UNDERWOOD/If I...</b> (Macon Music/BBR/Capitol)	26733
<b>RYAN HURD w/MAREN MORRIS/Chasing After You</b> (Arista)	16535
<b>CHRIS YOUNG &amp; KANE BROWN/Famous Friends</b> (RCA)	16117
<b>WALKER HAYES/Fancy Like</b> (Monument)	15614
<b>LUKE COMBS/Forever After All</b> (River House/Columbia Nash)	14135
<b>CHASE RICE f/FGL./Drinkin' Beer...</b> (Dack Janiels/BBR/BMLGR)	12788
<b>LEE BRICE/Memory I Don't Mess With</b> (Curb)	10287
<b>J. RODGERS f/LUKE COMBS/Cold...</b> (River House/Columbia)	10224
<b>COLE SWINDELL/Single Saturday Night</b> (Warner/WMN)	10051
<b>LEE BRICE/One Of Them Girls</b> (Curb)	9739

©2021 Country Aircheck™ All rights reserved. Sign up at [countryaircheck.com](http://countryaircheck.com) • Send news to [news@countryaircheck.com](mailto:news@countryaircheck.com) ✓=Top 5 Point Gainers



**COUNTRY AIRCHECK ACTIVITY**

**DREW PARKER/While You're Gone** (Warner/WMN)  
 Moves 47-45\*  
 2416 points, 653 spins  
 2 adds: **WBWL, WUSJ**

**CHRIS JANSON/Bye Mom** (Warner/WAR)  
 Moves 48-46\*  
 2269 points, 652 spins; No adds

**PARMALEE/Take My Name** (Stoney Creek)  
 Moves 50-47\*  
 2072 points, 601 spins  
 1 add: **WWQM**

**CHASE RICE/If I Were Rock & Roll** (Dack Janiels/Broken Bow)  
 Moves 49-48\*  
 2057 points, 588 spins  
 3 adds: **KWBL, WLFP, WUSN**

**MIDLAND/Sunrise Tells The Story** (Big Machine)  
 Debuts 49\*  
 1848 points, 520 spins  
 3 adds: **WAVW, WRBT, WUSH\***

**NIKO MOON/Paradise To Me** (RCA)  
 Debuts 50\*  
 1829 points, 560 spins  
 3 adds: **WAVW, WPOR, WUSJ**

**MORGAN EVANS/Love Is Real** (Warner/WEA)  
 1741 points, 505 spins  
 7 adds: **KFDI\*, KTTS\*, WBWL, WCYQ\*, WKHK\*, WQNU\*, WZZK\***

**JUSTIN MOORE/With A Woman You Love** (Valory)  
 1726 points, 543 spins  
 1 add: **WPOR**

**LEE BRICE/Soul** (Curb)  
 1649 points, 443 spins  
 16 adds, including: **KJKE, KMLE, KPLM, KSON, KWBL, KXKT, WCTK, WGNE, WIRK, WNOE**

**MORGAN WADE/Wilder Days** (Arista)  
 1628 points, 507 spins  
 4 adds: **KILT\*, WGTY, WPOR, WUSN**

**ADD DATES**

Send yours to [adds@countryaircheck.com](mailto:adds@countryaircheck.com)

**DECEMBER 13**  
**OLD DOMINION/No Hard Feelings** (Arista)  
**I. ANDRESS w/S. HUNT/Wishful Drinking** (Atlantic/Warner/WEA)  
**CHAYCE BECKHAM & LINDSAY ELL/Can't Do Without Me** (Wheelhouse/Stoney Creek)

**DECEMBER 20**  
 None Listed

**JANUARY 3**  
 None Listed

**CHECK OUT**

**DECEMBER 10**  
**Various Hixtape: Vol. 2** (Big Loud)  
 Produced by Joey Moi, the Hardy-led collaboration mixtape features 14 songs and 33 artists, including Dierks Bentley, Morgan Wallen, Ronnie Dunn, Lainey Wilson, Jimmie Allen, Brantley Gilbert and Chase Rice.



**DECEMBER 25**  
**Lucas Hoge 12.25** (Forge)

©2021 Country Aircheck™ — All rights reserved. Sign up free at [www.countryaircheck.com](http://www.countryaircheck.com). Send news to [news@countryaircheck.com](mailto:news@countryaircheck.com)




**BROADCASTERS FOUNDATION OF AMERICA**

Your gift will help us reach every broadcaster in need.

**Learn more** [www.broadcasterfoundation.org](http://www.broadcasterfoundation.org)

LW	TW	Artist/Title (Label)	Points	+/- Points	Plays	+/- Plays	Stations	ADDS
1	1	<b>DUSTIN LYNCH f/MACKENZIE PORTER</b> <small>2<sup>nd</sup> Week at No. 1</small> Thinking 'Bout You (Broken Bow)	11074	105	2199	6	49	0
2	2	<b>LUKE COMBS</b> /Cold As You (River House/Columbia)	10225	-257	2060	-46	48	0
5	3	<b>JORDAN DAVIS f/LUKE BRYAN</b> /Buy Dirt (MCA)	9614	295	1933	57	49	0
4	4	<b>JON PARDI</b> /Tequila Little Time (Capitol)	9466	-206	1884	-23	47	0
8	5	<b>KENNY CHESNEY</b> /Knowing You (Blue Chair/Warner/WEA) ✓	8655	934	1770	187	46	0
7	6	<b>MICHAEL RAY</b> /Whiskey And Rain (Warner/WEA)	8324	248	1681	39	48	0
9	7	<b>CHRIS STAPLETON</b> /You Should Probably Leave (Mercury) ✓	8248	705	1682	135	49	0
10	8	<b>MORGAN WALLEN</b> /Sand In My Boots (Big Loud)	7194	218	1482	69	49	0
11	9	<b>KANE BROWN</b> /One Mississippi (RCA)	6994	256	1358	39	48	0
12	10	<b>ERIC CHURCH</b> /Heart On Fire (EMI Nashville)	6595	1	1254	-11	48	0
18	11	<b>KELSEA BALLERINI f/KENNY CHESNEY</b> /Half Of My Hometown (Black River) ✓	5560	405	1127	78	46	1
15	12	<b>BLAKE SHELTON</b> /Come Back As A Country Boy (Warner/WMN)	5539	218	1057	25	46	0
17	13	<b>SAM HUNT</b> /23 (MCA)	5478	210	1027	39	49	0
16	14	<b>PARKER MCCOLLUM</b> /To Be Loved By You (MCA)	5392	96	1053	12	47	0
13	15	<b>JIMMIE ALLEN &amp; BRAD PAISLEY</b> /Freedom Was A Highway (Stoney Creek)	5206	-198	1106	-20	45	0
14	16	<b>PRISCILLA BLOCK</b> /Just About Over You (InDent/Mercury)	5204	-132	1056	-24	46	0
19	17	<b>KEITH URBAN</b> /Wild Hearts (Capitol)	4892	134	908	44	48	1
25	18	<b>C. PEARCE &amp; A. MCBRYDE</b> /Never Wanted To Be That Girl (Big Machine/WMN) ✓	4155	864	802	163	48	6
21	19	<b>MIRANDA LAMBERT</b> /If I Was A Cowboy (RCA)	4063	134	795	19	47	0
20	20	<b>LUKE BRYAN</b> /Up (Capitol)	3978	-25	747	0	47	1
22	21	<b>RUSSELL DICKERSON</b> /Home Sweet (Triple Tigers)	3853	39	799	9	43	0
24	22	<b>E. KING &amp; M. LAMBERT</b> /Drunk (And I Don't Wanna Go Home) (RCA/Columbia)	3511	-133	661	-23	43	0
26	23	<b>HARDY</b> /Give Heaven Some Hell (Big Loud)	3178	35	619	11	45	2
27	24	<b>JAKE OWEN</b> /Best Thing Since Backroads (Big Loud)	3126	16	582	-2	47	2
28	25	<b>CODY JOHNSON</b> /'Til You Can't (CoJo/Warner/WMN)	2974	331	534	68	45	3
29	26	<b>DIERKS BENTLEY f/BRELAND &amp; HARDY</b> /Beers On Me (Atlantic/Big Loud/Capitol)	2814	393	533	91	48	4
30	27	<b>TIM MCGRAW</b> /7500 OBO (Big Machine)	2390	67	468	17	38	0
31	28	<b>THOMAS RHETT</b> /Slow Down Summer (Valory)	2211	121	362	12	35	0
33	29	<b>TOBY KEITH</b> /Old School (Show Dog)	1673	35	326	6	37	0
32	30	<b>TAYLOR SWIFT f/CHRIS STAPLETON</b> /I Bet You Think About Me (Republic/MCA)	1591	-150	255	-25	22	1

©2021 Country Aircheck™ All rights reserved. Sign up at [countryaircheck.com](http://countryaircheck.com) • Send news to [news@countryaircheck.com](mailto:news@countryaircheck.com) ✓=Top 5 Point Gainers



**GABBY BARRETT**



**WALKER HAYES**



**PARKER MCCOLLUM**



**JAMESON RODGERS**



**LAINEY WILSON**

## 2022 NEW FACES OF COUNTRY MUSIC

CONGRATULATIONS!

**CLICK TO REGISTER**



**CRS '22**  
FEBRUARY 23-25 | NASHVILLE

LW	TW	Artist/Title (Label)	Points	+/-	Points	Plays	+/-	Plays	Stations	Adds
35	31	📶 DAN + SHAY/Steal My Love (Warner/WAR)	1584	249	305	72	39	8		
34	32	LAUREN ALAINA w/JON PARDI/Getting Over Him (Mercury)	1424	-43	299	-4	38	0		
46	33	📶 COLE SWINDELL & LAINEY WILSON/Never Say Never (Warner/WMN/BBR) ✓	1364	680	265	103	44	9		
36	34	📶 SCOTTY MCCREERY/Damn Strait (Triple Tigers)	1268	78	218	15	21	2		
37	35	📶 JUSTIN MOORE/With A Woman You Love (Valory)	1234	56	229	9	14	1		
41	36	📶 BROTHERS OSBORNE/I'm Not For Everyone (EMI Nashville)	1137	389	243	69	32	6		
40	37	📶 LUKE COMBS/Doin' This (River House/Columbia)	1078	307	163	57	10	1		
39	38	📶 CHRIS YOUNG f/MITCHELL TENPENNY/At The End Of A Bar (RCA)	964	17	146	3	17	0		
38	39	CHRIS JANSON/Bye Mom (Warner/WAR)	930	-20	174	-3	21	1		
53	40	📶 DYLAN SCOTT/New Truck (Curb)	788	282	145	69	23	10		
45	41	📶 JASON ALDEAN/Small Town Small (Macon Music/Broken Bow)	777	92	119	15	6	1		
43	42	📶 MIDLAND/Sunrise Tells The Story (Big Machine)	766	57	111	17	12	1		
44	43	📶 CHASE RICE/If I Were Rock & Roll (Dack Janiels/Broken Bow)	738	31	140	4	12	0		
42	44	CHRIS STAPLETON/Nashville, TN (Mercury)	670	-40	67	-4	1	0		
47	45	CODY JINKS/Like A Hurricane (Late August)	657	-22	122	-3	9	0		
49	46	📶 PARMALEE/Take My Name (Stoney Creek)	631	54	81	6	4	0		
48	47	📶 LUKE COMBS/South On Ya (River House/Columbia)	630	10	63	1	1	0		
51	48	MITCHELL TENPENNY/Truth About You (Riser House/Columbia)	483	-61	52	-7	2	0		
Re-Enter	49	📶 INGRID ANDRESS w/SAM HUNT/Wishful Drinking (Warner/WEA)	481	71	49	8	2	0		
Re-Enter	50	📶 RANDALL KING/Record High (Warner/WMN)	477	72	102	16	10	1		
Debut	51	📶 FRANK RAY/Country'd Look Good On You (Stoney Creek)	464	63	104	6	8	0		
	50	52	MORGAN WADE/Wilder Days (Artisa)	460	-97	75	-15	14	0	
	55	53	WALKER HAYES/U Gurl (Monument)	440	-10	44	-1	1	0	
Debut	54	📶 OLD DOMINION/All I Know About Girls (Arista)	430	60	43	6	1	0		
Re-Enter	55	📶 DANIELLE BRADBERRY/Stop Draggin' Your Boots (Big Machine)	430	40	43	4	1	0		
Re-Enter	56	📶 JAMES ROBERT WEBB/Stealing Home (Bison Creek)	425	17	85	3	7	1		
Re-Enter	57	📶 NATE BARNES/You Ain't Pretty (Quartz Hill)	414	14	103	2	18	1		
	56	58	BAILEY JAMES/Finally Free (800 Mile)	413	-13	79	-2	6	0	
	58	59	SPENCER CRANDALL/My Person (---)	410	-10	41	-1	1	0	
	60	60	RUTHIE COLLINS/Hypocrite (Sidewalk/Curb)	408	-5	81	-1	13	0	

©2021 Country Aircheck™ All rights reserved. Sign up at [countryaircheck.com](http://countryaircheck.com) • Send news to [news@countryaircheck.com](mailto:news@countryaircheck.com) ✓=Top 5 Point Gainers



## Give to Get Your Shirt

Donate Now

