



ELI YOUNG BAND DUST

Celebrating Country Cares' 25th

Hard to believe it's been almost 25 years since **Randy Owen** challenged the Country industry to support **St. Jude Children's Research Hospital**. Since his appeal at CRS in 1989, Country has raised more than \$500 million for the fight against childhood cancer.

This weekend, more than 1,000 programmers, air talent, promotion directors, GMs, AEs, label and promotion execs and country artists gathered in Memphis for the annual seminar and to celebrate the 25th anniversary of Country Cares For St. Jude Kids. Festivities began Thursday with a program honoring those people and stations who have been instrumental in the success of Country Cares.

The first-ever Torch Bearer Awards were presented, with the first going to **WAMZ/Louisville** Dir./Production **David Lee**. He was the first person to incorporate a patient story into a song, something that is now a radiothon staple. His first creation was to The Bellamy Brothers' "Let Your Love Flow." WTCR/Huntington, WV GM **Judy Jennings** was the next honoree. Her contributions include asking why radiothons were only requesting one-time

donations rather than a monthly pledge. The practice of inviting listeners to become St. Jude partners began with her.

WNOE/New Orleans PD **Don Gosselin** accepted an award for the station, which pioneered a number of now commonplace radiothon practices – scheduling for Thursday and Friday, ending

(continued on page 10)



Randy Owen
with St. Jude Kids



Fantastic Four: A handful of Country Cares' originators receive the Founders Award during ceremonies in Memphis over the weekend. Pictured (l-r) are Morris Management's Greg Fowler, Country Aircheck's Lon Helton, CRB's Bill Mayne and radio vet Don Langford.

Kix Brooks: Playing The Part

Three years after the retirement of Brooks & Dunn, **Kix Brooks** remains one of the busiest guys in show business. He still makes music, hosts two nationally syndicated radio shows, owns and operates an award-winning vineyard and now has a serious eye on acting and movie-making. His made-for-DVD *A Country Christmas* was recently released at Walmart, as was his western *Ambush At Dark Canyon*. **Country Aircheck** recently asked him

©2014 Country Aircheck™ — All rights reserved. Sign up free at www.countryaircheck.com. Send news to news@countryaircheck.com

THE FOLLOW-UP TO THREE #1 HIT SINGLES!

CLICK HERE
TO LISTEN

DUST

CLICK HERE
TO LISTEN

OFFICIAL IMPACT DATE: FEBRUARY 3



1-26-14



about his film work, and where he finds time for it all.

"I was actually a theatre major in college, so I've always wanted to go there," Brooks says. "There have been a few opportunities along the way, but it wasn't like you could take a month off with Ronnie and I touring as hard as we did." When he and Dunn ended their music-making relationship, Brooks was offered a role in *Thriftstore Cowboy* alongside Barry Corbin and Cooper Huckabee. Director Dustin Rikert was impressed enough to offer Brooks the lead in *Ambush*. "I told him, 'You should get a real actor to do this!' But they asked me to read the script. And I remember sitting in bed with my wife Barbara and telling her, 'If I don't do this, I'll regret this for the rest of my life.' So I got in good shape and studied hard, and that's the cowboy movie that's coming out."

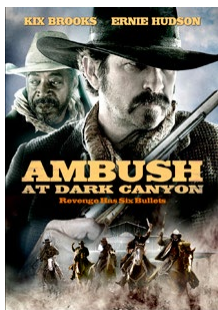


Kix Brooks

Brooks also handled the soundtrack. "Creatively it's about the coolest thing I've ever done," he says. "I got a bunch of people who were between record deals at the time like Randy Houser, Chris Stapleton and Leslie Satcher involved. It's fun to write songs not thinking about the radio and just stuff that fits the mood; songs about outlaws, redemption and revenge."

If you think this is just a fun side job, you're wrong. "I'm dead serious about it," he says. "In fact we just teamed with Group 1200 Media that owns Funimation, which has *Dragon Ball Z* and all those anime things. They also have Christian-based movie company Echo Light Studios, which [former U.S. Senator] Rick Santorum is CEO of. We're starting a new division that's kind of based on the country music fan, middle-America lifestyle. We're writing and acquiring scripts to start that division now."

Brooks has also found an enthusiastic partner in Cumulus, which distributes the Brooks-hosted *Kickin' It With Kix* and *American Country Countdown* shows. Brooks plans to take his shows on the road to *Ambush* premiere events, complete with autograph-signings and exclusive screenings. "We're very much talking about all these things together," he explains. "They've been very supportive in all these efforts and I think they see what I'm doing as a part of the future for Nash, and bringing some new TV, movie and video components to country music and the



PAGE THREE PIC

Backin' Black: Then-RCA artist Clint Black and KKBQ/Houston staffers after a listener meet-and-greet breakfast at Texas Land & Cattle in 1999. Pictured (l-r) are the label's Butch Waugh, the station's Tim Murphy, Black, KKBQ's Steve Giuttari (kneeling), and the label's Joe Galante, Mike Wilson and Adrian Michaels. Have your own last-century pics? Send to pagethreepic@countryaircheck.com.

country lifestyle in general."

See a trailer for *Ambush At Dark Canyon* [here](#); keep track of what Brooks is up to [here](#). —Russ Penwell

Luke's Kind Of Night

The snow and ice that hit Columbus, OH Thursday (1/16) didn't stop fans from coming out for the opening night of **Luke Bryan's** *That's My Kind of Night Tour*. **WCOL/Columbus** APD/Promotion Dir. **Chad Highland** says traffic may have made fans late, but opener **Cole Swindell** and **Lee Brice** got big crowd reactions. Bryan started the show with "That's My Kind of Night" on a full-sized black 4x4 that rose from the front of the stage encircled in flames. "It was definitely one of those 'I hope you were in your seats' kind of moments," Highland says.

That trick stage also revealed a fishing pier, which Bryan sat on for "Drink A Beer." Covers included Macklemore and Ryan Lewis' "Can't Hold Us" and a mashup of "I Don't Want



Luke Bryan

©2014 Country Aircheck™ — All rights reserved. Sign up free at www.countryaircheck.com. Send news to news@countryaircheck.com

SIT DOWN AND HOLD ON... RESEARCH ON THE MOVE!!

CALLOUT AMERICA'S #19 SONG OVERALL (UP FROM #26)

#10 Fav All Listeners 18+ and Up

#11 Core Females 25-44 (Up from #20)

#8 Core Female Favorite

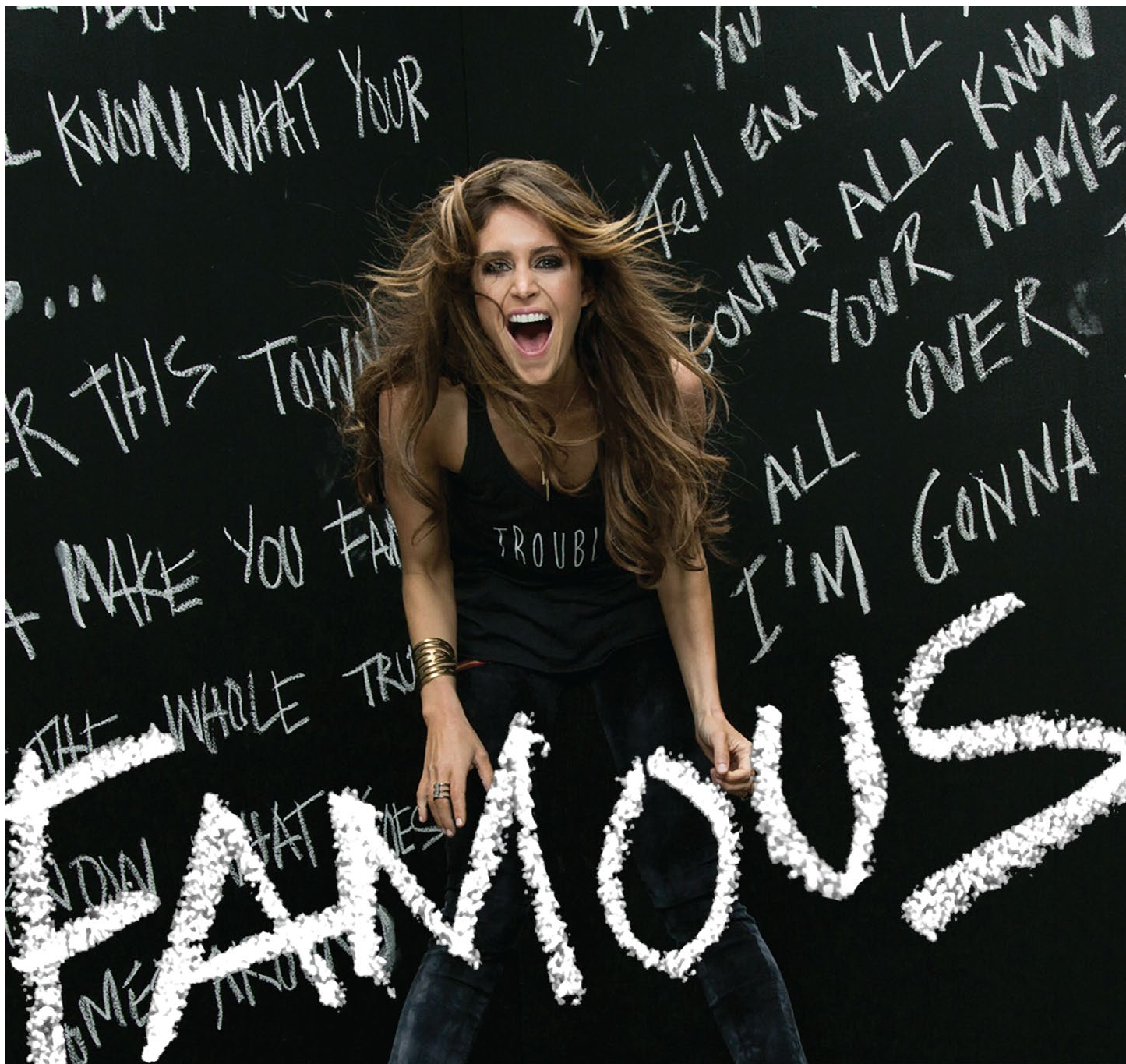
#9 Fav All Males

50K downloads!

LISTENER/FAN FEEDBACK CLICK HERE

TOBY KEITH SHUT UP AND HOLD ON

ALREADY TOP 15 at Callout with listeners in Indianapolis, Omaha, Columbia SC, Philadelphia, Pittsburgh, Providence RI, Rochester, Houston & Portland



KELLEIGH BANNEN



- | | | | | | | |
|------|------|------|------|------|------|------|
| WMZQ | KAJA | KRTY | KSOP | WSIX | WOGI | KUPL |
| KKWF | KWNR | WCOL | WGNE | WQHK | WTHT | WZZK |
| KHGE | KXLY | WCTQ | WJVC | WRBT | WUSH | WKML |
| KKIX | WCKT | WGAR | WPOR | WTGE | WWQM | |

THANK YOU, COUNTRY RADIO, FOR A GREAT FIRST WEEK!

This Night To End" with Taoli Cruz's "Dynamite." Bryan knew his audience, too. Not only was he wearing an OSU t-shirt for the show on the Ohio State campus and belting out "O-H" to get the crowd to respond, "I-O," he was also throwing out limited edition cans of Miller Lite from a cooler on stage. "Great performance by one of our format's biggest stars," Highland says. "It was just another great night for country music!" -Jess Wright

Riding Strait To Church

George Strait's *The Cowboy Rides Away Tour* galloped through Omaha Friday (1/17) and Kansas City Saturday (1/18). Strait set an attendance record for Omaha's CenturyLink Center and sold out in Kansas City, too. **KXKT/Omaha APD/MD Hoss Michaels** reports that **Eric Church** opened the show with a 14-song acoustic set. "It was amazing," Michaels says. The stage was set in the round with four microphones, and Michaels says Strait sang two songs at each mic so all sides of the venue could see him. "The setup made for a very intimate setting," agrees **KFKF/Kansas City** afternoon personality **Ed Walker**. At both shows, Church returned to the stage and performed "Cowboys Like Us" and "Easy Come, Easy Go" with Strait. Watch the Saturday night performances [here](#) and [here](#). "The crowd was singing as loud, if not louder than George when he performed 'Amarillo By Morning,'" Michaels says. Walker adds, "Across all age lines, too. Kids and grandparents were all there. It really felt like people understood the historic significance of the show." -Jess Wright



George Strait

Remembering Gaylon Christie

MTSU's **Paul Allen** sent this note after attending Country Radio Hall of Famer **Gaylon Christie's** memorial: "I got back from Texas and wanted to pass along how much the people of Killeen and surrounding cities came out to pay respects to Gaylon. At the visitation Friday night, it was a 30-minute wait to visit with his widow for a minute or two. Saturday's celebration of life had a huge crowd. The Hall of Fame should be proud of how he was remembered." Christie passed last week ([CAT 1/16](#)).

Chart Chat

Congrats to the **Zac Brown Band** and the **Southern Ground Artists** promotion crew - **Mara Sidweber, Chuck Swaney, Neda Tobin, Paul Williams** and **Clay Henderson** -

©2014 Country Aircheck™ — All rights reserved. Sign up free at www.countryaircheck.com. Send news to news@countryaircheck.com

OFF THE RECORD: NATALIE STOVALL



Natalie Stovall

HitShop's **Natalie Stovall** gives an industry spin on the artist interview. **I grew up** in Columbia, TN and we were constantly driving back and forth to Nashville when I was in a kid's show at the Opryland theme park. If mama was driving we were singing along to the Oldies station the whole hour, but if it was daddy we heard the Country stations. **The first time I heard myself on the radio** I was in my living room listening to

SiriusXM's The Highway. I screamed, then cried, then started tweeting, then texted all the guys. **I'll never forget** being the first female asked to sing "God Bless America" at the White House Press Correspondents' Dinner. I was singing acapella with the President on my right and the First Lady on my left. After I finished, President Bush put his hand out for a low five and said, "You nailed it!" **The most interesting road companion:** (name a regional driver and why he/she made an impression on you) We've never had a driver! James and I have done all the driving for years in our vans. And now that we have a Sprinter all of the guys in the band drive. We've always been pretty self contained, but I have a feeling that might change soon! **If I don't have hairspray** when I travel, I go insane. I have a lot of hair and no one wants to see what would happen if I didn't have any hairspray to tame it a little bit! Not even me. **I can't walk out of a truck stop without** chocolate in the form of a dark chocolate bar, Twix, Subway cookie or M&Ms. **There's no place like home, but** if I had to be stuck somewhere it would be San Diego. A few years in a row we got to play on a couple of the military bases and I absolutely fell in love with the city. The water is gorgeous and I would love to get the chance to spend a little more time there. **I call the best advice I ever got** the "Gospel of Charlie." A prominent artist asked Charlie Daniels, "How do you handle playing for a theater that holds 5,000 people when only 1,000 show up?" He said, "Son, I ain't playin' for the people that *didn't* show up." That's something I've always tried to live by. Whether there's five people or 15,000 people in the crowd - I will give it all I've got. I'm always in an arena in my own head anyway."

Thompson Square
Everything I Shouldn't Be Thinking About
TOP 10 bound
#4 RateTheMusic.com

TOP 15
HERE WE COME
#5 RateTheMusic.com
RANDY HOUSER
Goodnight Kiss

LINDSAY Ell
TRIPPIN' ON US
65
REPORTERS IN AND **NEW** WITH WWKA, WZZK, KTST, WOGI & KEGA

PARMALEE
CLOSE YOUR EYES
VOTE PARMALEE
ACM NEW ARTIST OF THE YEAR
MEDIUM ON THE HIGHWAY
NEW AT WUBL, KFRG
OFFICIAL IMPACT DATE:
MONDAY 2/3

Lookin' for
**THAT
GIRL**

**MOST
ADDED**

TIM MCGRAW

THANKS TO THE EARLY BELIEVERS

KAJA, KAWO, KCYE, KEEY, KEGA, KFGY, KKGO, KMDL, KSD, KSOP,
KSSN, KWNR, KZSN, PCCO, WAMZ, WBCT, WCOL, WDXB, WFUS,
WGNA, WIL, WMAD, WMZQ, WOGK, WPOR, WQIK, WSIX, WUBE,
WUSH, WUSJ, WWQM, WWYZ, WYCD, WYNK, WZZK

**SEE THE TELEVISION DEBUT OF THAT GIRL ON
SPORTS ILLUSTRATED SWIMSUIT: 50 YEARS OF BEAUTIFUL
MONDAY FEB 3 NBC 9PM EST**



IMPACTING NEXT MONDAY 1/27



RASCAL FLATTS

◀ REWIND



#1 MOST ADDED!
AGAIN!

117 First-Week Believers
CA/Mediabase 34
Billboard 32

on securing this week's No. 1 song with ZBB's "Sweet Annie." The single is the band's 11th chart-topper.



Zac Brown Band

News & Notes
KFKF/Kansas City

has added Sun Broadcast Group's daily feature *Nashville Music Minute*. More info [here](#).

Broadway Media has agreed to purchase **Simmons Media/Salt Lake City**, which includes Country **KEGA**.

Nashville's **Country Music Hall of Fame and Museum** set an all-time attendance record in 2013. Nearly 669,000 people visited the museum, more than at any time in its 46-year history. The landmark also saw a 25% increase in revenue. More [here](#).

The **Performance Racing Network** is celebrating 25 years of zMax *Racing Country*, a two-hour weekly show featuring country music and interviews with artists and NASCAR drivers. Country Radio Hall of Fame inductee and WKKT/Charlotte morning host **Paul Schadt** has hosted since 1996. More [here](#).

The **Country Music Hall of Fame and Museum** will honor Nashville Songwriters Hall of Fame member **Bob DiPiero** on Feb. 15 as part of their quarterly series *Poets and Prophets: Legendary Country Songwriters*. More [here](#).

ABC-TV's Nashville star **Charles Esten** will emcee the **Musicians Hall of Fame** awards show Jan. 28 at Nashville's Municipal Auditorium. **Barbara Mandrell** and **Mike Curb** are among inductees. More [here](#).

Newcomer **Ashleigh Lisset** has signed with **Alexander Music Marketing & Management** for management representation. More on her [here](#).

Artist News

Little Big Town's **Kimberly Schlapman** was honored as "Best Home Chef In A Series" for her **GAC** show *Kimberly's Simply Southern* at the *5th Annual Taste Awards* in Los Angeles last week (1/16). The third season of Schlapman's show will debut in the Spring.

MCA's **David Nail** will launch his spring headlining tour March 31 in Medina, OH. Newcomer **Sam Hunt** will open. Nail has also received gold certification from the RIAA for "Whatever She's Got."

Average Joes' **Moonshine Bandits** and **The Lacs** will partner for the 20-city *Country Gone Wild* tour, starting March 20 in Scottsdale, AZ. More [here](#) and [here](#).

Mercury's **Billy Currington** will headline *Music City July 4th*:

MY TUNES: MUSIC THAT SHAPED MY LIFE



Shelly Marx

Max Media's **WWBE/WYGL** PD/morning personality **Shelly Marx** discusses her most influential artists, concerts, songs and albums:

1. Barry Manilow/Copacabana: I used to sing and dance to it all the time as a little Shelly. Every New Year's Eve I would watch him on *Dick Clark's New Year's Rockin' Eve*. Then I had a chance to see him in concert. What a fabulous entertainer!

2. Richard Marx, Repeat Offender Tour: One of my favorite concerts. I got the tickets the minute they went on sale, waited in line for hours, and fought my way to the front. I remember there was a screen on each side of the stage and when they came down, he was behind the one right in front of me. I'll never forget it.

3. Little Texas, early '90s: One of my first country concerts and I got to meet them. I got to experience how great this format is and how personable these artists can be. Pretty exciting for me at 19!

4. Depeche Mode: Perfection ... such a clean sounding, perfect show. It was amazing! I walked in thinking the band was just okay. I walked out as a huge fan.

5. The Misfits: I'm such a fan of horror movies and music. To see them blend it all together and put on a great show, showed me how a band that doesn't have a lot of money can really make it happen.

• **A highly regarded song or album you've never heard:** Jay-Z, "Holy Grail."

• **An "important" piece of music you just don't get:** Anything by Phish or The Grateful Dead.

• **An album you played or listened to incessantly:** The Misfits, *Famous Monsters*. Every song is addictive, start to finish.

• **One obscure or non-country song everyone should listen to right now:** The Misfits, "20 Eyes." The first time I heard it I couldn't get it out of my head. That's how you know it's a good one!

• **One item in your music collection you'd rather not admit to enjoying:** Milli Vanilli, "Blame It On The Rain." I heard it the other day while driving. You have to admit, it's hard not to sing along.

©2014 Country Aircheck™ — All rights reserved. Sign up free at www.countryaircheck.com. Send news to news@countryaircheck.com



Ready Set Rollin' **MB 48***

CHASE RICE

On 60 Reporting Stations & Counting

On Tour Now with Billy Currington & Brett Eldredge

Summer Tour With Dierks Bentley

200,000 singles sold - Kickstarted by Sirius/XM



Zac Brown Band



SWEET ANNIE N°1!



"Thank you to all our friends at country radio for our 11th #1. Everyone at Southern Ground could not be more proud to have a home in Country Music."

Zac

NEW MUSIC COMING THIS YEAR

ZACBROWNBAND.COM

Southern
GROUND
ARTISTS

ROAR





Blues Before Sunrise: WSIX/Nashville, Premiere and St. Jude staffers take a stroll down Beale Street during last week's St. Jude meetings in Memphis. Pictured (back, l-r) are The Bobby Bones Show's Eddie Garcia, Premiere's Justin Cole and the station's Tyler Reese; front (l-r) are WSIX's Michael Bryan and Emily Bermann, Premiere's Bobby Bones, the station's Amy Paige, St. Jude's Jessica Turri, the station's Candace Walker Price and St. Jude's Jordan Turri.

Let Freedom Sing!, which also features **Ashley Monroe, Striking Matches** and the **Nashville Symphony Orchestra**. More [here](#).

Shania Twain will play the Calgary Stampede July 9.

Tickets go on sale Jan. 24 [here](#). More [here](#).

[Download](#) an acoustic version of RPME Records **Maggie Rose's** new single, "Looking Back Now," for the chance to win merchandise and possibly two tickets to the **49th Annual ACM Awards** April 6 in Las Vegas with hotel and airfare included.

The Week's Top Stories

©2014 Country Aircheck™ — All rights reserved. Sign up free at www.countryaircheck.com. Send news to news@countryaircheck.com

Full coverage at countryaircheck.com.

- **Nielsen Audio** Holiday PPM ratings were released. (1/21)
- More **Nielsen Audio** diary ratings for Fall 2013 were released. (1/13-17)
- Clear Channel **KTGX/Tulsa** PD **JJ Ryan** was named PD/afternoons for the company's new **KHLX/Sacramento**. (1/17)
- **UMG/Nashville** VP/Marketing **Tom Lord** joined **Red Light Management**. (1/16)
- **Big Machine Label Group** Dir./Finance **Brad Kash** was promoted to VP/ (1/15)
- **Blaster** SVP/Marketing & Artist Development **Derek Simon** rose to Pres. (1/14)
- **Nine North/Turnpike** VP/Promotion **Tom Moran** was promoted to SVP. (1/14)

Celebrating Country Cares' 25th

(continued from page 1)

at 7pm and leading the drive for Partners In Hope with monthly pledges via credit card.

Invited onstage next was anyone in attendance from stations that have participated in all 25 years of Country Cares radiothons. Literally filling the stage were folks from **WKML/Fayetteville; WQYK/Tampa; WAMZ/Louisville; WTCR/Huntington, WV; KHLS/Blytheville, AR; WGKX/Memphis; WIVK/Knoxville; WSIX/Nashville; WUSY/Chattanooga; WWMS/Tupelo, MS; KMDL/Lafayette, LA; KSON/San Diego; KYGO/Denver** and **WFMB/Springfield, IL**.

Finally, four of the original group that helped Randy Owen fulfill his vision and were in Memphis this weekend were honored with the Founders Award: **Greg Fowler, Bill Mayne, Don Langford** and me.

Danielle Bradbery
THE HEART OF DIXIE

TOP 15 & CLIMBING!!!

PREMIUM CHOICE GOES TO MEDIUM!!!

IT'S TIME TO CONVERT



CLICK HERE TO
WATCH THE VIDEO
EVERYONE IS
TALKING ABOUT!



THANK YOU FOR SUPPORTING
YOUAKEMEFELSAFE.COM

OUR NATION'S FIRST RESPONDERS

#PROJECTFEELSAFE

I'm a volunteer Firefighter... I just saw your video,
thank you for what your doing.
- James Sage

Thank you from an 11 year veteran firefighter.
True to life video.
- Michael Parkin

Many people don't understand what we go through
on a daily basis as first responders.
Thank you for shedding light on some of it.
- Byron McDonald

What an amazingly powerful and touching video.
As a former volunteer firefighter, I want to say thank YOU
for honoring those who serve and protect.
- Ed Carr

As a firefighter, Thank You from the bottom of
my heart for this song and video!!
- Justin Worley

Thank you for reminding me that I'm still human.
- Brian Farnsworth, Volunteer Firefighter

PROUDLY SUPPORTED BY:



WJVC/Long Island, KWOE/Denver, KUPL/Portland, WOGI/Pittsburgh, KAJA/San Antonio, WMIL/Milwaukee,
WNOE/New Orleans, KTST/Oklahoma City, WCKT/Ft. Myers, WGGY/Wilkes-Barre, WCTQ/Sarasota, WXYC/Wilmington,
WTHT/Portland, WGTY/York, WKXC/Augusta, WQHK/Ft. Wayne, WKML/Fayetteville, NC

“SAFE” VIDEO REACHING OVER 80 PEOPLE A MINUTE ON YOUTUBE.
THANK YOU FOR HELPING US TELL THIS STORY!

KATIE ARMIGER

*A national awareness campaign by Katie Armiger to honor the
brave men and women who keep us safe and the families who love them.*



Friday was dedicated to hospital tours during the day and the Lucky Duck Casino at night. St. Jude veterans had their own session, lunch and hospital visit, the highlight of which was a tour through the construction site housing the new Proton Radiation Therapy Center, the first in the world dedicated solely to children. It's expected to open next year. Casino night offered radio the chance to win play money to buy a wide variety of artist-oriented merchandise in the casino "store."

Saturday featured a number of panel discussions, a lunch for GMs and a presentation by Coach Bill Courtney, star of the 2011 Oscar winning documentary *Undeclared*.

The artist turnout for the weekend was stellar. Big Machine's **Rascal Flatts** led an artist contingent that included **American Young, Rodney Atkins, Blackjack Billy, Cadillac Three, Danielle Bradbery, Eli Young Band, Sara Evans, David Fanning, Brantley Gilbert, Lucy Hale, Krystal Keith, Jackie Lee, Scotty McCreery, Dylan Scott, Jerrod**

Niemann, Kellie Pickler, Cassadee Pope, Leah Turner and Austin Webb.

Their activities began with Owen's traditional artist welcome, after which almost all attended the opening reception. They toured the hospital on Friday, cutting radio liners and sitting before video cameras offering their hospital visit impressions. They also participated in a patient Art Carnival, working on simple art projects with St. Jude kids. Almost all of the artists also hung around for Casino Night.

The 25th anniversary celebration concluded Saturday night with dinner and a show hosted by Owen, with special guests **Jake Owen and Hunter Hayes**. This unscripted, informal evening featured hits by all three, and St. Jude's **Scarlett Krumrey, Teri Watson and Jackie Proffit** gave Owen a huge plaque featuring pictures taken with patients and artists over the past 25 years. The night – and the first 25 years of Country Cares – concluded with the traditional singing of "Angels Among Us." –Lon Helton



Quarter Club: Radio stations celebrating 25 years as St. Jude partners gather onstage in Memphis during the Country Cares For St. Jude Kids Seminar.

©2014 Country Aircheck™ — All rights reserved. Sign up free at www.countryaircheck.com. Send news to news@countryaircheck.com

the Cadillac Three

THE SOUTH

FEATURING
FLORIDA GEORGIA LINE,
DIERKS BENTLEY
& MIKE ELI

SINGLE SALES UP 80% AT iTUNES!
ALBUM SALES UP 120% AT iTUNES!
Huge Jump This Week
At BigChampagne!!!

CA/MB 49
BB 55*

CLICK HERE TO SEE TC3 PERFORM "THE SOUTH" ON ABC'S NASHVILLE

BIG MACHINE RECORDS

JOE NICHOLS

EVERYBODY
SAY

“YEAH”

50 IMPACT DATE
COMMITMENTS



RED BOW
RECORDS

The new single from the Critically Acclaimed Album *Cricket*s
Impacting **THIS** Monday, January 27th

Diary Fall Scoreboard

Here are Fall 2013 (9/12-12/4) **Nielsen Audio** diary ratings results from Jan. 14-21, listed alphabetically by market. Not all stations are subscribers and that's why you won't see rankings listed.

Legend: A "+" indicates a Classic Country outlet; a "^" designates co-owned Country stations in the metro; "t" indicates a tie; and a "*" indicates a station best in that statistic.

Station/City	12+ Share Last Book	12+ Share Fall '13
WOBB/Albany, GA	6.1 (4t)	6.2 (3t)
WKAK/Albany, GA	4.5 (5)	5.1 (4)
KBRJ/Anchorage, AL	4.9 (6t)	5.9 (5t)
KASH/Anchorage, AL	4.9(6t)	2.9 (10)
WWWW/Ann Arbor, MI	n/a	6.2 (1)
WNCY/Appleton, WI	17.8 (1)	13.8 (1)
WPKR/Appleton, WI	2.4 (8)	3.5 (6)
WPUR/Atlantic City, NJ	9.3 (1)	7.0 (3)
WKXC/Augusta, GA	10.3 (1)	10.8 (1)
WSCG/Augusta, GA	4.6 (8)	3.6 (8)
KYKR/Beaumont, TX	5.3 (4)	5.3 (4)
KAYD/Beaumont, TX	4.3 (7)	3.6 (8)
WBBI/Binghamton, NY	2.9 (4)	1.9 (4t)
WBWN/Bloomington, IL	10.5 (2)	7.1 (4t)
WIBL/Bloomington, IL	6.5 (3t)	7.8 (3)*
WQBE/Charleston, WV	18.4 (1)	19.2 (1)
WKWS/Charleston, WV	5.5 (4t)	7.8 (2)
KOLZ/Cheyenne, WI	5.5 (1)	5.2 (1)
KRYS/Corpus Christi, TX	6.7 (2)	8.5 (1)
WTVY/Dothan, AL	11.7 (2)	12.2 (1t)
WTWF/Erie, PA	7.8 (4)	9.1 (3)
WXTA/Erie, PA	6.8 (5)	8.3 (4)
KKNU/Eugene, OR	16.1 (1)	13.1 (1)
WKDQ/Evansville, IN	13.4 (2)	12.2 (2)
WLFW/Evansville, IN	3.0 (8t)	4.1 (7)
KKIX/Fayetteville, AR	14.9 (1)	16.2 (1)
KAMO/Fayetteville, AR	2.1 (9)	2.3 (8)
WKML/Fayetteville, NC	12.4 (1t)	12.3 (1)
KAFF/Flagstaff, AZ	4.5 (2)	4.9 (1)
WFBE/Flint, MI	8.5 (2)	6.7 (3)
WXFL/Florence, AL	14.3 (1)	14.2 (1)
KUAD/Ft. Collins, CO	6.5 (1)	6.5 (1)
KXBG/Ft. Collins, CO	2.7 (6t)	3.9 (4)*
WPCK/Green Bay, WI	2.6 (7)	2.6 (7)
WDGG/Huntington-Ashland, WV-KY	7.7 (4)	11.0 (2)
WTCR/Huntington-Ashland, WV-KY	9.1 (2)	9.6 (3)
WXBW/Huntington-Ashland WV-KY	7.0 (5)	4.5 (5t)
WUSJ/Jackson, MS	5.0 (5)	5.6 (5)
WMSI/Jackson, MS	4.4 (6)	6.1 (4)
KYKZ/Lake Charles, LA	13.4 (1)	11.3 (1)
WITL/Lansing, MI	13.5 (1)	12.8 (1)
WQTX/Lansing, MI	0.6 (10)	1.1 (10)
WALS/LaSalle, IL	7.6 (2)	7.0 (1t)
WGLC/LaSalle, IL	2.9 (5t)	2.9 (5)
WBUL/Lexington, KY	10.5 (1)	12.3 (1)
WLXX/Lexington, KY	5.1 (4t)	4.6 (6t)

Station/City	12+ Share Last Book	12+ Share Fall '13
KJCS/Lufkin, TX	6.2 (1)	6.3 (1)
WDEN/Macon, GA	9.8 (1)	9.3 (3)
WPCH/Macon, GA	1.6 (10)	1.4 (9t)
WHKR/Melbourne, FL	4.6 (6)	3.9 (5)
KATM/Modesto, CA	7.3 (1)	10.7 (1)
WLWI/Montgomery, AL	4.5 (8)	5.1 (6)
WBAM/Montgomery, AL	5.4 (5)	4.3 (7)
WKKW/Morgantown, WV	14.4 (1)	13.3 (1)
WNSH/New York (Morristown, NJ)	5.8 (5)	6.4 (2)*
WMDH/Muncie, IN	11.0 (1)	12.3 (2)
WCTK/Providence (New Bedford, MA)	8.8 (1)	9.2 (1)
KHAY/Oxnard, CA	4.8 (3)	5.3 (2)
KPLM/Palm Springs, CA	4.2 (7)	4.6 (6)
WXCL/Peoria, IL	8.3 (2)	8.7 (2)
WFYR/Peoria, IL	5.5 (6)	3.8 (8)
WLLR/Quad Cities, IA-IL	21.1 (1)	18.2 (1)
WIOV/Lancaster, PA (Reading, PA) ^	8.8 (2)	8.3 (2)
WZCY/Harrisburg, PA (Reading, PA) ^	.5 (7)	1.5 (3)
KBUL/Reno, NV	5.6 (4)	5.0 (5t)
KWFP/Reno, NV	5.0 (6)	4.2 (8)
WSLC/Roanoke, VA	11.8 (1)	11.4 (1)
WYYD/Roanoke, VA	5.7 (6)	5.5 (6)
WWFG/Salisbury, MD	7.8 (1)	8.2 (1)
WKHI/Salisbury, MD	2.6 (9)	1.0 (14)
WKTT/Salisbury, MD	3.3 (7)	3.3 (8)
KKJG/San Luis Obispo, CA	6.2 (2)	7.4 (2)
KSLY/San Luis Obispo, CA	1.9 (10)	1.5 (11)
KSNI/Santa Maria, CA	6.6 (3)	7.0 (2t)
KFGY/Santa Rosa, CA	4.3 (3)	5.2 (2t)
KTRY/Santa Rosa, CA	1.7 (17)	3.9 (4)*
WGCO/Savannah, GA+	2.4 (12)	4.3 (7)*
WJCL/Savannah, GA	5.1 (5)	4.6 (6)
WUBB/Savannah, GA	5.1 (6)	4.0 (8)
KRMD/Shreveport, LA	4.9 (3t)	5.9 (3)
KXKS/Shreveport, LA	4.6 (5)	4.4 (7)
WHFB/South Bend, IN	3.0 (3)	2.5 (3t)
KTTS/Springfield, MO	14.5 (1)	12.4 (1)
KSWF/Springfield, MO	4.0 (6)	5.9 (4)
KOMG/Springfield, MO+	5.9 (4)	3.3 (11)
WVOF/Tallahassee, FL	5.2 (4t)	4.2 (5t)
WTNT/Tallahassee, FL	3.5 (8)	5.8 (3t)
KNUE/Tyler, TX	7.4 (2)	7.7 (1t)
KATK/Victor Valley, CA	5.2 (2)	5.0 (2)
WQXK/Youngstown, OH	11.4 (1)	10.2 (1)
WDEZ/Wassau, WI	8.4 (2)	9.6 (2)
WYTE/Wassau, WI	4.7 (7)	5.7 (5t)

MAGGIE ROSE



listen
here!
~~~~~



WHO PULLED THE TRIGGER TODAY ON



# LOOKING BACK NOW

- KFRG • WMZQ • WPOC • KRTY • WOGI • KAJA
- WGTY • WMIL • WWGR • KCYE • KTEX • KPLM
- KUPL • WJVC • WTHT • WRBT • WZZK • WGGY
- KSOP • KHGE • WKML • WXCY • WUSH



| LW | TW | Artist/Title (Label)                                                 | Total Points +/- | Points Total | Plays +/- | Plays | Audience +/- | Aud    | Stations | ADDS |
|----|----|----------------------------------------------------------------------|------------------|--------------|-----------|-------|--------------|--------|----------|------|
| 2  | 1  | <b>ZAC BROWN BAND</b> /Sweet Annie (Atlantic/Southern Ground)        | 23173            | 181          | 7001      | 139   | 54.174       | -0.077 | 148      | 0    |
| 3  | 2  | <b>THE BAND PERRY</b> /Don't Let Me Be Lonely (Republic Nashville)   | 22923            | 1377         | 6767      | 320   | 54.453       | 2.644  | 148      | 0    |
| 6  | 3  | <b>LUKE BRYAN</b> /Drink A Beer (Capitol) ✓                          | 21734            | 1650         | 6529      | 483   | 51.841       | 3.536  | 148      | 0    |
| 8  | 4  | <b>COLE SWINDELL</b> /Chillin' It (Warner Bros./WMN)                 | 21067            | 1363         | 6161      | 419   | 50.756       | 3.038  | 147      | 1    |
| 1  | 5  | <b>FLORIDA GEORGIA LINE</b> /Stay (Republic Nashville)               | 21052            | -2759        | 6233      | -814  | 50.95        | -5.865 | 148      | 0    |
| 7  | 6  | <b>ERIC PASLAY</b> /Friday Night (EMI Nashville)                     | 20894            | 940          | 6046      | 321   | 50.15        | 1.816  | 148      | 0    |
| 9  | 7  | <b>DAVID NAIL</b> /Whatever She's Got (MCA)                          | 20882            | 1541         | 6065      | 378   | 51.413       | 3.633  | 148      | 0    |
| 11 | 8  | <b>JASON ALDEAN</b> /When She Says Baby (Broken Bow)                 | 17721            | 1480         | 5245      | 453   | 43.486       | 4.058  | 148      | 0    |
| 4  | 9  | <b>DARIUS RUCKER</b> /Radio (Capitol)                                | 17504            | -3689        | 5404      | -941  | 39.629       | -9.905 | 148      | 0    |
| 10 | 10 | <b>CASSADEE POPE</b> /Wasting All These Tears (Republic Nashville)   | 16389            | 41           | 4898      | -29   | 40.079       | 1.174  | 147      | 0    |
| 12 | 11 | <b>LADY ANTEBELLUM</b> /Compass (Capitol) ✓                          | 15994            | 1650         | 4722      | 470   | 38.154       | 3.615  | 148      | 0    |
| 13 | 12 | <b>JON PARDI</b> /Up All Night (Capitol)                             | 14732            | 689          | 4399      | 304   | 34.653       | 2.394  | 147      | 0    |
| 15 | 13 | <b>THOMPSON SQUARE</b> /Everything I Shouldn't Be... (Stoney Creek)  | 13077            | 919          | 3918      | 327   | 30.475       | 2.072  | 145      | 1    |
| 14 | 14 | <b>FRANKIE BALLARD</b> /Helluva Life (Warner Bros./WAR)              | 13054            | 443          | 3820      | 140   | 31.236       | 0.653  | 145      | 0    |
| 16 | 15 | <b>DANIELLE BRADBERRY</b> /The Heart Of Dixie (Republic/Big Machine) | 12429            | 818          | 3582      | 174   | 28.835       | 3.197  | 148      | 1    |
| 17 | 16 | <b>DIERKS BENTLEY</b> /I Hold On (Capitol)                           | 11608            | 811          | 3510      | 197   | 27.163       | 2.325  | 145      | 3    |
| 18 | 17 | <b>RANDY HOUSER</b> /Goodnight Kiss (Stoney Creek)                   | 11530            | 919          | 3479      | 248   | 26.556       | 2.084  | 147      | 2    |
| 19 | 18 | <b>SCOTTY MCCREERY</b> /See You Tonight (19/Interscope/Mercury)      | 11207            | 1142         | 3262      | 324   | 27.011       | 2.567  | 144      | 6    |
| 21 | 19 | <b>JERROD NIEMANN</b> /Drink To That All Night (Sea Gayle/Arista) ✓  | 9965             | 1655         | 2847      | 408   | 22.404       | 3.821  | 143      | 3    |
| 26 | 20 | <b>BLAKE SHELTON</b> /Doin' What She Likes (Warner Bros./WMN) ✓      | 9207             | 3099         | 2757      | 898   | 20.944       | 8.136  | 145      | 24   |
| 20 | 21 | <b>DAN + SHAY</b> /19 You + Me (Warner Bros./WAR)                    | 9190             | 312          | 2655      | 148   | 22.061       | 0.801  | 127      | 4    |
| 23 | 22 | <b>BRETT ELDREDGE</b> /Beat Of The Music (Atlantic/WMN)              | 7628             | 713          | 2229      | 206   | 17.424       | 1.484  | 129      | 2    |
| 22 | 23 | <b>DUSTIN LYNCH</b> /Wild In Your Smile (Broken Bow)                 | 7593             | 229          | 2280      | 20    | 16.429       | 1.078  | 140      | 1    |
| 24 | 24 | <b>JUSTIN MOORE</b> /Lettin' The Night Roll (Valory)                 | 6700             | 445          | 2121      | 154   | 15.56        | 1.086  | 124      | 0    |
| 29 | 25 | <b>BRAD PAISLEY</b> /The Mona Lisa (Arista)                          | 6573             | 1163         | 1984      | 322   | 15.315       | 4.259  | 134      | 9    |

©2014 Country Aircheck™ — All rights reserved. Sign up free at [www.countryaircheck.com](http://www.countryaircheck.com). Send news to [news@countryaircheck.com](mailto:news@countryaircheck.com)



# WHO I AM WITH YOU

## 51 FIRST WEEK STATIONS!

“This song makes my ovaries turn!” -Bree Wagner, MD/APD, KAJA/San Antonio

# CHRIS YOUNG

[CLICK HERE TO LISTEN](#)



THE NEW FACE OF COUNTRY MUSIC IN 2014

# ROBBY JOHNSON

NEW SINGLE

south of me

TOP 50 IN ONLY 5 WEEKS

CLICK HERE TO WATCH THE  
"SOUTH OF ME"  
MUSIC VIDEO!

OVER 2.7 MILLION VIEWS!

"Simply put, a star on the rise...."

- Chuck Dauphin

"Sultry and simmering. [South of Me] conjures memories  
of a feverish summer romance with a simply dreamy production."

- Robert K. Oermann / MUSIC ROW

NOW ON  
CMT *pure*  
country

A STAR IN THE MAKING BECAUSE OF YOU  
THANK Y'ALL COUNTRY RADIO!

KAIR (ATCHISON, KS)  
KBXB (SIKESTON, MO)  
KCJC (RUSSELLVILLE, AR)  
KCNV (CONWAY, AR)  
KDKD (CLINTON, MO)  
KDOL (LIVINGSTON, TX)  
KFAV (WARRENTON, MO)  
KFTX (CORPUS CHRISTI, TX)  
KHBZ (HARRISON, AR)  
KKOW (PITTSBURGH, KS)  
KLMJ (HAMPTON, IA)  
KREK (BRISTOW, OK)  
KRG1 (GRAND ISLAND, NE)  
KSMA (MASON CITY, IA)  
KVOM (MORRILTON, AR)

KWHW (ALTUS, OK)  
KXIA (MARSHALLTOWN, IA)  
KXOX (SWEETWATER, TX)  
KYTN (UNION CITY, TN)  
KYYK (PALESTINE, TX)  
KZZY (DEVILS LAKE, ND)  
RENEGADE RADIO NASHVILLE  
(NASHVILLE, TN)  
WATZ (ALPENA, MI)  
WBYZ (BAXLEY, GA)  
WDHR (PIKEVILLE, KY)  
WDKN (DICKSON, TN)  
WDNB (LIBERTY, NY)  
WEIO (HUNTINGDON, TN)  
WEZJ (WILLIAMSBURG, KY)

WGGC (BOWLING GREEN, KY)  
WIFE (CONNERSVILLE, IN)  
WJMQ (SHAWANO, WI)  
WJNR (IRON MOUNTAIN, MI)  
WKBQ (COVINGTON, TN)  
WMCI (MATTOON, IL)  
WMEV (MARION, VA)  
WOKA (DOUGLAS, GA)  
WQPC (PRAIRIE DU CHIEN, WI)  
WTCM (TRAVERSE CITY, MI)  
WTHO (THOMSON, GA)  
WUPY (ONTONAGON, MI)  
WWBE (SELINGROVE, PA)  
WZZS (ZOLFO SPRINGS, FL)

WWW.ROBBY-JOHNSON.COM

| LW              | TW | Artist/Title (Label)                                       | Total Points | +/- Points  | Total Plays | +/- Plays  | Audience     | +/- Aud       | Stations   | ADDS      |
|-----------------|----|------------------------------------------------------------|--------------|-------------|-------------|------------|--------------|---------------|------------|-----------|
| 25              | 26 | KIP MOORE/Young Love (MCA)                                 | 6394         | 193         | 1867        | 101        | 14.309       | 0.652         | 129        | 5         |
| 34              | 27 | ERIC CHURCH/Give Me Back My Hometown (EMI Nashville) ✓     | 6370         | 2761        | 1827        | 756        | 13.616       | 5.955         | 119        | 14        |
| 27              | 28 | CRAIG MORGAN/Wake Up Lovin' You (Black River)              | 5946         | 91          | 1848        | 39         | 11.69        | 0.395         | 133        | 1         |
| 28              | 29 | THOMAS RHETT/Get Me Some Of That (Valory)                  | 5864         | 448         | 1744        | 146        | 13.659       | 1.46          | 116        | 8         |
| 30              | 30 | JOSH THOMPSON/Cold Beer With Your ... (Show Dog-Universal) | 5329         | -47         | 1519        | -20        | 11.671       | -0.117        | 106        | 2         |
| 36              | 31 | BRANTLEY GILBERT/Bottoms Up (Valory)                       | 4845         | 1549        | 1457        | 436        | 9.342        | 2.565         | 113        | 14        |
| 31              | 32 | TYLER FARR/Whiskey In My Water (Columbia)                  | 4332         | 131         | 1266        | 74         | 7.5          | 0.285         | 125        | 15        |
| 32              | 33 | SARA EVANS/Slow Me Down (RCA)                              | 3813         | -43         | 1130        | -8         | 5.498        | -0.198        | 122        | 1         |
| <b>AIRBORNE</b> |    | <b>RASCAL FLATTS/Rewind (Big Machine)</b>                  | <b>3791</b>  | <b>-35</b>  | <b>1073</b> | <b>-69</b> | <b>7.248</b> | <b>-2.603</b> | <b>117</b> | <b>49</b> |
| 35              | 35 | LITTLE BIG TOWN/Sober (Capitol)                            | 3163         | -134        | 991         | -33        | 5.268        | -0.244        | 110        | 0         |
| 37              | 36 | LEAH TURNER/Take The Keys (Columbia)                       | 2973         | 1           | 922         | 2          | 4.265        | 0.078         | 107        | 0         |
| <b>AIRBORNE</b> |    | <b>KEITH URBAN/Cop Car (Capitol)</b>                       | <b>2848</b>  | <b>1332</b> | <b>856</b>  | <b>407</b> | <b>5.918</b> | <b>2.559</b>  | <b>99</b>  | <b>15</b> |
| 39              | 38 | AUSTIN WEBB/Slip On By (Streamsound)                       | 2706         | 55          | 878         | 9          | 4.217        | 0.205         | 92         | 0         |
| 38              | 39 | SHERYL CROW/Callin' Me When I'm Lonely (Warner Bros./WMN)  | 2671         | -19         | 736         | 27         | 3.942        | -0.475        | 86         | 2         |
| 40              | 40 | BILLY CURRINGTON/We Are Tonight (Mercury)                  | 2532         | 270         | 785         | 76         | 4.606        | 0.667         | 84         | 8         |
| 41              | 41 | GEORGE STRAIT/I Got A Car (MCA)                            | 2311         | 73          | 701         | 38         | 4.996        | 0.161         | 83         | 5         |
| 42              | 42 | GARY ALLAN/It Ain't The Whiskey (MCA)                      | 2172         | -41         | 771         | 11         | 3.237        | -0.35         | 96         | 3         |
| 43              | 43 | CHARLIE WORSHAM/Want Me Too (Warner Bros./WAR)             | 2002         | -80         | 584         | 22         | 4.694        | -0.098        | 70         | 7         |
| 45              | 44 | AMERICAN YOUNG/Love Is War (Curb)                          | 1732         | 17          | 599         | 11         | 1.792        | 0.168         | 93         | 3         |
| 46              | 45 | WILL HOGE/Strong (Prospector/Crescendo)                    | 1724         | 11          | 610         | 13         | 2.255        | 0.049         | 73         | 0         |
| 48              | 46 | CRAIG CAMPBELL/Keep Them Kisses Comin' (Bigger Picture)    | 1705         | 157         | 541         | 44         | 4.061        | 0.646         | 61         | 2         |
| 47              | 47 | KELLIE PICKLER/Little Bit Gypsy (Black River)              | 1611         | 42          | 531         | 4          | 3.052        | -0.065        | 67         | 0         |
| 50              | 48 | CHASE RICE/Ready Set Roll (Dack Janiels/RPME)              | 1461         | 53          | 454         | 26         | 2.042        | -0.071        | 60         | 2         |
| Debut           | 49 | THE CADILLAC THREE & FRIENDS/The South (Big Machine)       | 1382         | 77          | 472         | 26         | 1.498        | 0.071         | 65         | 5         |
| Debut           | 50 | KACEY MUSGRAVES/Follow Your Arrow (Mercury)                | 1377         | 149         | 414         | 69         | 2.437        | 0.447         | 51         | 0         |

©2014 Country Aircheck™ — All rights reserved. Sign up free at [www.countryaircheck.com](http://www.countryaircheck.com). Send news to [news@countryaircheck.com](mailto:news@countryaircheck.com)

**CHUCK WICKS**

“Ever wonder what hopeful sounds like? Listen to Chuck Wicks’ new single and you’ll have your answer.”  
-Gotcountryonline.com

**Us Again**

**IMPACTING NOW**

**BLASTER RECORDS**

**Country Aircheck Add Leaders**

|                                                               | Adds |
|---------------------------------------------------------------|------|
| <b>RASCAL FLATTS</b> /Rewind (Big Machine)                    | 49   |
| <b>TIM MCGRAW</b> /Lookin' For That Girl (Big Machine)        | 34   |
| <b>CHRIS YOUNG</b> /Who I Am With You (RCA)                   | 30   |
| <b>KELLEIGH BANNEN</b> /Famous (EMI Nashville)                | 26   |
| <b>BLAKE SHELTON</b> /Doin' What She Likes (Warner Bros./WMN) | 24   |
| <b>MAGGIE ROSE</b> /Looking Back Now (RPME)                   | 21   |
| <b>KATIE ARMIGER</b> /Safe (Cold River)                       | 16   |
| <b>KEITH URBAN</b> /Cop Car (Capitol)                         | 15   |
| <b>TYLER FARR</b> /Whiskey In My Water (Columbia)             | 15   |
| <b>BRANTLEY GILBERT</b> /Bottoms Up (Valory)                  | 14   |
| <b>ERIC CHURCH</b> /Give Me Back My Hometown (EMI Nashville)  | 14   |

**Country Aircheck Top Point Gainers**

|                                                                    |      |   |
|--------------------------------------------------------------------|------|---|
| <b>BLAKE SHELTON</b> /Doin' What She Likes (Warner Bros./WMN)      | 3099 | ✓ |
| <b>ERIC CHURCH</b> /Give Me Back My Hometown (EMI Nashville)       | 2761 | ✓ |
| <b>JERROD NIEMANN</b> /Drink To That All Night (Sea Gayle/Arista)  | 1655 | ✓ |
| <b>LUKE BRYAN</b> /Drink A Beer (Capitol)                          | 1650 | ✓ |
| <b>LADY ANTEBELLUM</b> /Compass (Capitol)                          | 1650 | ✓ |
| <b>BRANTLEY GILBERT</b> /Bottoms Up (Valory)                       | 1549 |   |
| <b>DAVID NAIL</b> /Whatever She's Got (MCA)                        | 1541 |   |
| <b>JASON ALDEAN</b> /When She Says Baby (Broken Bow)               | 1480 |   |
| <b>THE BAND PERRY</b> /Don't Let Me Be Lonely (Republic Nashville) | 1377 |   |
| <b>COLE SWINDELL</b> /Chillin' It (Warner Bros./WMN)               | 1363 |   |

**Country Aircheck Top Spin Gainers**

|                                                                   |     |
|-------------------------------------------------------------------|-----|
| <b>BLAKE SHELTON</b> /Doin' What She Likes (Warner Bros./WMN)     | 898 |
| <b>ERIC CHURCH</b> /Give Me Back My Hometown (EMI Nashville)      | 756 |
| <b>LUKE BRYAN</b> /Drink A Beer (Capitol)                         | 483 |
| <b>LADY ANTEBELLUM</b> /Compass (Capitol)                         | 470 |
| <b>JASON ALDEAN</b> /When She Says Baby (Broken Bow)              | 453 |
| <b>BRANTLEY GILBERT</b> /Bottoms Up (Valory)                      | 436 |
| <b>COLE SWINDELL</b> /Chillin' It (Warner Bros./WMN)              | 419 |
| <b>JERROD NIEMANN</b> /Drink To That All Night (Sea Gayle/Arista) | 408 |
| <b>KEITH URBAN</b> /Cop Car (Capitol)                             | 407 |
| <b>DAVID NAIL</b> /Whatever She's Got (MCA)                       | 378 |

**Activator Top Point Gainers**

|                                                                  |      |   |
|------------------------------------------------------------------|------|---|
| <b>ERIC CHURCH</b> /Give Me Back My Hometown (EMI Nashville)     | 1193 | ✓ |
| <b>BLAKE SHELTON</b> /Doin' What She Likes (Warner Bros./WMN)    | 1006 | ✓ |
| <b>LADY ANTEBELLUM</b> /Compass (Capitol)                        | 704  | ✓ |
| <b>THOMPSON SQUARE</b> /Everything I Shouldn't... (Stoney Creek) | 592  | ✓ |
| <b>COLE SWINDELL</b> /Chillin' It (Warner Bros./WMN)             | 585  | ✓ |
| <b>FRANKIE BALLARD</b> /Helluva Life (Warner Bros./WAR)          | 499  |   |
| <b>LUKE BRYAN</b> /Drink A Beer (Capitol)                        | 495  |   |
| <b>JASON ALDEAN</b> /When She Says Baby (Broken Bow)             | 471  |   |
| <b>SCOTTY MCCREERY</b> /See You Tonight (19/Interscope/Mercury)  | 466  |   |
| <b>TYLER FARR</b> /Whiskey In My Water (Columbia)                | 466  |   |

**Activator Top Spin Gainers**

|                                                                   |     |
|-------------------------------------------------------------------|-----|
| <b>ERIC CHURCH</b> /Give Me Back My Hometown (EMI Nashville)      | 283 |
| <b>BLAKE SHELTON</b> /Doin' What She Likes (Warner Bros./WMN)     | 215 |
| <b>LADY ANTEBELLUM</b> /Compass (Capitol)                         | 157 |
| <b>COLE SWINDELL</b> /Chillin' It (Warner Bros./WMN)              | 124 |
| <b>THOMPSON SQUARE</b> /Everything I Shouldn't... (Stoney Creek)  | 120 |
| <b>JASON ALDEAN</b> /When She Says Baby (Broken Bow)              | 118 |
| <b>FRANKIE BALLARD</b> /Helluva Life (Warner Bros./WAR)           | 116 |
| <b>LUKE BRYAN</b> /Drink A Beer (Capitol)                         | 115 |
| <b>DANIELLE BRADBERRY</b> /The Heart Of... (Republic/Big Machine) | 115 |
| <b>BRETT ELDRIDGE</b> /Beat Of The Music (Atlantic/WMN)           | 108 |

**Country Aircheck Top Recurrents**

|                                                              | Points |
|--------------------------------------------------------------|--------|
| <b>ELI YOUNG BAND</b> /Drunk Last Night (Republic Nashville) | 16108  |
| <b>PARMALEE</b> /Carolina (Stoney Creek)                     | 11307  |
| <b>KEITH URBAN &amp; MIRAND...</b> /We Were Us (RCA/Capitol) | 10123  |
| <b>THOMAS RHETT</b> /It Goes Like This (Valory)              | 9821   |
| <b>BLAKE SHELTON</b> /Mine Would Be You (Warner Bros./WMN)   | 8434   |
| <b>JASON ALDEAN</b> /Night Train (Broken Bow)                | 8147   |
| <b>JOE NICHOLS</b> /Sunny And 75 (Red Bow)                   | 7964   |
| <b>LUKE BRYAN</b> /That's My Kind Of Night (Capitol)         | 7404   |
| <b>TIM MCGRAW</b> /Southern Girl (Big Machine)               | 6962   |
| <b>RANDY HOUSER</b> /Runnin' Outta Moonlight (Stoney Creek)  | 6349   |

©2014 Country Aircheck™ — All rights reserved. Sign up free at [www.countryaircheck.com](http://www.countryaircheck.com). Send news to [news@countryaircheck.com](mailto:news@countryaircheck.com)

**TYLER FARR**  
**WHISKEY IN MY WATER**  
**#8 MOST ADDED**  
**CA/MB 32 BB 33\***

THANK YOU COUNTRY RADIO! NEW FACES OF COUNTRY MUSIC 2014 THANK YOU COUNTRY RADIO!

COLUMBIA NASHVILLE

**COUNTRY AIRCHECK ACTIVITY**

**WILL HOGE/Strong (Prospector/Crescendo)**

Moves 46-45\*  
1,724 points, 610 spins  
No adds

**CRAIG CAMPBELL/Keep Them Kisses Comin' (Bigger Picture)**

Moves 48-46\*  
1,705 points, 541 spins  
4 adds: **KWOF, WRNS**

**KELLIE PICKLER/Little Bit Gypsy (Black River)**

Remains at 47\*  
1,611 points, 531 spins  
No adds

**CHASE RICE/Ready Set Roll (Dack Janiels/RPME)**

Moves 50-48\*  
1,461 points, 454 spins  
2 adds: **KRTY, WLHK**

**THE CADILLAC THREE & FRIENDS/The South (Big Machine)**

Debut at 49\*  
1,382 points, 472 spins  
5 adds: **KHEY, WQYK, WWKA\*, WYNK, WZZK**

**KACEY MUSGRAVES/Follow Your Arrow (Mercury)**

Re-entry at 50\*  
1,377 points, 414 spins  
No adds

**LINDSAY ELL/Trippin' On Us (Stoney Creek)**

1,275 points, 386 spins  
5 adds: **KEGA, KTST, WOGI, WWKA\*, WZZK**

**BROTHERS OSBORNE/Let's Go There (EMI Nashville)**

1,266 points, 422 spins  
No adds

**TOBY KEITH/Shut Up And Hold On (Show Dog-Universal)**

1,190 points, 373 spins  
4 adds: **KBEQ, KWOF, WGGY, WMAD**

**ADD DATES**

**JANUARY 27**

**CHUCK WICKS/Us Again (Blaster)**  
**JOE NICHOLS/Yeah (Red Bow)**

**FEBRUARY 3**

**DARIUS RUCKER/Miss You (Capitol)**  
**ELI YOUNG BAND/Dust (Republic Nashville)**  
**JAKE OWEN/Beachin' (RCA)**  
**LUCY HALE/You Sound Good To Me (DMG Nashville/ Bigger Picture)**  
**NATALIE STOVALL AND THE DRIVE/Baby Come On With It (HitShop)**  
**PARMALEE/Close Your Eyes (Stoney Creek)**

**FEBRUARY 10**

None listed

**CHECK OUT 1/21**

- Jan. 28 **North 40** *Sing Your Own Song* (Rhymetown)
- Feb. 4 **Eric Paslay** *Eric Paslay* (EMI)
- Feb. 4 **Moonshine Bandits** *Calicountry* (Average Joes/Suburban Noize)
- Feb. 11 **Eric Church** *The Outsiders* (EMI)
- Feb. 11 **Frankie Ballard** *Sunshine & Whiskey* (Warner Bros.)
- Feb. 18 **Cole Swindell** *Cole Swindell* (Warner Bros.)
- Feb. 25 **Dierks Bentley** *Riser* (UMG)
- Mar. 4 **Martina McBride** *Everlasting* (Blackbird/Kobalt)
- Mar. 4 **David Nail** *I'm A Fire* (MCA)
- Mar. 4 **Eli Young Band** *10,000 Towns* (Republic Nashville)

Album release info to [news@countryaircheck.com](mailto:news@countryaircheck.com).

©2014 Country Aircheck™ — All rights reserved. Sign up free at [www.countryaircheck.com](http://www.countryaircheck.com). Send news to [news@countryaircheck.com](mailto:news@countryaircheck.com)



*Samantha Landrum*  
**"WHAT IF"**

CLICK HERE TO SEE THE VIDEO

**NEWS FLASH!**

**DEBUT...BILLBOARD INDICATOR...#57!**

AVAILABLE NOW ON ITUNES AND AMAZON




| LW | TW | Artist/Title (Label)                                            | Points | +/- | Points | Plays | +/- | Plays | Stations | Adds |
|----|----|-----------------------------------------------------------------|--------|-----|--------|-------|-----|-------|----------|------|
| 3  | 1  | 📶 LUKE BRYAN/Drink A Beer (Capitol)                             | 8473   |     | 495    | 1955  |     | 115   | 50       | 0    |
| 1  | 2  | ZAC BROWN BAND/Sweet Annie (Atlantic/Southern Ground)           | 8425   |     | -460   | 1877  |     | -101  | 48       | 0    |
| 4  | 3  | 📶 THE BAND PERRY/Don't Let Me Be Lonely (Republic Nashville)    | 7838   |     | 320    | 1813  |     | 59    | 47       | 0    |
| 2  | 4  | FLORIDA GEORGIA LINE/Stay (Republic Nashville)                  | 7522   |     | -623   | 1713  |     | -155  | 45       | 0    |
| 7  | 5  | 📶 ERIC PASLAY/Friday Night (EMI Nashville)                      | 7463   |     | 432    | 1743  |     | 105   | 49       | 0    |
| 8  | 6  | 📶 COLE SWINDELL/Chillin' It (Warner Bros./WMN) ✓                | 7339   |     | 585    | 1683  |     | 124   | 50       | 0    |
| 5  | 7  | DARIUS RUCKER/Radio (Capitol)                                   | 7020   |     | -434   | 1605  |     | -82   | 46       | 0    |
| 9  | 8  | 📶 DAVID NAIL/Whatever She's Got (MCA)                           | 6881   |     | 173    | 1595  |     | 61    | 49       | 0    |
| 10 | 9  | 📶 CASSADEE POPE/Wasting All These Tears (Republic Nashville)    | 6718   |     | 443    | 1560  |     | 103   | 48       | 0    |
| 11 | 10 | 📶 LADY ANTEBELLUM/Compass (Capitol) ✓                           | 6584   |     | 704    | 1505  |     | 157   | 50       | 0    |
| 12 | 11 | 📶 JASON ALDEAN/When She Says Baby (Broken Bow)                  | 6282   |     | 471    | 1459  |     | 118   | 50       | 0    |
| 13 | 12 | 📶 JON PARDI/Up All Night (Capitol)                              | 5642   |     | 346    | 1256  |     | 79    | 49       | 0    |
| 15 | 13 | 📶 DANIELLE BRADBERRY/The Heart Of Dixie (Republic/Big Machine)  | 5257   |     | 325    | 1173  |     | 115   | 50       | 0    |
| 14 | 14 | 📶 DIERKS BENTLEY/I Hold On (Capitol)                            | 5214   |     | 55     | 1230  |     | 18    | 49       | 0    |
| 16 | 15 | 📶 FRANKIE BALLARD/Helluva Life (Warner Bros./WAR)               | 4671   |     | 499    | 1040  |     | 116   | 49       | 1    |
| 18 | 16 | 📶 THOMPSON SQUARE/Everything I Shouldn't Be... (Stoney Creek) ✓ | 4586   |     | 592    | 966   |     | 120   | 44       | 1    |
| 17 | 17 | 📶 RANDY HOUSER/Goodnight Kiss (Stoney Creek)                    | 4375   |     | 296    | 994   |     | 51    | 46       | 1    |
| 19 | 18 | 📶 SCOTTY MCCREERY/See You Tonight (19/Interscope/Mercury)       | 4238   |     | 466    | 929   |     | 92    | 45       | 0    |
| 20 | 19 | 📶 JERROD NIEMANN/Drink To That All Night (SeaGayle/Arista)      | 3752   |     | 370    | 901   |     | 89    | 49       | 0    |
| 24 | 20 | 📶 BLAKE SHELTON/Doin' What She Likes (Warner Bros./WMN) ✓       | 3421   |     | 1006   | 789   |     | 215   | 47       | 3    |
| 21 | 21 | 📶 BRAD PAISLEY/The Mona Lisa (Arista)                           | 3354   |     | 352    | 714   |     | 63    | 46       | 0    |
| 22 | 22 | 📶 JUSTIN MOORE/Lettin' The Night Roll (Valory)                  | 3019   |     | 240    | 654   |     | 47    | 43       | 1    |
| 23 | 23 | 📶 DAN + SHAY/19 You + Me (Warner Bros./WAR)                     | 2859   |     | 158    | 609   |     | 32    | 43       | 1    |
| 25 | 24 | 📶 BRETT ELDRIDGE/Beat Of The Music (Atlantic/WMN)               | 2648   |     | 343    | 642   |     | 108   | 43       | 3    |
| 26 | 25 | 📶 KIP MOORE/Young Love (MCA)                                    | 2460   |     | 325    | 540   |     | 68    | 42       | 0    |
| 35 | 26 | 📶 ERIC CHURCH/Give Me Back My Hometown (EMI Nashville) ✓        | 2314   |     | 1193   | 547   |     | 283   | 41       | 4    |
| 29 | 27 | 📶 THOMAS RHETT/Get Me Some Of That (Valory)                     | 2217   |     | 281    | 504   |     | 61    | 39       | 1    |
| 27 | 28 | 📶 DUSTIN LYNCH/Wild In Your Smile (Broken Bow)                  | 2159   |     | 52     | 460   |     | 10    | 35       | 0    |
| 28 | 29 | 📶 CRAIG MORGAN/Wake Up Lovin' You (Black River)                 | 2125   |     | 77     | 436   |     | 12    | 40       | 1    |
| 31 | 30 | GEORGE STRAIT/I Got A Car (MCA)                                 | 1789   |     | -15    | 408   |     | -2    | 27       | 2    |

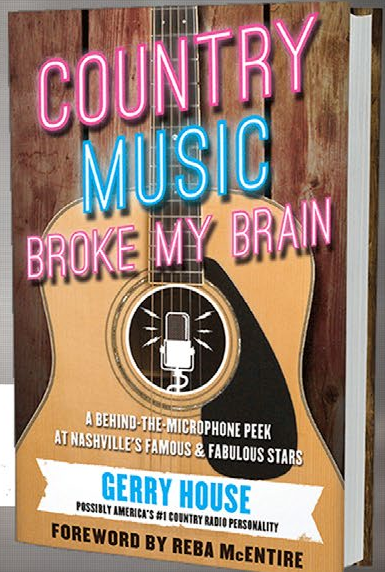
©2014 Country Aircheck™ — All rights reserved. ✓=Top 5 point gainers. Sign up free at [www.countryaircheck.com](http://www.countryaircheck.com)

# COUNTRY MUSIC BROKE MY BRAIN

BY GERRY HOUSE



GERRY HOUSE



**COUNTRY MUSIC BROKE MY BRAIN**

A BEHIND-THE-MICROPHONE PEEK AT NASHVILLE'S FAMOUS & FABULOUS STARS

**GERRY HOUSE**

POSSIBLY AMERICA'S #1 COUNTRY RADIO PERSONALITY

FOREWORD BY REBA McENTIRE

**PREORDER NOW**

[CLICK HERE](#)

| LW    | TW | Artist/Title (Label)                                                      | Points | +/- Points | Plays | +/- Plays | Stations | Adds |
|-------|----|---------------------------------------------------------------------------|--------|------------|-------|-----------|----------|------|
| 32    | 31 | 📶 <b>LITTLE BIG TOWN</b> /Sober (Capitol)                                 | 1774   | 21         | 350   | -13       | 27       | 0    |
| 34    | 32 | 📶 <b>TYLER FARR</b> /Whiskey In My Water (Columbia)                       | 1738   | 466        | 395   | 96        | 34       | 2    |
| 30    | 33 | <b>JOSH THOMPSON</b> /Cold Beer With Your Name On It (Show Dog-Universal) | 1736   | -200       | 387   | -21       | 35       | 0    |
| 36    | 34 | 📶 <b>KEITH URBAN</b> /Cop Car (Capitol)                                   | 1332   | 216        | 342   | 70        | 27       | 4    |
| 33    | 35 | <b>SARA EVANS</b> /Slow Me Down (RCA)                                     | 1222   | -55        | 259   | -11       | 28       | 0    |
| 37    | 36 | 📶 <b>RASCAL FLATTS</b> /Rewind (Big Machine)                              | 1215   | 265        | 276   | 60        | 36       | 12   |
| 39    | 37 | 📶 <b>GARY ALLAN</b> /It Ain't The Whiskey (MCA)                           | 1115   | 191        | 226   | 26        | 28       | 0    |
| 45    | 38 | 📶 <b>BRANTLEY GILBERT</b> /Bottoms Up (Valory)                            | 1072   | 432        | 250   | 100       | 25       | 8    |
| 44    | 39 | 📶 <b>BILLY CURRINGTON</b> /We Are Tonight (Mercury)                       | 887    | 242        | 202   | 41        | 22       | 1    |
| 41    | 40 | 📶 <b>AUSTIN WEBB</b> /Slip On By (Streamsound)                            | 882    | 162        | 179   | 24        | 25       | 1    |
| 40    | 41 | 📶 <b>LEAH TURNER</b> /Take The Keys (Columbia)                            | 831    | 4          | 180   | 5         | 27       | 0    |
| 38    | 42 | <b>TOBY KEITH</b> /Shut Up And Hold On (Show Dog-Universal)               | 804    | -134       | 195   | -34       | 19       | 1    |
| 43    | 43 | 📶 <b>LOCASH COWBOYS</b> /Best Seat In The House (Average Joes/Tenacity)   | 660    | 12         | 142   | 7         | 13       | 0    |
| 46    | 44 | 📶 <b>CHRIS YOUNG</b> /Who I Am With You (RCA)                             | 617    | 52         | 133   | 11        | 12       | 4    |
| 49    | 45 | 📶 <b>KELLIE PICKLER</b> /Little Bit Gypsy (Black River)                   | 472    | 66         | 98    | 15        | 18       | 0    |
| 47    | 46 | <b>KACEY MUSGRAVES</b> /Follow Your Arrow (Mercury)                       | 470    | -92        | 110   | -4        | 15       | 0    |
| 42    | 47 | <b>BROTHERS OSBORNE</b> /Let's Go There (EMI Nashville)                   | 459    | -233       | 120   | -52       | 15       | 0    |
| 50    | 48 | 📶 <b>DYLAN SCOTT</b> /Makin' This Boy Go Crazy (Sidewalk)                 | 420    | 14         | 121   | 7         | 9        | 0    |
| 48    | 49 | <b>GARTH BROOKS &amp; TRISHA YEARWOOD</b> /The Call (Pearl)               | 409    | -121       | 90    | -19       | 8        | 0    |
| Debut | 50 | 📶 <b>TIM MCGRAW</b> /Lookin' For That Girl (Big Machine)                  | 406    | 300        | 111   | 78        | 12       | 8    |
| 58    | 51 | 📶 <b>CHARLIE WORSHAM</b> /Want Me Too (Warner Bros./WAR)                  | 398    | 194        | 68    | 28        | 9        | 0    |
| 51    | 52 | 📶 <b>AMERICAN YOUNG</b> /Love Is War (Curb)                               | 355    | 39         | 73    | 7         | 14       | 0    |
| 53    | 53 | 📶 <b>SHERYL CROW</b> /Callin' Me When I'm Lonely (Warner Bros./WMN)       | 272    | 1          | 60    | 7         | 16       | 0    |
| 52    | 54 | <b>THE CADILLAC THREE &amp; FRIENDS</b> /The South (Big Machine)          | 264    | -9         | 85    | -8        | 9        | 1    |
| 55    | 55 | 📶 <b>CRAIG CAMPBELL</b> /Keep Them Kisses Comin' (Bigger Picture)         | 241    | 10         | 51    | 3         | 7        | 0    |
| 54    | 56 | 📶 <b>OUTSHYNE</b> /Moonlight Crush (Millstar)                             | 224    | -7         | 51    | 4         | 6        | 0    |
| Debut | 57 | 📶 <b>JOE NICHOLS</b> /Yeah (Red Bow)                                      | 223    | 97         | 72    | 27        | 5        | 1    |
| 56    | 58 | 📶 <b>KEVIN FOWLER</b> /How Country Are Ya? (Kevin Fowler/30 Tigers)       | 207    | 0          | 33    | 0         | 4        | 0    |
| 57    | 59 | <b>AARON WATSON</b> /July In Cheyenne (HTK)                               | 202    | -3         | 32    | -1        | 2        | 0    |
| Debut | 60 | 📶 <b>RODNEY ATKINS</b> /Doin' It Right (Curb)                             | 197    | 32         | 42    | 7         | 10       | 0    |

©2014 Country Aircheck™ — All rights reserved. 📶=Top 5 point gainers. Sign up free at [www.countryaircheck.com](http://www.countryaircheck.com)



Honoring  
**Del Bryant**

President, BMI

February 24, 2014  
The Plaza Hotel, New York City

For more information, please contact: The Broadcasters Foundation of America  
212.373.8250 • [info@thebfoa.org](mailto:info@thebfoa.org) • [www.broadcastersfoundation.org](http://www.broadcastersfoundation.org)