

THE **CRS Forecast**
STORM REPORT

50° 37°

Tuesday

20% chance for showers

Wednesday
45° 32°

Thursday
43° 33°

Friday
40° 30°

Saturday
39° 25°

RADIO WEATHER presented by **benztown**

Get your station's local forecast at thestormreport.com.

CRS: We've Got It All

A research experience unlike any other, branding from two perspectives, PPM for small markets and free iPad minis – all are on deck as **CRS 2013** gets underway this week in Nashville. As usual, **Country Aircheck** will provide exhaustive coverage via our daily email, the official **CRS Daily Buzz** and, if past seminars are any indication, multiple **Breaking News** reports. In the meantime, here's the scoop on the items teased above:

Hear In The Real World: "If you've ever wanted to see what the real world of the country listener looks like, you'll want to come and see this study." That's the advice of **Lori Hamilton**, President of Prosperity Productions, who will co-present the CRS Research Presentation with Edison Media Research President **Larry Rosen** Wednesday (2/27) at 2pm during **CRS 2013**. She adds, "Nowhere else can you literally ride in the car, pat the dog, sit on the porch or be out in the field with your listeners."

The study followed 20 Country listeners, including P1s from all four U.S. time zones. Seven allowed cameras to follow them over a period of days. Others logged video diaries based on assignments from Rosen and Hamilton. Specific answers sought include the role of Country music in participants' lives, the nature of that relationship and how it impacts radio.

"Whatever you do best in life, or what you do habitually, you don't have conscious thought about because it's become engrained," says Hamilton. "When you see people in their real world over a long period of time, they reveal themselves in ways that aren't necessarily logical or in ways they're aware of."

Among the observations: "There is a fundamentally different relationship over someone's lifetime with country music than what we've seen with just about any other type of music," she explains. "The closest thing we've seen is people in Europe who grew up with classical music. But there's an emotional connection with this music and what it means to people, how they relate to it and how intimate country is part of their life as opposed to other types of music."

(continued on page 8)



Louisville Sluggers: Capitol's **Luke Bryan** (l) visits with **WAMZ's Coyote Calhoun** in Louisville Friday. Not pictured are the bus loads of label staff, radio and media **UMG/Nashville** took to the show as well.

Country Comes (Back) To Town

There hasn't been a Country radio station sign-on in New York City that didn't at least partially measure itself against **WHN-AM**.

That station raised the profile of the format and left people fascinated with New York's relationship with country music. WHN's 1973-87 run has now been immortalized in a book by former PD **Ed Salamon** called **WHN: When New York City Went Country**. A staff reunion was held tonight (2/25), and WFDU/New York is airing an on-air reunion 9am-3:45pm Tuesday (2/26) that can be streamed [here](#). Salamon spoke to **Country Aircheck** about the book and WHN's continued appeal.



What started you down the path of writing this book?

The idea came from people hearing my stories about the station over the years and encouraging me to memorialize those stories in some way. It's the result of interviewing more than three-dozen

©2013 Country Aircheck™ — All rights reserved. Sign up free at www.countryaircheck.com. Send news to news@countryaircheck.com



JON PARDI

UP ALL NIGHT

Official ADD Date 3/11

CLICK TO LISTEN





TYLER FARR

REDNECK CRAZY

4TH MOST ADDED

KSD WIL KBEQ WDAF WMIL WBCT WQHK WGKX DGHC WXTU WJVC
WGAR WSIX WKMK WGTY WPOR WTHT KNIX KAJA KCYY WNOE WTGE
WFUS WKKT WWKA WGH WUSH WGNE WCYQ WCKN WOGK WUSY WKSF
KSON KUPL KSOP KWNR KRTY KJUG

**"I love this song. There
is nothing on radio that
sounds like Tyler!"**

***- John Paul (VP/Programming),
Dial Global Radio Networks***



THE HIT ANTHEM OF THE NO SHOES NATION!

PIRATE FLAG



Keith Urban

FROM THE NEW CD
LIFE ON A ROCK, IN STORES 4/30

CA/MB 14

BB 14



KELLY
CLARKSON

Don't Rush FEAT. VINCE GILL

TOP 30! CA/MB 29 BB 30*

Top 10 Appeal with Women!

#7 Women 18-54 • #7 Favorite Women 25-34

#8 Favorite CORE Women 35-44

New this week

After Midnite • KKGQ/Los Angeles
WCTK/Providence • WBBS/Syracuse
KXKS/Shreveport



19



NEW CASEY JAMES SINGLE COMING 4/1 19

people who were either involved with the station, or artists whose music was played on WHN, and putting their memories together. The PDs who followed me are an example. I was followed by **Dene Hallam**, who's unfortunately passed away. But the later program directors like **Joel Raab**, **Neil "Moon" Mullins** and **Gary Havens** all contributed. **Pam Greene**, who was music director for almost the whole time that WHN was Country.

Why do you think there is such a fascination with WHN and with Country in New York?

WHN was one of the first stations in New York and one of the first Country stations to do a lot of callout research. It really depended on its listeners to give it feedback. At the time, consumer research was starting to become popular with businesses of all types, but was rather new to radio. We also had incredible air personalities. New Yorkers had a broader definition of country music than [listeners] in other markets. It wasn't that it was more rock, more pop or more conservative, but all of the above. So when you were playing Merle Haggard and George Jones on one end, Poco and the Eagles on the other, and the crossover group in the middle like Crystal Gayle and Kenny Rogers, it was a big help to have air personalities that could tie it all together. We couldn't play a specific type of country music, we had to cover it all.

Who's participating in the reunion?

Personalities include **Lee Arnold**, **Larry Kenney**, **Dan Taylor**, **Mike Fitzgerald**, **Jessie Scott** and **Alan Colmes**, who was a part-timer for us at the time, but is more famous now for political talk. Tuesday's on-air reunion has Pam Greene programming the music and I'll produce the broadcast.

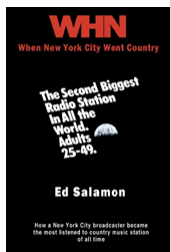
Are there any lessons for today's radio in WHN's story?

Times are different now and while I would certainly not suggest that someone could use the book as a playbook for a contemporary Country station, I think there will always be instances where doing something innovative will also be successful. Change by definition is innovation. [WHN's day] was a time when many people got into radio because they were passionate about music and wanted to share it with other people. There were also those who were passionate about radio itself. I hope those things will continue in our business at all levels. If you're there for those reasons and are successful doing it, it's certainly a wonderful life.

WHN: When New York City Went Country is available at the Country Music Hall of Fame and Museum, from Amazon [here](#) or for Kindle [here](#).

Reach Salamon [here](#).

—Russ Pennell



PAGE THREE PIC



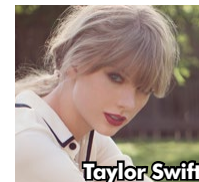
Rhett Carpet Treatment: CRS-27 (1996) was the setting for this slice of history, when radio gathered in Decca's Opryland Hotel suite to hang with the stars. Pictured (l-r) are WGRT/Myrtle Beach, SC's Chris Palmer, Decca's Danny Frazier of Frazier River, label-mate Rhett Akins and WWZD/Tupelo, MS's Mark Summer. Send your memories to pagethreepic@countryaircheck.com.

WHN: Where Are They Now?

Many WHN staffers still work in the industry. **Dan Taylor** hosts mornings at Classic Hits WCBS/New York. **Larry Kenney** spent 35 years as part of the *Imus In The Morning* show and is an accomplished voice-actor. After 19 years with WCBS, **Mike Fitzgerald** works for Press Communications/Monmouth. **Lee Arnold** heads Lee Arnold Marketing. **Alan Colmes** hosts Fox News Radio's *The Alan Colmes Show*, and is a Fox News contributor and author. After 24 years with Westwood One, **Pam Greene** is now Dir./Production Services/Country at Cumulus Media Networks. **Jessie Scott** became a founding member of the Americana Music Association and is director of Hill Country Live in New York.

Chart Chat

Congrats to **Taylor Swift**, **Jack Purcell** and the **Big Machine** promotion team on scoring this week's No. 1 with "Begin Again," from Swift's current multi-platinum album *Red*. The song is her 11th Mediabase



Taylor Swift

©2013 Country Aircheck™ — All rights reserved. Sign up free at www.countryaircheck.com. Send news to news@countryaircheck.com

TOBY KEITH

HOPE ON THE ROCKS

RADIO'S OVERALL WINNER FOR BEST SCREEN PLAY!!

#5 FAVE FEMALES 12+ #6 FAVE MALES 12+
(RADIOFEEDBACK)

SPIN IT
MORE
AND WIN

[CLICK HERE](#)

CA/MB **17**

BDS **19***

Country No. 1 and 13th overall chart-topper. Added kudos to the **BMLG team**, which has secured – for the second consecutive week – the top three spots on the chart with Swift, **Tim McGraw** (Big Machine) and **The Band Perry** (Republic Nashville).

Night Train: All Aboard

The tour that will take **Jason Aldean** to Chicago's Wrigley Field, the University of Georgia's Sanford Stadium and make him the first country artist ever to play Boston's Fenway Park is underway. Aldean, **Jake Owen** and **Thomas Rhett** kicked off the *Night Train Tour* Thursday in Bossier City, LA (2/21). Townsquare's **KXKS/Shreveport, LA** PD/morning host **Gary McCoy** was there, and two days later in Biloxi, MS, so was Clear Channel's **WKSJ/Mobile** PD/midday personality **Bill Black**.

"I was completely blown away," says Black. "Staging is bigger and more exciting than I've ever seen before. Every member of the audience was singing along, even on the new stuff like '1994,' which hasn't been released yet. The duet he does with Kelly [Clarkson] where they had her on-screen fooled over half the crowd. They thought she was in the house. It's a wide stage, which gives you this incredible panoramic scene as you're watching the show. There's great digital graphics, especially on '1994.'"

"There was a pit and people were clamoring to get in it," adds McCoy. "A buddy of mine who's also one of the middle school football coaches was texting me saying 'I'm in the pit! I'm in the pit!' He was just losing his mind. It was that kind of show. It was like where a rock concert hits the dirt road. And with more than 12,000 people in the place, I bet there was a minimum of 25,000 tattoos."

McCoy also got a glimpse of one of Aldean's more notable backstage guests. "One of the guys from [A&E's] *Duck Dynasty* showed up. It was funny because as he was walking into the room with Aldean, security was sort of frantically telling him, 'Sir you've got to put on your backstage pass!' Of course Aldean looks up and says, 'He's okay,' and waves him on over. I couldn't tell which one it was, but he was all decked-out in camo and wearing a camo beanie on his head."

According to Black, the difference in this tour and past performances is dramatic. "I saw Jason not long after his first couple of hits at a small theater here and he just took center-stage, held the guitar and sang the songs," he recalls. "[Now] he jumps all over the place, he's got tons of energy and he's really reacting to the crowd and bringing them into the show. It's huge."

—Russ Penuell



Jason Aldean

MY TUNES: MUSIC THAT SHAPED MY LIFE



Lorianne Crook

Incoming Country Radio Hall of Famer **Lorianne Crook** discusses her most influential artists, songs, albums and concerts:

1. **Charlie Daniels/In America**: First of all, there's simply nobody cooler or hipper than Charlie Daniels. His music turned me from a rock fan to a country fan when I was in high school. Volunteer Jam – need I say more?

2. **Garth Brooks**: I've never seen anything else like it. You can't take your eyes off of him because he looks like he's having the time of his life combined with a religious experience every moment he's on stage. It's impossible not to be captivated by this man.

3. **Alan Jackson/Remember When**: The first time I heard this, it came on the radio when my mom and I were travelling late one night. Suddenly we just stopped talking and didn't utter another word until the song was over. We were speechless. Lyrics and production – absolutely gorgeous. Alan's vocals are brilliantly emotional. When my father passed, we did a music video of this song with our family photos. It has helped us grieve and this is our life story.

4. **Led Zeppelin/Trampled Underfoot**: A holdover from my rock days. Robert Plant is still my guy – best rock voice ever. This song is my jumpstart any day of the week.

5. **Willie Nelson/You Remain**: I'm addicted to his voice – every song, every album. The perfect song when you feel like crying in your glass of wine.

• **A highly regarded band you've never heard**: I have not yet heard the entire Grammy-winning *Raising Sand* album by Robert Plant and Alison Krauss. I think it's because I'm subconsciously so envious that our fabulous Alison got to spend so much time with him!

• **An album you listened to incessantly**: *Friday Night In America* by New Grass Revival. John Cowan is so intense. This album brought a whole new energy into country music. Boz Scaggs *Greatest Hits*. As a writer and vocalist, he kills me. Completely unique.

• **One obscure or non-country song everyone should listen to right now**: "Pachelbel's Canon" in D major. Probably the prettiest song in the world. Not one lyric, but it makes you cry. When it's played perfectly, you can literally feel it tugging at your heart.

• **An "important" piece of music you just don't get**: Opera. My dad was an opera aficionado. I've been to the Metropolitan Opera in New York and feel asleep every time. Pavarotti's "Nessun Dorma" is pretty thrilling, but that's as far as I can go.

©2013 Country Aircheck™ — All rights reserved. Sign up free at www.countryaircheck.com. Send news to news@countryaircheck.com





GLORIANA

CAN'T SHAKE YOU CAC/MB 25

#1 NATIONAL M-SCORE (AGAIN):
The week's best national M-Score among the Top 30!

6 NEW ADDS at Premium Choice WFMS KIZN WCKX KRST WCKN
& Converted at AFTER MIDNITE!

TOP 10 @ TOP 5 @ WGTG Gettysburg, KXLY Spokane, & KEGA Salt Lake City
@ WOGI Pittsburgh, WMIL Milwaukee, WPOR Portland, & WYRK Buffalo

MEDIABASE CALLOUT
#1/Core Females #2/All Females



JANA

KRAMER

Whiskey

CAC/MB 27

MEDIABASE CALLOUT: #2/All Adults #3/All Females

THE MOST PLAYED DEBUT ARTIST OF 2012

ACM NEW FEMALE VOCALIST OF THE YEAR – Winner

ACM NEW ARTIST OF THE YEAR – Nominee

Chosen by radio: CRS NEW FACE OF 2013

On tour with Blake Shelton this Summer!



CHARLIE

WORSHAM "COULD IT BE"

Jumped 20 spots in 6 weeks!

58 - 49 - 47 - 44 - 42 - **38** TW

ADDED AT OVER 60% of REPORTING PANEL!

7 NEW ADDS:

WLHK-KSKS-WAMZ-WRNS-WSLC-WYCT-WUSJ

w.a.r promotion: hit music. follow through.



News & Notes

Cumulus Media Networks has added the **Kix Brooks**-hosted *American Country Countdown* and his overnight show *Kickin' It With Kix* to CBS Radio's **WYCD/Detroit** and Palm Beach Broadcasting's **WIRK/West Palm Beach**. Nextmedia's **WXLC/Waukegan, IL** is the newest affiliate for station imaging service **APM**. For details on all Country services, contact **Bryan Switzer** [here](#).

Former KYGO/Denver morning co-host **Rider** has added Country **WYBL/Ashatabula, OH** and Rock **WZUU/Kalamazoo, MI** to his station image client roster. Reach him [here](#).

Sony Music Nashville artist and songwriter **Angie Johnson** has signed with **Sony/ATV Music Publishing**. Johnson is currently working on her first EP, which is being produced by **Josh Leo**.

The **Country Music Hall of Fame and Museum** has promoted Mgr./Tourism Sales **Brad Henton** to Sr. Mgr./Museum Sales. Henton has been with the institution since 2004.

James Wesley will perform at the *Got Heart, Give Hope Gala* **April 17 in Washington, DC**. Actor **Gary Sinise** will host the event, which benefits **Hope For The Warriors**. More [here](#).

Charlie Daniels will host a free concert March 5 in support of Lipscomb University's Yellow Ribbon Enhancement Program as part of his Charlie Daniels' Scholarship for Heroes event. **Chris Young, The Grascals, Keni Thomas** and **Bleach** are also scheduled to perform.

Rascal Flatts met with **K5 Presents** to record an endorsement in support of positive lyrics for children. K5 Presents is a company determined to give parents safe, fun and powerful age appropriate music for children in Kindergarten through 5th grade.

California winemakers and Nashville songwriters partner for *Napa In Nashville*, a night of music and wine tasting at the Hard Rock Cafe March 7. The event is sponsored by **ASCAP** and benefits **Notes For Education**. Info and tickets [here](#).

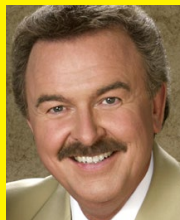
Nashville Vocal Coach **Renee Grant-Williams** is offering her Vocal Master Class "Fearless Solutions For Singers" April 13 at Nashville's Soundcheck Rehearsal Studio. Cost is \$299; sign up [here](#).

The Week's Top Stories

Full coverage at <http://www.countryaircheck.com>

- Cumulus' **WNSH (Nash-FM)/New York** named former KYGO/Denver morning personality **Kelly Ford** and Hot AC **WDVD/Detroit** PM driver **Jesse Addy** to middays and afternoons, respectively. (CAT 2/21)
- Former **WQIK/Jacksonville** PD **Kris Abrams** [\(CAT 5/17\)](#) was named OM/Music Stations for **Cumulus/Albuquerque**, where

MY TUNES: MUSIC THAT SHAPED MY LIFE



Charlie Chase

Incoming Country Radio Hall of Famer **Charlie Chase** discusses his most influential artists, songs, albums and concerts:

1. **Tom T. Hall/Harper Valley PTA** recorded by **Jeannie C. Riley**: Jeannie was the first big star I ever interviewed. I was 16 and, that day in 1968, "Harper Valley PTA" was No. 1 on every chart all across the country. Jeannie C. is still No. 1 with me!

2. **Barbara Mandrell/Sleeping Single**

In A Double Bed: Heard it on the radio for the first time when I played it on WSM-AM. She called me up, while lounging in her pool, to say thanks. Been buddies ever since.

3. **George Jones/He Stopped Loving Her Today**: I will never forget being at WSM-AM in 1980 as fellow DJ Hairl Hensley and I were in the production room listening to this song. It was like, "OMG! This is destined to be the greatest country record of all time!"

4. **Paul Revere And The Raiders, 1968**: Freddy Weller played guitar for the Raiders and I still see him around town today. Great guitarist and songwriter.

5. **The Beatles, White Album**: One of the few albums that I bought where I actually loved every cut! Being a drummer, one of my biggest thrills was meeting Ringo Starr at one of Willie Nelson's Farm Aid concerts.

• **A highly regarded band or artist you've never heard**: Justin Bieber's *Believe*.

• **An album you listened to incessantly**: Kenny Chesney's *No Shoes, No Shirt, No Problems*.

• **An "important" piece of music you just don't get**: The opening line of Hoyt Axton's "Joy To The World." "Jeremiah was a bullfrog, was a good friend of mine." WTH?

• **One obscure or non-country song everyone should listen to right now**: Close your eyes and pick one ... every artist deserves a chance to be heard!

he'll handle day-to-day programming for Country **KRST**. (CAT 2/21)

• Premiere's *The Bobby Bones Show* was set to debut on 35 Clear Channel stations Monday (2/25). (CAT 2/19)

• Former Clear Channel SVP/Programming and longtime Rusty Walker Programming SVP **Phil Hunt** formed a self-named Country radio and digital consultancy. (CAT 2/25)

©2013 Country Aircheck™ — All rights reserved. Sign up free at www.countryaircheck.com. Send news to news@countryaircheck.com



CHRIS JANSON
Est. 1986

BETTER I DON'T

Better You Do...ADD IT NOW!

New Adds At KKBQ, WMZQ, WGNE, WKMK, WGTY, WPAW, KXLY

BIGGER PICTURE

TAYLOR SWIFT BEGIN AGAIN

#1

COUNTRY AIRCHECK/MEDIABASE/USA TODAY

Congratulations, Taylor, on your 13th #1 hit!

-Your Big Machine Records Family



CRS: We've Got It All (Continued from page 1)

Also unique to Country is what she calls an adoption process, partly because it has been stigmatized over the years. "When you talk to people about rock and roll, you'll find there's a moment in their lives – teenage years through college – when they're really into music. As they get older, some are still into music and others drop off. They get nostalgic about that music versus continuing to explore music as they go through life. My sense from country music listeners is they continue to be engaged with artists and the genre overall throughout their lives in ways we don't always see with other types of music."

**Todd Schumacher**

To Beat The Brand: "In radio and media in general, we're enamored by Facebook and social media," says Texas State Networks' **Dan Halyburton**. "Sometimes, we just feel like we have to do it because somebody said we should. But people often don't have a strategy and their expectations are perhaps not in line with what really happens in that medium."

**Matt Sunshine**

He will lead Thursday's "Going From Like to Buy – Digital Lessons of Top Brands," which will bring in heavy hitters including Bridgestone's **Chris Brashear**. "He's a brand guy and his company is trying to influence a process that might be eight to 13 months away," Halyburton says. Another panelist, **Danny Rohrdanz** of Yellow Leaf Marketing, works with smaller retail companies with more immediate interactions. "It will be great to hear the difference between long-term vs. the smaller organizations that are in very short cycles," Halyburton says.

**Lori Hamilton**

Staying with the social media curriculum, **Matt Sunshine** of the Center For Sales Strategy says Friday's "Social Media Live" will attempt to go beyond the buzzwords of social media. "It's going to be a live experiment going on from day one of CRS," Sunshine says. "Everyone there has the ability to participate and join a conversation on Twitter and Facebook about what's going on that week. At our session, we can show the impressions, impact and the connections made during the week. Then we'll look at best practices for your local market."

**Dan Halyburton**

PPM Gets Small: Cox/Louisville GM **Todd**

CHECK OUT**Jaida Dreyer** *I Am Jaida Dreyer* (Streamsound)

"Jaida's music is so personal and authentic," says producer Byron Gallimore (Tim McGraw, Sugarland). "Her charisma and soul completely shine right through on this album." Ten original tracks include "Boy Who Cried Love," a song Dreyer co-wrote and recorded with Sugarland's Kristian Bush.

**The Mavericks** *In Time* (Valory)

Twenty years after their major label debut, this 15-track album was produced by lead singer Raul Malo and Niko Bolas (Neil Young, Warren Zevon), and includes a Spanish version of the single "Come Unto Me."

Album release info to news@countryaircheck.com.

Schumacher will moderate "Small Market PPM: Five Strategies For Recall Markets." The aim is to show different methods PPM is uncovering. "We're focusing what is applicable and that will translate to the diary markets," Schumacher says. "Our intention is to provide information people can take home and use immediately. We're market No. 53 and will probably always be measured by diary. This is great information, but we know we can't do things exactly like PPM stations can." Panelists are KMLE/Phoenix PD **Jeff Garrison**, Rusty Walker Programming's **Scott Huskey** and Arbitron's **Bill Rose**.

All The News: Fit or unfit, you'll read about it in the pages of **Country Aircheck**. Be sure to pick up our CRS print edition on the seminar grounds for the best stories from this year's incoming Country Radio Hall of Famers, an in-depth interview with keynoter and Emmis CEO **Jeff Smulyan**, **George Strait**'s radio recollections, New Faces in booze-laden places, our annual listing of label contacts and more. Including, our second annual CRS Bingo, offering iPad minis as prizes. We'll see you at **WCBS Live!** and the **CRS/Country Aircheck Awards** presentations at the New Faces show, among many other places.

It's not too late to download the official CRS smartphone app in the iPhone and Android stores. And if you're not clear on when or where **CRS 2013** takes place by now, well, we can't help you. **CAC**

©2013 Country Aircheck™ — All rights reserved. Sign up free at www.countryaircheck.com. Send news to news@countryaircheck.com

COUNTRY FOR LIFE**Cumulus Badge Bar**
THE Place To Be at CRS 2013**Wednesday – Friday • 4pm – 2am****Celebrity Guests | Drink Specials | Giveaways | Reverse Happy Hour Nightly**

Begins at 10pm

CUMULUS
MEDIA NETWORKSSee Bryan Switzer for Your
FREE Drink Tickets

TIM MCGRAW

ONE OF
THOSE
NIGHTS

#1 THIS WEEK ON BILLBOARD
COUNTRY AIRPLAY

TWO
LANES of
FREEDOM

#1 DEBUT ON BILLBOARD
HOT COUNTRY ALBUMS



CONGRATULATIONS TIM ON YOUR 33RD #1 SINGLE
AND 14TH #1 ALBUM. WE ARE SO PROUD!
LOOKS LIKE THIS IS GONNA BE 'ONE OF THOSE YEARS'!!!

- YOUR BIG MACHINE RECORDS FAMILY

MAXIMUM AIRPLAY NOW!



CRS 2013 After-Hours Guide

For those of you who sack your groceries in paper over plastic, print your emails and still carry around those funny green slips with presidents on them, here's the paper version of our annual CRS party guide. (You could always just get the official **CRS 2013** app, but you probably knew that already.)

TUESDAY 2/26

5pm | Country Radio Hall of Fame Cocktail Party
NCC Level 2 Foyer

6pm | Country Radio Hall of Fame Dinner & Ceremony
NCC Level 2 Ballroom

8pm | Craig Wayne Boyd
Big Shotz (115 2nd Ave. S.)

8:15pm | BMLG & CMT Radio Kick-Off Party (Invite Only)
Cody Alan (host), Tim McGraw, The Band Perry, Justin Moore, Thomas Rhett, Cassadee Pope, guests
3rd & Lindsley (818 3rd Ave. S.)

8:30pm
Cold River/Bigger Picture Official HoF After Party
Craig Campbell, Katie Armiger
Renaissance Music City Ballroom

8:30pm | Tuesday Night Country Club (Invite Only)
Sheryl Crow
aVenue (120 3rd Ave. S.)

10pm | HitShop Poker Tourney
Renaissance Fisk Room

WEDNESDAY 2/27

4:30pm
Rodeowave Happy Hour
Old Dominion, Phil Vassar, High Valley, Billy Ray Cyrus
Past Perfect (122 3rd Ave. S.)

5pm
Artist Attendee Reception
NCC Performance Hall

6pm | Chris Janson
Swingin' Doors Saloon
(111 4th Ave. S.)

7pm | Grand Ole Opry
Brad Paisley, Darius Rucker, Dustin Lynch, Scotty McCreery, Vince Gill, Little Big Town, Greg Bates, Josh Turner, Kacey Musgraves
Presented by My Well Being/
Humana
NCC Performance Hall

9pm | Lonestar Showcase
Renaissance Music City Ballroom

9:30pm | Blackberry Smoke
The Stage (412 Broadway)

9:30pm
That '70s Showcase, Warner Music Nashville
Dean Alexander, Frankie Ballard, Big & Rich, Sheryl Crow, Brett Eldredge, The FARM, Gloriana, Hunter Hayes, Jana Kramer, Ashley Monroe, John Oates, Blake Shelton, Big Smo, Charlie Worsham
aVenue (120 3rd Ave. S.)

10pm | HitShop Poker Tourney
Renaissance Fisk Room

THURSDAY 2/28

5:15pm
27th General Jackson Show & Dinner Cruise (Invite Only)
Riverfront Taxi Dock (1st & B'way)

6pm | Troop Aid Night
Sponsored by Operation Troop Aid
Whiskey Bent Saloon (306 B'way)

6:30pm | Lady A's Downtown
Puckett's (500 Church St.)

7pm
Bob Kingsley's Acoustic Alley
Rhett Akins, Tom Douglas, Marv Green, Ben Hayslip, Natalie Hemby, Luke Laird, Shane McAnally, Wendell Mobley, Jeff Stevens
Sponsored by Country Top 40, Suntrust Bank
Renaissance Belmont Room

9pm | Late Night Luau
Andy Griggs, guests
Sponsored by Spin Doctors
Margaritaville (322 B'way)

10pm | HitShop Poker Tourney
Renaissance Fisk Room

10pm
Jared Ashley Showcase
National Underground
(105 Broadway #101)

10pm | Jon Pardi Showcase
Silver Dollar Saloon
(110 2nd Ave. N.)

10:30pm
Average D'Joes Unchained
Colt Ford, Montgomery Gentry, JB and the Moonshine Band, LoCash Cowboys, The Lacs, JJ Lawhorn
Center Stage (514 8th Ave S.)

FRIDAY 3/1

5:30pm
New Faces Cocktail Reception
Mark Cooke
Sponsored by Cotton Valley Records (CVR)
NCC Level 1 Foyer

6:30pm | New Faces Dinner
Easton Corbin, Brantley Gilbert, Florida Georgia Line, Jana Kramer, Kip Moore
Sponsored by MDA, ACM
NCC Performance Hall

©2013 Country Aircheck™ — All rights reserved. Sign up free at www.countryaircheck.com. Send news to news@countryaircheck.com



Click Here For Android

THE  APP
FEBRUARY 27- MARCH 1
CRS 2013
COUNTRY RADIO SEMINAR
GET IT NOW!



Click Here For iPhone

THE FOLLOW-UP TO THE PLATINUM PLUS 2 WEEK #1 SMASH HIT
"BETTER DIG TWO"

the band perry



AVAILABLE ON PLAY MPE NOW

ON YOUR DESK TUESDAY, FEBRUARY 26TH
OFFICIAL ADD DATE MONDAY, MARCH 11TH

CLICK HERE TO LISTEN NOW!



BRAND NEW ALBUM **PIONEER** IN STORES TUESDAY, APRIL 2ND

January PPM Scoreboard

Country radio rebounded quickly and emphatically from the traditional Holiday doldrums, as January PPM (1/3-1/30) results show stations regaining both share and cume. Of the 74 subscribing stations (which post a 1.0 share or higher), 61 increased, just nine decreased and four were flat compared to the Holiday book.

Overall shares for Country increased 7.6% in January and cume – which had decreased more than 5% from December to the Holiday book – also increased month-to-month, by 3.5%.

Four stations posted best-ever PPM shares: **KASE/Austin** (10.2), **WSM-FM/Nashville** (5.5), **KUPL/Portland** (7.0) and **KRTY/San Jose** (5.4).

Legend: A "+" indicates a Classic Country outlet; a "^" designates co-owned Country stations in the metro; "t" indicates a tie; and a "*" indicates a station best in that statistic.

Station/Market	Holiday 2012	January	Holiday Cume	January 2012 Cume	Station/Market	Holiday 2012	January	Holiday Cume	January 2012 Cume
WKHX/Atlanta	3.2	3.6	594,700	650,400	WMIL/Milwaukee	8.7	9.0	390,200	422,200
WUBL/Atlanta	3.4	3.5	584,400	630,900	KEEY/Minneapolis	4.9	5.6	649,900	690,000
KASE/Austin ^	6.8	10.2*	348,200	282,800	KMNB/Minneapolis	3.8	4.8	542,900	592,400
KVET/Austin ^	1.8	2.0	227,600	221,800	WSM-FM/Nashville ^	4.0	5.5*	231,400	257,400
WPOC/Baltimore	5.3	6.8	410,300	413,600	WKDF/Nashville ^	3.8	5.2	238,400	274,900
WKLK/Boston	5.3	5.9	684,200	662,600	WSIX/Nashville	3.6	4.5	239,700	242,500
WSOC/Charlotte	5.6	6.6	483,900	467,100	WGH/Norfolk	4.0	4.9	211,000	220,800
WKKT/Charlotte	6.0	6.5	486,700	458,200	WUSH/Norfolk	3.4	4.8	196,000	201,200
WUSN/Chicago	3.4	4.0	1,143,800	1,171,700	WWKA/Orlando	5.1	5.8	319,000	289,600
WUBE/Cincinnati ^	7.2	8.6	468,400	493,900	KNIX/Phoenix	3.7	4.4	611,700	642,200
WNNF/Cincinnati	2.9	2.7	287,700	251,100	KMLE/Phoenix	3.4	3.3	490,900	570,700
WYGY/Cincinnati ^	1.4	1.3	203,100	182,200	WXTU/Philadelphia	3.9	4.8	686,700	767,700
WGAR/Cleveland	6.1	8.0	370,900	392,700	WDSY/Pittsburgh	5.7	6.9	432,000	466,500
WCOL/Columbus, OH	7.8	8.7	339,300	344,600	KUPL/Portland	4.1	7.0*	306,700	419,200
WHOK/Columbus, OH	2.3	1.9	176,100	140,800	KWJJ/Portland	3.2	5.1	329,500	379,900
KPLX/Dallas ^	4.1	4.6	1,056,700	1,102,900	WCTK/Providence	6.1	6.8	248,300	252,700
KSCS/Dallas ^	3.4	3.0	912,400	891,500	WQDR/Raleigh	6.4	7.8	356,700	339,300
KYGO/Denver	3.9	4.9	408,500	495,500	KFRG/Riverside	3.5	4.0	316,700	339,500
KWOF/Denver	1.8	2.2	254,500	272,800	KNCI/Sacramento	4.6	5.5	318,800	349,300
WYCD/Detroit	5.9	6.3	754,200	782,100	KNTY/Sacramento	2.6	3.1	198,400	241,500
WPAW/Greensboro	7.7	8.6	295,700	297,200	KSOP/Salt Lake City	2.6	4.0	169,700	191,700
WTQR/Greensboro	6.7	7.4	320,600	331,200	KUBL/Salt Lake City	3.1	3.9	248,300	273,100
WWYZ/Hartford	7.0	8.8	251,400	265,100	KEGA/Salt Lake City	1.4	1.7	168,600	181,800
KKBQ/Houston ^	3.7	4.5	956,200	1,001,700	KAJA/San Antonio	8.7	8.6	607,300	631,100
KILT/Houston	3.1	3.1	768,200	815,300	KCYX/San Antonio ^	5.0	6.0	588,500	672,700
KTHT/Houston ^ +	1.6	1.9	461,700	469,800	KKYX-AM/San Antonio ^ +	0.8	1.3	65,700	81,500
WFMS/Indianapolis	9.9	8.2	325,200	309,000	KSON/San Diego	6.0	7.2	502,100	521,800
WLHK/Indianapolis	6.3	7.9	322,600	303,500	KRTY/San Jose	4.8	5.4*	162,500	177,200
WQIK/Jacksonville	5.2	5.2	232,600	248,100	KKWF/Seattle	3.1	3.8	545,300	566,800
KFKF/Kansas City ^	9.2	7.4	491,200	314,600	KMPS/Seattle	3.1	3.3	507,400	527,200
KBEQ/Kansas City ^	5.1	5.1	309,800	301,900	KSD/St. Louis	6.0	6.3	481,100	542,400
WDAF/Kansas City	4.8	4.0	320,400	321,300	WIL/St. Louis	4.6	5.2	486,500	513,800
KCYE/Las Vegas	4.1	4.7	205,300	185,900	WFUS/Tampa	5.0	5.8	522,500	518,500
KWNR/Las Vegas	2.6	3.5	188,500	184,100	WQYK/Tampa	4.8	5.2	449,900	483,700
KKGO/Los Angeles	2.5	2.8	1,149,800	1,190,000	WMZQ/Washington	2.3	2.8	456,000	485,700
WGKX/Memphis	6.4	6.4	229,700	220,700	WFRE/Frederick, MD	2.0	2.3	152,900	150,800
WKIS/Miami	2.9	3.1	480,600	462,800	WIRK/West Palm Beach	2.1	2.5	130,200	147,000

©2013 Country Aircheck™ — All rights reserved. Sign up free at www.countryaircheck.com. Send news to news@countryaircheck.com



New ADDS this week: KHGE/Fresno WDSY/Pittsburgh

KILT/Houston KKBQ/Houston KMPS/Seattle WJVC/Nassau-Suffolk
KUPL/Portland, OR WOGI/Pittsburgh KAJA/San Antonio
KCYX/San Antonio KSOP/Salt Lake City KCYE/Las Vegas
WWKA/Orlando WUSH/Norfolk WNOE/New Orleans
KTEX/McAllen WCKT/Ft. Myers KHGE/Fresno WCTQ/Sarasota
WCYQ/Knoxville WXCW/Wilmington, DE WTGE/Baton Rouge
WPOR/Portland, ME WTHI/Portland, ME WWQM/Madison, WI
WBUL/Lexington, KY WGTW/York, PA WDSY Pittsburgh

**See Katie live Tuesday night at 8:30 pm at
the Hall Of Fame After Party held in the
Music City Ballroom at the Renaissance.**

LW	TW	Artist/Title (Label)	Total Points +/-	Points Total	Plays +/-	Plays Audience	+/- Aud	Stations	ADDS
3	1	TAYLOR SWIFT/Begin Again (Big Machine) ✓	21261	2854	6447	856	50.381	4.884	141 0
2	2	TIM MCGRAW/One Of Those Nights (Big Machine)	21190	126	6672	87	52.73	0.639	141 0
1	3	THE BAND PERRY/Better Dig Two (Republic Nashville)	19957	-1876	6101	-661	49.851	-4.309	141 0
4	4	LITTLE BIG TOWN/Tornado (Capitol)	19182	782	6110	199	47.153	1.836	141 0
6	5	DIERKS BENTLEY/Tip It On Back (Capitol)	17744	976	5604	321	44.27	1.721	141 0
7	6	CARRIE UNDERWOOD/Two Black Cadillacs (19/Arista) ✓	17208	1012	5450	323	43.461	2.334	140 0
9	7	BLAKE SHELTON/Sure Be Cool If You Did (Warner Bros./WMN) ✓	16183	1333	5057	410	40.779	4.245	141 0
8	8	HUNTER HAYES/Somebody's Heartbreak (Atlantic/WMN/RRP)	15907	557	4901	93	39.319	1.305	141 0
11	9	LEE BRICE/I Drive Your Truck (Curb)	14466	733	4549	235	36.495	2.663	141 1
12	10	KACEY MUSGRAVES/Merry Go 'Round (Mercury)	12942	573	3884	124	32.534	2.354	141 0
13	11	CHRIS YOUNG/I Can Take It From There (RCA)	12122	776	3850	223	28.667	1.864	140 0
15	12	LADY ANTEBELLUM/Downtown (Capitol) ✓	12075	1386	3620	381	30.775	4.489	141 0
14	13	THOMPSON SQUARE/If I Didn't Have You (Stoney Creek)	11823	1008	3700	339	29.459	2.031	138 4
18	14	KENNY CHESNEY/Pirate Flag (Blue Chair/Columbia) ✓	11247	2017	3483	654	27.777	4.717	141 1
17	15	GEORGE STRAIT/Give It All We Got Tonight (MCA)	10291	679	3301	261	25.155	2.036	140 0
19	16	MIRANDA LAMBERT/Mama's Broken Heart (RCA)	9887	880	3190	297	24.533	2.359	141 0
21	17	TOBY KEITH/Hope On The Rocks (Show Dog-Universal)	8860	251	2730	56	20.461	0.287	138 0
10	18	BRAD PAISLEY/Southern Comfort Zone (Arista)	8734	-5430	2593	-1771	20.445	-14.819	141 0
22	19	FLORIDA GEORGIA LINE/Get Your Shine On (Republic Nashville)	8518	872	2622	281	21.162	2.953	131 1
23	20	DUSTIN LYNCH/She Cranks My Tractor (Broken Bow)	7687	250	2542	103	18.319	0.875	134 2
24	21	BRANTLEY GILBERT/More Than Miles (Valory)	7383	826	2344	234	17.613	2.335	134 3
25	22	ERIC CHURCH/Like Jesus Does (EMI Nashville)	6743	772	2190	283	15.289	0.985	134 5
27	23	RASCAL FLATTS/Changed (Big Machine)	5961	546	1923	163	12.198	1.875	134 0
26	24	THE HENNINGSENS/American Beautiful (Arista)	5766	267	1822	88	12.599	0.428	134 6
28	25	GLORIANA/Can't Shake You (Emblem/W.A.R.)	5197	587	1683	183	11.764	1.329	127 5

Airborne indicates songs that have been added to 60% of the Country Aircheck/Mediabase reporting panel. ✓=Top 5 point gainers.



Thank you Country Radio for making
a **great song** even

"BETTER"

#3 MOST ADDED

34 FIRST WEEK STATIONS

"Rose & company knock it out of the park....
It's so **simple** yet so **powerful** at the same time."
-Urban Country

MAGGIE ROSE




MAGGIE ROSE
3.26.2013

JAMES WESLEY

THANK A FARMER

(written by Dustin Lynch, Steve Bogard and Josh Thompson)

"Thank a Farmer is a little deeper than the title suggests. It's a reminder that no matter where you live...the "farmer" like a trucker touches your daily life and it's a shrinking segment of America." - **BILL HAGY/WXBQ/WQBE**

"You want instant reaction?? Play this song. One time is all it takes. Talk about a slam dunk..." - **SCOTT DONATO/WGTY**

"Love it! Love It! Not gonna wait on this one!"
- **COREY GARRISON/WTHT**

"Wow. Talk about timely. Reaction record, for sure!"
- **TANYA BURKO/WGGY**

"I love it! James is an amazing talent and deserves a shot!"
- **JT BOSCH/WRBT**

"This is awesome, perfect timing, perfect song!"
- **NATE DEATON/KRTY**

"Thank a Farmer plows through this country music field, so let your listeners "thank" you for playing James Wesley"
- **TOM TRAVIS/KTST**

"Thank a Farmer is one of the biggest reacting songs to a single test spin ever.... It's well written and James Wesley delivers a song with a message that resonates with more than just a farmer, it resonates with our audience." - **TIM COTTER/KXLY**

In a PPM world, you want instant reaction, instant recognition, and the instant request to hear it more. "Thank A Farmer" is THAT song.

IMPACTING NOW!



LW	TW	Artist/Title (Label)	Total Points	+/- Points	Total Plays	+/- Plays	Audience	+/- Aud	Stations	ADDS
29	26	📶 DARIUS RUCKER /Wagon Wheel (Capitol)	4925	911	1537	252	11.028	2.402	122	11
30	27	📶 JANA KRAMER /Whiskey (Elektra Nashville/W.A.R.)	4475	480	1300	126	10.438	2.223	100	5
32	28	📶 KIP MOORE /Hey Pretty Girl (MCA)	4188	976	1194	302	9.907	3.561	102	9
31	29	📶 KELLY CLARKSON f/VINCE GILL /Don't Rush (19/RCA/Columbia)	3886	359	1273	106	8.206	0.783	118	3
33	30	📶 JERROD NIEMANN /Only God Could Love You More (Sea Gayle/Arista)	3343	359	1104	99	6.186	1.088	102	1
AIRBORNE JAKE OWEN /Anywhere With You (RCA)			3303	897	981	261	7.034	2.214	92	14
34	32	📶 LOVE AND THEFT /Runnin' Out Of Air (RCA)	3096	159	979	30	5.226	0.383	99	3
35	33	📶 CRAIG MORGAN /More Trucks Than Cars (Black River)	2923	118	1044	44	6.73	0.498	97	3
AIRBORNE BRETT ELDREDGE /Don't Ya (Atlantic/WMN)			2784	470	928	130	4.944	1.055	84	8
AIRBORNE EASTON CORBIN /All Over The Road (Mercury)			2754	574	905	159	5.262	1.319	86	4
36	36	📶 MONTGOMERY GENTRY /I'll Keep The Kids (Average Joes/New Revolution)	2652	177	828	39	5.55	0.168	79	1
38	37	📶 THE FARM /Be Grateful (WMN/New Revolution)	2363	40	778	23	4.03	0.331	74	2
AIRBORNE CHARLIE WORSHAM /Could It Be (Warner Bros./W.A.R.)			2148	395	676	91	3.669	1.148	84	7
41	39	📶 CRAIG CAMPBELL /Outta My Head (Bigger Picture)	2063	52	792	32	3.325	0.226	83	2
44	40	📶 TIM MCGRAW w/TAYLOR SWIFT /Highway Don't Care (Big Machine)	1909	553	586	172	4.48	1.244	42	21
49	41	📶 JOEL CROUSE /If You Want Some (Show Dog-Universal)	1392	376	430	107	1.902	0.521	60	7
46	42	📶 BLACKBERRY SMOKE /Pretty Little Lie (Southern Ground)	1255	102	437	44	1.724	0.176	46	3
45	43	📶 AARON LEWIS /Forever (Blaster/WBN)	1236	69	476	22	2.028	0.19	55	0
48	44	📶 MUMFORD & SONS /I Will Wait (Glassnote)	1193	126	301	48	2.695	0.323	17	1
47	45	SARAH DARLING /Home To Me (Black River)	1110	-9	449	-12	1.906	0.019	46	2
Debut	46	📶 JASON ALDEAN /1994 (Broken Bow)	1092	992	292	266	2.629	2.387	37	36
Debut	47	📶 GARY ALLAN /Pieces (MCA)	980	468	245	113	1.933	0.769	44	34
Debut	48	📶 PARMALEE /Carolina (Stoney Creek)	965	248	375	97	1.304	0.342	53	7
Debut	49	📶 GREG BATES /Fill In The Blank (Republic Nashville)	910	130	332	75	1.22	0.252	48	6
43	50	JOSH TURNER /Find Me A Baby (MCA)	910	-616	304	-241	1.484	-0.809	78	0

Airborne indicates songs that have been added to 60% of the Country Aircheck/Mediabase reporting panel. ✓=Top 5 point gainers.

CRAIG MORGAN
"MORE TRUCKS THAN CARS"

NEW THIS WEEK:
WBUL WKKT KRY5 KKIX KTST WDRM

CA/MB 33* BB 34*

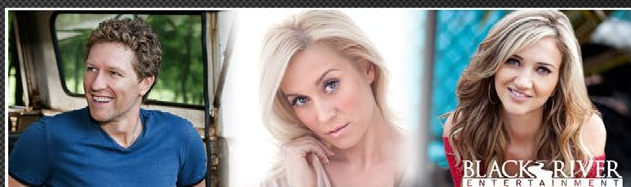
SARAH DARLING
"HOME TO ME"

NEW THIS WEEK:
WDSY WKKT KWNR WRNS KVOX

OVER 85,000 UNITS SOLD!

DON'T MISS CRAIG MORGAN, SARAH DARLING
& KELLIE PICKLER AT THE BRE SHOW

MARCH 1ST • NOON • CRS



Country Aircheck Add Leaders

JASON ALDEAN/1994 (Broken Bow)
GARY ALLAN/Pieces (MCA)
MAGGIE ROSE/Better (RPME)
TYLER FARR/Redneck Crazy (Columbia)
TIM MCGRAW w/TAYLOR SWIFT/Highway Don't Care (Big Machine)
ZAC BROWN BAND/Jump Right In (Southern Ground/Atlantic)
JAKE OWEN/Anywhere With You (RCA)
DARIUS RUCKER/Wagon Wheel (Capitol)
RACHEL FARLEY/Ain't Easy (Red Bow)
KIP MOORE/Hey Pretty Girl (MCA)

Country Aircheck Top Point Gainers

TAYLOR SWIFT/Begin Again (Big Machine)
KENNY CHESNEY/Pirate Flag (Blue Chair/Columbia)
LADY ANTEBELLUM/Downtown (Capitol)
BLAKE SHELTON/Sure Be Cool If You Did (Warner Bros./WMN)
CARRIE UNDERWOOD/Two Black Cadillacs (19/Arista)
THOMPSON SQUARE/If I Didn't Have You (Stoney Creek)
JASON ALDEAN/1994 (Broken Bow)
DIERKS BENTLEY/Tip It On Back (Capitol)
KIP MOORE/Hey Pretty Girl (MCA)
DARIUS RUCKER/Wagon Wheel (Capitol)

Country Aircheck Top Spin Gainers

TAYLOR SWIFT/Begin Again (Big Machine)
KENNY CHESNEY/Pirate Flag (Blue Chair/Columbia)
BLAKE SHELTON/Sure Be Cool If You Did (Warner Bros./WMN)
LADY ANTEBELLUM/Downtown (Capitol)
THOMPSON SQUARE/If I Didn't Have You (Stoney Creek)
CARRIE UNDERWOOD/Two Black Cadillacs (19/Arista)
DIERKS BENTLEY/Tip It On Back (Capitol)
KIP MOORE/Hey Pretty Girl (MCA)
MIRANDA LAMBERT/Mama's Broken Heart (RCA)
ERIC CHURCH/Like Jesus Does (EMI Nashville)

Adds Activator Top Point Gainers

36	KENNY CHESNEY /Pirate Flag (Blue Chair/Columbia)	855 ✓
34	JASON ALDEAN /1994 (Broken Bow)	694 ✓
32	CARRIE UNDERWOOD /Two Black Cadillacs (19/Arista)	672 ✓
30	KIP MOORE /Hey Pretty Girl (MCA)	668 ✓
21	DARIUS RUCKER /Wagon Wheel (Capitol)	587 ✓
18	TIM MCGRAW w/TAYLOR SWIFT /Highway Don't Care (Big Machine)	585
14	ERIC CHURCH /Like Jesus Does (EMI Nashville)	548
11	THOMPSON SQUARE /If I Didn't Have You (Stoney Creek)	475
11	LADY ANTEBELLUM /Downtown (Capitol)	472
9	LEE BRICE /I Drive Your Truck (Curb)	462

Activator Top Spin Gainers

2854 ✓	KENNY CHESNEY /Pirate Flag (Blue Chair/Columbia)	177
2017 ✓	JASON ALDEAN /1994 (Broken Bow)	150
1386 ✓	KIP MOORE /Hey Pretty Girl (MCA)	145
1333 ✓	CARRIE UNDERWOOD /Two Black Cadillacs (19/Arista)	140
1012 ✓	ERIC CHURCH /Like Jesus Does (EMI Nashville)	126
1008	TIM MCGRAW w/TAYLOR SWIFT /Highway Don't Care (Big Machine)	108
992	DARIUS RUCKER /Wagon Wheel (Capitol)	102
976	THOMPSON SQUARE /If I Didn't Have You (Stoney Creek)	97
976	LADY ANTEBELLUM /Downtown (Capitol)	94
911	TAYLOR SWIFT /Begin Again (Big Machine)	83

Country Aircheck Top Recurrents

		Points
856	JASON ALDEAN /The Only Way I Know (Broken Bow)	14322
654	GARY ALLAN /Every Storm (Runs Out Of Rain) (MCA)	13585
410	RANDY HOUSER /How Country Feels (Stoney Creek)	9954
381	FLORIDA GEORGIA LINE /Cruise (Republic Nashville)	9854
339	CASEY JAMES /Crying On A Suitcase (19/Columbia)	8132
323	ZAC BROWN BAND /Goodbye In Her Eyes (Atlantic/Southern Ground)	7871
321	LUKE BRYAN /Kiss Tomorrow Goodbye (Capitol)	7380
302	KIP MOORE /Beer Money (MCA)	6946
297	JAKE OWEN /The One That Got Away (RCA)	6415
283	JUSTIN MOORE /Til My Last Day (Valory)	6150

©2013 Country Aircheck™ — All rights reserved. Sign up free at www.countryaircheck.com. Send news to news@countryaircheck.com



RING SIDE

A FIGHT FOR KIDS





DAMON MOBERLY vs. **JIMMY RECTOR**



KEITH GAILE vs. **EJ BERNAS**

MARCH 8

**LIBERTY HALL,
THE FACTORY AT
FRANKLIN**

**DETAILS
HERE**

Country Aircheck Activity

SARAH DARLING/Home To Me (Black River)

Moves 47-45
1,110 points, 449 spins
2 adds: **WDSY*, WKKT**

JASON ALDEAN/1994 (Broken Bow)

Debuts at 46*
1,092 points, 292 spins
36 adds, including: **KAJA, KAWO, KEYE, KEGA, KILT*, WBEE, WCOL, WDAF, WGH, WGNA**

GARY ALLAN/Pieces (MCA)

Debuts at 47*
980 points, 245 spins
34 adds, including: **KBEQ, KEYE, KJUG, KKBQ*, KKIX, WBCT, WCKT, WCTQ, WFUS, WGNE**

PARMALEE/Carolina (Stoney Creek)

Debuts at 48*
965 points, 375 spins
7 adds: **WGGY, WGH, WKSJ, WKXC, WMIL, WOGK, WWYZ**

GREG BATES/Fill In The Blank (Republic Nashville)

Debuts at 49*
910 points, 332 spins
6 adds: **KBEQ, WFUS, WMIL, WOGI, WUSK, WWYZ**

JOSH TURNER/Find Me A Baby (MCA)

Re-enters at 50
910 points, 304 spins; No adds

CHRIS JANSON/Better I Don't (Bigger Picture)

875 points, 314 spins
3 adds: **KKBQ*, WGNE, WMZQ**

SWEETWATER RAIN/Starshine (Curb)

789 points, 312 spins; No adds

TRAIN f/Ashley Monroe/Bruises (Columbia/Nine North)

787 points, 260 spins
2 adds: **KFRG*, KNCI***

ADD DATES

MARCH 4

RANDY HOUSER/Runnin' Outta Moonlight (Stoney Creek)

MARCH 11

SHERYL CROW/Easy (Old Green Barn/Sea Gayle/Warner Bros./WMN)

BILLY DEAN/I Can't Leave a Good Thing (Flying Island)

JON PARDI/Up All Night (Capitol)

THE BAND PERRY/Done (Republic Nashville)

MARCH 18

PHIL VASSAR/Love Is Alive (Rodeowave)

JUSTIN MOORE/Point At You (Valory)

VIDEO ADDS

CMT

EASTON CORBIN/All Over The Road (Mercury)

FLORIDA GEORGIA LINE/Get Your Shine On (Republic)

JERROD NIEMANN/Only God Could Love You More (Sea Gayle/Arista)

CMT PURE

DANIELLE PECK/Impossible Dreams (Namaste)

EASTON CORBIN/All Over The Road (Mercury)

FLORIDA GEORGIA LINE/Get Your Shine On (Republic)

JERROD NIEMANN/Only God Could Love You More (Sea Gayle/Arista)

MARIE MILLER/You're Not Alone (Curb)

SHOVELS & ROPE/Birmingham (Dualtone)

STEVE EARLE/Invisible (New West)

THE DIRTY GUV'NAHS/Fairlane (Dualtone)

GAC

EASTON CORBIN/All Over The Road (Mercury)

FLORIDA GEORGIA LINE/Get Your Shine On (Republic)

JERROD NIEMANN/Only God Could Love You More (Sea Gayle/Arista)

THE COUNTRY NETWORK

None listed

©2013 Country Aircheck™ — All rights reserved. Sign up free at www.countryaircheck.com. Send news to news@countryaircheck.com

SOLID BUSINESS REASONS YOU CAN'T AFFORD TO MISS CRS 2013:



FEBRUARY 27- MARCH 1

CRS2013
COUNTRY RADIO SEMINAR

• IT TESTING
Takes 6 Minutes • Saves Your Life • Saves \$1000

• Edison Research
A Day in the Life of a Country Fan

• Emmy-Winning CNN Correspondent
Dr. Sanjay Gupta

• Actionable New Research & Perspective
For Your Business.

• New Social Media, Marketing,
Programing, & Revenue Strategies

• The Most Affordable CRS Ever!

REGISTER ONLINE TODAY: WWW.COUNTRYRADIOSEMINAR.COM

LW	TW	Artist/Title (Label)	Points	+/-	Points	Plays	+/-	Plays	Stations	Adds
3	1	TIM MCGRAW /One Of Those Nights (Big Machine)	10237		360	2086		57	52	0
2	2	LITTLE BIG TOWN /Tornado (Capitol)	9963		-336	2049		-24	51	0
1	3	THE BAND PERRY /Better Dig Two (Republic Nashville)	9959		-557	2001		-141	50	0
4	4	CARRIE UNDERWOOD /Two Black Cadillacs (19/Arista) ✓	9251		672	1899		140	52	0
5	5	DIERKS BENTLEY /Tip It On Back (Capitol)	8641		126	1738		11	49	0
7	6	BLAKE SHELTON /Sure Be Cool If You Did (Warner Bros./WMN)	8346		420	1704		81	52	0
9	7	LEE BRICE /I Drive Your Truck (Curb)	7983		462	1618		78	51	0
8	8	HUNTER HAYES /Somebody's Heartbreak (Atlantic/WMN)	7963		203	1604		41	52	0
11	9	TAYLOR SWIFT /Begin Again (Big Machine)	7185		372	1439		83	48	0
12	10	KACEY MUSGRAVES /Merry Go 'Round (Mercury)	7078		310	1419		70	52	0
13	11	CHRIS YOUNG /I Can Take It From There (RCA)	6651		238	1331		48	51	0
14	12	GEORGE STRAIT /Give It All We Got Tonight (MCA)	6273		316	1216		72	52	0
15	13	LADY ANTEBELLUM /Downtown (Capitol)	5834		472	1210		94	52	0
16	14	THOMPSON SQUARE /If I Didn't Have You (Stoney Creek)	5683		475	1129		97	50	0
19	15	KENNY CHESNEY /Pirate Flag (Blue Chair/Columbia) ✓	5525		855	1111		177	53	1
17	16	MIRANDA LAMBERT /Mama's Broken Heart (RCA)	5411		316	1083		58	51	0
10	17	BRAD PAISLEY /Southern Comfort Zone (Arista)	5131		-2041	961		-421	43	0
18	18	TOBY KEITH /Hope On The Rocks (Show Dog-Universal)	5104		140	1038		18	48	0
20	19	DUSTIN LYNCH /She Cranks My Tractor (Broken Bow)	4708		134	915		31	48	0
21	20	FLORIDA GEORGIA LINE /Get Your Shine On (Republic Nashville)	4485		101	933		16	51	0
22	21	BRANTLEY GILBERT /More Than Miles (Valory)	4150		302	817		46	48	1
26	22	ERIC CHURCH /Like Jesus Does (EMI Nashville)	3766		548	821		126	52	1
24	23	THE HENNINGSENS /American Beautiful (Arista)	3480		118	636		17	49	1
25	24	RASCAL FLATTS /Changed (Big Machine)	3299		3	646		4	48	0
28	25	DARIUS RUCKER /Wagon Wheel (Capitol) ✓	3232		587	654		102	49	1
29	26	KELLY CLARKSON f/ VINCE GILL /Don't Rush (19/RCA/Columbia)	2277		136	470		38	40	1
30	27	GLORIANA /Can't Shake You (Emblem/W.A.R.)	2265		159	443		29	45	1
31	28	JAKE OWEN /Anywhere With You (RCA)	2167		367	472		77	41	2
36	29	KIP MOORE /Hey Pretty Girl (MCA) ✓	2030		668	417		145	43	5
33	30	JANA KRAMER /Whiskey (Elektra Nashville/W.A.R.)	2001		382	357		75	36	3

©2013 Country Aircheck™ — All rights reserved. ✓=Top 5 point gainers. Sign up free at www.countryaircheck.com

SEE THE LIGHT.

JOIN UP.

BECOME A MEMBER NOW!

COUNTRY MUSIC HALL OF FAME AND MUSEUM NASHVILLE

HONOR THY MUSIC®

LW	TW	Artist/Title (Label)	Points	+/-	Points	Plays	+/-	Plays	Stations	Adds
32	31	EASTON CORBIN /All Over The Road (Mercury)	1862	106	373	21	35	1		
34	32	JERROD NIEMANN /Only God Could Love You More (Sea Gayle/Arista)	1504	-29	318	12	29	0		
35	33	LOVE AND THEFT /Runnin' Out Of Air (RCA)	1468	275	288	46	33	2		
35	34	MONTGOMERY GENTRY /I'll Keep The Kids (Average Joes/New Revolution)	1361	-74	267	-9	27	1		
37	35	CRAIG MORGAN /More Trucks Than Cars (Black River)	1245	-31	257	-7	27	1		
49	36	TIM MCGRAW w/TAYLOR SWIFT /Highway Don't Care (Big Machine)	902	585	180	108	22	6		
41	37	GREG BATES /Fill In The Blank (Republic Nashville)	784	97	172	26	20	2		
39	38	JOEL CROUSE /If You Want Some (Show Dog-Universal)	757	-21	138	-7	13	0		
Debut	39	JASON ALDEAN /1994 (Broken Bow) ✓	694	694	193	150	22	16		
40	40	JOSH TURNER /Find Me A Baby (MCA)	684	-48	130	-9	14	0		
42	41	CRAIG CAMPBELL /Outta My Head (Bigger Picture)	666	18	130	4	13	0		
44	42	BLACKBERRY SMOKE /Pretty Little Lie (Southern Ground)	540	106	103	11	11	0		
Debut	43	GARY ALLAN /Pieces (MCA)	526	385	98	64	11	7		
43	44	SARAH DARLING /Home To Me (Black River)	497	-6	107	1	14	1		
45	45	LONESTAR /Maybe Someday (4 Star/Tenacity)	449	22	89	-1	10	0		
46	46	CHARLIE WORSHAM /Could It Be (Warner Bros./W.A.R.)	421	36	94	8	10	2		
59	47	ZAC BROWN BAND /Jump Right In (Atlantic/Southern Ground)	360	196	68	34	12	4		
48	48	JOSH ABBOTT BAND /I'll Sing About Mine (Pretty Damn Tough)	347	-2	75	-1	8	0		
52	49	BRETT ELDREDGE /Don't Ya (Atlantic/WMN)	342	114	102	26	15	0		
47	50	UNCLE KRACKER /Nobody's Sad On A Saturday... (Sugar Hill/EMI Nashville)	319	-53	70	-6	9	0		
50	51	TRAIN f/ASHLEY MONROE /Bruises (Clumbia/Nine North)	310	4	63	-8	4	0		
55	52	MARK COOKE /Stay With Me Tonight (CVR/Quarterback)	277	75	39	8	4	0		
53	53	AUSTIN WEBB /It's All Good (Streamsound)	255	38	51	8	7	1		
Debut	54	RANDY HOUSER /Runnin' Outta Moonlight (Stoney Creek)	239	173	93	35	7	2		
60	55	ASH BOWERS /Red (Wide Open)	236	77	48	13	5	0		
54	56	THE FARM /Be Grateful (WMN/New Revolution)	213	6	46	0	13	0		
58	57	KRISTEN KELLY /He Loves To Make Me Cry (Arista)	207	32	38	7	7	0		
Debut	58	PARMALEE /Carolina (Stoney Creek)	177	30	61	2	4	0		
57	59	AARON WATSON /Lips (HTK)	164	-15	26	-4	4	0		
51	60	MUMFORD & SONS /I Will Wait (Glassnote)	156	-96	19	-13	1	1		

 ©2013 Country Aircheck™ — All rights reserved. ✓=Top 5 point gainers. Sign up free at www.countryaircheck.com

BUILD YOUR DATABASE WITH

COUNTRY
AIRCHECK
ARTIST NEWSLETTER

FREE

 Contact Gabrielle Graf-Palmer for details: gabrielle@countryaircheck.com or 615-615.427.8482