



# COUNTRY AIRCHECK

WEEKLY ——— March 27, 2017, Issue 543

**#1 Most Added**  
with **146 First**  
**Week Stations!**

**#19 BB**  
**Highest debut**  
**of the year!**

Debut at **#31**  
CA/MB

**ARISTA**  
NASHVILLE

## TIM MCGRAW & FAITH HILL SPEAK TO A GIRL

### THANK YOU COUNTRY RADIO!

#### True Crime Radio On WPAP

Shots were fired, a man lay bleeding, suspects were thought to have an AK-47, a frustrated cop reached out to radio and listeners spearheaded an arrest. This may sound like the plot to an upcoming episode of *Law & Order*, but it all played out in real life Sunday in Bay County Florida.

**Country Aircheck's** Paul Williams was returning from vacation and heard the situation unfold over the air in real time.

Late morning, a man was shot in the abdomen behind a local motel and his AK-47 rifle was stolen. The victim was taken to Bay Medical for surgery as Sheriff Tommy Ford jumped into action. His first thought was to alert the public, but calls to contact numbers for local television stations were unsuccessful. Frustrated, he contacted iHeartMedia WPAP/Panama City morning host Dr. **Shane Collins**.



**Shane Collins**

"He called my cell phone ... I've never heard that tone in his voice," says Collins, an 18-year station vet with a strong relationship with Ford. Understanding the sheriff's anxiousness to get the public's help, Collins acted quickly, alerting Director/Engineering (continued on page 9)



**Okay, Okay:** Sony's John Zarling, manager Martha Earls, RCA's Kane Brown and Cumulus' Tariq Lundy and Danger (l-r) at KHKI/Des Moines, IA.



# Thank you Country Radio!

# DIRT ON MY BOOTS

**\*1 AIRCHECK/MEDIABASE**

**\*1 BILLBOARD/BDS**

**RARE BILLBOARD 3 WEEK  
NUMBER ONE!**

**Certified GOLD**

**and closing in on Platinum  
817,000 SPS SALES**

**From the #1 debuting album,  
CALIFORNIA SUNRISE**

**JON PARDI**

**2017 ACM New Male  
Vocalist of the Year!**

  
RECORDS  
A UNIVERSAL MUSIC COMPANY





## COUNTRY AIRCHECK

MY TUNES: MUSIC THAT SHAPED MY LIFE



Phil Vassar

American Soul LLC's **Phil Vassar** discusses his most influential music:

- 1. Merle Haggard:** My very first concert I ever went to was Merle Haggard, so off the bat I was all about singer/songwriters.
- 2. Bruce Springsteen's *The River*:** When I heard that album then saw his concert, I was hooked. It's like he goes to work, man. And that's what I love to do onstage. Nothing bores me more than a concert where people just stand there. I was changed forever.
- 3. Singer/songwriters:** Guys like Tom Petty and Bob Seger were my jam. I always wondered what they were going to write next. There was a mystique about these guys. You didn't really know anything about them, you just listened to the music. You knew Billy Joel was happy when he was writing this record, and you knew he was going through a divorce when he was writing this next record. Their life bleeds into their music.
- 4. Elton John:** I'm a piano player, so of course growing up listening to Elton John.
- 5. Queen/Freddie Mercury:** I was such a fan of their music and their flamboyancy onstage.
  - **Highly regarded music you've never heard:** Lana Del Rey. I've never heard her, but my daughter loves her.
  - **"Important" music you just don't get:** I'm a musical person, so a lot of rap I don't understand [because] it's more talking [than singing].
  - **An album you listened to incessantly:** James Taylor's *Greatest Hits One and Two*.
  - **Obscure or non country song you think everyone should listen to right now:** "America" by Simon and Garfunkel. I love that song.
  - **Music you'd rather not admit to enjoying:** The Bee Gees are amazing and I have no problem admitting that. They sure caught a lot of sh\*t back in the day, but I think they're brilliant. I do love cheesy love songs. It's just cheese. But it's good cheese, you know?

## Zac Keeps Breaking (Southern) Ground

Recently honored as CRS Artist Humanitarian, **Zac Brown**, his band and team have contributed to a host of charitable efforts, but only one has been called Brown's "life's work." **Camp Southern Ground**, as profiled more than two years ago, was 400 acres of more vision than camp. Now with operational facilities, ongoing events and mini-camps with an eye toward full summer camps next year, CSG is well into its first phase of development, as new CEO **Mike Dobbs** explains.

Dobbs worked in a consulting role before being tapped by the CSG board for the position. "By that time I had fallen in love with the mission," he says. "My fear was a publicist told Zac he really needed to attach himself to a charity to bolster his image. When I realized this is something



Mike Dobbs



Dining Hall

he's been talking about since he was 14 – it's his passion and truly where his heart is – I consider myself blessed to share in executing that grand vision."

A camp counselor in his youth,

## GARTH BROOKS

ASK ME HOW I KNOW



*"Ask Me How I Know? You see it in the live show and Garth delivers real emotion that connects with core country fans."*

**TIM ROBERTS** VP Country Programming, CBS Radio and VP Programming, CBS Detroit

*"This is the one we've been waiting for since October 2007."*

*This is a HIT, Ask Me How I Know."*

**GATOR HARRISON** iHeartCountry Brand Coordinator, SVP Programming, iHeartMedia Nashville

**MOST ADDED**  
MEDIABASE AND BILLBOARD!

**67**

**FIRST WEEK STATIONS**  
INCLUDING NEW YORK, CHICAGO, ATLANTA, TAMPA, KANSAS CITY, HOUSTON, DETROIT, DENVER, PHILADELPHIA, NASHVILLE, SALT LAKE CITY, MINNEAPOLIS, MIAMI, SEATTLE, PORTLAND ...AND MORE!

**#AskMeHowIKnow**

**PEARL**  
RECORDS



A promotional photograph of two men standing in a doorway. The man on the left is wearing a brown jacket over a dark shirt and dark pants. The man on the right is wearing a dark blue button-down shirt and jeans with a brown belt. They are both looking towards the camera.

# HIGH VALLEY

SHE'S WITH ME

**IMPACTING 4.17**

ALREADY  
OVER 2.6 MILLION STREAMS  
OVER 1.5 MILLION YOUTUBE VIEWS





Brown was profoundly affected by a camp integrating able-bodied, underprivileged and disabled kids. His vision grew to encompass a world-class facility employing and developing the best approaches. CSG is currently in the core essentials phase: lodging, the aquatics center and dining hall.

The state-of-the-art dining hall can serve as many as 350 people at one time and has already hosted a Cattle Baron's Ball for the American Cancer Society and events for Indian Motorcycles and Mercedes Benz USA. A shade pavilion with an outdoor commercial kitchen overlooks the garden. Temporary barracks are in place until permanent lodges are built. And a performing stage and campfire area have already been featured in



Tree House

Zac Brown Band videos "Sweet Annie" and "Goodbye In Her Eyes."

Pete Nelson from Animal Planet's Tree House Masters contributed to a tree house well beyond the structures found in an average back yard. Describing it as "a horseshoe crab in the air," Dodd says its focus is music until a dedicated building is added. "Kids love it. There's a definite 'wow' factor and that's what they go home and share with their friends and family. It's also an ideal corporate strategy venue with an incredible circular meeting table in the middle that lifts into the ceiling and out of the way for other functions."

For two years CSG has run fall mini-camps hosting 50 kids over five weekends. Full summer camp will begin in summer 2018 upon completion of the first lodge, which will house 128 campers. Construction begins in

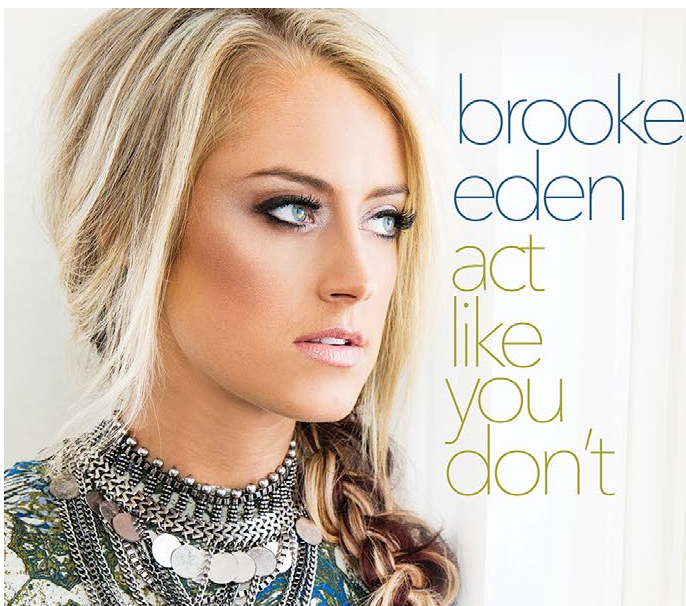


Tree House Interior



**Speak Attack:** Sony's Tim McGraw, Faith Hill and the Arista and Sony team celebrate a big add day. Pictured (l-r) are Steve Hodges, Luke Jensen, Jenny Shearin, Abi Fishbone, McGraw, Hill, Ali O'Connell, Lauren Thomas, Josh Easler, Rusty Sherrill and Randy Goodman.

©2017 Country Aircheck™ — All rights reserved. Sign up free at [www.countryaircheck.com](http://www.countryaircheck.com). Send news to [news@countryaircheck.com](mailto:news@countryaircheck.com)



## TOP 10 MOST ADDED in CA!!!

**15 Adds in last 2 Weeks**

**8 NEW ADDS TW:**

KWOF/Denver, KWNR/Las Vegas  
WWYZ/Hartford, KHEY/El Paso  
WEZL/Charleston, WWQM/Madison  
WGTY/York, KUAD/Ft. Collins

Over **7.8 MILLION** Spotify Streams!!

**ADD NOW**





# JACOB DAVIS

## “WHAT I WANNA BE”

ONE OF THIS WEEK'S MOST ADDED

# 27

FIRST WEEK STATIONS



## THANK YOU COUNTRY RADIO

NOW PLAYING ON

WEBG KKGO WDSY WPGB KMIN WSOC KRTY WYCD KMPS  
WMIL WHKO WCOL WGNA WGH KSKS WIRK KCYE WPOR  
KUPL WUSH WJVC KSOP WOGI KJUG WKLI KHGE WQHK



Spotify



“What I Wanna Be” is a bonafide HIT! Jacob brings the fun and energy to this song and his live performances. He’s Black River’s next rising star”

**-Matty Jeff, Brand Manager // WGNA**

BLACK RIVER  
ENTERTAINMENT

# COUNTRY AIRCHECK

## OFF THE RECORD: BAILEY BRYAN



Bailey Bryan

300/WAR's **Bailey Bryan** puts an industry spin on the artist interview:

**I grew up listening** to KMPS/Seattle and KKWF/Seattle. All I've ever wanted to do was sing, so now having gotten to talk to the people there and hear my songs on those stations is a literal dream come true.

**KMPS was the very first** station to play my song "Own It." I didn't get to hear

it on the radio until I went home for Thanksgiving break. I was in the car with my family and we were driving through a rough patch for the signal, about to drive into the mountains. Then through a bunch of static I heard the beginning of "Own It" and I was like, "Oh my goodness, turn up the radio!" It was the worst signal ever, but I faintly heard my song. And that's the first time I ever heard my song on the radio.

**My favorite memory** from radio tour was when I got to play my song at the Space Needle with KMPS. Right before I performed, my family surprised me. They acted like they weren't going to be able to make it, and then they showed up. It was the coolest, most surreal, weird, awesome dream experience ever.

**My favorite person to travel** with is my mom because she is a very comforting presence. I feel comfortable handing her my garbage if I don't know where to put it, and I can't do that to other people. (laughs)

**Every time I'm at a truck stop** I get a phone charger. On a regular basis, I either lose mine or I pay \$30 for one and it breaks, and then I have to get a new one.

**My last impulse buy** was a king-sized Kit Kat Bar – that I haven't shared with anyone, by the way.

**I wish I'd written** "Under The Bridge" by the Red Hot Chili Peppers. It's written in a way I try to write. It has a feeling and a musical thing I try to capture. There are a lot of unexpected lyrical and melodic things in that song.

**I can't go on the road** without essential oils and snacks – any kind of snack.

**I'd love to be stuck** in New York City. It has a really cool energy. You're never bored when you're in New York.

June. "Raising the remaining money to build the lodge is the focus of our energy," Dobbs says. "This isn't something Zac can or wants to do alone. This effort took a lot to get started and he seeded every bit of that and continues to with private shows he plays for a donation to the camp and \$1 from every ticket he sells. But now it's not just his money."

Between Brown's commitment and ongoing contributions from institutional investors, Dobbs estimates the camp is 65% to completion with phase one. "The second phase is where we get into dedicated buildings for art and music therapies, the chapel, welcome center and research center," he says. "The latter will have the latest technologies and connect to all kinds of labs and research facilities around the world. Ultimately, that's where the camp gives back in the work we'll do in the neuro-developmental space – Asperger's, Tourette's, ADHD, dyslexia and military-focused issues including traumatic brain injury and PTSD."

Military support applications are high on the agenda, including an established partnership with Chris Kyle's Frog Foundation and others in the works. "When we're not in summer camp mode we can host and facilitate conferences bringing the best and brightest together on these issues," Dobbs says. "Our lodging will even convert to hotel suite mode with bunks that fold up as sofas, desks and queen Murphy beds fold down."

Learn more about Camp Southern Ground [here](#). –Chuck Aly



High Ropes Course

## Chart Chat

Congrats to **Jon Pardi**, **Royce Risser**, **Bobby Young**, **David Friedman** and the **Capitol** promotion staff on scoring this week's No. 1 with "Dirt On My Boots." The song is the second chart-topper from *California Sunrise*.

And kudos to **Josh Easler** and **Arista** for nabbing 136 adds for **Tim McGraw & Faith Hill**'s "Speak To A Girl," topping this week's board. Special props to Midwest rep **Luke Jensen**, who closed out his 36-station region on the song in its first week. That's how you speak to job security!



Jon Pardi

©2017 Country Aircheck™ — All rights reserved. Sign up free at [www.countryaircheck.com](http://www.countryaircheck.com). Send news to [news@countryaircheck.com](mailto:news@countryaircheck.com)

# DREW BALDRIDGE

# REBOUND

feat. EMILY WEISBAND

## #47\*

**19 million + streams**

**Highway Finds tour**

**Latest markets:**  
Akron, Boise, Indy,  
Colorado Springs, Raleigh

**One. Serious. Hook**



TIM MCGRAW & FAITH HILL  
SPEAK TO A GIRL

---

**#1 Most Added** with  
**146 First Week Stations!**

**#19 BB - Highest debut of the year!**  
Debut at **#31** CA/MB



**ARISTA**  
NASHVILLE

**THANK YOU COUNTRY RADIO!**



## News & Notes

**Cumulus** has launched the Nash Country Pulse Poll series with **Katz Media** polling Country listeners nationwide for their 52nd ACM Awards predictions. The poll has Capital label mates **Keith Urban** and **Luke Bryan** neck-and-neck at 26% for winning Entertainer, and 63% of respondents plan to watch the show. See full results [here](#).

Cumulus **WZAT/Savannah, GA** flips from **Nash Icon's** national format to Hot AC as "102.1 the Sound." The station was part of the nationwide switch to Nash Icon in 2014 ([CAT 8/15/14](#)) and used all Westwood One talent, so no local staff were affected.

The 2017 *HoriPro Honors Golf Tournament* will honor the company's **David Hall** and BMI's **Jody Williams** at Henry Horton State Park outside Nashville April 28. The tournament also includes dinner and drinks, live music, awards, and a bonfire. Proceeds benefit the T.J. Martell Foundation. Contact **Courtney Crist** at 615-255-9837 or [here](#) for info.

**Kim McClean Music** has signed **Kevin Vermillion**, **Dylan Wright** and **Seth Rentfrow** of the band **Bear Creek Brothers**.

**PLA Media** has added **John Lomax III** to its publicity roster. The grandson of John Avery Lomax is planning projects celebrating the 150th anniversary of the elder Lomax first hearing cowboy songs on the Chisholm Trail including "Home On The Range" and "Get Along Little Dogies."

**Buddy Cannon**, **Dean Dillon**, **Dean Miller** and **Waylon Payne** will perform at the *Hank Cochran Pen Fund* benefit April 25. The show, which aids songwriters with cancer, takes place at Nashville's 3rd & Lindsley.

**Jeff Bates**, **Dave Berg**, **Danny Wells**, **Jeremy Bussey**, **Jayce Hein** and **Kent Maxson** will perform at **Charitable Hope Nation Radio's 9th Annual Evening With The Hit Makers** April 17 at Nashville's Listening Room. The show benefits **Live4Tay Foundation**, which provides financial support for families who have children with cancer.

## Artist News

Nash Icon's **Reba McEntire** will sing the National Anthem at the 27th Annual City of Hope Celebrity Softball Game June 10 in Nashville. More [here](#).

**The Band Perry** will headline the *St. Jude Rock 'n' Roll Nashville Marathon* April 29.

**Randy Rogers** will emcee the grand opening of new baseball stadium **The Depot at Cleburne Station**, home of the Cleburne Railroaders, May 28 in Cleburne, TX.

**Jack Ingram** will headline the *Texas Country Music Cruise* Sept. 3-10. Details [here](#).

**Jeannie Seely** was recognized by the State of Tennessee with a House Joint Resolution as she celebrates her 50th anniversary as a member of the *Grand Ole Opry*.

## The Week's Top Stories

Full coverage in the archives at [countryaircheck.com](#)

**Chip Alredge** joined **Cumulus/Shreveport** as OM (3/21).

**Mimi Wheeler** named MD & Dir./Promotions at **WQDR/Raleigh** (3/21).

**JJ Ryan** returned to Oklahoma at **KXXY** (3/22).

**Entercom** and **CBS Radio** identified potential stations for spin off (3/22).

**EJ Foxx** crossed the street for **WKHI/Salisbury-Ocean City, MD** (3/22).

**Drew Bland** moves to **KKWF/Seattle** as PD (3/24).

## True Crime Radio On WPAP

(continued from page 1)

Charles Wooten, who called SVP/Programming John Lund. Rushing to the station, they broke into programming on all five of the cluster's stations for the next 50 minutes.

First, Ford was interviewed on-air, describing the vehicle and suspects as well as noting the potential of the rifle to be involved. A family listening to WPAP spotted the described GMC Terrain pulling in to a local Walmart parking lot. The listener followed the vehicle, confirmed the tags matched the description and called 911. Officers were immediately dispatched.

Meanwhile, a mother with two children in her car was trapped in a drive-thru lane in sight of the suspects' vehicle. She was also listening and called in to the station as police arrived. Fearfully, she described to Collins and the listening audience as officers surrounded the vehicle with weapons drawn. Collins tried to calm her as she told what was happening. Wooten, who was monitoring law enforcement radio channels, was able to confirm when the suspects were apprehended.

Soon, Bay County Sheriff Public Information Officer and radio vet Ruth Corley called the station to thank the broadcast team for their help, with Sheriff Ford chiming in via the WPAP hotline shortly thereafter. Ford even handed the phone over to the listener who called 911 to report the vehicle's location. Collins thanked him, calling the man a hero. "It's the guys out here with the guns and the vests on [police officers] that are the heroes," the man said. He went on to explain his father and grandfather had been in law enforcement in Georgia.

"As an air personality, I would be the first to admit it's about entertaining and making people laugh and forget about the bad day they had, but when a shooting or an emergency takes place we go into our iHeart emergency broadcast mode," Collins says, reflecting on Sunday's events. "I love our listeners and I'm thankful for our law enforcement officials."

The shooting victim remains in critical condition. Listen to a portion of Sunday's broadcast [here](#). Reach Collins [here](#).

—Paul Williams



Left to right: **Charlie Wooten**, **John Lund** and **Shane Collins**

**Lon Helton**, [lon@countryaircheck.com](mailto:lon@countryaircheck.com)

**Chuck Aly**, [chuck@countryaircheck.com](mailto:chuck@countryaircheck.com)

**Wendy Newcomer**, [wendy@countryaircheck.com](mailto:wendy@countryaircheck.com)

**Paul Williams**, [paul@countryaircheck.com](mailto:paul@countryaircheck.com)

(615) 320-1450



## February 2017 PPM Scoreboard

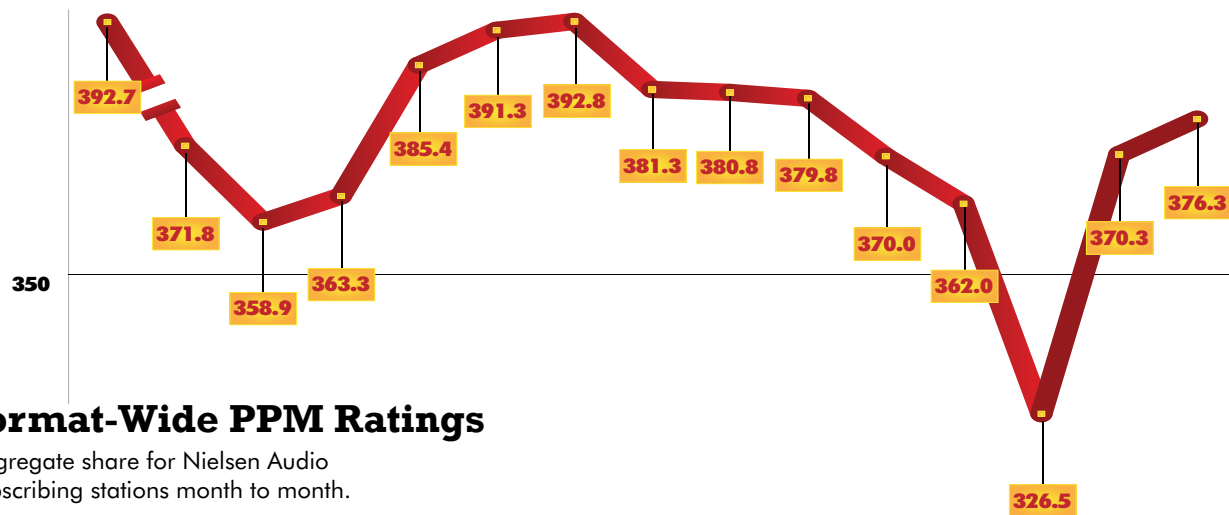
Country radio shares were up by 2% compared to last month and up 5% compared to February 2016. Of the 86 subscribing stations listed, 46 increased, 32 decreased and nine were flat.

The cume leader was Cumulus' **KPLX/Dallas** with 1,252,300.

Mt. Wilson's **KKGO/Los Angeles** was second with 1,223,000.

Legend: A "+" indicates a Classic Country outlet; a "^" designates co-owned Country stations in the metro; "t" indicates a tie; and a "\*" indicates a station best in that statistic. Ranks are among subscribers.

Station/City	January 6+ Share	Rank	February 6+ Share	Rank	January Cume	February Cume	Station/City	January 6+ Share	Rank	February 6+ Share	Rank	January Cume	February Cume
WKHX/Atlanta	3.8	12	4	10	613,600	655,200	WNSH/New York (Middlesex)	3.7	8t	3.6	8t	161,000	156,400
WUBL/Atlanta	2.8	15	2.9	16	605,000	651,400	WTKI/Milwaukee	3.1	13	4.4	11	241,900	240,600
KASE/Austin ^	5.5	4t	4.2	8	345,100	317,100	WMIL/Milwaukee	5.7	6t	5.4	7t	322,500	321,600
KVET/Austin ^	5.5	4t	5.7	5	317,400	337,500	KEEY/Minneapolis	4.7	12	5.6	6	564,300	604,200
KOKE/Austin	2.2	17t	1.7	19t	88,400	77,700	KMNB/Minneapolis	3.4	13	3.9	13	522,100	542,800
WPOC/Baltimore	5.9	4	7.1	3	400,400	460,000	WKDF/Nashville ^	3.7	12	3.3	13	223,700	230,300
WKLK/Boston	4.3	9t	4	10	663,300	621,700	WSIX/Nashville	6	6	5.5	7t	276,500	264,700
WBWL/Boston	2.2	17	2.2	17	475,100	438,800	WSM-FM/Nashville ^	5.6	8	5.5	7t	279,800	279,700
WCTK/Providence (Boston)	0.5	23	0.6	24	114,800	128,800	WSM-AM/Nashville	1.7	18	2.3	16	48,200	54,700
WKKT/Charlotte	5.7	3	5.9	2	407,800	482,500	WNSH/New York (Nassau)	2.2	20t	2.5	17t	151,400	170,300
WSOC/Charlotte	6.3	2	5.8	3t	400,200	422,300	WNSH/New York	2.7	13t	2.4	17	1,052,800	1,089,800
WEBG/Chicago	2.2	20t	2.2	20	757,700	783,800	WWKA/Orlando	5.2	8	5.4	8	252,800	262,400
WUSN/Chicago	2.2	20t	2.7	15t	939,200	941,000	KMLE/Phoenix	4.9	3	5	3	536,000	553,400
WNNF/Cincinnati	2	15	2.1	15	253,900	248,300	KNIX/Phoenix	3.6	12	3.2	13	593,800	559,300
WUBE/Cincinnati ^	6.8	3	7.6	3	450,800	452,300	WXTU/Philadelphia	3.7	12t	4	10	671,700	719,600
WYGY/Cincinnati ^	1.9	16	1.6	17	132,000	138,800	WDSY/Pittsburgh	3.8	10	4.5	8	320,400	347,300
WGAR/Cleveland	7.3	3	7.3	3	425,600	439,300	WPGB/Pittsburgh	4.5	8	4	10	242,500	251,100
WCOL/Columbus, OH	10.5	1	9.3	2	431,800	436,600	KWJJ/Portland	5.8	3	6.4	3t	378,100	429,800
KPLX/Dallas ^	5.9	1	6.2	1	1,203,200	1,252,300	KUPL/Portland	4.2	10	4.2	9t	365,700	372,900
KSCS/Dallas ^	3.6	8t	4.3	5	1,002,700	1,063,200	WCTK/Providence	7.5	4	7.8	4	365,200	386,400
KWOF/Denver	1.8	21	2	20t	243,100	262,100	WNCB/Raleigh	3.3	12t	3.3	14	212,800	238,000
KYGO/Denver	5.6	3	6.6	1	525,000	547,100	WQDR/Raleigh	6.9	4t	6.7	4t	325,000	359,800
WDRQ/Detroit	3.4	16	3.2	16	457,700	499,500	KFRG/Riverside	4.4	4	4.5	5	347,200	375,000
WYCD/Detroit	4.9	7t	4.9	8	714,900	731,800	KBEB/Sacramento	2.5	13t	2.3	17	178,300	196,500
WPAW/Greensboro	5.6	7	6.3	5	262,000	261,700	KNCI/Sacramento	5.5	4	5.2	4	308,400	308,600
WTQR/Greensboro	5.6	7	5.9	6	261,600	280,500	KNTY/Sacramento	2.3	16	2.4	16	183,300	179,200
WWYZ/Hartford	7.5	5	7.1	4	246,600	233,100	KEGA/Salt Lake City	1.3	20t	1.6	21	163,600	157,200
KILT/Houston	3.4	15t	3.6	16	948,200	1,022,600	KSOP/Salt Lake City ^	4.1	9	4	9	239,900	243,800
KKBQ/Houston ^	4.3	8	4.2	13	1,095,500	1,105,500	KSOP-AM/Salt Lake City ^ +	0.6	28t	0.6	28t	29,600	277,000
KTHT/Houston ^ +	2.3	18	2.4	20	541,800	538,600	KUBL/Salt Lake City	4.3	8	4.4	8	315,200	343,300
WFMS/Indianapolis	6.9	5	6.7	5	327,300	432,000	KAJA/San Antonio	5.6	4	4.4	8	538,000	501,500
WLHK/Indianapolis	5.2	9	4.7	9	316,400	320,600	KCYF/San Antonio ^	5.7	3	5.8	4	612,700	675,000
WGNE/Jacksonville	5.4	7	4.9	8	228,700	234,400	KKYX-AM/San Antonio ^ +	1.2	24	1.3	23t	137,300	95,700
WQIK/Jacksonville	12.8	1	12.3	1	278,000	293,200	KSON/San Diego	4.7	4t	5.2	2t	418,300	428,500
KBEB/Kansas City ^	4.1	9t	4.4	9	285,900	313,100	KRTY/San Jose	3.6	9	4.1	7t	167,900	196,500
KFKF/Kansas City ^	4.1	9t	5.3	3	300,000	368,500	KKWF/Seattle	2.5	18	2.4	18t	411,000	432,700
WDAF/Kansas City	3.6	14	3.9	13t	263,500	307,400	KMPS/Seattle	4	7t	3.9	8	499,400	502,800
KCYE/Las Vegas	3.2	12	3.1	14	233,000	221,300	KSD/St. Louis	3.5	15	3.5	15	421,800	475,700
KWNR/Las Vegas	5.1	4t	4.6	7	285,200	258,100	WIL/St. Louis	5.8	6	5.7	6	421,800	495,000
KKGO/Los Angeles	2.2	19	2.5	15	1,190,200	1,223,000	WFUS/Tampa	4.7	5	4.3	7t	471,800	432,500
WGKX/Memphis	5.8	7	6.6	5	186,000	202,000	WQYK/Tampa	4.4	7t	4.2	9	399,700	432,500
WLFP/Memphis	3.1	11	3.1	11	123,500	119,100	WMZQ/Washington	2.9	15	3.4	11	487,800	519,600
WKIS/Miami	2.1	17	2.2	17	449,400	418,700	WIRK/West Palm Beach	5.7	4	6.3	2	164,700	185,500



## Format-Wide PPM Ratings

Aggregate share for Nielsen Audio subscribing stations month to month.



## SEEK & EMPLOY

### Available Jobs

Here's a list of job seekers and open gigs. Not listed? Send info [here](#) and we'll include you in a future update:

Cox **WWKA/Orlando** seeks Dir. Branding & Programming. Apply [here](#).

**Ryman Hospitality Properties** seeks a Dir./Opry Programming & Artist Initiatives. Apply [here](#).

McKenzie River **KKNU/Eugene, OR** is looking for weekends/swing host. Send materials [here](#).

Brazos Valley **KORA/Bryan College Station** is looking for an afternoon host. Send MP3 and resume [here](#).

Townsquare **KAWO/Boise** needs an afternoon host. Send materials [here](#).

Cumulus **KSKS/Fresno** is looking for a PD. Send materials [here](#).

Townsquare **KKCN/San Angelo** is search for an on air PD. Send materials [here](#).

iHeartMedia's **KSD/St. Louis** is searching for a PD. Apply [here](#).

The **CMA** has an opening for an Executive Assistant/Marketing. Materials to HR Consultant **Sarah Pinson** [here](#).

Signal's **KHLR/Little Rock** has an opening for a morning host. Materials [here](#).

Emmis' **WLHK/Indianapolis** has an opening for an MD/air personality. Apply [here](#).

**Big Machine Label Group** is searching for a sales, marketing and interactive executive with at least three years of record retail sales experience. Materials [here](#).

GCC Bend's **KSJJ/Bend, OR** is searching for a morning show producer/air talent. Airchecks and resumes [here](#).

Cumulus' **WIVK/Knoxville** has an opening in mid-days. Apply [here](#).

Scripps' **WTKI/Milwaukee** is searching for a PD/on air host. Apply [here](#).

Mid-West Family's **WRTB/Rockford, IL** is searching for an afternoon personality. Reach **Steve Summers** about the position, which includes imaging duties, [here](#).

**Zimmer/Cookeville, TN** is searching for an engineer. Three years experience is required. Materials [here](#).

Zimmer's **KCLR/Columbia, MO** has an opening in middays. Airchecks and resumes [here](#).

Midlands' **WWNQ/Columbia, SC** has on-air openings for all dayparts. Airchecks and resumes to Managing Partner/Programming & Operations Keith Clark [here](#).

### Searching

#### •Cheri Cranford

Former GM Streamsound/Red Vinyl Music  
615 473-6837  
[cheri.cranford@comcast.net](mailto:cheri.cranford@comcast.net)

#### • Jordan Pettit

Former VP/Promotion WEA  
615 979-5203  
[jordan.pettit@gmail.com](mailto:jordan.pettit@gmail.com)

#### • Bethany Linderman

Former WGNA/Albany morning co-host  
727 460-2389  
[linderman.bethany@gmail.com](mailto:linderman.bethany@gmail.com)

#### • Mike Preston

Former KKWF/Seattle PD  
206 979-2500  
[plipreston@aol.com](mailto:plipreston@aol.com)

#### • Jeff Roper

Former KCYY/San Antonio APD/MD/morning host  
210-790-7099  
[ropershow@gmail.com](mailto:ropershow@gmail.com)

#### • Jim Day

Former WIL/St. Louis morning host  
314-258-4365  
[jimdayshow@gmail.com](mailto:jimdayshow@gmail.com)

#### •Wes McShay

Former Cumulus/Montgomery, AL OM/PD  
208-758-5435  
[wesgardipe@gmail.com](mailto:wesgardipe@gmail.com)

#### • Derek Gunn

Former Stoney Creek regional and KBUL/Reno, NV PD  
[Gunnderek@hotmail.com](mailto:Gunnderek@hotmail.com)

#### • Jeff Miles

Former WKLB/Boston and KCYY/San Antonio morning host  
469 667-3890  
[radiojeff@icloud.com](mailto:radiojeff@icloud.com)

#### • Brian Rickman

Former Townsquare/Tyler, TX OM/PD  
[brian.c.rickman@gmail.com](mailto:brian.c.rickman@gmail.com)

#### • Rosey Fitchpatrick

Former Dir./National Promotion  
[Roseyfitch99@gmail.com](mailto:Roseyfitch99@gmail.com)

#### • Wayne Manning

Former Cold River Regional  
801-361-2993  
[imaviator@yahoo.com](mailto:imaviator@yahoo.com)

#### • Kassidy Stewart

Former **Hart Media/Bullseye** Dir./Promotions & Content  
[kassidy@goncc.com](mailto:kassidy@goncc.com)

#### • Rick Kennis

Former **WGTY/York, PA** Dir./Promotions  
[rick@rickkennis.com](mailto:rick@rickkennis.com)



# MAREN MORRIS

I COULD USE  
A LOVE SONG

IMPACTING  
NOW!

71  
FIRST WEEK  
STATIONS

ACM NEW FEMALE  
VOCALIST OF THE YEAR!

THANK YOU COUNTRY RADIO!



© 2017 Sony Music Entertainment

LW	TW	Artist/Title (Label)	Total Points +/-	Points Total	Plays +/-	Plays	Audience +/-	Aud	Stations	ADDS
2	1	<b>JON PARDI</b> /Dirt On My Boots (Capitol)	28278	850	9201	262	64.012	1.615	159	0
3	2	<b>LUKE BRYAN</b> /Fast (Capitol)	25065	1177	8310	419	56.993	2.346	159	0
4	3	<b>LAUREN ALAINA</b> /Road Less Traveled (19/Interscope/Mercury) ✓	23391	2044	7744	651	53.17	4.782	159	0
5	4	<b>JASON ALDEAN</b> /Any Ol' Barstool (Broken Bow) ✓	22540	1948	7258	635	51.451	4.474	159	0
1	5	<b>MICHAEL RAY</b> /Think A Little Less (Atlantic/WEA)	21792	-6060	7124	-2042	50.813	-11.826	159	0
8	6	<b>KELSEA BALLERINI</b> /Yeah Boy (Black River) ✓	19018	1644	6070	515	41.99	2.83	159	2
6	7	<b>ERIC CHURCH f/R. GIDDENS</b> /Kill A Word (EMI Nashville)	18986	-2	6452	5	41.688	-1.007	159	0
9	8	<b>SAM HUNT</b> /Body Like A Back Road (MCA) ✓	18382	1905	5770	656	43.518	3.928	156	0
10	9	<b>JOSH TURNER</b> /Hometown Girl (MCA)	16974	1355	5662	448	39.126	3.09	158	0
11	10	<b>BRANTLEY GILBERT</b> /The Weekend (Valory)	16165	742	5470	293	35.664	0.628	158	0
14	11	<b>DIERKS BENTLEY</b> /Black (Capitol)	14261	1096	4534	298	33.223	2.348	159	1
13	12	<b>KENNY CHESNEY</b> /Bar At The End... (Blue Chair/Columbia)	14204	359	4728	59	32.822	1.058	159	1
15	13	<b>LUKE COMBS</b> /Hurricane (River House/Columbia)	14027	954	4669	308	30.71	2.49	157	2
16	14	<b>DAN + SHAY</b> /How Not To (Warner Bros./WAR)	12851	1077	4161	332	28.98	2.45	157	1
17	15	<b>BRETT YOUNG</b> /In Case You Didn't Know (BMLGR)	12683	1319	4166	471	27.062	4.135	157	0
7	16	<b>BRAD PAISLEY</b> /Today (Arista)	11540	-7359	3980	-2528	27.443	-16.972	159	0
18	17	<b>DARIUS RUCKER</b> /If I Told You (Capitol)	10829	370	3697	151	23.248	1.452	156	1
19	18	<b>TRENT HARMON</b> /There's A Girl (Dot/Big Machine)	10272	292	3427	70	21.081	1.619	155	0
20	19	<b>RASCAL FLATTS</b> /Yours If You Want It (Big Machine)	9577	758	3209	238	21.387	1.576	157	1
21	20	<b>LADY ANTEBELLUM</b> /You Look Good (Capitol)	9548	1009	3144	355	21.489	1.69	157	1
22	21	<b>KEITH URBAN f/C. UNDERWOOD</b> /The Fighter (Capitol)	8858	526	2803	125	21.729	2.886	150	0
24	22	<b>DYLAN SCOTT</b> /My Girl (Curb)	8546	1326	2801	412	16.171	3.981	146	5
23	23	<b>ZAC BROWN BAND</b> /My Old Man (SouthernGrnd/Elektra/WAR)	7849	544	2635	168	16.536	0.929	153	2
29	24	<b>FLORIDA GEORGIA LINE</b> /God, Your Mama, And Me (BMLGR)	7107	736	2170	184	15.844	2.962	136	4
26	25	<b>MIRANDA LAMBERT</b> /We Should Be Friends (RCA)	6893	138	2323	59	13.509	-0.036	146	1

©2017 Country Aircheck™ — All rights reserved. Sign up free at [www.countryaircheck.com](http://www.countryaircheck.com). Send news to [news@countryaircheck.com](mailto:news@countryaircheck.com)

# DYLAN SCOTT

## MY GIRL

### HUGE LOCAL RESEARCH

Digital Sales **+12%** (over 6k TW)

Over **160k** downloads!

Over **40 Million** On-Demand Streams







# **'TIL TOMORROW** **IMPACT DATE: 4/10** **18 MILLION** Streams || **30 Stations** Already Inked!

*"Strong hooks, standout tonality & unique phrasing... very impressive."*

**- GROVER COLLINS, PROGRAM DIRECTOR, WUBE/WYGY**

*"This Duo's sound is unique and uniquely COUNTRY. They are more than an 'act.' They are artists!"*

**- JON DIMICK, VP/PROGRAMMING OPERATIONS, CUMULUS MEDIA**

*"Dig these guys... 'Til Tomorrow' feels like a Hit Record. This could be fun."*

**- GATOR HARRISON, SVP/PROGRAMMING/BRAND COORDINATOR, IHEARTCOUNTRY**

*"Walker McGuire are twin sons from different mothers. So unique."*

**- KERRY WOLFE, SVP/PROGRAMMING, IHEART MEDIA - GREAT LAKES REGION  
PROGRAM DIRECTOR, WMIL**

**Don't Wait 'TIL TOMORROW to Add! ADD NOW!**





**MEDIABASE**

LW	TW	Artist/Title (Label)	Total Points	+/-	Points	Total Plays	+/-	Plays	Audience	+/-	Aud	Stations	ADDS
25	26	<b>CRAIG CAMPBELL</b> /Outskirts Of Heaven (Red Bow)	6878	-149	2611	-38	13.01	-0.436	147	0			
27	27	<b>JUSTIN MOORE</b> /Somebody Else Will (Valory)	6860	423	2334	103	13.183	1.477	150	3			
28	28	<b>COLE SWINDELL</b> /Flatliner (Warner Bros./WMN)	6688	264	2143	91	12.445	0.401	139	5			
33	29	<b>BLAKE SHELTON</b> /Every Time I Hear... (Warner Bros./WMN)	6025	1005	2118	314	13.551	3.399	140	5			
32	30	<b>RAE LYNN</b> /Love Triangle (Warner Bros./WMN)	5855	744	1935	264	9.903	1.479	121	1			
<b>AIRBORNE</b>		<b>TIM MCGRAW &amp; FAITH HILL</b> /Speak To A... (Arista) <b>DEBUT</b>	5687	5687	1842	1842	15.225	15.225	138	136			
31	32	<b>CHRIS LANE</b> /For Her (Big Loud)	5603	393	1895	80	8.485	1.187	142	4			
34	33	<b>BROTHERS OSBORNE</b> /It Ain't My Fault (EMI Nashville)	4597	295	1545	83	7.031	0.943	137	8			
36	34	<b>BILLY CURRINGTON</b> /Do I Make You Wanna (Mercury)	4577	543	1452	109	9.139	2.372	127	2			
37	35	<b>MIDLAND</b> /Drinkin' Problem (Big Machine)	4537	867	1429	308	7.533	1.477	131	10			
<b>AIRBORNE</b>		<b>OLD DOMINION</b> /No Such Thing As A Broken Heart (RCA)	3602	1016	1053	309	7.163	1.969	102	17			
38	37	<b>LOCASH</b> /Ring On Every Finger (Reviver)	3084	151	1083	66	4.906	0.028	110	1			
<b>AIRBORNE</b>		<b>BRETT ELDREDGE</b> /Somethin' I'm Good At (Atlantic/WMN)	3066	249	979	96	5.634	0.407	96	3			
40	39	<b>EASTON CORBIN</b> /A Girl Like You (Mercury)	2856	244	1015	73	3.76	0.382	98	3			
42	40	<b>SETH ENNIS</b> /Woke Up In Nashville (Arista)	2807	307	968	86	3.201	0.772	118	2			
<b>AIRBORNE</b>		<b>DRAKE WHITE</b> /Makin' Me Look Good Again (BMLGR)	2568	117	874	61	3.651	0.313	95	1			
<b>AIRBORNE</b>		<b>KIP MOORE</b> /More Girls Like You (MCA)	2483	170	858	45	3.244	0.15	96	3			
46	43	<b>MORGAN WALLEN</b> /The Way I Talk (Big Loud)	2265	94	827	44	3.818	0.146	86	2			
47	44	<b>WILLIAM MICHAEL MORGAN</b> /Missing (Warner Bros./WMN)	2084	-16	758	-13	3.193	-0.163	73	2			
49	45	<b>BIG &amp; RICH</b> /California (B&R/New Revolution)	1967	202	694	72	2.313	0.322	85	4			
44	46	<b>TUCKER BEATHARD</b> /Mamma And Jesus (Big Machine)	1860	-540	675	-192	2.431	-0.559	101	0			
50	47	<b>DREW BALDRIDGE f/E. WEISBAND</b> /Rebound (Cold River)	1639	14	764	20	1.671	-0.008	83	1			
Debut	48	<b>KANE BROWN</b> /What Ifs (RCA)	1509	55	519	22	1.981	0.191	63	1			
Debut	49	<b>ADAM CRAIG</b> /Just A Phase (Stoney Creek)	1482	107	533	60	1.798	0.193	68	2			
Debut	50	<b>DUSTIN LYNCH</b> /Small Town Boy (Broken Bow)	1425	446	495	155	2.197	0.545	71	13			

 ©2017 Country Aircheck™ — All rights reserved. Sign up free at [www.countryaircheck.com](http://www.countryaircheck.com). Send news to [news@countryaircheck.com](mailto:news@countryaircheck.com)

# NASHVILLE BOURBON DERBY

 100% OF PROCEEDS  
WILL BENEFIT

 T.J. Martell Foundation  
Livermore, Cancer and AIDS Research
**FTL SARCOMA FUND**

 ONLY 200  
TICKETS  
AVAILABLE  
FOR \$50  
EACH AT

## NASHVILLEBOURBONDERBY.COM

# TUESDAY MAY 2ND

 6 PM  
Till NINE THIRTY

 EAST IVY MANSION  
209 5TH STREET  
NASHVILLE, TN




**MEDIABASE**
**Country Aircheck Add Leaders**

<b>TIM MCGRAW &amp; FAITH HILL</b> /Speak To A Girl (Arista)	<b>136</b>
<b>MAREN MORRIS</b> /I Could Use A Love Song (Columbia)	<b>53</b>
<b>GARTH BROOKS</b> /Ask Me How I Know (Pearl)	<b>50</b>
<b>A THOUSAND HORSES</b> /Preachin' To The Choir (BMLGR)	<b>25</b>
<b>JACOB DAVIS</b> /What I Wanna Be (Black River)	<b>22</b>
<b>OLD DOMINION</b> /No Such Thing As A Broken Heart (RCA)	<b>17</b>
<b>DUSTIN LYNCH</b> /Small Town Boy (Broken Bow)	<b>13</b>
<b>CARLY PEARCE</b> /Every Little Thing (Big Machine)	<b>12</b>
<b>MIDLAND</b> /Drinkin' Problem (Big Machine)	<b>10</b>
<b>BROOKE EDEN</b> /Act Like You Don't (Red Bow)	<b>8</b>
<b>BROTHERS OSBORNE</b> /It Ain't My Fault (EMI Nashville)	<b>8</b>

**Country Aircheck Top Point Gainers**

<b>TIM MCGRAW &amp; FAITH HILL</b> /Speak To A Girl (Arista)	<b>5687</b> ✓
<b>LAUREN ALAINA</b> /Road Less Traveled (19/Interscope/Mercury)	<b>2044</b> ✓
<b>JASON ALDEAN</b> /Any Ol' Barstool (Broken Bow)	<b>1948</b> ✓
<b>SAM HUNT</b> /Body Like A Back Road (MCA)	<b>1905</b> ✓
<b>KELSEA BALLERINI</b> /Yeah Boy (Black River)	<b>1644</b> ✓
<b>JOSH TURNER</b> /Hometown Girl (MCA)	<b>1355</b>
<b>DYLAN SCOTT</b> /My Girl (Curb)	<b>1326</b>
<b>BRETT YOUNG</b> /In Case You Didn't Know (BMLGR)	<b>1319</b>
<b>LUKE BRYAN</b> /Fast (Capitol)	<b>1177</b>
<b>DIERKS BENTLEY</b> /Black (Capitol)	<b>1096</b>

**Country Aircheck Top Spin Gainers**

<b>TIM MCGRAW &amp; FAITH HILL</b> /Speak To A Girl (Arista)	<b>1842</b>
<b>SAM HUNT</b> /Body Like A Back Road (MCA)	<b>656</b>
<b>LAUREN ALAINA</b> /Road Less Traveled (19/Interscope/Mercury)	<b>651</b>
<b>JASON ALDEAN</b> /Any Ol' Barstool (Broken Bow)	<b>635</b>
<b>KELSEA BALLERINI</b> /Yeah Boy (Black River)	<b>515</b>
<b>BRETT YOUNG</b> /In Case You Didn't Know (BMLGR)	<b>471</b>
<b>JOSH TURNER</b> /Hometown Girl (MCA)	<b>448</b>
<b>LUKE BRYAN</b> /Fast (Capitol)	<b>419</b>
<b>DYLAN SCOTT</b> /My Girl (Curb)	<b>412</b>
<b>LADY ANTEBELLUM</b> /You Look Good (Capitol)	<b>355</b>

**Activator Top Point Gainers**

<b>TIM MCGRAW &amp; FAITH HILL</b> /Speak To A Girl (Arista)	<b>1880</b> ✓
<b>SAM HUNT</b> /Body Like A Back Road (MCA)	<b>1191</b> ✓
<b>OLD DOMINION</b> /No Such Thing As A Broken Heart (RCA)	<b>1066</b> ✓
<b>DAN + SHAY</b> /How Not To (Warner Bros./WAR)	<b>997</b> ✓
<b>BRETT YOUNG</b> /In Case You Didn't Know (BMLG)	<b>847</b> ✓
<b>KELSEA BALLERINI</b> /Yeah Boy (Black River)	<b>829</b>
<b>MIDLAND</b> /Drinkin' Problem (Big Machine)	<b>813</b>
<b>DYLAN SCOTT</b> /My Girl (Curb)	<b>765</b>
<b>LUKE COMBS</b> /Hurricane (River House/Columbia)	<b>736</b>
<b>JOSH TURNER</b> /Hometown Girl (MCA)	<b>608</b>

**Activator Top Spin Gainers**

<b>TIM MCGRAW &amp; FAITH HILL</b> /Speak To A Girl (Arista)	<b>388</b>
<b>SAM HUNT</b> /Body Like A Back Road (MCA)	<b>255</b>
<b>DAN + SHAY</b> /How Not To (Warner Bros./WAR)	<b>200</b>
<b>OLD DOMINION</b> /No Such Thing As A Broken Heart (RCA)	<b>195</b>
<b>KELSEA BALLERINI</b> /Yeah Boy (Black River)	<b>176</b>
<b>DYLAN SCOTT</b> /My Girl (Curb)	<b>167</b>
<b>BRETT YOUNG</b> /In Case You Didn't Know (BMLGR)	<b>158</b>
<b>LUKE COMBS</b> /Hurricane (River House/Columbia)	<b>140</b>
<b>MIDLAND</b> /Drinkin' Problem (Big Machine)	<b>135</b>
<b>LAUREN ALAINA</b> /Road Less Traveled (19/Interscope/Mercury)	<b>126</b>

**Country Aircheck Top Recurrents**

<b>LITTLE BIG TOWN</b> /Better Man (Capitol)	<b>14419</b>
<b>BLAKE SHELTON</b> /A Guy With A Girl (Warner Bros./WMN)	<b>13377</b>
<b>DUSTIN LYNCH</b> /Seein' Red (Broken Bow)	<b>10699</b>
<b>BRETT ELDREDGE</b> /Wanna Be That Song (Atlantic/WMN)	<b>10182</b>
<b>CHRIS YOUNG f/V. GILL</b> /Sober Saturday Night (RCA)	<b>10098</b>
<b>FLORIDA GEORGIA LINE f/T. MCGRAW</b> /May We All (BMLGR)	<b>10082</b>
<b>THOMAS RHETT</b> /Star Of The Show (Valory)	<b>9835</b>
<b>KEITH URBAN</b> /Blue Ain't Your Color (Capitol)	<b>7705</b>
<b>BILLY CURRINGTON</b> /It Don't Hurt Like It Used To (Mercury)	<b>7322</b>
<b>CARRIE UNDERWOOD</b> /Dirty Laundry (19/Arista)	<b>6939</b>



## COUNTRY AIRCHECK ACTIVITY

**BIG & RICH**/California (B&R/New Revolution)

Moves 49-45\*

1967 points, 694 spins

4 adds: **KBEB, KKWF, KWOF, WPAW**

**TUCKER BEATHARD**/Mamma And Jesus (Big Machine)

Moves 44-46

1860 points, 675 spins; no adds

**DREW BALDRIDGE f/E. WEISBAND**/Rebound (Cold River)

Moves 50-47\*

1639 points, 764 spins

1 add: **WQMX**

**KANE BROWN**/What Ifs (RCA)

Debuts at 48\*

1509 points, 519 spins

1 add: **WYCD**

**ADAM CRAIG**/Just A Phase (Stoney Creek)

Debut 49\*

1482 points, 533 spins

2 adds: **WMZQ, WQMX**

**DUSTIN LYNCH**/Small Town Boy (Broken Bow)

Debuts at 50\*

1425 points, 495 spins

13 adds: **WXTU, WBWL, KSON, KBEB, WCTK, WIRK, WSSL, WCTO\*, KHEY, WXCX, WUSY, KJUG, KXIX**

**JACKIE LEE**/Getting Over You (Broken Bow)

1367 points, 513 spins; no adds

**REBA MCENTIRE**/Back To God (Nash Icon/Valory)

1310 points, 365 spins

3 adds: **KSCS\*, KIZN\*, W1MC\***

**RYAN KINDER**/Close (Warner Bros./WMN)

1235 points, 411 spins; no adds

## ADD DATES

### April 3

**LITTLE BIG TOWN**/Happy People (Capitol)

**THOMAS RHETT f/MAREN MORRIS**/Craving You (Valory)

### April 10

**CANAAN SMITH**/Like You That Way (Mercury)

**WALKER MCGUIRE**/Til Tomorrow (Wheelhouse)

**CHARLIE WORSHAM**/Cut Your Groove (Warner Bros./WAR)

### April 17

**HIGH VALLEY**/She's With Me (Atlantic/WEA)

**SARABETH**/I Want It That Way (Circle S)

**DELTA RAE**/A Long And Happy Life (Valory)

**JERROD NEIMANN**/God Made A Woman (Curb)

Send yours to [adds@countryaircheck.com](mailto:adds@countryaircheck.com)

## CHECK OUT 3/31



**Trace Adkins** *Something's Going On* (Wheelhouse)

Adkins' 12th studio album and Wheelhouse debut encompasses 12 songs, among them single "Watered Down." Songwriter credits include Terry McBride, Brett Beavers, Tyler Farr, Shane McAnally, the late Andrew Dorff, Craig Campbell and Phil O'Donnell. Mickey Jack Cones produced.



**Rodney Crowell** *Close Ties* (New West)

Bookended by "East Houston Blues" and "Nashville 1972," *Close Ties* offers a total of 10 tracks including a duet with Sheryl Crow called "I'm Tied To Ya," and "It Ain't Over Yet," featuring his ex-wife Rosanne Cash and The Civil Wars' John Paul White.



**The Mavericks** *Brand New Day* (Mono Mundo Recordings-Thirty Tigers)

The band's ninth album is their first fully independent self-release. Titles include "Rolling Along," "Easy As It Seems," "The Goodnight Waltz" and "I Wish You Well," a farewell to lead singer Raul Malo's late father.

## EDUCATING STUDENTS THROUGH MUSIC

A unique partnership among Metro Nashville Public Schools, Mayor Megan Barry, the CMA and Nashville music community to ensure quality music education for all students.











**MUSIC MAKES US**  
*inspire. create. perform.*



METRO  
NASHVILLE  
PUBLIC  
SCHOOLS

[musicmakesus.org](http://musicmakesus.org)



LW	TW	Artist/Title (Label)	Points	+/-	Points	Plays	+/-	Plays	Stations	Adds
3	1	 <b>LUKE BRYAN</b> /Fast (Capitol)	11651		607	2345		121	52	0
1	2	<b>JON PARDI</b> /Dirt On My Boots (Capitol)	11290		-407	2308		-92	51	0
4	3	 <b>LAUREN ALAINA</b> /Road Less Traveled (19/Interscope/Mercury)	11018		468	2253		126	52	0
5	4	 <b>JASON ALDEAN</b> /Any Ol' Barstool (Broken Bow)	10157		128	2053		69	50	0
2	5	<b>MICHAEL RAY</b> /Think A Little Less (Atlantic/WEA)	9922		-1380	1957		-328	51	0
7	6	 <b>KELSEA BALLERINI</b> /Yeah Boy (Black River)	9118		829	1845		176	52	0
8	7	 <b>JOSH TURNER</b> /Hometown Girl (MCA)	8428		608	1718		118	51	0
10	8	 <b>SAM HUNT</b> /Body Like A Back Road (MCA) ✓	8374		1191	1655		255	52	1
9	9	 <b>BRANTLEY GILBERT</b> /The Weekend (Valory)	7677		297	1542		65	49	0
11	10	 <b>DIERKS BENTLEY</b> /Black (Capitol)	7246		234	1496		61	52	0
13	11	 <b>LUKE COMBS</b> /Hurricane (River House/Columbia)	7203		736	1416		140	52	0
12	12	 <b>KENNY CHESNEY</b> /Bar At The End Of The World (Blue Chair/Columbia)	6992		15	1383		-11	51	0
14	13	 <b>LADY ANTEBELLUM</b> /You Look Good (Capitol)	6190		487	1184		86	51	0
18	14	 <b>DAN + SHAY</b> /How Not To (Warner Bros./WAR) ✓	5706		997	1158		200	51	1
15	15	 <b>DARIUS RUCKER</b> /If I Told You (Capitol)	5680		496	1140		78	51	1
19	16	 <b>BRETT YOUNG</b> /In Case You Didn't Know (BMLGR) ✓	5477		847	1131		158	50	1
20	17	 <b>KEITH URBAN f/C. UNDERWOOD</b> /The Fighter (Capitol)	5003		384	960		66	51	0
16	18	 <b>RASCAL FLATTS</b> /Yours If You Want It (Big Machine)	4965		181	968		30	51	1
17	19	 <b>TRENT HARMON</b> /There's A Girl (Dot/Big Machine)	4825		43	927		11	49	0
21	20	 <b>MIRANDA LAMBERT</b> /We Should Be Friends (RCA)	4174		30	825		-7	49	0
22	21	 <b>ZAC BROWN BAND</b> /My Old Man (SouthernGrnd/Elektra/WAR)	4148		176	822		22	52	0
23	22	 <b>FLORIDA GEORGIA LINE</b> /God, Your Mama, And Me (BMLGR)	3708		341	732		69	49	3
24	23	 <b>BLAKE SHELTON</b> /Every Time I Hear That Song (Warner Bros./WMN)	3440		177	657		40	46	1
25	24	 <b>JUSTIN MOORE</b> /Somebody Else Will (Valory)	3401		296	629		50	43	0
28	25	 <b>COLE SWINDELL</b> /Flatliner (Warner Bros./WMN)	2922		328	582		71	47	2
27	26	<b>CRAIG CAMPBELL</b> /Outskirts Of Heaven (Red Bow)	2884		-48	539		-18	37	0
32	27	 <b>DYLAN SCOTT</b> /My Girl (Curb)	2773		765	565		167	41	10
33	28	 <b>MIDLAND</b> /Drinkin' Problem (Big Machine)	2534		813	426		135	35	5
30	29	 <b>BRETT ELDREDGE</b> /Somethin' I'm Good At (Atlantic/WMN)	2474		255	451		54	35	3
29	30	<b>BROTHERS OSBORNE</b> /It Ain't My Fault (EMI Nashville)	2264		-165	429		-10	42	0

©2017 Country Aircheck™ — All rights reserved. Sign up free at [www.countryaircheck.com](http://www.countryaircheck.com). Send news to [news@countryaircheck.com](mailto:news@countryaircheck.com)



**BROADCASTERS  
FOUNDATION OF  
AMERICA**

**When our broadcasting colleagues  
are in need, we're here to help.**

Learn how to get help or give back at

**[broadcastersfoundation.org](http://broadcastersfoundation.org)**

**@BroadcastersFDN**

LW	TW	Artist/Title (Label)	Points	+/-	Points	Plays	+/-	Plays	Stations	Adds
38	31	📶 <b>OLD DOMINION</b> /No Such Thing As A Broken Heart (RCA) ✓	2107		1066	388		195	31	9
31	32	<b>BILLY CURRINGTON</b> /Do I Make You Wanna (Mercury)	2096		-97	365		-11	34	1
Debut	33	📶 <b>TIM MCGRAW &amp; FAITH HILL</b> /Speak To A Girl (Arista) ✓	1880		1880	388		388	33	24
34	34	📶 <b>CHRIS LANE</b> /For Her (Big Loud)	1828		192	387		31	37	1
35	35	📶 <b>AARON WATSON</b> /Outta Style (Big)	1415		21	292		6	19	0
36	36	📶 <b>KIP MOORE</b> /More Girls Like You (MCA)	1328		142	220		32	19	1
39	37	📶 <b>RAE LYNN</b> /Love Triangle (Warner Bros./WMN)	1274		303	273		75	27	3
37	38	📶 <b>LANCO</b> /Greatest Love Story (Arista)	1154		51	149		6	10	1
40	39	📶 <b>EASTON CORBIN</b> /A Girl Like You (Mercury)	1028		77	197		16	22	1
47	40	📶 <b>LITTLE BIG TOWN</b> /Happy People (Capitol)	871		294	139		75	17	5
41	41	<b>LOCASH</b> /Ring On Every Finger (Reviver)	866		-31	163		-5	26	0
44	42	📶 <b>DUSTIN LYNCH</b> /Small Town Boy (Broken Bow)	814		232	112		28	8	1
42	43	<b>MORGAN WALLEN</b> /The Way I Talk (Big Loud)	751		-10	107		-3	12	0
43	44	📶 <b>JON PARDI</b> /Heartache On The Dance Floor (Capitol)	677		27	70		5	6	0
45	45	📶 <b>REBA MCENTIRE</b> /Back To God (Nash Icon/Valory)	660		80	122		11	8	0
59	46	📶 <b>MAREN MORRIS</b> /I Could Use A Love Song (Columbia)	645		302	107		59	7	6
49	47	📶 <b>BIG &amp; RICH</b> /California (B&R/New Revolution)	638		66	120		12	15	1
46	48	📶 <b>ERIC CHURCH</b> /Round Here Buzz (EMI Nashville)	620		40	62		4	1	0
58	49	📶 <b>DELTA RAE</b> /A Long And Happy Life (Valory)	474		104	48		11	2	0
50	50	<b>SETH ENNIS</b> /Woke Up In Nashville (Arista)	462		-75	95		-13	16	0
48	51	<b>CODY JOHNSON</b> /With You I Am (Cojo)	450		-122	106		-32	6	0
52	52	<b>ELI YOUNG BAND</b> /Skin And Bones (Valory)	440		-70	44		-7	1	0
54	53	📶 <b>KEITH WALKER</b> /Me Too (---)	435		7	83		1	8	0
53	54	📶 <b>RYAN GRIFFIN</b> /Back Seats & Burnt CDs (Ryan Griffin)	430		0	43		0	1	0
56	55	📶 <b>WILLIAM MICHAEL MORGAN</b> /Missing (Warner Bros./WMN)	404		0	82		0	8	1
57	56	📶 <b>CHUCK WICKS</b> /Whole Damn Thing (Blaster)	367		-7	75		0	6	0
Debut	57	📶 <b>DRAKE WHITE</b> /Makin' Me Look Good Again (BMLGR)	342		48	63		11	9	0
Debut	58	📶 <b>CHRIS LANE</b> /Let Me Love You (Big Loud)	340		20	34		2	1	0
55	59	<b>TUCKER BEATHARD</b> /Momma And Jesus (Big Machine)	323		-96	70		-18	11	0
Debut	60	📶 <b>SETH ENNIS</b> /Fast Girl (Arista)	310		30	31		3	1	0

©2017 Country Aircheck™ — All rights reserved. Sign up free at [www.countryaircheck.com](http://www.countryaircheck.com). Send news to [news@countryaircheck.com](mailto:news@countryaircheck.com)

# INTRODUCING COUNTRY DASHBOARD

powered by  
**AIRCHECK**  
partnering with KMG Networks, Harris Media and AdLarge Media

**CLICK HERE FOR DETAILS**

A customizable and  
interactive dashboard  
delivering up-to-the  
minute news, audio,  
traffic, weather, sports  
and other information  
directly to radio studios.