



December 30, 2013, Issue 377

Keeping Score: December PPM

The complete December PPM Scoreboard is on page 10, but the short version is that Country radio took a slight hit, thanks in part to seasonal programming. That's not to say there weren't some presents under the tree, however, including market leaders **WPOC/Baltimore**, **KFKF/Kansas City**, **WMIL/Milwaukee**, **WQDR/Raleigh**, **KAJA/San Antonio** and **KSON/San Diego**. Also, **KKBQ/Houston** took over as cume leader with 1,258,500. Last month's cume leader, **WUSN/Chicago**, was a close second with 1,243,700. Here are some reports from the programming frontlines:

WQDR/Raleigh PD Lisa McKay: It was a clean sweep for December and the three-month Persons 25-54 rolling average for 'QDR. We are so grateful for the loyalty of our listeners and will continue to deliver with every song, every break, every day.

WLHK/Indianapolis OM/PD Bob Richards: Like the Indianapolis Colts, Hank FM finished December with huge momentum as the No. 1 Country station in Indy among Persons 18-34, 18-49, Women 25-54, and many other demos. We're looking forward to a huge 2014.

KMNB/Minneapolis OM/PD Rob Morris: For the second straight month, the New BUZN@102.9 is the No. 1 Country in the Twin Cities among Persons 25-54, 18-49, 18-34 and 12-17. BUZN is No. 2 in the market among Persons 18-34, and No. 3 among Persons 18-49. Growth over December 2012 is up 96% among Persons 18-34, 65% among Persons 18-49 and 49% among Persons 25-54. What a great way to end the year!

WDSY/Pittsburgh OM/PD Mark Anderson: Team Y108 caps off a great 2013 with yet another strong performance, ranking No. 3 Persons 25-54 total week in December, and No. 2 Persons 25-54 total week for the October-November-December quarter.

WDAF/Kansas City PD Wes Poe: We're very pleased to see that we landed No. 1 Country in Persons, Men and Women 18-34, 18-49, and 25-54. We're also top five overall in those demos. It's been years since WDAF has seen this kind of consistent strength. I'm lucky to be here with this great team.



All Gang Sign: The Country Aircheck crew wishes you and yours a safe and happy New Year. Pictured (l-r) are Chuck Aly, Russ Penuell, Jess Wright, Kelley Hampton, Paige Estes, April Johnson and Lon Helton.

Roper To Myrtle Beach

Former Cox KCYY/San Antonio APD/MD/morning host **Jeff Roper** has joined Quantum's **WGTR/Myrtle Beach, SC** as PD/morning host. His new morning show also airs on the company's **WYNR/Brunswick, GA**. Roper replaces **Dave Fields**, who has left the company. Joining Roper on the new show is producer **Adam Dellinger**, who served in the same capacity at KCYY. Roper exited 'CYY after just more than a year in May ([CAT 5/3](#)). Prior stops include **WTQR/Greensboro**, **WSOC/Charlotte** and **WCOS/Columbia, SC**. Congratulate him [here](#).



Jeff Roper

©2013 Country Aircheck™ — All rights reserved. Sign up free at www.countryaircheck.com. Send news to news@countryaircheck.com



KEITH URBAN

"COP CAR"



ADD DATE: 1/13/14*

***Unless you don't want to wait!!**

Capitol
A UNIVERSAL MUSIC COMPANY

HIT RED
HR
RECORDS

BORMAN
PROMOTIONS

Robinson Leaves Townsquare

Townsquare's *Taste Of Country Nights* host **Jeremy Robinson** has exited after more than a year ([CAT 7/2/12](#)). "I'm excited to be looking for my next opportunity and am eagerly searching for a company whose objective is to serve the audience and put together a product that not only serves the P1s, but can successfully integrate digital and create revenue all at the same time," he says. *Taste Of Country Nights* is heard on more than 50 of the company's 64 Country stations. Prior to joining Townsquare, Robinson hosted the Citadel-syndicated *The Jeremy Show* from 2008-11. Other stops include KSCS/Dallas and KPLX/Dallas. Reach him [here](#). No word on his replacement at Townsquare.

**Jeremy Robinson**

Crow PD At KTFW

LKCM Radio Group **KRVF/Corsicana, TX** GM/afternoon personality **Mike "Crowman" Crow** has joined the company's **KTFW (92.1 Hank FM)/Dallas** as PD/afternoon personality. He replaces **Andy Meadows**, who remains as OM. It's a return for Crow, who served as PD/morning host from 1999-2009. Reach him [here](#); listen to Hank [here](#).

**Mike Crow**

Ft. Pierce Adds Country

Treasure And Space Coast flipped Talk **WPHR/Ft. Pierce** to Country as "Hot Country 94.7" last week (12/24). The station, which was purchased from Clear Channel's Aloha Trust in September, competes with CC's market-leading WAVV. It's currently running jockless and commercial-free. Former WKWS/Charleston, WV PD/PM driver **John Anthony** will be on the job as PD Jan. 6 and will have more info on staffing needs then. Reach him [here](#). More [here](#).



ADD DATES

JANUARY 6

BLAKE SHELTON/Doin' What She Likes (Warner Bros./WAR)

JANUARY 13

BRANTLEY GILBERT/Bottoms Up (Valory)

KAYLA CALABRESE/This Is How It Feels (GTR)

KEITH URBAN/Cop Car (Capitol)

JANUARY 21

LEXI JAMES/Stop (Spin Doctors)

RASCAL FLATTS/Rewind (Big Machine)

CHRIS YOUNG/Who I Am With You (RCA)

JANUARY 27

JOE NICHOLS/Yeah (Red Bow)

FEBRUARY 3

JAKE OWEN/Beachin' (RCA)

Black River Floats Brady

Former Big Machine Label Group intern **Stephen Brady** has joined **Black River** as Research Analyst. "Steven is one of the brightest minds that I have met in this business," says GM **Greg McCarn**. "His extraordinary skills, coupled with his desire to bring science and understanding to the art and soul of making and selling music will be a significant contribution." Reach him [here](#).

**Stephen Brady**

2013 State Of Country Radio

According to **Nielsen's** analysis of PPM data, 2013 has been the biggest year ever for Country radio, especially with younger demos.

Country's share of radio listening has been setting records, peaking with double digit share increases over the summer. Nielsen credits that growth to several years of increased listening

©2013 Country Aircheck™ — All rights reserved. Sign up free at www.countryaircheck.com. Send news to news@countryaircheck.com

TOP 5 FAVORITE NEW SONG IN ALL KEY DEMOS

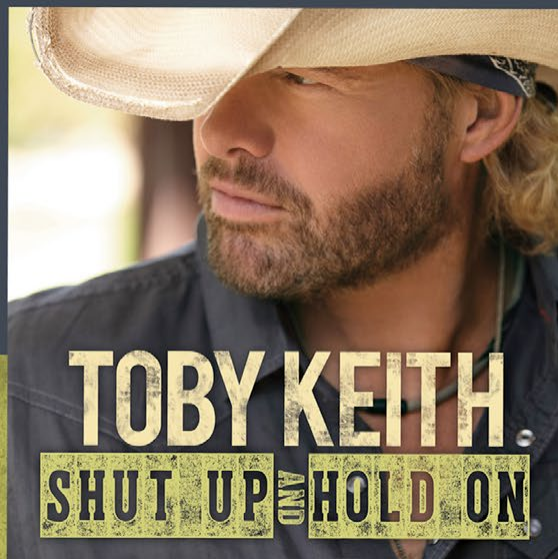
#3 Favorite New Song Active Pls 18+ #2 Favorite New Song Females 25-54

#4 Favorite New Song Males 18-34

BULLSEYE AUDIENCE RESEARCH



ALREADY TOP 20 at Callout with Listeners in Indianapolis, Kansas City, Omaha, Charlotte, Philadelphia, Pittsburgh, Rochester, Roanoke, Denver, Houston, Phoenix & Portland



TOBY KEITH
SHUT UP AND HOLD ON

A close-up photograph of a man wearing a black cowboy hat and a light blue denim shirt. He has a goatee and is looking down. A black and white patterned bandana is visible around his neck. The background is plain white.

NEW YEAR. NEW MCGRAW.

NEW MUSIC 01.13.14

by 18-to-34-year-olds, showing a 25% jump in shares since November 2011.

Nationally, Country has been the No. 2 format overall, behind Pop CHR in both 18-34 and 25-54, every month this year. For the year, Country ranks second 18-34 and third 25-54.

As for when people are listening, you probably won't be surprised to know Nielsen's data shows most listening happens when people are away from home. What may surprise you is that the majority of time spent listening away from home is in afternoon drive, followed closely by middays, with morning drive a distant fourth, even behind nights. Morning drive leads in at-home listening, followed by nights.

Christmas music seems to be the format killer. While AC stations normally take the lead in going "all-Christmas" and have a 76% share increase to show for it, Country takes a bigger hit than any other format. Last year's PPM data shows a 13% decline in overall shares from November to the Holiday book.

The good news is, after a short break for holiday listening, Country radio is poised to keep its upward trajectory going in 2014 and close the gap on the No. 1 spot.

WIVK Honored By TN Radio Hall

Cumulus' **WIVK/Knoxville** will be honored as the **Tennessee Radio Hall Of Fame's** 2014 Station Of The Year during the organization's induction banquet May 3 in Murfreesboro, TN. "This honor is really a testament to the amazing team, both on-air and off-air, at WIVK," says PD **Bob Raleigh**. "A lot of the credit goes to former WIVK GM **Bobby Denton**, who really set the course for this station years ago. I'm extremely proud of the people here and admire the work they do on a daily basis." Individual tickets are \$65; info [here](#). See a full list of 2014 honorees [here](#).



Gig Alerts

Cumulus SVP/Programming **Mike McVay** is seeking a PD for the company's newly flipped **WDRQ (Nash-FM)/Detroit**. "We're looking for America's best Country program director to lead the charge for this major market Country station into what

OFF THE RECORD: SUZY BOGUSS



Suzy Bogguss

Loyal Dutchess Records' **Suzy Bogguss** gives an industry spin on the artist interview:

I grew up listening to WLS/Chicago and WLLR in the Quad Cities, back in the album-oriented days.

The first time I heard myself on the radio might have been 1981 while driving up to Minnesota. I had taken a record to Garrison Keillor and was on my way up to open at a folk club up there when I heard "Ghost Riders In the Sky." The funny thing is, it's a long drive, I was drinking a lot of coffee and pretty zoned out when it came on. I thought, "I know that song. Who does that?" I was trying to figure it out. Oh, duh. That's me!

"Somewhere Between" was my first charting single and the name of my first album, but Capitol long ago put it out to pasture. I was wondering if I should recut it or do a live version. One day at sound check I was messing around with "Tonight The Bottle Let Me Down," which Merle Haggard also wrote, and started thinking about doing a couple of Haggard songs, then decided to do a whole album of them. *Lucky* is really about pointing everybody toward what an amazing songwriter Merle is.

I remember a whirlwind radio tour that started in New Orleans, went up through Mississippi and Alabama, back to Nashville to pick up my husband and went on to Louisville, Cincinnati and all of Ohio. In six days we visited 55 radio stations. I was so sick when I got home – completely lost my voice.

I can't walk out of a truck stop without a map. I have every kind of gadget, but we always have a map with us, too. There have been too many times playing an equestrian center or something that Google can't find it.

The most important thing on the road is my uniform. If I'm on tour for two weeks doing eight or 10 shows, I will take three costumes with me, what I'll wear to sound check, sweats for the car and all of it in one not-very-big-suitcase. I'll wear some boots and take a pair, and that's it. Keep it simple and I don't have to think about what I'm going to wear. It's my business suit. My uniform.

My favorite road companion is my husband. He's also my least favorite. He's really easy to travel with, but he's also one of those guys who loves to play car games. He has a whole bunch of horrible games like Hinkety-Pinkety, where you have to come up with two words that rhyme and have the same number of syllables. Luckily, now he's taken to stopping at Cracker Barrel for an audiobook. That shuts him up.

©2013 Country Aircheck™ — All rights reserved. Sign up free at www.countryaircheck.com. Send news to news@countryaircheck.com

YEAH

IMPACTING JANUARY 27TH

RED BOW
RECORDS

RASCAL FLATTS

◀◀ REWIND



MPE AVAILABLE 1/08
ADD DATE 1/20

**"THE SONG IS GREAT!!!! LOVE THE DIRECTION, TONE AND DELIVERY.
IT'S RASCAL FLATTS... WITH A FRESH SOUND AND TEMPO." - CLAY HUNNICUTT**
EXECUTIVE VP OF PROGRAMMING CLEAR CHANNEL MEDIA + ENTERTAINMENT

BRANTLEY GILBERT



“BOTTOMS UP”

ON YOUR DESK NOW!

ADD DATE 1.13



THE
VALORY
MUSIC
CO.

MY TUNES: MUSIC THAT SHAPED MY LIFE



**Natalie
Kilgore**

Dashboard Media's **Natalie Kilgore** discusses her most influential artists, concerts, songs and albums:

1. Rolling Stones/Paint It Black: I heard it for the first time when I was about eight or nine on a TV show. The ferocity and agony delivered in that song ... it was all over for me from there. I finally checked one of the biggest items off my bucket list when I saw them (sixth row!) this past May at the MGM Grand in Vegas.

2. Crystal Gayle, Hollywood, Tennessee:

When I was little, Mom would play the album on 8-track whenever she'd clean the house. I was mesmerized by Crystal's rich, sweet alto and the way she could manipulate her voice. I would sit by the stereo and belt out her songs and try to emulate her voice. (Hell, who am I kidding? I still do!)

3. Michael Jackson: Remember back in the '80s and '90s when his music videos premiered in primetime on network television? They were an event. Mom would make dinner early so the entire family could be waiting in front of the TV set for MJ's latest song and spectacle. The pure majesty of those videos – and the way they were promoted – are a big part of what made me want to be a part of the music industry.

4. Joan Baez: Dad loved her, and some of the earliest music I remember listening to at length was her soaring soprano on LP. "Diamonds And Rust" remains one of my favorite songs of all time and looking back, I suppose my love of songwriting stems from that story of lovelorn reflection.

5. U2, 360 Tour: With the infamous "claw" it was probably the most captivating concert experience I've had so far. Even with 50,000 people in the stadium, the show somehow still seemed intimate. The sound, staging, energy, lighting that seemed to reach to the heavens – even the banter – produced a show that was polished yet still seemed raw. I literally felt as if I'd lived in a two-hour bubble where no other world existed outside that stadium.

• **A highly regarded song or album you've never heard:** The Who, Tommy. (I know, I know.)

• **An "important" piece of music you just don't get:** Grateful Dead.

• **An album you played or listened to incessantly:** Patty Griffin, *Living With Ghosts* and *Flaming Red* have both been on repeat at my house for at least the last decade.

• **One obscure or non-country song everyone should listen to right now:** Diane Birch, *Speak A Little Louder* is one of the best albums of 2013. Also check out Zeke Duhon, one of the hottest young rock talents coming out of Nashville right now.

• **One item in your music collection you'd rather not admit to enjoying:** Celine Dion's debut album *Unison*.

will be an epic ratings battle," McVay says. Resume, ratings success, talent coaching experience and research knowledge should be sent [here](#). Include "Detroit – Nash" in the subject line.

Delmarva's **WXCY/Wilmington, DE** has openings for a night personality and a Coord./Marketing & Promotions. Nights had been voice tracked; Brittain Rew exited the Coord./Promotion post Friday (12/27). OM/PD **Brad Austin** is looking for "next level" ideas for the latter and "the guy or girl that will spend hours walking through the parking lot at a concert talking to listeners and converting new fans" for the former. Materials [here](#).

Cumulus' **KJJY/Des Moines** has an opening for a PD to replace **Bob O'Dell**, who will soon begin focusing solely on his duties as PD of Classic Rock sister KGGO. Airchecks and resumes to Cumulus Corporate PD **Greg Frey** [here](#). O'Dell will continue to handle the job until a replacement is found. Reach O'Dell [here](#).

JMJ's **KTPK/Topeka, KS** has an opening for a morning host and possibly a morning co-host following the departure of **Lani**

Raise a glass!

ELI YOUNG BAND

drunk last night



Toasting

**MAX SPINS
NOW!**

Novak. "[I'm] looking for talent with experience in mornings [that] knows the format," says PD **Roger Price.** "KTPK was No. 1 in the Topeka market in the last book." Airchecks and resumes [here](#). No word on Novak's future plans.

Radio News

Congratulations to Cumulus' **KJJY/Des Moines** on raising \$104,586 with its 15th Annual Holiday Radiothon (12/17-18) benefiting **Variety, The Children's Charity.** The total is a station record.

Outlaw Nation is offering its Southern Rock/Country **Outlaw Nation** format for barter. According to the company, "Our format is not syndication. We custom-produce it for each market, so it is presented live and local to the listener." Listen to an example [here](#). Contact GM **Josh Brown** for more info [here](#).

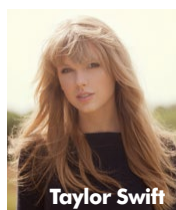
Nash Nights Hosts Guests

Although **Cumulus'** nationally syndicated **Nash Nights Live** won't officially launch until Jan. 6, the stars are aligning to get it started a little early. Starting Jan. 1, guest hosts joining **Shawn Parr** include **Dierks Bentley, Darius Rucker** and **Zac Brown.** **The Band Perry, Hunter Hayes, Eli Young Band, Danielle Bradbery, Jewel** and **Thomas Rhett** will also make appearances in the three days before the official start. The show will be distributed to all of the company's Country stations nationwide.



Artist News

Big Machine's **Taylor Swift** topped **DoSomething.org's** list of **Top 20 Celebs Gone Good** for the second year in a row for her charitable giving in 2013, including her \$100,000 birthday donation to the Nashville Symphony earlier this month (CAT 12/16), and for headlining a charity event benefiting the homeless. **Carrie Underwood** came in at No. 10 for her \$1 million tornado relief donation to the American Red Cross, and **Blake Shelton** is at No. 16 for his *Healing In The Heartland* tornado relief benefit show. See the full list [here](#).



In other Swift news, she was named Tennessean of the Year by the *Tennessean*, which lauded her for carrying "Nashville and its music all over the world," her aforementioned charitable endeavors and for being a role model. "If her success did nothing but move masses of kids toward music, thoughtfulness and self-worth, then she would have been plenty good for the world," the paper's Peter Cooper writes. Read more [here](#).

The **Zac Brown Band** and **Jake Owen** will be a part of the four-day **Bud Light Hotel** pre-Super Bowl concert event on a cruise ship docked in the Hudson River in New York. ZBB will join the **Foo Fighters** Feb. 1, and Owen will headline the pre-game show Feb. 2, which also features **Fall Out Boy.** The performances will not be televised and organizers are still determining whether they'll be streamed online. See the full lineup [here](#).



Zac Brown Band

CHECK OUT

- Jan. 14 **Jennifer Nettles** *That Girl* (Mercury)
- Jan. 14 **Jon Pardi** *Write You A Song* (Capitol)
- Jan. 14 **Roseanne Cash** *The River & The Thread* (Capitol/Blue Note)
- Jan. 14 **Charlie Farley** *Hog Heaven* (Average Joes/Backroad)
- Jan. 21 **Jenna Jentry** *Jenna Jentry (EP)* (Circle 4/Sony Red)
- Jan. 28 **North 40** *Sing Your Own Song* (Rhymetown)
- Feb. 4 **Eric Paslay** *Eric Paslay* (EMI)
- Feb. 4 **Moonshine Bandits** *Calicountry* (Average Joes/Suburban Noize)
- Feb. 11 **Eric Church** *The Outsiders* (EMI)
- Feb. 11 **Frankie Ballard** *Sunshine & Whiskey* (Warner Bros.)

Album release info to news@countryaircheck.com.

Merle Haggard, Kris Kristofferson, Willie Nelson and **Blake Shelton** will be part of a "Grammy Moment" during the 56th Annual Grammy Awards Jan. 26 in Los Angeles. Shelton is a nominee for Best Country Solo Performance for "Mine Would Be You" and Best Country Album for *Based On A True Story*. The others have each won multiple awards, though it will be Haggard's first time performing on the **CBS-TV** show. More [here](#).

Paris, IL named Dec. 22 "**Brett Eldredge Day**" to recognize his achievements in country music, his hometown values, and for putting Paris on the map. The town now has signs reading, "Home of Nashville Recording Artist Brett Eldredge."

The **Kenny Rogers Children's Center**, which provides occupational, physical and speech therapy services to children, was recently awarded a \$500,000 grant by the **Missouri Foundation For Health.** More on the center and its mission [here](#).

Crib Note

Congrats to The Green Room's **Mary Hilliard Harrington** and Red Light's **Ryan Harrington** on the Dec. 20 birth of daughter **Scarlett Jane.** She is the couple's first child. Send parenting tips [here](#).



Scarlett Jane

Chronicle: George Collier

Condolences to the family and friends of Aspiration Records Pres. and Platinum Records VP **George Collier**, who passed away Dec. 21 after a long illness. He was 69. Collier worked in promotion with MCA/Decca, Arista and Atlantic in the '60s and '70s, then moved to MCA Distribution in the '70s and '80s before becoming Dir./Marketing - Country Division for Capitol in 1985. He started Intersound Records in the '90s. He was laid to rest at Woodlawn Cemetery in Nashville Dec. 28. In lieu of flowers, the family requests donations to Kidney.org. **CAC**



December PPM Scoreboard

Here's **Nielsen Audio's** November (10/10-11/6) to December (11/7-12/4) PPM ratings scoreboard. Country radio was down, with overall shares decreasing 2.89%. Of the 81 subscribing stations which posted a 1.0 share or higher, 29 increased, 47 decreased and 5 were flat compared to last month.

The cume leader was Cox's **KKBQ/Houston** with 1,258,500. CBS Radio's **WUSN/Chicago** dipped to second with 1,243,700.

Legend: A "+" indicates a Classic Country outlet; a "^" designates co-owned Country stations in the metro; "I" indicates a tie; and a "*" indicates a station best in that statistic. Ranks are among subscribers.

Station/City	November 6+ Share	Rank	December 6+ Share	Rank	November Cume	December Cume
WKHX/Atlanta	4.1	9	4.3	9	740,500	739,300
WUBL/Atlanta	4.7	8	4.8	8	755,300	752,800
KASE/Austin ^	7.1	2	7.4	2	371,300	384,600
KVET/Austin ^	7.0	4	6.1	3	328,700	311,900
KOKE/Austin	1.6	18	1.8	18	87,100	99,700
WPOC/Baltimore	9.2	1	7.7	1	519,100	463,200
WKLB/Boston	5.8	4	6.0	4	791,300	807,300
WSOC/Charlotte	6.9	3	6.2	3	464,800	409,800
WKKT/Charlotte	6.0	4	5.0	9	436,600	391,100
WUSN/Chicago	4.3	5	3.9	9	1,285,700	1,243,700
WUBE/Cincinnati ^	7.4	3	7.3	2	480,200	480,700
WNNF/Cincinnati	3.5	13	3.1	15	282,100	292,300
WYGY/Cincinnati ^	2.1	18	2.3	18	193,400	199,900
WGAR/Cleveland	7.8	1	7.8	2	414,600	423,200
WCOL/Columbus, OH	10.4	1	10.2	2	467,100	435,500
WHOK/Columbus, OH	1.4	16	1.6	15	86,100	83,300
KPLX/Dallas ^	5.5	3	5.2	3	1,205,300	1,228,600
KSCS/Dallas ^	2.8	15	3.0	11	910,300	932,800
KYGO/Denver	4.5	1	5.0	6	509,600	503,100
KWOF/Denver	2.0	21	2.2	21	277,000	268,900
WYCD/Detroit	7.9	1	6.8	2	958,200	930,800
WPAW/Greensboro	8.4	4	7.9	5	311,100	280,300
WTQR/Greensboro	7.5	6	6.8	6	377,800	331,700
WWYZ/Hartford	8.1	2	8.4	2	258,500	237,600
KKBQ/Houston ^	5.9	4	5.9	4	1,286,800	1,258,500
KILT/Houston	3.3	14	3.1	15	987,700	965,500
KTHT/Houston ^ +	2.1	19	2.3	18	570,600	589,700
WFMS/Indianapolis	7.6	1	6.2	2	307,800	304,400
WLHK/Indianapolis	6.3	6	5.8	6	333,900	315,300
WQIK/Jacksonville	5.8	5	7.3	2	272,800	302,900
KFKF/Kansas City ^	8.6	1	9.1	1	378,200	417,100
KBEQ/Kansas City ^	3.6	11	4.6	7	340,900	363,000
WDAF/Kansas City	5.6	3	6.6	4	352,400	359,000
KCYE/Las Vegas	2.8	16	2.8	14	195,200	182,000
KWNR/Las Vegas	1.8	20	2.0	20	201,400	198,200
KKGO/Los Angeles	2.6	17	2.9	14	1,193,000	1,162,200
WGKX/Memphis	5.3	7	5.7	7	201,900	215,100
WEBL/Memphis	1.6	17	1.0	19	75,700	81,400
WUMY-AM/Memphis	1.5	18	1.2	18	51,300	54,900
WKIS/Miami	2.9	15	3.1	14	453,300	430,200
WNSH/New York (Middlesex)	3.1	15	2.6	17	179,900	158,700

Station/City	November 6+ Share	Rank	December 6+ Share	Rank	November Cume	December Cume
WMIL/Milwaukee	10.6	1	9.4	1	481,400	406,600
KEEY/Minneapolis	6.6	4	7.0	3	796,500	757,000
KMNB/Minneapolis	6.1	5	5.9	6	740,600	690,100
WKDF/Nashville ^	3.8	11	4.6	8	274,100	296,400
WSIX/Nashville	6.2	4	5.8	4	286,100	273,400
WSM-FM/Nashville ^	4.7	8	4.3	9	271,600	280,600
WNSH/New York (Nassau)	1.5	24	1.4	24	143,200	143,500
WNSH/New York	1.7	21	1.5	22	1,033,900	988,100
WGH/Norfolk	5.8	2	5.0	5	233,800	231,700
WUSH/Norfolk	5.1	4	4.4	6	233,200	231,200
WWKA/Orlando	5.7	5	6.5	3	338,900	355,700
KNIX/Phoenix	4.5	6	4.2	5	732,500	680,300
KMLE/Phoenix	4.3	7	3.8	9	707,200	660,500
WXTU/Philadelphia	4.8	8	5.1	7	782,600	785,600
WDSY/Pittsburgh	7.9	2	7.8	3	498,200	504,400
KWJJ/Portland	4.0	11	3.6	15	381,100	371,700
KUPL/Portland	6.7	3	6.5	3	363,700	376,700
WCTK/Providence	6.8	4	6.6	5	344,100	345,400
WQDR/Raleigh	10.0	1	10.1	1	357,500	333,700
WKSL/Raleigh (flipped to Country 11/1/13)	2.9	13	2.3	16	279,800	196,600
KFRG/Riverside	4.8	3	3.8	4	314,000	295,300
KNCL/Sacramento	4.8	5	4.5	8	360,400	326,600
KNTY/Sacramento	3.0	14	3.0	16	263,000	254,300
KUBL/Salt Lake City	5.2	7	4.2	10	342,300	336,200
KSOP/Salt Lake City	3.3	12	3.0	13	269,300	261,400
KEGA/Salt Lake City	1.9	19	1.8	19	223,500	211,200
KAJA/San Antonio	8.2	1	7.6	1	602,300	579,300
KCYX/San Antonio ^	7.0	4	6.5	5	618,500	602,700
KKYX-AM/San Antonio ^ +	1.4	20	1.2	21	98,100	87,200
KRPT/San Antonio (Devine, TX)	1.1	23	1.1	22	110,400	79,600
KSON/San Diego	6.5	1	6.9	1	527,800	496,900
KRTY/San Jose	5.8	3	5.3	4	217,300	198,100
KKWF/Seattle	4.1	10	4.0	10	543,800	578,700
KMPS/Seattle	3.2	15	2.5	21	507,200	520,300
KSD/St. Louis	4.8	9	4.5	12	556,000	549,600
WIL/St. Louis	6.1	2	6.3	4	570,000	567,800
WFUS/Tampa	5.2	7	6.4	3	540,900	566,700
WQYK/Tampa	5.4	6	4.5	9	491,000	465,300
WMZQ/Washington	3.8	10	3.7	9	588,500	586,600
WIRK/West Palm Beach	2.8	10	3.2	8	151,300	161,300